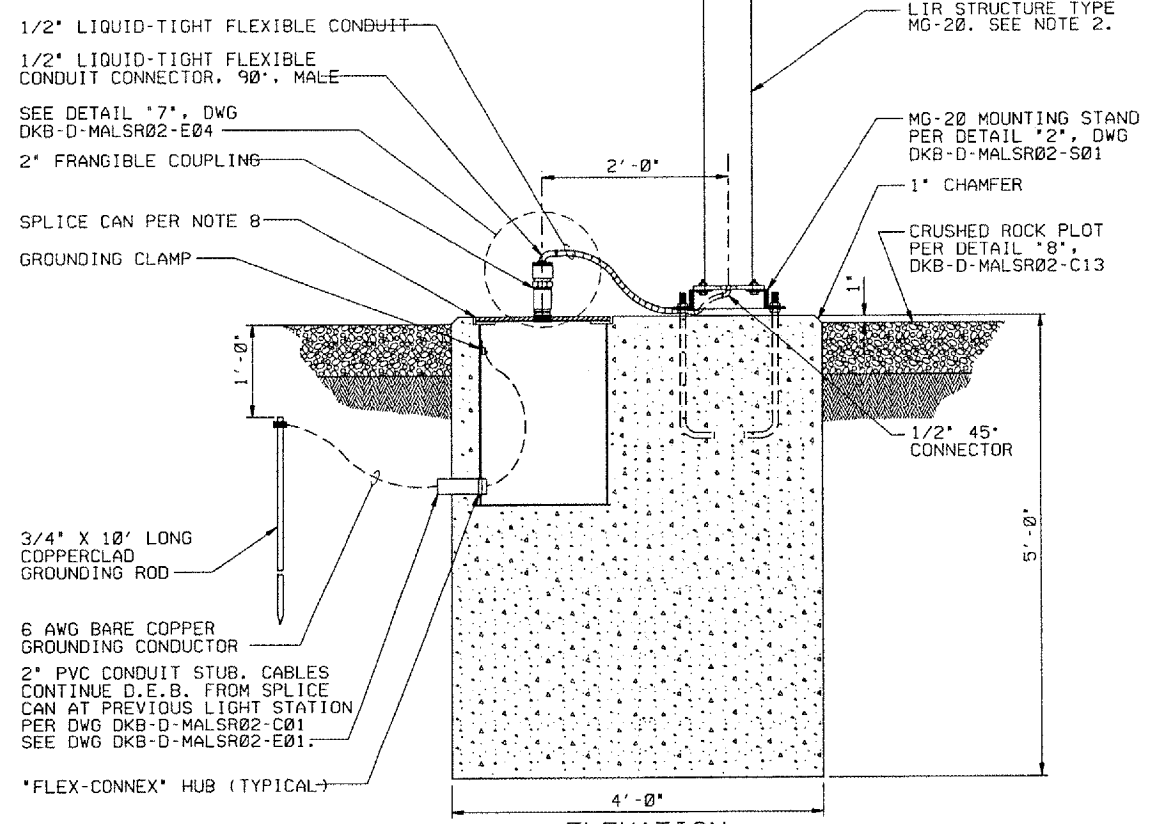
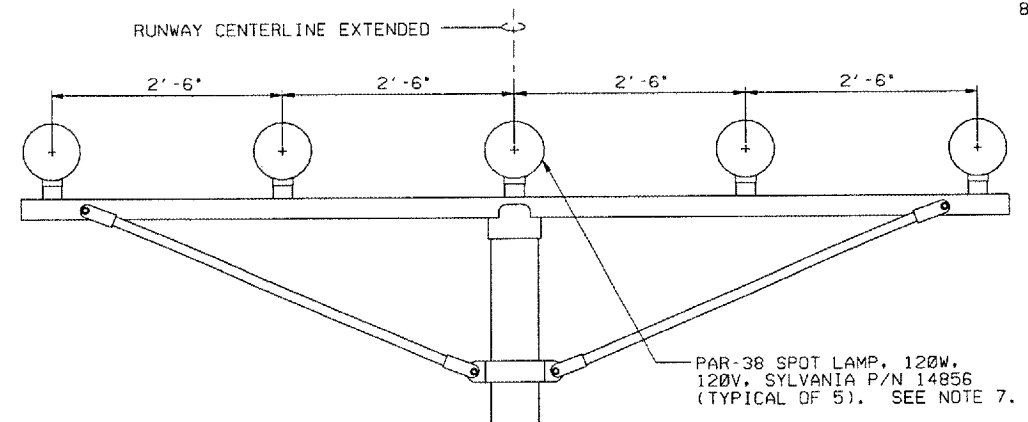


- NOTES:**
1. SEE PLAN AND PROFILE DWG FOR LAMP CENTERLINE AND FOUNDATION TOP ELEVATIONS.
 2. LIR TOWER SHALL PIVOT TOWARD THE RUNWAY THRESHOLD. SEE NOTE 1, DWG DKB-D-MALSR02-S01 FOR LIR TUBE CUTTING LENGTH CALCULATION AND STRUCTURE ASSEMBLY DETAILS.
 3. SEE PROJECT SPECIAL PROVISIONS FOR EXCAVATION AND BACKFILL REQUIREMENTS. EXCAVATION SHALL BE SHORED OR SHAPED PER OSHA REQUIREMENTS.
 4. SEE PROJECT SPECIAL PROVISIONS FOR CONCRETE FORM WORK, REINFORCEMENT, MATERIAL, PLACEMENT, AND CURING SPECIFICATIONS.
 5. ALL CONNECTIONS TO GROUNDING RODS SHALL BE MADE USING EXOTHERMIC WELDS PER SPECIFICATIONS.
 6. FOUNDATION SHALL BE CONSTRUCTED SUCH THAT LIR MAST IS CENTERED AT THE RUNWAY STATION SHOWN ON DWG DKB-D-MALSR02-C01.
 7. SEE DETAILS '3', DWG DKB-D-MALSR02-E03 AND '6', DWG DKB-D-MALSR02-E04 FOR LIR LIGHT BAR WIRING AND LAMPHOLDER INSTALLATION DETAILS.
 8. THE SSPLICE CAN SHALL BE SPECIFICATION FAA-E-1315A, L867D LIGHT BASE, CLASS I, 16 1/4" I. D., 24" DEEP, JAQUITH CAT. NO. AC63242Q100301 WITH 3/8" COVER PLATE, JAQUITH CAT. NO. AK2002-06 OR CAT. NO. AP2832 AND GASKET, JAQUITH CAT. NO. 10530281. THE PLYWOOD SHIPPING COVER SHALL BE USED AS CONCRETE FORM TO PROVIDE 5/16" WIDE AIR GAP IN CONCRETE AROUND BASE PLATE. TOP OF COVER SHALL BE FLUSH WITH TOP OF CONCRETE FOUNDATION CONFIRM ALL PART NUMBERS WITH MANUFACTURER.

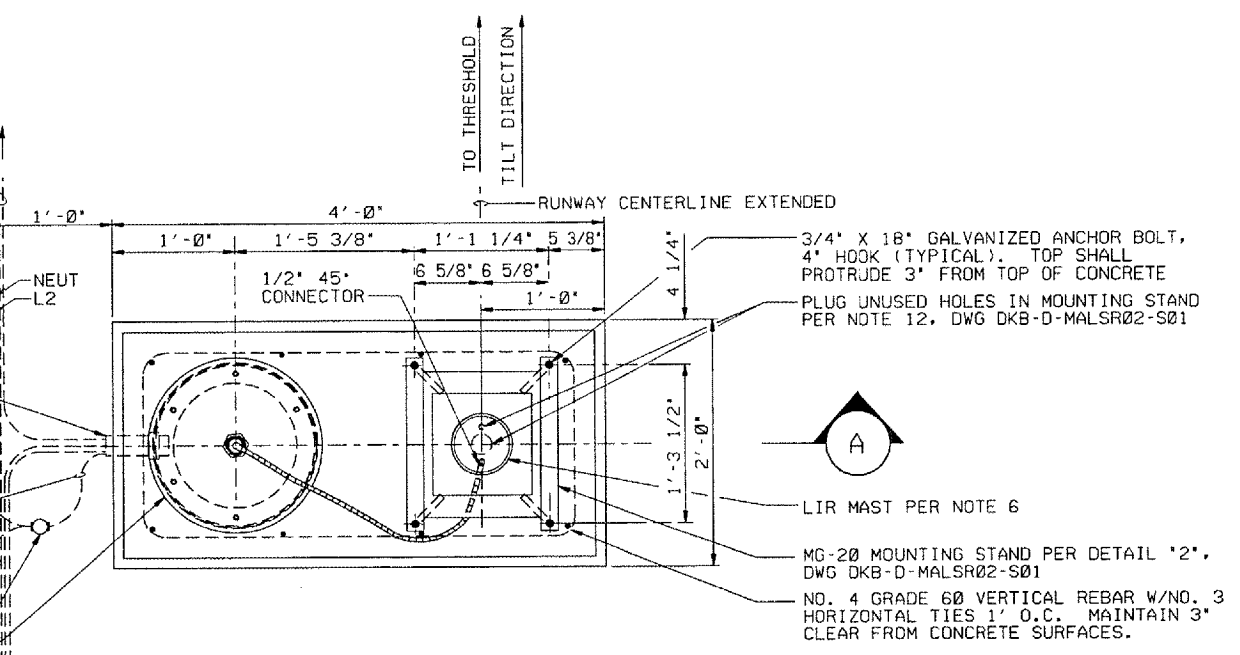


CABLES CONTINUE D.E.B. TO SPLICE CAN AT NEXT LIGHT STATION PER DWG DKB-D-MALSR02-C01 (EXCEPT AT STATION 2+10)

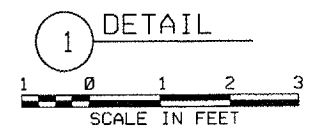
THREE 3/0 POWER CABLES D.E.B. FROM MALS POWER DISTRIBUTION PANEL TO CENTER LIGHT STA. 2+10 LIGHT BAR.
DWG DKB-D-MALSR02-C04 AND DKB-D-MALSR02-E01.
2" PVC CONDUIT STUB. DO NOT SEAL OPEN END.

6 AWG BARE COPPER GROUNDING CONDUCTOR
1/0 AWG BARE COPPER GUARD WIRE IN TRENCH
3/4" X 10' LONG COPPERCLAD GROUNDING ROD
SPLICE CAN PER NOTE 8

POWER CABLES D.E.B. FROM MALS POWER DISTRIBUTION PANEL PER DWG DKB-D-MALSR02-C01 NUMBER AND TYPE OF CABLES IN TRENCH VARIES PER DWG DKB-D-MALSR02-E01.



PLAN
REINFORCED CONCRETE FOUNDATION



DEPARTMENT OF TRANSPORTATION
FEDERAL AVIATION ADMINISTRATION
GREAT LAKES REGION CHICAGO, ILLINOIS

MALSR
FOUNDATION DETAILS FOR STEADY-BURNING
LIGHT BAR AT STATION 4+20
RUNWAY 02

DEKALB		DEKALB TAYLOR MUNICIPAL AIRPORT		1L
REVIEWED BY	SUBMITTED BY	APPROVED BY		
PROJ. ENGR.	TAD	ISSUED BY	PLATFORM MGR.	
DATE	TAD	CHICAGO NAS	DATE	
DATE	TAD	IMPLEMENTATION	DATE	
DATE	EGS	CENTER	DRAWING NO.	
			DKB-D-MALSR02-C06	

DATE	DESCRIPTION	CHK	REV. DATE	APVD

PLOT DATE: 03/28/2007, 10:51 AM
 FILE NAME: I:\AIRPORTS\DEKALB\03-08\DEKALB\REPORTS\SHEETS\MALSR\WG-20 STDY BRNG ON CONC FOR MALSR D.E.B. NO WINDCH.DGN
 PLOT SCALE: 2/0 13/16 1/1 7/16
 USER NAME: JJA