

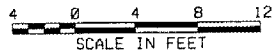
MALS POWER CONDUCTORS AND 1/0 AWG BARE COPPER GROUNDING CONDUCTOR D.E.B. FROM MALS SHELTER
POWER CONDUCTORS TO THRESHOLD BAR IN COMMON TRENCH WITH LIGHT STATION POWER CONDUCTORS

MALS POWER CONDUCTORS AND 1/0 AWG BARE COPPER GUARD WIRE D.E.B. TO LIGHT STATIONS

MALS POWER CONDUCTORS AND 1/0 AWG BARE COPPER GROUNDING CONDUCTOR D.E.B. FROM MALS SHELTER
POWER CONDUCTORS TO THRESHOLD BAR IN COMMON TRENCH WITH LIGHT STATION POWER CONDUCTORS

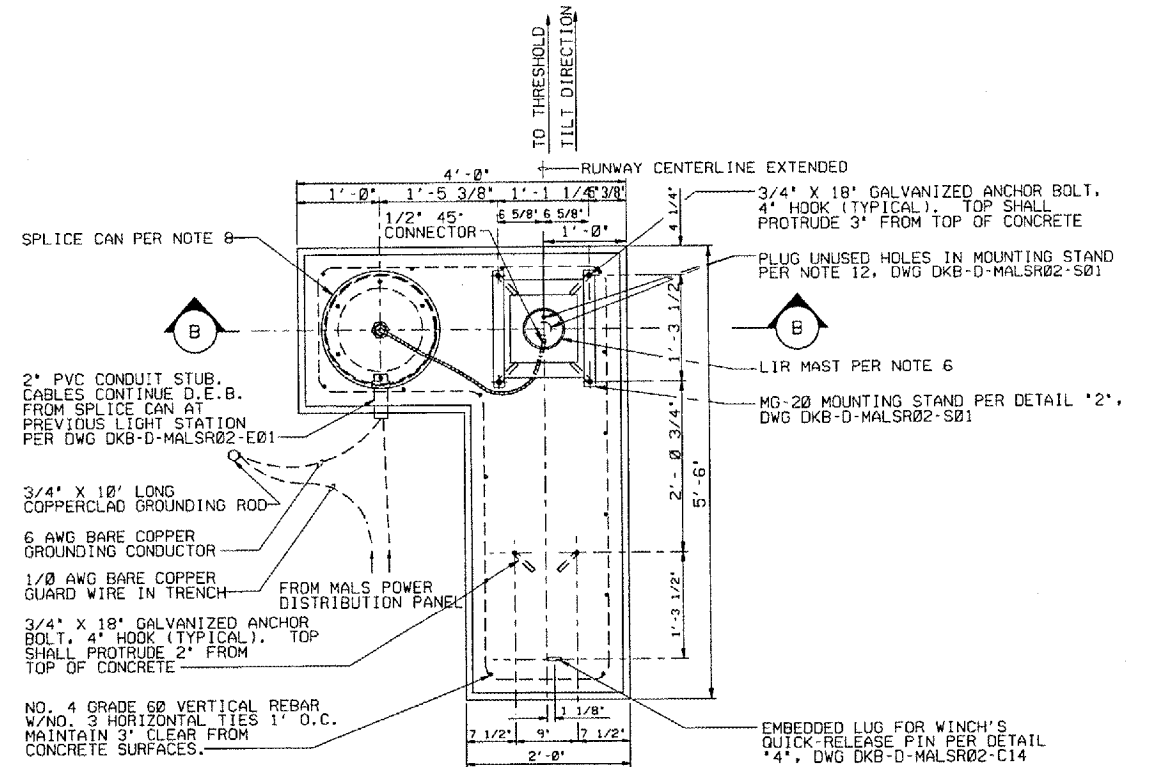
MALS POWER CONDUCTORS AND 1/0 AWG BARE COPPER GUARD WIRE D.E.B. TO LIGHT STATIONS

ELEVATION
(LOOKING TOWARD THRESHOLD)
STEADY-BURNING LIGHT BAR MOUNTED ON MG-30 OR MG-40 LIR TOWER

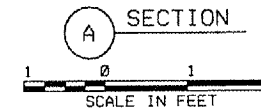


NOTES:

1. SEE PLAN AND PROFILE DRAWING FOR LAMP CENTERLINE AND FOUNDATION TOP ELEVATIONS.
2. LIR TOWERS SHALL PIVOT TOWARD THE RUNWAY THRESHOLD. SEE NOTE 1, DWG DKB-D-MALSR02-S01 FOR LIR TUBE CUTTING LENGTH CALCULATION AND STRUCTURE ASSEMBLY DETAILS.
3. SEE PROJECT SPECIAL PROVISIONS FOR EXCAVATION AND BACKFILL REQUIREMENTS. EXCAVATION SHALL BE SHORED OR SHAPED PER OSHA REQUIREMENTS.
4. SEE PROJECT SPECIAL PROVISIONS FOR CONCRETE FORM WORK. REINFORCEMENT, PLACEMENT, AND CURING SPECIFICATIONS.
5. ALL CONNECTIONS TO GROUNDING RODS SHALL BE MADE USING EXOTHERMIC WELDS PER SPECIFICATIONS.
6. FOUNDATION SHALL BE CONSTRUCTED SUCH THAT LIR MAST IS CENTERED AT THE RUNWAY STATION SHOWN ON PLAN AND PROFILE DWG.
7. SEE DETAILS '3', DWG DKB-D-MALSR02-E03 AND '6', DWG DKB-D-MALSR02-E04 FOR LIR LIGHT BAR WIRING AND LAMPHOLDER INSTALLATION DETAILS.
8. THE SPLICE CAN SHALL BE A SPECIFICATION FAA-E-1315A, L867D LIGHT BASE, CLASS 1, 16 1/4" I. D., 24" DEEP, JAQUITH CAT. NO. AC632420100301 WITH 3/8" COVER PLATE, JAQUITH CAT. NO. AK2002-06 OR CAT NO. AP2832 AND GASKET, JAQUITH CAT. NO. 10530281. THE PLYWOOD SHIPPING COVER SHALL BE USED AS CONCRETE FORM TO PROVIDE 5/16" WIDE AIR GAP IN CONCRETE AROUND BASE PLATE. TOP OF COVER SHALL BE FLUSH WITH TOP OF CONCRETE FOUNDATION CONFIRM ALL PART NUMBERS WITH MANUFACTURER.



REINFORCED CONCRETE FOUNDATION



1/2" LIQUID-TIGHT FLEXIBLE CONDUIT
1/2" LIQUID-TIGHT FLEXIBLE CONDUIT CONNECTOR, 90°, MALE
SEE DETAIL '7', DWG DKB-D-MALSR02-E04
2" FRANGIBLE COUPLING
SPLICE CAN PER NOTE 8
GROUNDING CLAMP

6" DIAM LIR MAST. SEE NOTE 6.
MG-20 MOUNTING STAND PER DETAIL '2', DWG DKB-D-MALSR02-S01
1" CHAMFER
CRUSHED ROCK PLOT PER DETAIL '8', DKB-D-MALSR02-C13
1/2" 45° CONNECTOR

3/4" X 10' LONG COPPERCLAD GROUNDING ROD
6 AWG BARE COPPER GROUNDING CONDUCTOR
FLEX-CONNEX HUB (TYPICAL)
2" PVC CONDUIT STUB, CABLES CONTINUE D.E.B. FROM MALS POWER DISTRIBUTION UNIT. SEE DWG DKB-D-MALSR02-E01.

ELEVATION
SECTION B



PLOT DATE: 03/25/2007 11:41 AM
FILE NAME: I:\AIRPORTS\DEKALB\B03-BEELECAIRPORT\SHEETS\MICRO-STATION SHEETS\MALS\MG-20 STD-BRNG STA 10 ON CONCRETE FOR MALS D.E.B.DGN
PLOT SCALE: 1/2" = 1'-0" / 1" = 2'-0"
USER NAME: JLA

DEPARTMENT OF TRANSPORTATION FEDERAL AVIATION ADMINISTRATION GREAT LAKES REGION CHICAGO, ILLINOIS					
MALS FOUNDATION DETAILS FOR STEADY-BURNING LIGHT BARS AT STATION 10+50 RUNWAY 02					
DEKALB		DEKALB TAYLOR MUNICIPAL AIRPORT		IL	
REVIEWED BY	SUBMITTED BY	APPROVED BY			
PROJ. ENGR.	ISSUED BY	PLATFORM MGR.			
DATE	DATE	DATE		DATE	
DRAWN	CHICAGO NAS	DRAWING NO.		REV	
DRAWN	IMPLEMENTATION	DKB-D-MALSR02-C08			