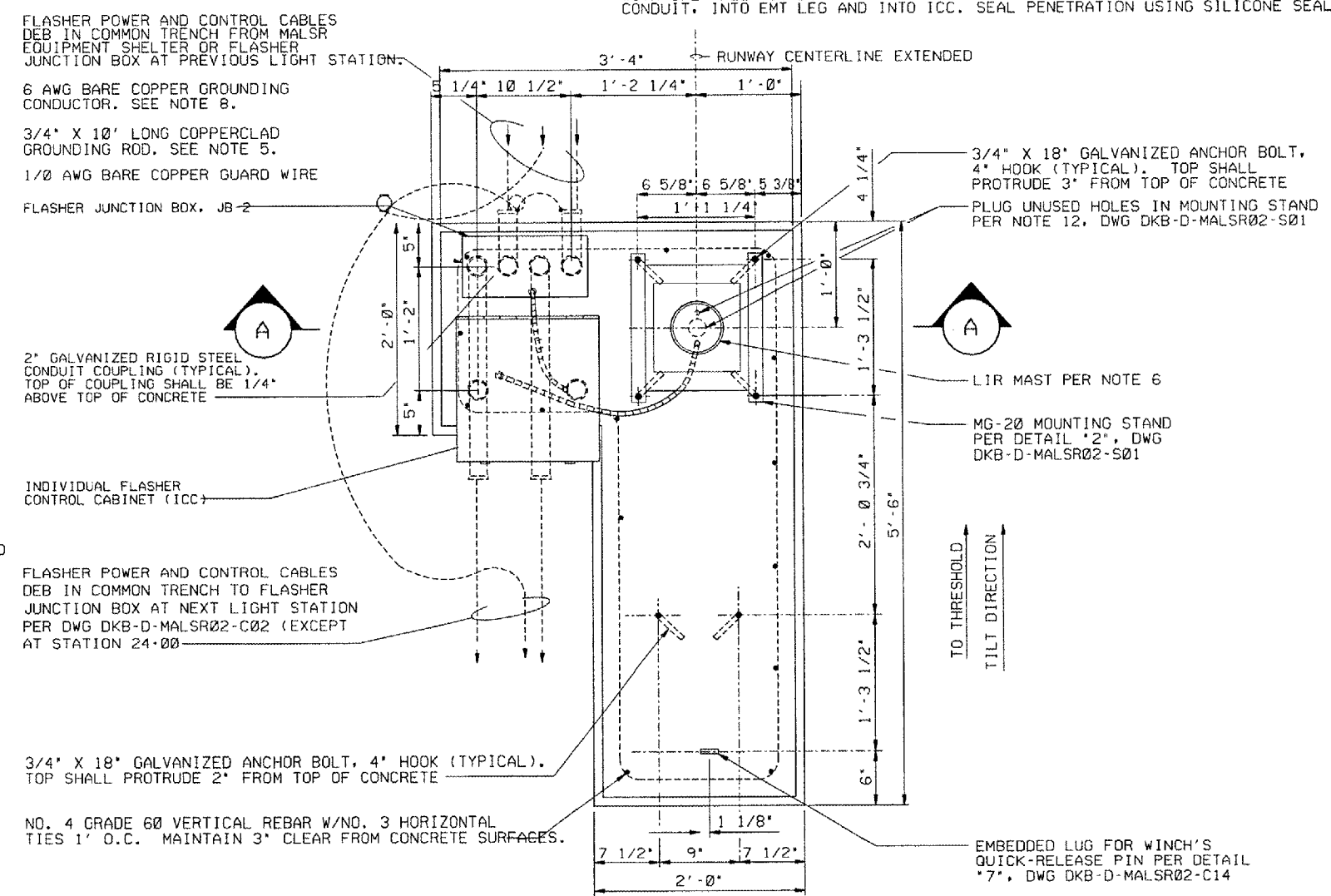
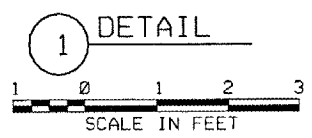


NOTE:
 FOUNDATION SHOWN IS FOR DME RAIL TOWER AND ASSOCIATED EQUIPMENT, RAIL EQUIPMENT BEING FURNISHED BY THE OWNER IS MANUFACTURED BY MULTI ELECTRIC. A LARGER CONCRETE FOUNDATION WILL BE REQUIRED TO MOUNT THE JUNCTION BOX AND POWER SUPPLY CABINET. SEE SHEET 46 FOR REFERENCE MULTI ELECTRIC RAIL JUNCTION BOX AND POWER SUPPLY CABINET MOUNTING DETAILS. CONFIRM EXACT CONCRETE FOUNDATION DIMENSIONS WITH MULTI ELECTRIC. DEPTH OF CONCRETE FOUNDATION WILL BE 5'-0".

- NOTES:**
1. SEE DWG DKB-D-MALSR02-C01 FOR LAMP CENTERLINE AND FOUNDATION TOP ELEVATIONS.
 2. LIR STRUCTURES SHALL PIVOT TOWARD THE RUNWAY THRESHOLD. SEE NOTE 1. DWG DKB-D-MALSR02-S01 FOR LIR TUBE CUTTING LENGTH CALCULATION AND MG-20 LIR STRUCTURE ASSEMBLY DETAILS
 3. SEE PROJECT SPECIAL PROVISIONS FOR EXCAVATION AND BACKFILL REQUIREMENTS. EXCAVATION SHALL BE SHORED AND SHAPED PER OSHA REQUIREMENTS.
 4. SEE PROJECT SPECIAL PROVISIONS FOR CONCRETE FROM WORK, REINFORCED, MATERIAL, PLACEMENT, AND CURING SPECIFICATIONS.
 5. ALL CONNECTIONS TO GROUNDING RODS SHALL BE MADE USING EXOTHERMIC WELDS PER SPECIFICATIONS.
 6. FOUNDATION SHALL BE CONSTRUCTED SUCH THAT LIR MAST IS CENTERED AT THE RUNWAY STATION SHOWN ON DWG DKB-D-MALSR02-C02.
 7. SEE DWG DKB-D-MALSR02-E02 FOR FLASHER ICC WIRING.
 8. DRILL HOLE IN SIDE OF 2" EMT CONDUIT LEG OF ICC AND INSTALL 90° 1/2" FLEX CONDUIT CONNECTOR WITH 1/2" FLEX CONDUIT FROM JUNCTION BOX. ROUTE POWER AND CONTROL CABLES THROUGH FLEX CONDUIT INTO EMT LEG AND INTO ICC. SEAL PENETRATION USING SILICONE SEALER.



PLAN
REINFORCED CONCRETE FOUNDATION



ELEVATION SECTION
 SCALE IN FEET

PLOT DATE: 04/19/2007, 11:55 AM
 FILE NAME: I:\AIRPORTS\DEKALB\303-08ELEC\AIRPORT\SHEETS\MICRO-STATION SHEETS\MALSR\MG-20 FLSHR ON CONC FOR MALSR D.E.B.DGN
 PLOT SCALE: 2:10
 USER NAME: BAK

DEPARTMENT OF TRANSPORTATION FEDERAL AVIATION ADMINISTRATION GREAT LAKES REGION CHICAGO, ILLINOIS			
MALSR FOUNDATION DETAILS FOR FLASHER AT STATIONS 16+40 THRU 20+20 RUNWAY 02			
DEKALB REVIEWED BY		DEKALB TAYLOR MUNICIPAL AIRPORT SUBMITTED BY	
APPROVED BY		APPROVED BY	
PROJ. ENGR. DATE DRAWN	TAD TAD EGS	ISSUED BY CHICAGO NAS IMPLEMENTATION CENTER	PLATFORM MGR. DATE JCM DRAWING NO. DKB-D-MALSR02-C11