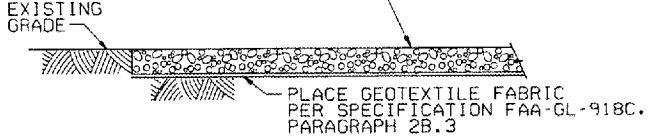


TYPICAL CRUSHED ROCK WORK AREA FOR STEADY-BURNING LIGHT BARS MOUNTED ON EMT SUPPORTS

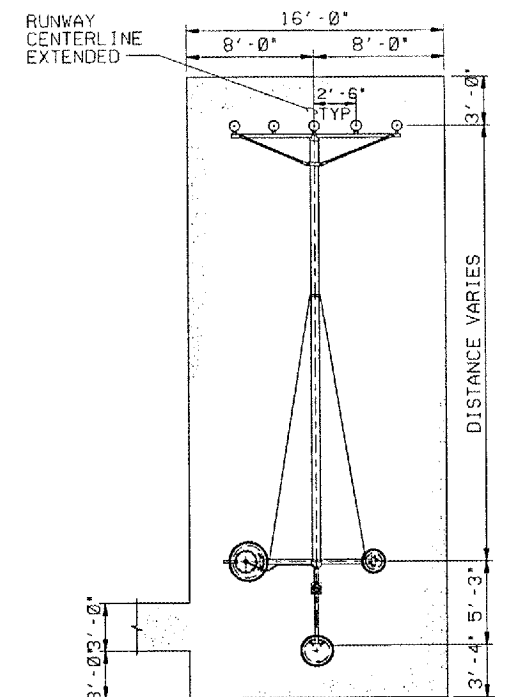
1 DETAIL

REMOVE TOPSOIL, COMPACT THE SUBGRADE, PLACE GEOTEXTILE FABRIC, AND PLACE COMPACTED CRUSHED ROCK TO 6" DEPTH. CRUSHED ROCK WORK AREA SHALL BE GRADED SO THAT WATER WILL DRAIN AWAY WITH NO DEPRESSIONS IN CRUSHED ROCK SURFACE.



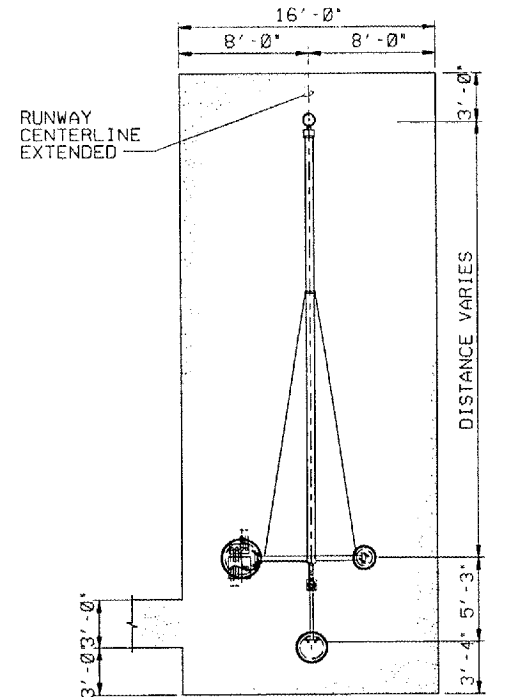
TYPICAL SECTION FOR CRUSHED ROCK PLOT, WORK AREAS, ACCESS ROADS AND WALKWAYS

8 DETAIL NOT TO SCALE



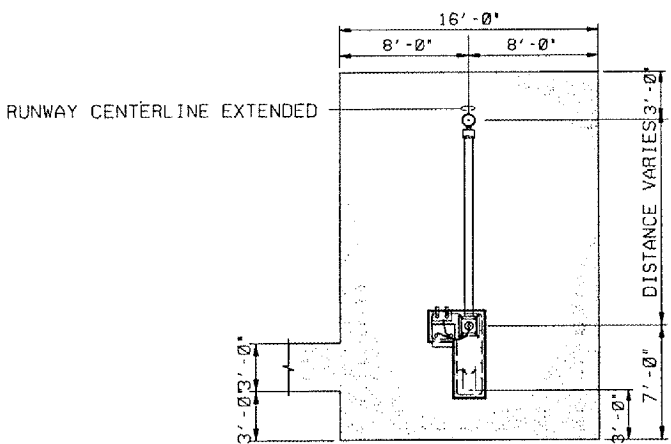
TYPICAL CRUSHED ROCK WORK AREA FOR STEADY-BURNING LIGHT BAR ON TYPE MG-30 OR TYPE MG-40 LIR STRUCTURE

6 DETAIL



TYPICAL CRUSHED ROCK WORK AREA FOR TYPE MG-30 OR TYPE MG-40 LIR STRUCTURE WITH FLASHER

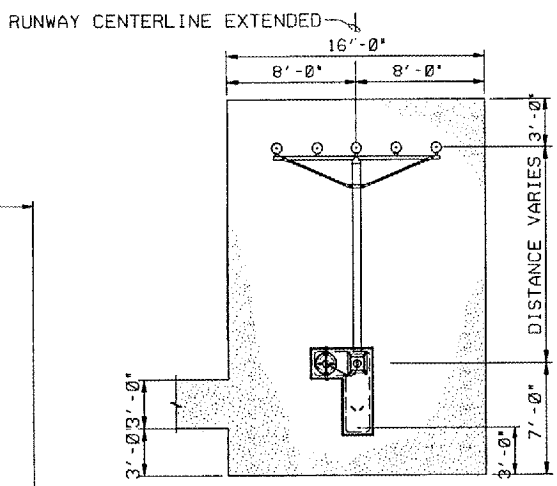
7 DETAIL



TYPICAL CRUSHED ROCK WORK AREA FOR TYPE MG-20 LIR STRUCTURE WITH FLASHER

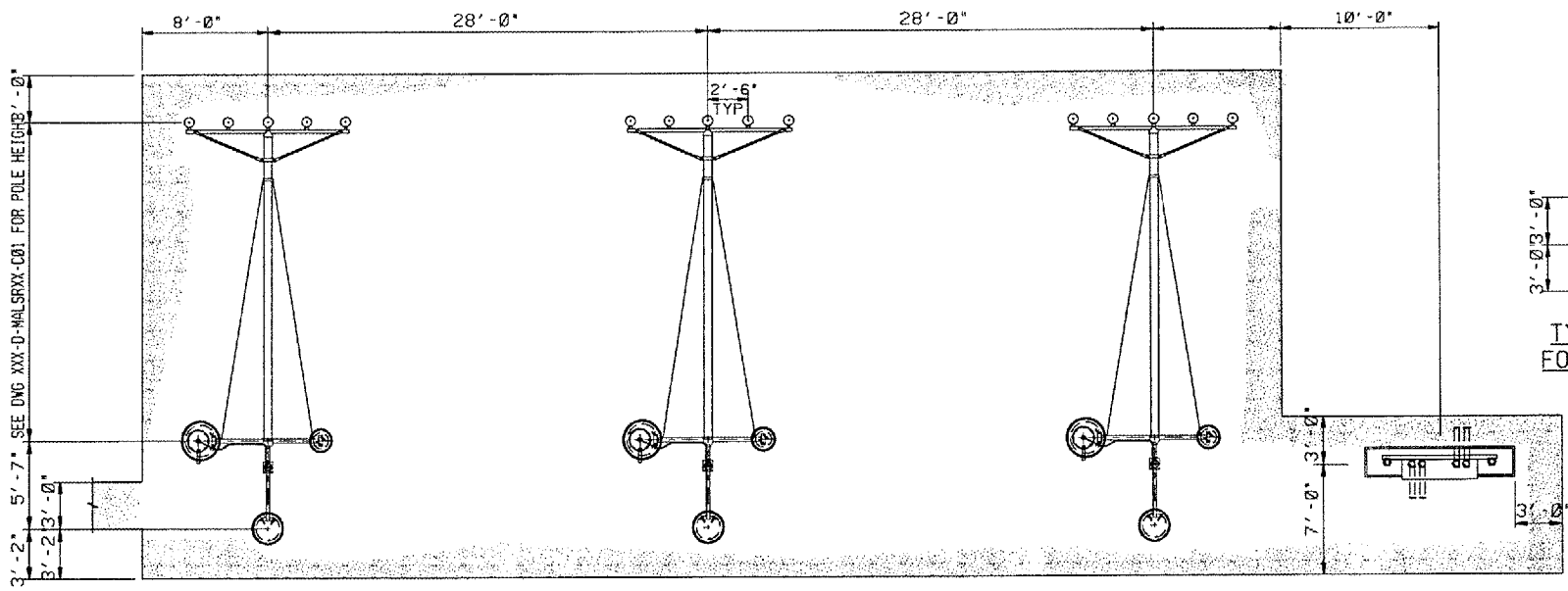
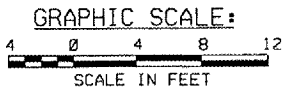
5 DETAIL

MASTER FILE: CRUSHED ROCK PLOT DETAILS FOR MALSr BARS ON CONCRETE.DGN



TYPICAL CRUSHED ROCK WORK AREA FOR STEADY-BURNING LIGHT BAR ON TYPE MG-20 LIR STRUCTURE

4 DETAIL



CRUSHED ROCK WORK AREA FOR STEADY-BURNING LIGHT BARS ON TYPE MG-30 OR MG-40 LIR STRUCTURES AT STA 10+50

3 DETAIL

PLOT DATE: 8/27/2007, 10:00 AM
 FILE NAME: I:\AIRPORTS\DEKALB\B03-06ELEC\AIRPORTS\SHEETS\MICRO-STATION SHEETS\MALSr\CRUSHED ROCK PLOT DETAILS FOR MALSr BARS ON CONCRETE.DGN
 PLOT SCALE: 1/16" = 1'-0" / 1/8" = 1'-0" / 1/4" = 1'-0" / 1/2" = 1'-0" / 3/4" = 1'-0" / 1" = 1'-0"
 USER: NAME: JJA

DEPARTMENT OF TRANSPORTATION FEDERAL AVIATION ADMINISTRATION GREAT LAKES REGION CHICAGO, ILLINOIS			
MALSr CRUSHED ROCK PLOT DETAILS			
DEKALB		DEKALB TAYLOR MUNICIPAL AIRPORT	
REVIEWED BY	SUBMITTED BY	APPROVED BY	
PROJ. ENGR.	TAD	PLATFORM MGR.	
DATE	DATE	DATE	
ISSUED BY	IMPLEMENTATION CENTER	DRAWING NO.	
CHICAGO NAS	IMPLEMENTATION CENTER	DKB-D-MALSr02-C13	
DATE	DESCRIPTION	JCN	REV