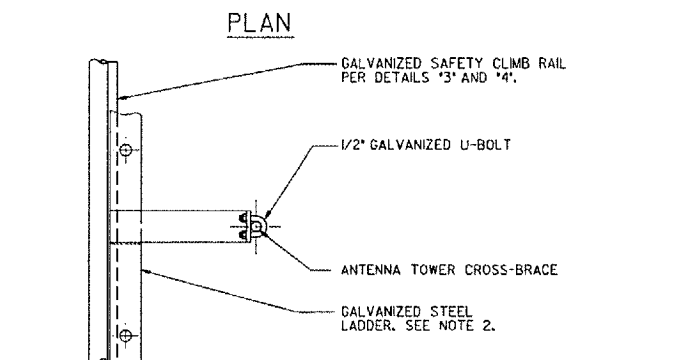
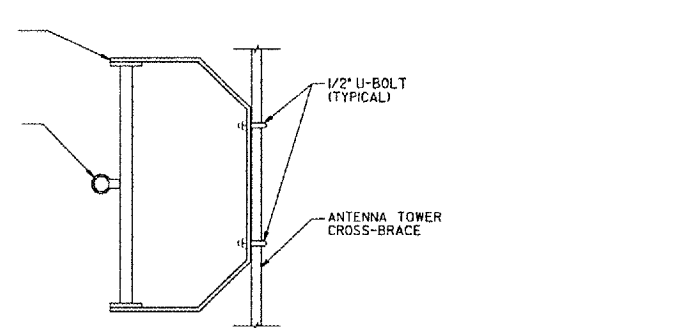
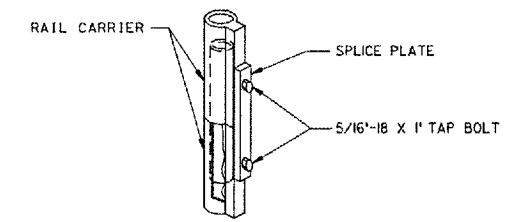


- NOTES:**
1. ANTENNA TOWER LEG TO WHICH GROUNDING ASSEMBLY IS BONDED, SHALL BE TACK-WELDED AT THE BOLTED CONNECTIONS TO PROVIDE ELECTRICAL CONTINUITY BETWEEN THE TOWER SECTIONS.
 2. THE LADDER SHALL BE INSTALLED ON RIGHT SIDE OF ANTENNA TOWER WHEN LOOKING TOWARD RUNWAY THRESHOLD. CENTERLINE OF LADDER SHALL BE COINCIDENT WITH THE CENTERLINE OF THE ANTENNA TOWER FACE TO WHICH IT IS BEING ATTACHED. IN THE EVENT THE GLIDE SLOPE ANTENNA, LADDER AND SAFETY CLIMBING DEVICE IS PURCHASED FROM ANTENNA PRODUCTS (OF MINERAL WELLS, TX.) THE CONTRACTOR SHALL NOTIFY ANTENNA PRODUCTS OF THE LOCATION OF THE NEW INSTALLATION SO THAT SCE-2 SAFETY SLEEVES CAN BE REPLACED ONCE REPLACEMENT PARTS ARE AVAILABLE.
 3. THE CONTRACTOR SHALL INSTALL ANTENNA BRACKET ASSEMBLIES (3 REQUIRED) AT HEIGHTS SHOWN PER DETAIL '1'. HORIZONTAL ITEMS SHALL BE LEVEL AND VERTICAL ITEMS SHALL BE PLUMB.
 4. TOWER SHALL BE ASSEMBLED WITH ALTERNATING ORANGE AND WHITE COLORED SECTIONS.
 5. CONTRACTOR SHALL ERECT TOWER TO FULL 55' HEIGHT. ANTENNA ELEMENT LOCATIONS WILL BE ADJUSTED BY FAA INSTALLATION PERSONNEL TO ACHIEVE BEST SIGNAL GENERATION. CONTRACTOR SHOULD INCLUDE IN THE BID A SEPARATE TENTATIVE COST ESTIMATE TO RETURN TO THE SITE AND SHORTEN THE TOWER TO 5'-0" MAXIMUM HEIGHT ABOVE CENTERLINE OF TOP ANTENNA ELEMENT. THIS WILL REQUIRE THE CONTRACTOR TO CUT ANTENNA TOWER STRUCTURE, LADDER, AND SAFETY CLIMB RAIL AND RELOCATE AIR TERMINAL, DOWN CONDUCTOR, AND OBSTRUCTION LIGHT TO TOP OF SHORTENED TOWER. TOWER LEGS SHALL BE CAPPED WITH PIPE CAPS WELDED OR THREADED IN PLACE. NON-CONTINUOUS CROSS-BRACING SHALL BE CUT AT ITS ORIGIN.
 6. FIELD-DRILL 3/8" DIAM. HOLE IN ANTENNA MOUNTING FRAME, SCRAPE PAINT FROM BONDING AREA AND INSTALL GROUNDING LUG AND 6 AWG BARE COPPER GROUNDING WIRE. CONNECT 6 AWG BARE TO ANTENNA TOWER STRUCTURE USING GROUNDING CLAMP.
 7. SEE THE OWNER-FURNISHED PROPERTY LIST FOR ITEMS PROVIDED BY THE DEKALB AIRPORT. CONFIRM TOWER COLORS AND ARRANGEMENT CONFORM TO FAA AC 70/7460-1K OBSTRUCTION MARKING AND LIGHTING.



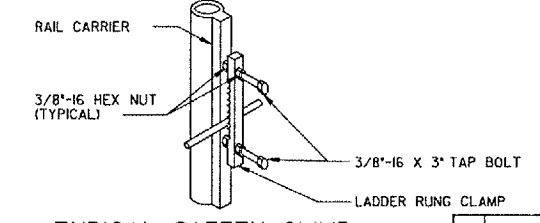
ANTENNA ELEMENT MOUNTING BRACKET AND ANTENNA TOWER CONNECTIONS

2 DETAIL SCALE: NONE



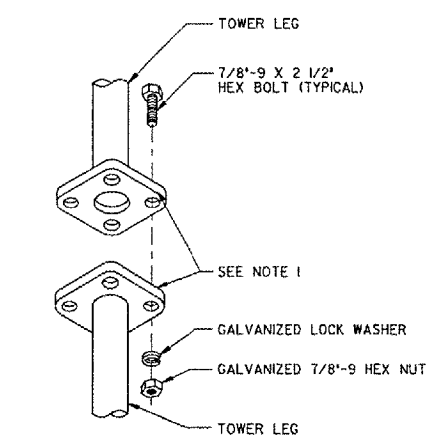
TYPICAL SAFETY CLIMB RAIL SPLICE JOINT

3 DETAIL SCALE: NONE



TYPICAL SAFETY CLIMB RAIL LADDER RUNG

4 DETAIL SCALE: NONE



5 DETAIL SCALE: NONE

6 DETAIL SCALE: NONE

DEPARTMENT OF TRANSPORTATION FEDERAL AVIATION ADMINISTRATION GREAT LAKES REGION				CHICAGO, ILLINOIS	
GLIDE SLOPE ANTENNA TOWER ASSEMBLY DETAILS RUNWAY 02					
DEKALB		DEKALB TAYLOR MUNICIPAL AIRPORT		IL	
REVIEWED BY	SUBMITTED BY	APPROVED BY			
DATE	TAD	ISSUED BY	DATE	PLATFORM MGR.	JCM
DRAWN	TAD	IMPLEMENTATION	DATE		
DRAWN	EGS	CENTER			
			DEKALB NO.	DKB D-GS02-S01	

PLOT DATE = 04/18/2007 02:56 PM
 FILE NAME = I:\projects\040613\040613-06ELEC\airport\AShema\Micro-Station\Sheets\05 TMR ASSY DTLS.dgn
 USER NAME = JCM
 USER NAME = JCM

55' GLIDE SLOPE ANTENNA TOWER
1 DETAIL SCALE: NONE