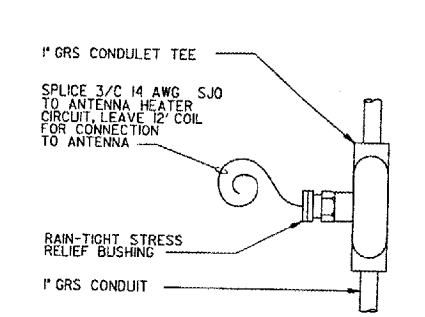


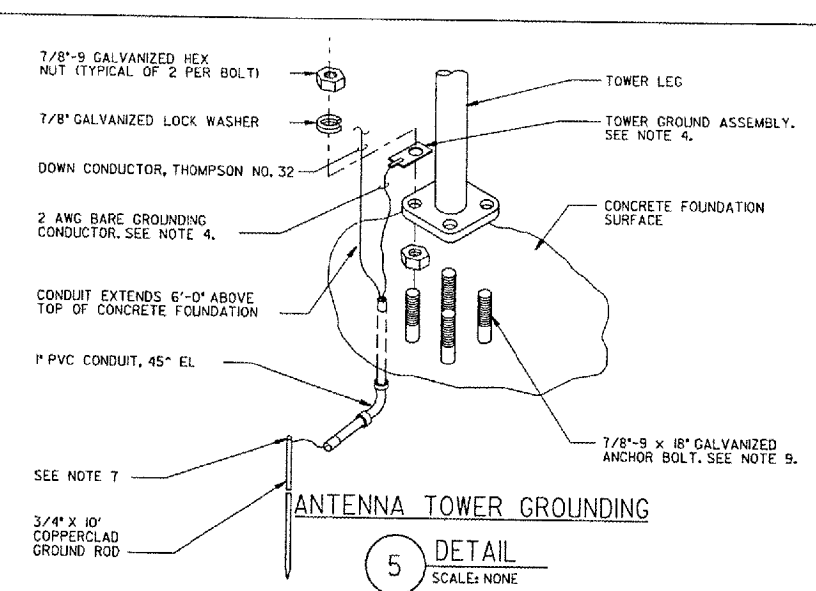
1 DETAIL SCALE: NONE

2 DETAIL SCALE: NONE

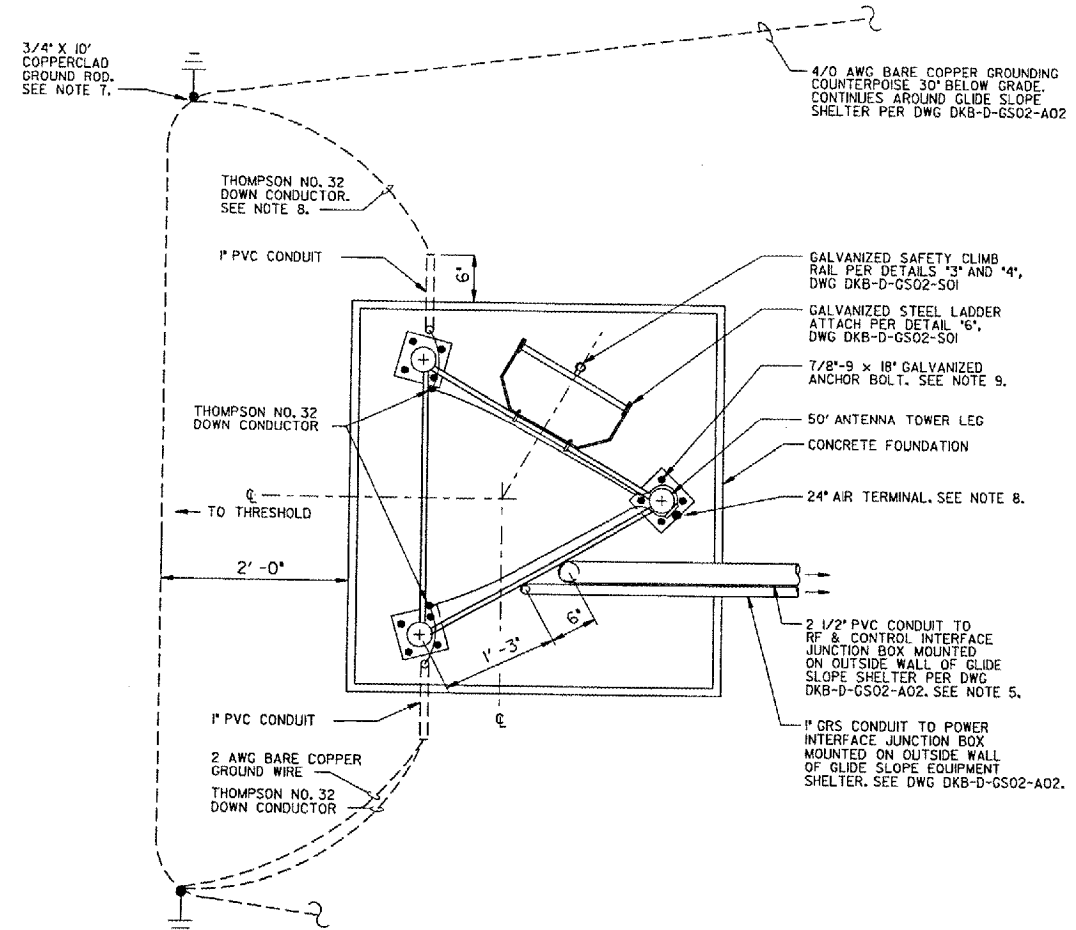


3 DETAIL SCALE: NONE

4 DETAIL SCALE: NONE



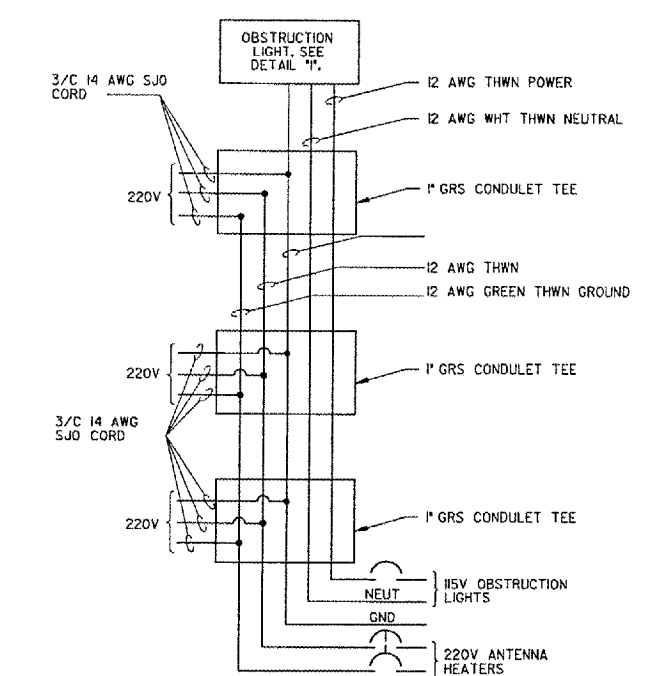
5 DETAIL SCALE: NONE



6 DETAIL SCALE IN FEET

NOTES:

1. THE OBSTRUCTION LIGHT SHALL BE OPERATIONAL BEFORE DUSK OF THE FIRST DAY THAT THE ANTENNA TOWER IS ERECTED.
2. CONDUITS SHALL BE CLAMPED TO ANTENNA TOWER STRUCTURAL MEMBERS ON TOWER FACE OPPOSITE FACE WITH LADDER AT 5'-0" O.C. MAX.
3. 1" RIGID GALVANIZED STEEL CONDUIT AND 2 1/2" PVC CONDUIT SHALL BE INSTALLED PER DETAIL "6". A 2 1/2" PVC CONDULET SHALL BE INSTALLED ON THE 2 1/2" PVC CONDUIT FOR EACH GLIDE SLOPE ANTENNA, CENTERED AT THE ANTENNA'S HEIGHT ABOVE GRADE. THE TEE OF EACH CONDULET SHALL BE ORIENTED TOWARD THE ANTENNA. INSTALL REDUCING BUSHINGS IN THE TEE TO FACILITATE INSTALLATION OF A 1" CONDUIT.
4. TOWER GROUND ASSEMBLY IS PROVIDED WITH A 6 AWG BARE COPPER WIRE ATTACHED. THE 6 AWG BARE COPPER SHALL BE REMOVED AND REPLACED WITH A 2 AWG BARE COPPER WIRE. SEE NOTE 7.
5. ANTENNA RF CABLES WILL BE FURNISHED AND INSTALLED BY FAA INSTALLATION PERSONNEL.
6. THE CONDUIT SHALL ENTER THE TOP OF THE RF AND CONTROL INTERFACE JUNCTION BOX AS CLOSE TO THE SIDE AS POSSIBLE, CENTERED 4" FROM THE BACK.
7. ALL CONNECTIONS TO GROUNDING RODS SHALL BE MADE USING EXOTHERMIC WELDS PER SPECIFICATIONS.
8. ANTENNA TOWER LIGHTNING PROTECTION SHALL BE INSTALLED PER THE REQUIREMENTS OF NFPA 780. CONTRACTOR SHALL INSTALL A 48" LONG AIR TERMINAL, THOMPSON NO. 66B1T, AND THOMPSON NO. 32 DOWN CONDUCTOR ON THE INSIDE OF TWO TOWER LEGS, SECURED TO THE TOWER USING THOMPSON CLAMPS @ 3" O.C. MAX. DOWN CONDUCTORS SHALL TERMINATE AT SEPARATE GROUNDING RODS. SEE NOTE 7. SEE SHEET 44 "ELECTRICAL DETAILS 2" FOR AIR TERMINAL MOUNTING DETAIL.
9. REFER TO GOVERNMENT-FURNISHED PROPERTY LIST (GFPL) FOR ITEMS FURNISHED BY THE FAA.



7 DETAIL SCALE: NONE

DEPARTMENT OF TRANSPORTATION FEDERAL AVIATION ADMINISTRATION GREAT LAKES REGION		CHICAGO, ILLINOIS	
GLIDE SLOPE ANTENNA TOWER ELECTRICAL AND GROUNDING DETAILS RUNWAY 02			
DEKALB		DEKALB TAYLOR MUNICIPAL AIRPORT	
REVIEWED BY	SUBMITTED BY	APPROVED BY	
PROJ. ENGR.	TAD	ISSUE BY	PLATFORM MGR.
DATE	DATE	CHICAGO NAS	DATE
DRWN	TAD	IMPLEMENTATION	DRWING NO.
DRWN	EGS	CENTER	DKB-D-GS02-E01

PLOT DATE = 03/27/2007, 12:34 PM  
 FILE NAME = I:\Airports\DEKALB\B03-08ELED\Airport\Sheet\Micro-Station\Sheet\US TWR ELEC DTLS.dgn  
 PLOT SCALE = 20 13/16 "/ IN.  
 USER NAME = kdc