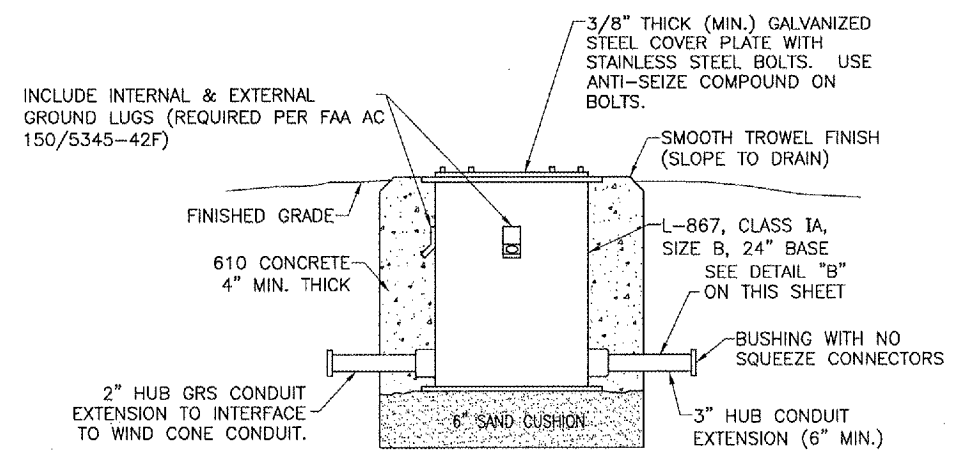
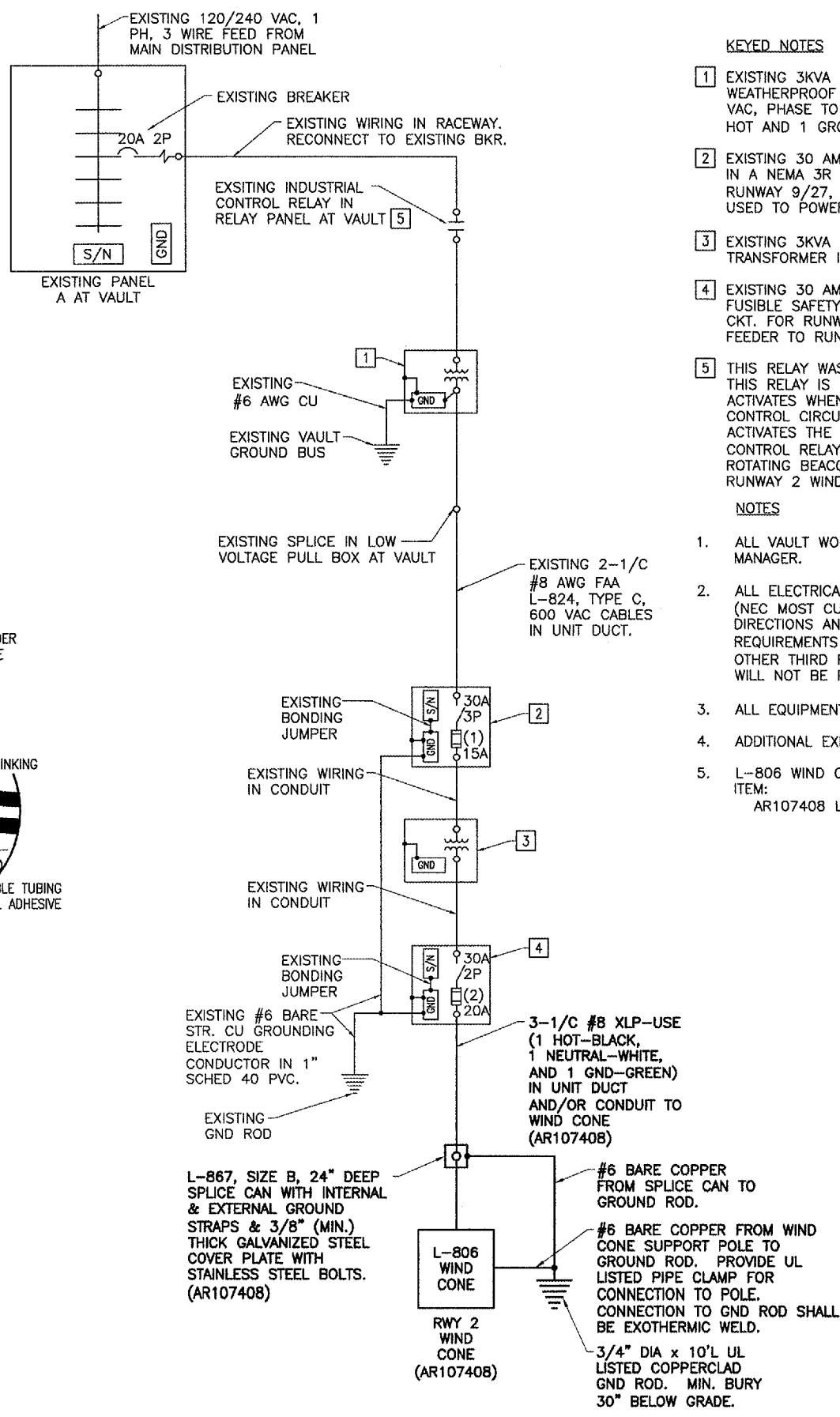


NOTE: WIND CONE SHALL ALSO INCLUDE INTERNAL LIGHTING OPTION



SPLICE CAN DETAIL FOR WIND CONE (NOT TO SCALE)



ELECTRICAL ONE LINE DIAGRAM RWY 2 SUPPLEMENTAL WIND CONE

KEYED NOTES

- EXISTING 3KVA 240 VAC TO 480 VAC, 1 PHASE, 2 WIRE STEP UP TRANSFORMER IN A WEATHERPROOF HOUSING, ACME CAT. NO. T-2-53013-S. SECONDARY IS WIRED 480 VAC, PHASE TO PHASE WITH ONE SECONDARY LEAD BONDED TO GROUND. OUTPUT IS 1 HOT AND 1 GROUNDED (NEUTRAL) CONDUCTOR. (PREVIOUSLY FOR RUNWAY 2 REILS)
- EXISTING 30 AMP, 3 POLE, 600 VAC, UL LISTED HEAVY DUTY FUSIBLE SAFETY SWITCH IN A NEMA 3R & 12 ENCLOSURE, LOCATED IN THE AREA BETWEEN TAXIWAY C-1, RUNWAY 9/27, TAXIWAY C, & RUNWAY 2/20. THIS SAFETY SWITCH WAS PREVIOUSLY USED TO POWER THE REILS ON RUNWAY END 2.
- EXISTING 3KVA 480 VAC TO 120/240 VAC, 1 PHASE, 3 WIRE, 60HZ STEP DOWN TRANSFORMER IN A WEATHERPROOF HOUSING, ACME CAT. NO. T-2-53013-S.
- EXISTING 30 AMP, 2 POLE WITH SOLID NEUTRAL, 240VAC, UL LISTED HEAVY DUTY FUSIBLE SAFETY SWITCH IN A NEMA 3R & 12 ENCLOSURE. DISCONNECT EXISTING 240V CKT. FOR RUNWAY 2 REILS. CONNECT PHASE A, NEUTRAL, & GROUND TO 120 VAC FEEDER TO RUNWAY 2 WIND CONE.
- THIS RELAY WAS PREVIOUSLY USED TO CONTROL THE RUNWAY 2 REILS. CONTROL FOR THIS RELAY IS CONNECTED TO THE INTERFACE PANEL FOR RUNWAY 2-20 AND ACTIVATES WHEN THE RUNWAY LIGHTS ARE AT 100% BRIGHTNESS. RECONNECT THE CONTROL CIRCUIT TO ACTIVATE THE RUNWAY 2 WIND CONE BY THE PHOTOCELL THAT ACTIVATES THE MAIN L-807 WIND CONE AND THE AIRPORT ROTATING BEACON. THE CONTROL RELAY/CONTACTOR FOR THE MAIN L-807 WIND CONE & THE AIRPORT ROTATING BEACON ARE LOCATED IN THE SAME RELAY PANEL AS THE RELAY FOR THE RUNWAY 2 WIND CONE.

NOTES

- ALL VAULT WORK AND/OR POWER OUTAGES SHALL BE COORDINATED WITH THE AIRPORT MANAGER.
- ALL ELECTRICAL EQUIPMENT SHALL BE INSTALLED IN CONFORMANCE WITH NFPA 70 (NEC MOST CURRENT ISSUE IN FORCE), THE RESPECTIVE EQUIPMENT MANUFACTURER'S DIRECTIONS AND ALL OTHER APPLICABLE LOCAL CODES, LAWS, ORDINANCES AND REQUIREMENTS IN FORCE. ANY INSTALLATIONS WHICH VOID THE U.L. LISTING (OR OTHER THIRD PARTY LISTING) AND/OR THE MANUFACTURER'S WARRANTY OF A DEVICE WILL NOT BE PERMITTED.
- ALL EQUIPMENT NOT LABELED AS "EXISTING" IS NEW.
- ADDITIONAL EXISTING CIRCUITS NOT SHOWN FOR CLARITY.
- L-806 WIND CONE AND ASSOCIATED CABLE & VAULT WORK WILL BE PAID FOR UNDER ITEM: AR107408 L-806 WIND CONE--8' LIGHTED ____ PER EACH.

LEGEND PLATE SCHEDULE	
DEVICE	LABEL
INDUSTRIAL CONTROL RELAY AT THE VAULT THAT CONTROLS RUNWAY 2 WIND CONE (PREVIOUSLY FOR RUNWAY 2 REILS)	RUNWAY 2 WIND CONE
STEP-UP TRANSFORMER IN THE VAULT FOR THE RUNWAY 2 WIND CONE (PREVIOUSLY FOR RUNWAY 2 REILS)	STEP-UP XFMR RUNWAY 2 WIND CONE 240V TO 480V
PRIMARY DISCONNECT FOR STEP-DOWN TRANSFORMER THAT SERVES THE RUNWAY 2 WIND CONE (PREVIOUSLY FOR RUNWAY 2 REILS)	STEP-DOWN XFMR DISCONNECT, 480V FED FROM VAULT
STEP-DOWN TRANSFORMER FOR THE RUNWAY 2 WIND CONE (PREVIOUSLY FOR RUNWAY 2 REILS)	STEP-DOWN XFMR RUNWAY 2 WIND CONE 480V TO 120/240V
SECONDARY DISCONNECT FOR STEP-DOWN TRANSFORMER THAT SERVES THE RUNWAY 2 WIND CONE (PREVIOUSLY FOR RUNWAY 2 REILS)	RUNWAY 2 WIND CONE DISCONNECT 120/240 VAC

NOTE: LEGEND PLATES SHALL BE WEATHERPROOF ENGRAVED PLASTIC OR PHENOLIC MATERIAL, 1/4" HIGH WHITE LETTERS ON A RED BACKGROUND UNLESS NOTED OTHERWISE. SECURE WITH WEATHERPROOF ADHESIVE OR MACHINE SCREWS. FURNISH ADDITIONAL LEGEND PLATES WHERE REQUIRED BY CODE, FOR ADDITIONAL EQUIPMENT, AS DETAILED HEREIN ON THE PLANS, AND AS NOTED IN THE SPECIAL PROVISION SPECIFICATIONS.

BY: _____

REVISION: _____

DATE: _____

DIMAX
DEKALB TAYLOR MUNICIPAL AIRPORT

IL PROJ: DK8-3225 A.I.P. PROJ: 3-17-0139-837

HANSON PROJECT No. 803-06ELEC
 Estimate: R-541ELE.DWG
 Scale: NOT TO SCALE
 Date: 07/24/07

LAYOUT	KNL	07/24/07
DRAWN	BAK	07/24/07
REVIEWED	CAH	07/24/07

HANSON
 Hanson Professional Services Inc.
 1525 South Sixth Street
 Springfield, Illinois 62703-2886
 Offices Nationwide

DEKALB AIRPORT IMPROVEMENTS

WIND CONE DETAILS

48B
 48B of 48 sheets

JUL 25, 2007 10:32 AM BAK I:\AIRPORTS\DEKALB\803-06ELEC\AIRPORT\SHEETS\VAUTO-CADD\SHEETS\R-541ELE.DWG - PROPOSED