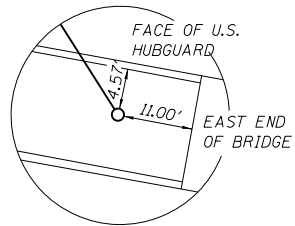
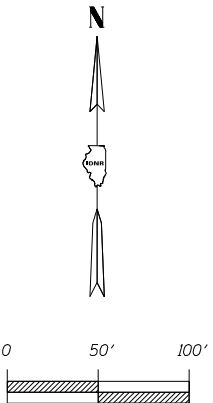
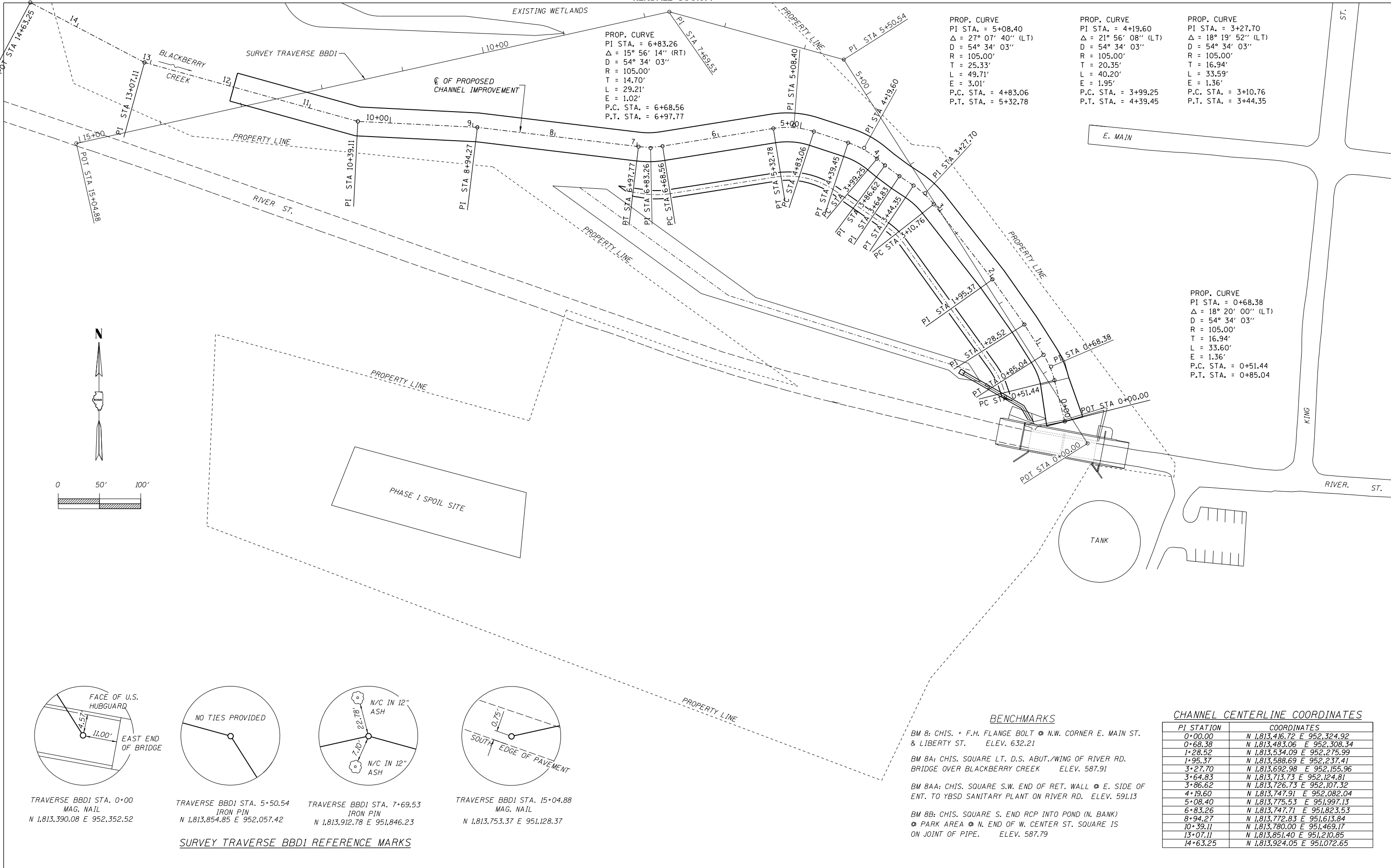


O:\OwrProj\m\Projects\Blackberry Creek\Plan Sheets\Survey Traverse and Centerline Coordinates.dgn

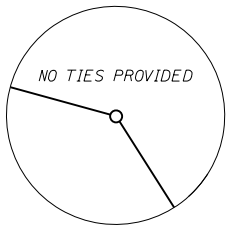
10:19:56 AM

8/24/2012

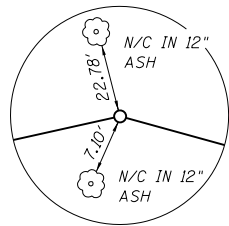
DESIGNED BY: JJF
DRAWN BY: JJF
CHECKED BY: TMM
CHECKED BY: TMM



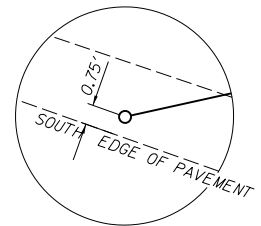
TRAVERSE BBD1 STA. 0+00
MAG. NAIL
N 1,813,390.08 E 952,352.52



TRAVERSE BBD1 STA. 5+50.54
IRON PIN
N 1,813,854.85 E 952,057.42



TRAVERSE BBD1 STA. 7+69.53
IRON PIN
N 1,813,912.78 E 951,846.23



TRAVERSE BBD1 STA. 15+04.88
MAG. NAIL
N 1,813,753.37 E 951,128.37

SURVEY TRAVERSE BBD1 REFERENCE MARKS

PROP. CURVE
PI STA. = 6+83.26
 $\Delta = 15^\circ 56' 14''$ (RT)
D = 54° 34' 03"
R = 105.00'
T = 14.70'
L = 29.21'
E = 1.02'
P.C. STA. = 6+68.56
P.T. STA. = 6+97.77

PROP. CURVE
PI STA. = 5+08.40
 $\Delta = 27^\circ 07' 40''$ (LT)
D = 54° 34' 03"
R = 105.00'
T = 25.33'
L = 49.71'
E = 3.01'
P.C. STA. = 4+83.06
P.T. STA. = 5+32.78

PROP. CURVE
PI STA. = 4+19.60
 $\Delta = 21^\circ 56' 08''$ (LT)
D = 54° 34' 03"
R = 105.00'
T = 20.35'
L = 40.20'
E = 1.95'
P.C. STA. = 3+99.25
P.T. STA. = 4+39.45

PROP. CURVE
PI STA. = 3+27.70
 $\Delta = 18^\circ 19' 52''$ (LT)
D = 54° 34' 03"
R = 105.00'
T = 16.94'
L = 33.59'
E = 1.36'
P.C. STA. = 3+10.76
P.T. STA. = 3+44.35

PROP. CURVE
PI STA. = 0+68.38
 $\Delta = 18^\circ 20' 00''$ (LT)
D = 54° 34' 03"
R = 105.00'
T = 16.94'
L = 33.60'
E = 1.36'
P.C. STA. = 0+51.44
P.T. STA. = 0+85.04

BENCHMARKS

- BM 8: CHIS. + F.H. FLANGE BOLT @ N.W. CORNER E. MAIN ST. & LIBERTY ST. ELEV. 632.21
- BM 8A: CHIS. SQUARE LT. D.S. ABUT./WING OF RIVER RD. BRIDGE OVER BLACKBERRY CREEK ELEV. 587.91
- BM 8AA: CHIS. SQUARE S.W. END OF RET. WALL @ E. SIDE OF ENT. TO YBSD SANITARY PLANT ON RIVER RD. ELEV. 591.13
- BM 8B: CHIS. SQUARE S. END RCP INTO POND (N. BANK) @ PARK AREA @ N. END OF W. CENTER ST. SQUARE IS ON JOINT OF PIPE. ELEV. 587.79

CHANNEL CENTERLINE COORDINATES

PI STATION	COORDINATES
0+00.00	N 1,813,416.72 E 952,324.92
0+68.38	N 1,813,483.06 E 952,308.34
1+28.52	N 1,813,534.09 E 952,275.99
1+95.37	N 1,813,588.69 E 952,237.41
3+27.70	N 1,813,692.98 E 952,155.96
3+64.83	N 1,813,713.73 E 952,124.81
3+86.62	N 1,813,726.73 E 952,107.32
4+19.60	N 1,813,747.91 E 952,082.04
5+08.40	N 1,813,775.53 E 951,997.13
6+83.26	N 1,813,747.71 E 951,823.53
8+94.27	N 1,813,772.83 E 951,613.84
10+39.11	N 1,813,780.00 E 951,469.17
13+07.11	N 1,813,851.40 E 951,210.85
14+63.25	N 1,813,924.05 E 951,072.65