

F.A.I. RTE.	SECTION	COUNTY	TOTAL SHEETS	SHEET NO.
VAR	D3 OVD SIN STR REPL 13-08	KANKAKEE	19	1
		ILLINOIS	CONTRACT NO. 46221	

STATE OF ILLINOIS
DEPARTMENT OF TRANSPORTATION
DIVISION OF HIGHWAYS
**PROPOSED
HIGHWAY PLANS**

VARIOUS ROUTES
SECTION D3 OVD SIN STR REPL 13-08

**OVERHEAD SIGN TRUSS PAINTING, AND MINOR REPAIRS.
KANKAKEE COUNTY**

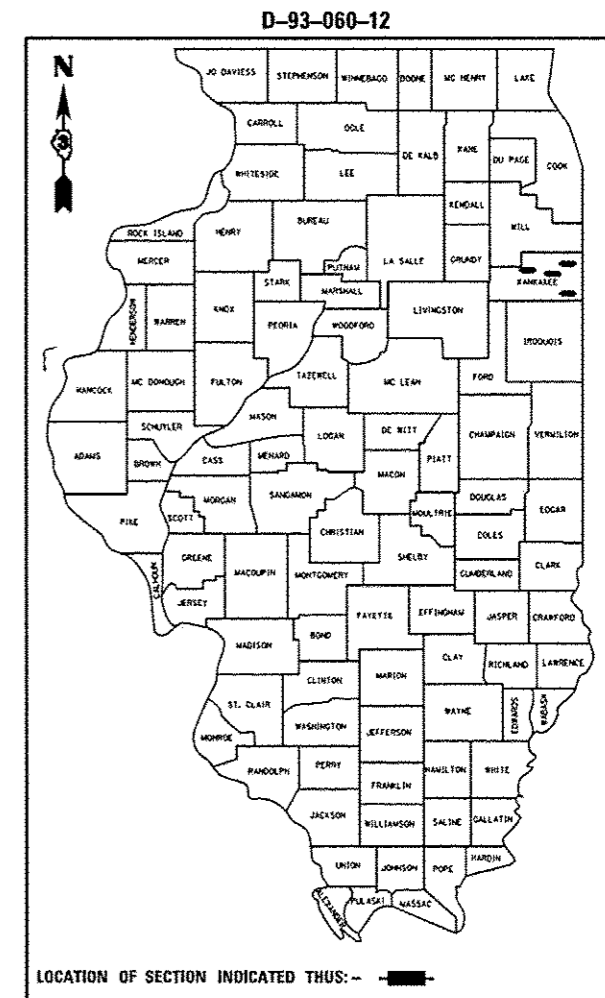
C-60-008-13

INDEX OF SHEETS

1. COVER SHEET
2. GENERAL NOTES
3. SUMMARY OF QUANTITIES
- 4.-5. TYPICAL SECTIONS
6. SCHEDULES
7. TEMPORARY SIGNAGE
- 8.-15. CANTILEVER TRUSS DETAIL
- 15.-19. SIGN PANEL DETAILS

STANDARDS

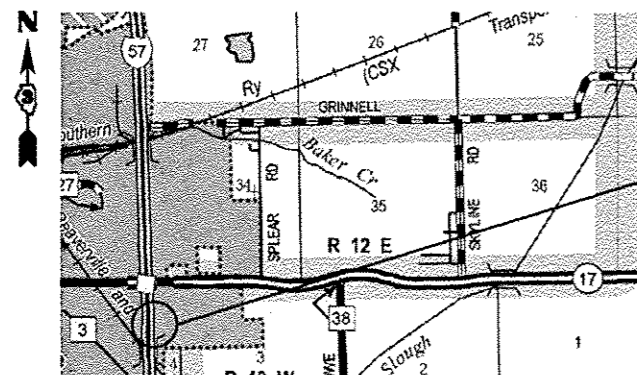
- | | |
|-----------|---|
| 000001-06 | STANDARD SYMBOLS, ABBREVIATIONS AND PATTERNS |
| 001001-02 | AREAS OF REINFORCEMENT BARS |
| 001006 | DECIMAL OF AN INCH AND OF A FOOT |
| 701001-02 | OFF-ROAD OPERATIONS 2L, 2W, MORE THAN 15' (4.5 m) AWAY PAVEMENT EDGE |
| 701006-03 | OFF-ROAD OPERATIONS 2L, 2W, 15' (4.5 m) TO 24" (600 mm) FROM PAVEMENT EDGE |
| 701101-02 | OFF-ROAD OPERATIONS MULTILANE, 15' (4.5 m) TO 24" (600 mm) FROM PAVEMENT EDGE |
| 701106-02 | OFF-ROAD OPERATIONS, MULTILANE, MORE THAN 15' (4.5 m) AWAY |
| 701601-07 | URBAN LANE CLOSURE MULTILANE 1W, OR 2W, WITH NONTRAVERSABLE MEDIAN |
| 701602-05 | URBAN LANE CLOSURE MULTILANE 2W, WITH BIDIRECTIONAL LEFT TURN LANE |
| 701901-02 | TRAFFIC CONTROL DEVICES |



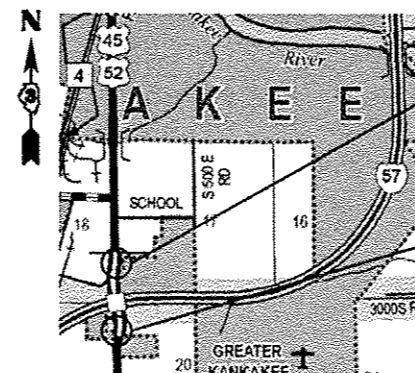
LOCATION OF SECTION INDICATED THIS: —

FUNCTIONAL CLASSIFICATION

URBAN - PRINCIPAL ARTERIAL		URBAN - INTERSTATE	
FAP 330	FAP 332	FAP 840	FAL ROUTE 57
2011 ADT = 15100	2011 ADT = 9950	2011 ADT = 12900	2011 ADT = 18100
P.V. = 75.64%	P.V. = 87.69%	P.V. = 93.99%	P.V. = 77.66%
M.U. = 15.81%	M.U. = 4.52%	M.U. = 3.10%	M.U. = 17.26%
S.U. = 8.55%	S.U. = 7.79%	S.U. = 2.91%	S.U. = 5.08%

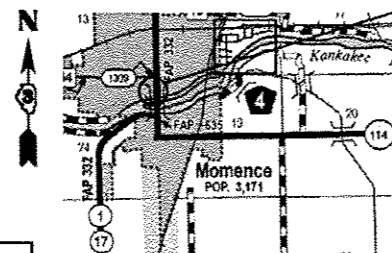


LOCATION 1 - FAI ROUTE 57
CANTILEVER SIGN STRUCTURE
S.N.# 3C0461057R311.5
I-57
(EXISTING STA. 208 + 43 NBL)

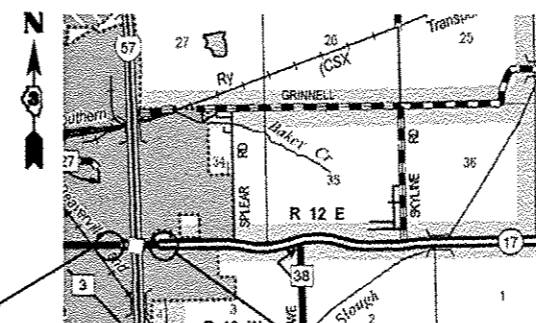


LOCATION 2 - FAP 840 US 45 /52 AT I - 57
CANTILEVER SIGN STRUCTURE
S.N.# 3C046U045L004.9
US 45 /52 - NB
(EXISTING STA. 136 + 42 RT)

LOCATION 3 - FAP 840 US 45 /52 AT I - 57
CANTILEVER SIGN STRUCTURE
S.N.# 3C046U045R005.1
US 45 /52 - SB
(EXISTING STA. 127 + 21 LT)



LOCATION 4 - FAP 332 IL 1/17
CANTILEVER SIGN STRUCTURE
S.N.# 3C046S017L011.2
IL 1/17 - SB
(EXISTING STA. 19 + 93)



LOCATION 5 - FAP 330 IL 17 AT I - 57
CANTILEVER SIGN STRUCTURE
S.N.# 3C046S017R014.1
IL 17 - EB
(EXISTING STA. 130 + 84)

LOCATION 6 - FAP 330 IL 17 AT I - 57
CANTILEVER SIGN STRUCTURE
S.N.# 3C046S017L014.3
IL 17 - WB
(EXISTING STA. 135 + 90)

J.U.L.I.E.
JOINT UTILITY LOCATION INFORMATION FOR EXCAVATION
1-800-892-0123
OR 811

DISTRICT 3 NO. (815) 434-6131
PROJECT ENGINEER: JOE KANNEL, P.E.
UNIT CHIEF: RON WOODSHANK
CONTRACT NO. 46221

STATE OF ILLINOIS
DEPARTMENT OF TRANSPORTATION
DIVISION OF HIGHWAYS

SUBMITTED *May 23 2012*
PASSED *Justin Murray*
ENGINEER OF OPERATIONS

August 17 2012
John D. Baranzelli, P.E.
acting ENGINEER OF DESIGN AND ENVIRONMENT

APPROVED *August 17 2012*
William R. Taylor
acting DIRECTOR DIVISION OF HIGHWAYS

**PRINTED BY THE AUTHORITY
OF THE STATE OF ILLINOIS**