

SUBSURFACE UTILITY ENGINEERING (S.U.E.)
UTILIZED ON THIS PROJECT

FOR INDEX OF SHEETS, SEE SHEET NO. 2
FOR LIST OF HIGHWAY STANDARDS, SEE SHEET NO. 2

VILLAGE OF MONTGOMERY

VILLAGE OF OSWEGO

US ROUTE 30 POSTED & DESIGN SPEED LIMIT - 45 MPH

DESIGN DESIGNATION - 35,214(30) OTHER PRINCIPAL ARTERIAL 9.90(PCC-30)

THIS PROJECT REQUIRED A SECTION 404 PERMIT AND NPDES PERMIT.

STATE OF ILLINOIS
DEPARTMENT OF TRANSPORTATION
DIVISION OF HIGHWAYS

PROPOSED
HIGHWAY PLANS

FAP ROUTE 349 (US ROUTE 30)
BRIARCLIFF ROAD TO US ROUTE 34
SECTION 11 WRS-3
PROJECT: F-0349(017)

ADDED LANES, NOISE ABATEMENT WALLS,
AND BRIDGE REPLACEMENT
KENDALL COUNTY

C-91-015-10

BRIDGE REPLACEMENT
STA. 420 + 27.50
EXIST SN 047-0032
PROP SN 047-0301

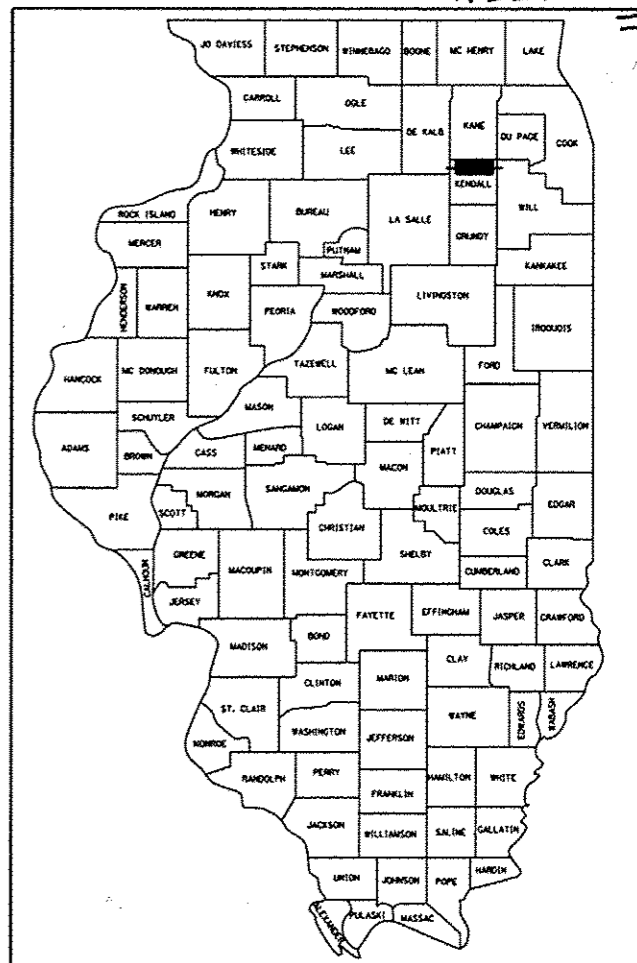
END IMPROVEMENT
STA. 438 + 40.00

*528 42=530

F.A.P. RTE.	SECTION	COUNTY	TOTAL SHEETS	SHEET NO.
349	11 WRS-3	KENDALL	627	1
FED. ROAD DIST. NO. 1	ILLINOIS	CONTRACT NO. 60132		

D-91-015-10

*527+2=529
*529-1=528



LOCATION OF SECTION INDICATED THUS: - ■ -

FUNCTIONAL CLASSIFICATION
OTHER PRINCIPAL ARTERIAL
2010 ADT = 30,500
P.V. = 95.2% S.U. = 2.3% M.U. = 2.5%

STATE OF ILLINOIS
DEPARTMENT OF TRANSPORTATION
DIVISION OF HIGHWAYS

SUBMITTED MAY 8, 20 12

Diane M. O'Keefe
DEPUTY DIRECTOR OF HIGHWAYS, REGION ENGINEER

August 17, 2012
John D. Baumgardner P.E.
ENGINEER OF DESIGN AND ENVIRONMENT

August 17, 2012
William R. Freyler
DIRECTOR OF HIGHWAYS, CHIEF ENGINEER

PRINTED BY THE AUTHORITY
OF THE STATE OF ILLINOIS

Rev. 9-10-12

STRAND ASSOCIATES, INC.
IDFPR NO. 184001273

Marc A. Grigas
062-000286
LICENSED PROFESSIONAL ENGINEER
OF ILLINOIS
3/16/12 exp. 4/30/13

MARC A. GRIGAS, P.E.
THIS STAMP APPLIES TO DRAWINGS NO.

Anthony J. Standish
081-005818
LICENSED PROFESSIONAL ENGINEER
OF ILLINOIS
3/15/12 exp. 11/30/2012

ANTHONY J. STANDISH, P.E., S.E.
THIS STAMP APPLIES TO DRAWINGS NO.

LIN ENGINEERING, LTD.
IDFPR NO. 184001181

Fred M. Lin
062-056704
LICENSED PROFESSIONAL ENGINEER
OF ILLINOIS
3/15/12 exp. 11/30/13

FRED M. LIN, P.E.
THIS STAMP APPLIES TO DRAWINGS NO.

Michael T. Haley
081-5991
LICENSED PROFESSIONAL ENGINEER
OF ILLINOIS
3/15/12 exp. 11/30/12

MICHAEL T. HALEY, S.E.
THIS STAMP APPLIES TO DRAWINGS NO.

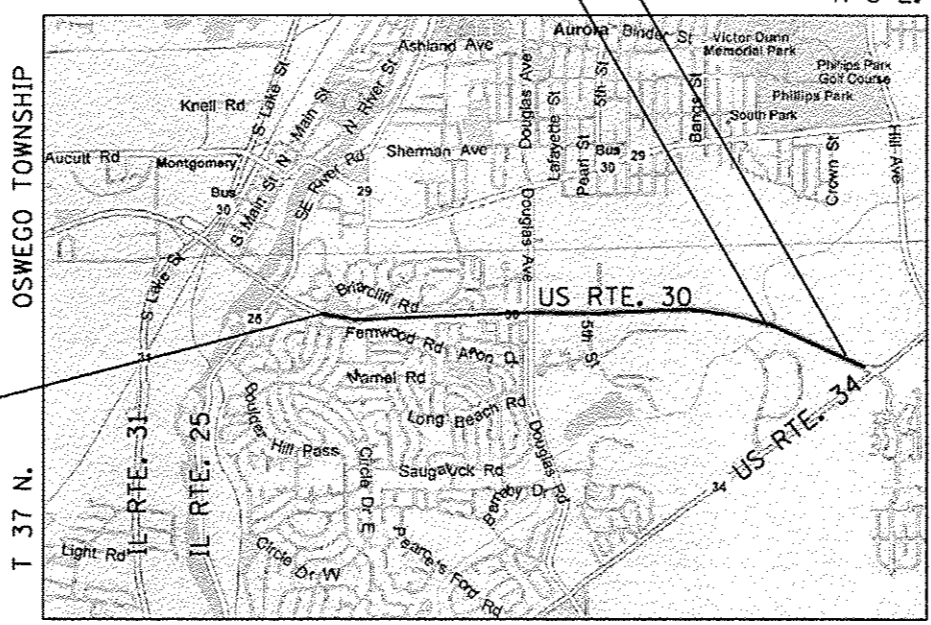
SINGH & ASSOCIATES, INC.
IDFPR NO. 184001139

Vytas Pelegrimas
082-062214
LICENSED PROFESSIONAL ENGINEER
OF ILLINOIS
3/15/12 exp. 11/30/15

VYTAS PELEGRIMAS, P.E.
THIS STAMP APPLIES TO DRAWINGS NO.

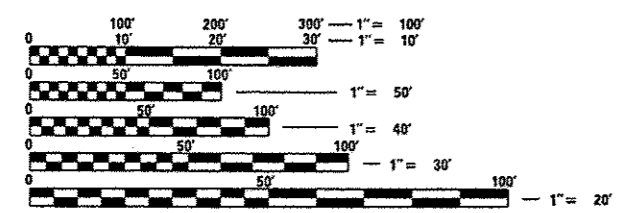
Angela C. Giovannone
082-057957
REGISTERED PROFESSIONAL ENGINEER
OF ILLINOIS
3/16/12 exp. 11/30/13

ANGELA GIOVANNONE, P.E.
THIS STAMP APPLIES TO DRAWINGS NO.



LOCATION MAP
NOT TO SCALE

GROSS LENGTH = 12,693.00 FT. = 2.404 MILE
NET LENGTH = 12,693.00 FT. = 2.404 MILE



FULL SIZE PLANS HAVE BEEN PREPARED USING STANDARD ENGINEERING SCALES. REDUCED SIZED PLANS WILL NOT CONFORM TO STANDARD SCALES. IN MAKING MEASUREMENTS ON REDUCED PLANS, THE ABOVE SCALES MAY BE USED.

J.U.L.I.E.
JOINT UTILITY LOCATION INFORMATION FOR EXCAVATION
1-800-892-0123
OR 811



PROJECT ENGINEER: CRAIG BAUER, 847-705-4265
PROJECT MANAGER: LONG TRAN, P.E., 847-705-4232
CONTRACT NO. 60132