

SUBSURFACE UTILITY ENGINEERING (S.U.E.)
UTILIZED ON THIS PROJECT

FOR INDEX OF SHEETS, SEE SHEET NO. 2
FOR LIST OF HIGHWAY STANDARDS, SEE SHEET NO. 2

VILLAGE OF MONTGOMERY

VILLAGE OF OSWEGO

US ROUTE 30 POSTED & DESIGN SPEED LIMIT - 45 MPH

DESIGN DESIGNATION - 35,214(30) OTHER PRINCIPAL ARTERIAL 9.90(PCC-30)

THIS PROJECT REQUIRED A SECTION 404 PERMIT AND NPDES PERMIT.

STATE OF ILLINOIS
DEPARTMENT OF TRANSPORTATION
DIVISION OF HIGHWAYS

**PROPOSED
HIGHWAY PLANS**

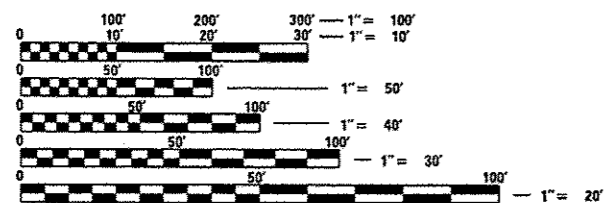
FAP ROUTE 349 (US ROUTE 30)
BRIARCLIFF ROAD TO US ROUTE 34
SECTION 11 WRS-3
PROJECT: F-0349(017)

**ADDED LANES, NOISE ABATEMENT WALLS,
AND BRIDGE REPLACEMENT
KENDALL COUNTY**

C-91-015-10

BRIDGE REPLACEMENT
STA. 420 + 27.50
EXIST SN 047-0032
PROP SN 047-0301

END IMPROVEMENT
STA. 438 + 40.00

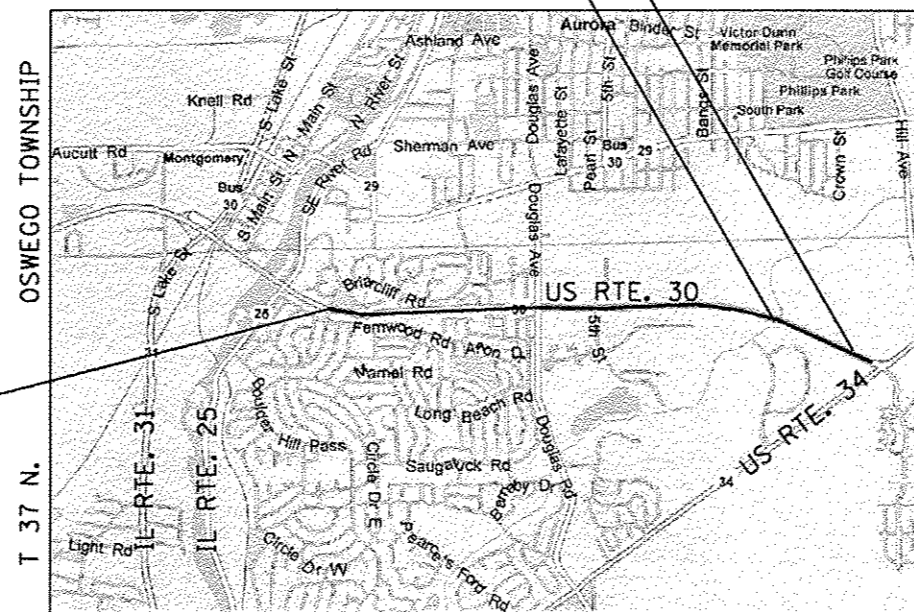


FULL SIZE PLANS HAVE BEEN PREPARED USING STANDARD
ENGINEERING SCALES. REDUCED SIZED PLANS WILL NOT
CONFORM TO STANDARD SCALES. IN MAKING MEASUREMENTS
ON REDUCED PLANS, THE ABOVE SCALES MAY BE USED.

J.U.L.I.E.
JOINT UTILITY LOCATION INFORMATION FOR EXCAVATION
1-800-892-0123
OR 811



PROJECT ENGINEER: CRAIG BAUER, 847-705-4265
PROJECT MANAGER: LONG TRAN, P.E., 847-705-4232
CONTRACT NO. 60132



LOCATION MAP
NOT TO SCALE

GROSS LENGTH = 12,693.00 FT. = 2.404 MILE
NET LENGTH = 12,693.00 FT. = 2.404 MILE

*528 42=530

F.A.P. RTE.	SECTION	COUNTY	TOTAL SHEETS	SHEET NO.
349	11 WRS-3	KENDALL	627	1
FED. ROAD DIST. NO. 1	ILLINOIS	CONTRACT NO. 60132		

D-91-015-10

*527+2=529
*529-1=528



LOCATION OF SECTION INDICATED THUS: - ■ -

STRAND ASSOCIATES, INC.
IDFPR NO. 184001273
MARC A. GRIGAS, P.E.
062-000286
LICENSED PROFESSIONAL ENGINEER
OF ILLINOIS
3/16/12 exp. 4/30/13

ANTHONY J. STANDISH, P.E., S.E.
081-005818
LICENSED PROFESSIONAL ENGINEER
OF ILLINOIS
3/15/12 exp. 11/30/2012

ANTHONY J. STANDISH, P.E., S.E.
THIS STAMP APPLIES TO DRAWINGS NO.

LIN ENGINEERING, LTD.
IDFPR NO. 184001181

FRED M. LIN, P.E.
062-056704
LICENSED PROFESSIONAL ENGINEER
OF ILLINOIS
3/15/12 exp. 11/30/13

FRED M. LIN, P.E.
THIS STAMP APPLIES TO DRAWINGS NO.

MICHAEL T. HALEY, S.E.
81-5991
HATHAM
LICENSED PROFESSIONAL ENGINEER
OF ILLINOIS
3/15/12 exp. 11/30/12

MICHAEL T. HALEY, S.E.
THIS STAMP APPLIES TO DRAWINGS NO.

VYTAS PELEGRIMAS, P.E.
062-062214
LICENSED PROFESSIONAL ENGINEER
OF ILLINOIS
3/15/12 exp. 11/30/15

VYTAS PELEGRIMAS, P.E.
THIS STAMP APPLIES TO DRAWINGS NO.

ANGELA GIOVANNONE, P.E.
062-057957
REGISTERED PROFESSIONAL ENGINEER
OF ILLINOIS
3/16/12 exp. 11/30/13

ANGELA GIOVANNONE, P.E.
THIS STAMP APPLIES TO DRAWINGS NO.

FUNCTIONAL CLASSIFICATION
OTHER PRINCIPAL ARTERIAL
2010 ADT = 30,500
P.V. = 95.2% S.U. = 2.3% M.U. = 2.5%

STATE OF ILLINOIS
DEPARTMENT OF TRANSPORTATION
DIVISION OF HIGHWAYS
SUBMITTED MAY 8, 2012
Dina M. O'Keefe
DEPUTY DIRECTOR OF HIGHWAYS, REGION ENGINEER
August 17, 2012
John D. Baumgardner, P.E.
ENGINEER OF DESIGN AND ENVIRONMENT
August 17, 2012
William R. Freyer
DIRECTOR OF HIGHWAYS, CHIEF ENGINEER

**PRINTED BY THE AUTHORITY
OF THE STATE OF ILLINOIS**

Rev. 9-10-12

IDOT DISTRICT ONE STANDARD DETAILS:

BD-01	DRIVEWAY DETAILS - DISTANCE BETWEEN R.O.W. AND FACE OF CURB & EDGE OF SHOULDER > 15' (4.5m)
BD-02	DRIVEWAY DETAILS DISTANCE BETWEEN ROW AND FACE OF CURB < 15' (4.5m)
BD-07	DETAIL OF STORM SEWER CONNECTION TO EXISTING SEWER
BD-12	MANHOLE WITH RESTRICTOR PLATE
BD-22	PAVEMENT PATCHING FOR HMA SURFACED PAVEMENT
BD-24	CURB OR CURB AND GUTTER REMOVAL AND REPLACEMENT
BD-32	BUTT JOINTS AND HMA TAPER
BD-34	STEEL PLATE BEAM GUARDRAIL ADJACENT TO CURB AND GUTTER AND STABILIZATION AT TTY, 1 SPL.
BD-37	MANHOLE TYPE A 7-FOOT DIAMETER
BD-48	PCC PAVEMENT ROUNDOUTS AT CURB AND GUTTER
BD-51	BENCHING DETAIL FOR EMBANKMENT WIDENING
BD-52	DETAIL OF PAVEMENT SEPARATION JOINT FOR JOINTED PCC PAVEMENTS AT INTERSECTIONS
BE-220	ELECTRIC SERVICE INSTALLATION AERIAL, REMOTE DISCONNECT
BE-301	LIGHT POLE FOUNDATION 40' (12.192 m) TO 47 1/2' (14.478 m) M.H. 15" (381 mm) BOLT CIRCLE
BE-410	DAVIT LIGHT POLE 47'-6" (14.478 m) MOUNTING HEIGHT
BE-701	LUMINAIRE SAFETY CABLE ASSEMBLY
BE-702	MISC. ELECTRICAL DETAILS SHEET A
BE-800	TEMPORARY LIGHT POLE DETAILS
BE-805b	TEMPORARY LIGHTING AND TRAFFIC SIGNALS FOR SINGLE LANE STAGING
BE-805c	TEMPORARY LIGHTING AND TRAFFIC SIGNALS FOR SINGLE LANE STAGING
TC-10	TRAFFIC CONTROL AND PROTECTION FOR SIDE ROADS, INTERSECTIONS, AND DRIVEWAYS
TC-11	RAISED REFLECTIVE PAVEMENT MARKERS (SNOW PLOW RESISTANT)
TC-13	DISTRICT ONE TYPICAL PAVEMENT MARKINGS
TC-14	TRAFFIC CONTROL AND PROTECTION AT TURN BAYS (TO REMAIN OPEN TO TRAFFIC)
TC-16	PAVEMENT MARKING LETTERS AND SYMBOLS FOR TRAFFIC STAGING
TC-18	SIGNING FOR FLAGGING OPERATIONS AT WORK ZONE OPENINGS
TC-22	ARTERIAL ROAD INFORMATION SIGN
TC-26	DRIVEWAY ENTRANCE SIGNING
TS-05	STANDARD TRAFFIC SIGNAL DESIGN DETAILS

INDEX OF SHEETS


SHEET NO.	DESCRIPTION
1	COVER VOLUME I OF II
2-3	INDEX OF SHEETS & STANDARDS
4	GENERAL NOTES
5-32	SUMMARY OF QUANTITIES
33-42	TYPICAL SECTIONS
43-65	SCHEDULE OF QUANTITIES
66-67	HORIZONTAL ALIGNMENTS
68-70	TIES & BENCHMARKS
71-76	ROADWAY REMOVAL SHEETS
77-89	ROADWAY PLAN AND PROFILES SHEETS
90-141	MAINTENANCE OF TRAFFIC SHEETS
142-151	TEMPORARY EROSION CONTROL SHEETS
152-156	TEMPORARY DITCH PROFILE SHEETS
157-164	DRAINAGE SCHEDULES AND LEGEND
165-176	DRAINAGE AND UTILITY PLAN & PROFILE SHEETS
177	COMPENSATORY STORAGE GRADING PLAN
178-184	WATER MAIN PLANS
185-198	SUBSURFACE UTILITY ENGINEERING SHEETS
199-218b	RIGHT-OF-WAY SHEETS
219-221	INTERSECTION DETAIL SHEETS
222-235	PAVEMENT MARKING AND SIGNING SHEETS
236-249	PERMANENT EROSION CONTROL & LANDSCAPING
250-281	TRAFFIC SIGNAL SHEETS
282-287	LIGHTING SHEETS
288	COVER VOLUME II OF II — OMITTED
289-320	STRUCTURAL SHEETS
* 321-339A	NOISE WALL PLANS
340-341	CONSTRUCTION DETAILS
342-376	IDOT DISTRICT ONE STANDARDS
377-527	CROSS SECTIONS
	IDOT HIGHWAY STANDARDS

⚠ 289-320
* 321-339A

⚠ *includes 325A.

FILE NAME : s:\p1\16288-6394\6346\023\mcoros\h\1\0160132-stds\indexofstandards.dgn

⚠ Rev. 9-10-12

 1170 SOUTH HOUBOLT ROAD JOLIET, ILLINOIS 60431 (815) 744-4200 ENGINEERS	USER NAME : amandaj	DESIGNED : MAG	REVISED : -	STATE OF ILLINOIS DEPARTMENT OF TRANSPORTATION	INDEX OF SHEETS & STANDARDS		F.A.P. RTE. : 349	SECTION : 11 WRS-3	COUNTY : KENDALL	TOTAL SHEETS : 527	SHEET NO. : 2		
	PLOT SCALE : 40,0000' / 1"	CHECKED : SJN	REVISED : -		SCALE: AS SHOWN	SHEET NO. 1 OF 2 SHEETS	STA. TO STA.	FED. ROAD DIST. NO. 1 (ILLINOIS) FED. AID PROJECT					
	PLOT DATE : 5/14/2012	DATE : -	REVISED : -										

CODE NO.	ITEM	UNIT	TOTAL QUANTITY	CONST. CODE											
				80% FED. 20% STATE	80% STATE 20% MONT-GOMERY	80% STATE 20% OSWEGO	80% FED. 20% STATE	80% FED. 10% STATE 5% MONT-GOMERY 5% OSWEGO TOWNSHIP	80% FED. 10% STATE 5% OSWEGO 5% MONT-GOMERY	80% FED. 10% STATE 5% OSWEGO 5% MONT-GOMERY	100% MONT-GOMERY	50% OSWEGO 50% MONT-GOMERY	80% FED. 20% STATE	80% FED. 20% STATE	100% OSWEGO
				ROADWAY	SIDEWALK	SIDEWALK	BRIDGE REPLACEMENT S. N. 047-0301	BRIARCLIFF	DOUGLAS	FIFTH	GOODWIN DR.	STREET LIGHTING	NOISE ABATEMENT WALLS	WATER MAIN	
				0003	0021	0021	0010	TRAFFIC SIGNALS - 0021			0021	0040	0043	0043	
				URBAN	URBAN	URBAN	URBAN	URBAN	URBAN	URBAN	URBAN	URBAN			
+ 21101645	TOPSOIL FURNISH AND PLACE, 12"	SO YD	4,690	4,690											
+ 21101695	TOPSOIL FURNISH AND PLACE, 30"	SO YD	16,451	16,451											
+ 21101805	COMPOST FURNISH AND PLACE, 2"	SO YD	412	412											
21301048	EXPLORATION TRENCH 48" DEPTH	FOOT	20	20											
+ 25000210	SEEDING, CLASS 2A	ACRE	18.5	18.5											
+ 25000310	SEEDING, CLASS 4	ACRE	2.25	2.25											
+ 25000314	SEEDING, CLASS 4B	ACRE	.75	.75											
+ 25000400	NITROGEN FERTILIZER NUTRIENT	POUND	1906	1906											
+ 25000600	POTASSIUM FERTILIZER NUTRIENT	POUND	1906	1906											
+ 25000750	MOWING	ACRE	17	17											
+ 25000775	SELECTIVE MOWING STAKES	EACH	8	8											
+ 25100115	MULCH, METHOD 2	ACRE	6.5	6.5											
+ 25100125	MULCH, METHOD 3	ACRE	15.5	15.5											
+ 25100630	EROSION CONTROL BLANKET	SO YD	108,620	108,620											

FILE NAME: S:\JULY08\308-6399\6346\23\N\cra\SA\101680132.dwg


+ SPECIALTY ITEM • 100% OSWEGO △ 100% STATE

Rev. 9-10-12 Rev.

 STRAND <small>AMERICAN CIVIL ENGINEERS</small>	1170 SOUTH HOUBOLT ROAD JOLIET, ILLINOIS 60431 (815) 744-4200	USER NAME: amandaj	DESIGNED -	REVISED -	STATE OF ILLINOIS DEPARTMENT OF TRANSPORTATION	SUMMARY OF QUANTITIES			F.A.P. RTE. 349	SECTION 11 WRS-3	COUNTY KENDALL	TOTAL SHEETS 527	SHEET NO. 6	
	PLOT SCALE = 28,000' / 1" =		CHECKED -	REVISED -		SCALE: AS SHOWN SHEET NO. OF SHEETS STA. TO STA.			FED. ROAD DIST. NO. ILLINOIS FED. AID PROJECT		CONTRACT NO. 60132			
	PLOT DATE = 5/14/2012		DATE -	REVISED -										

CODE NO.	ITEM	UNIT	TOTAL QUANTITY	CONST. CODE													
				80% FED. 20% STATE	80% STATE 20% MONT-GOMERY	80% STATE 20% OSWEGO	80% FED. 20% STATE	80% FED. 10% STATE 5% MONT-GOMERY 5% OSWEGO TOWNSHIP	80% FED. 10% STATE 5% OSWEGO 5% MONT-GOMERY	80% FED. 10% STATE 5% OSWEGO 5% MONT-GOMERY	100% MONT-GOMERY	50% OSWEGO 50% MONT-GOMERY	80% FED. 20% STATE	80% FED. 20% STATE	100% OSWEGO		
				ROADWAY	SIDEWALK	SIDEWALK	BRIDGE REPLACEMENT S. N. 047-0301	BRIARCLIFF	DOUGLAS	FIFTH	GOODWIN DR.	STREET LIGHTING	NOISE ABATEMENT WALLS	WATER MAIN			
				0003	0021	0021	0010	TRAFFIC SIGNALS - 0021			0021	0040	0043	0043			
URBAN	URBAN	URBAN	URBAN	URBAN	URBAN	URBAN	URBAN	URBAN	URBAN	URBAN	URBAN	URBAN					
A2005020	TREE, GYMNOCLADUS-DIOICUS (KENTUCKY COFFEETREE), 2 1/2" CALIPER, BALLED AND BURLAPPED	EACH	56	56													
+ A2005556	TREE, NYSSA SYLVATICA (BLACK TUPELO), 6' HEIGHT, CLUMP FORM, BALLED AND BURLAPPED	EACH	10	10													
+ A2006516	TREE, QUERCUS BICOLOR (SWAMP WHITE OAK), 2" CALIPER, BALLED AND BURLAPPED	EACH	3	3													
+ A2006616	TREE, QUERCUS IMBRICARIA (SHINGLE OAK), 2" CALIPER, BALLED AND BURLAPPED	EACH	13	13													
A2007616	TREE, TAXODIUM DISTICHUM (COMMON BALD CYPRESS), 2" CALIPER, BALLED AND BURLAPPED	EACH	21	21													
+ A2008468	TREE, ULMUS AMERICANA PRINCETON (PRINCETON AMERICAN ELM), 2" CALIPER, BALLED AND BURLAPPED	EACH	3	3													
+ B2001616	TREE, CRATAEGUS CRUSGALLI INERMIS (THORN LESS COCKSPUR HAWTHORN), 2" CALIPER, TREE FORM, BALLED AND BURLAPPED	EACH	31	31													
B2006316	TREE, SYRINGA RETICULATA IVORY SILK (IVORY SILK JAPANESE TREE LILAC), 2" CALIPER, TREE FORM, BALLED AND BURLAPPED	EACH	19	19													
+ B2013468	TREE, MALUS GOLDEN RAINDROPS (GOLDEN RAINDROPS CRABAPPLE), 2" CALIPER, TREE FORM, BALLED AND BURLAPPED	EACH	16	16													
C2005865	SHRUB, RHUS AROMATICA GRO LOW (GRO LOW FRAGRANT SUMAC), 5-GALLON	EACH	314	314													
+ C2012436	SHRUB, VIBURNUM LENTAGO (NANNYBERRY VIBURNUM), 3' HEIGHT, BALLED AND BURLAPPED	EACH	15	15													
+ C2C020G3	SHRUB, CORNUS STOLONIFERA (RED OSIER DOGWOOD), CONTAINER GROWN, 3-GALLON	EACH	20	20													
+ C2C09624	SHRUB, SAMBUCUS CANADENSIS (AMERICAN ELDER), 2' HEIGHT, CONTAINER	EACH	25	25													
+ E20210G1	VINE-PARTHENOCISSUS QUINOUEFOLIA ENGEL MANNII (ENGELMANNII VIRGINIA CREEPER), 1-GALLON POT	EACH	2,105	2,105													

+ SPECIALTY ITEM • 100% OSWEGO

 1170 SOUTH HOUBOLT ROAD JOLIET, ILLINOIS 60431 (815) 744-4200 ENGINEERS	USER NAME + amanda	DESIGNED -	REVISED -
	PLOT SCALE + 28.9800' / in.	DRAWN -	REVISED -
	PLOT DATE + 5/14/2012	CHECKED -	REVISED -
		DATE -	REVISED -

STATE OF ILLINOIS
DEPARTMENT OF TRANSPORTATION

SUMMARY OF QUANTITIES			
SCALE: AS SHOWN	SHEET NO.	OF SHEETS	STA. TO STA.

F.A.P. RTE.	SECTION	COUNTY	TOTAL SHEETS	SHEET NO.
349	11 WRS-3	KENDALL	527	27
FED. ROAD DIST. NO.			ILLINOIS FED. AID PROJECT	
			CONTRACT NO. 60132	

Rev. 9-10-12

FILE NAME + S:\JDL\6388-6399\6346\623\N\cor\SH\1\0168132-sh1-sec.dgn

CODE NO.	ITEM	UNIT	TOTAL QUANTITY	CONST. CODE											
				80% FED. 20% STATE	80% STATE 20% MONT-GOMERY	80% STATE 20% OSWEGO	80% FED. 20% STATE	80% FED. 10% STATE 5% MONT-GOMERY 5% OSWEGO TOWNSHIP	80% FED. 10% STATE 5% OSWEGO 5% MONT-GOMERY	80% FED. 10% STATE 5% OSWEGO 5% MONT-GOMERY	100% MONT-GOMERY	50% OSWEGO 50% MONT-GOMERY	80% FED. 20% STATE	80% FED. 20% STATE	100% OSWEGO
				ROADWAY	SIDEWALK	SIDEWALK	BRIDGE REPLACEMENT S. N.	BRIARCLIFF	DOUGLAS	FIFTH	GOODWIN DR.	STREET LIGHTING	NOISE ABATEMENT WALLS	WATER MAIN	
				0003	0021	0021	047-0301	TRAFFIC SIGNALS - 0021			0021	0040	0043	0043	
				URBAN	URBAN	URBAN	URBAN	URBAN	URBAN	URBAN	URBAN	URBAN			
K0012970	PERENNIAL PLANTS, BULB TYPE	UNIT	25.5	25.5											
K0012990	PERENNIAL PLANTS, ORNAMENTAL TYPE, GALLON POT	UNIT	22.64	22.64											
+ K0029634	WEED CONTROL, PRE-EMERGENT GRANULAR HERBICIDE	POUND	30	30											
+ X0301423	NOISE ABATEMENT WALL, GROUND MOUNTED	SO FT	171,237	171,237								171,237			
+ X0323003	TEMPORARY ELECTRIC SERVICE INSTALLATION	EACH	1									1			
+ X0324097	COARSE SAND PLACEMENT, 2"	SO YD	412	412											
X0326160	POROUS GRANULAR EMBANKMENT, SUBGRADE (SPECIAL)	CU YD	100										100		
X2070304	POROUS GRANULAR EMBANKMENT, SPECIAL	CU YD	432				432								
X2080250	TRENCH BACKFILL, SPECIAL	CU YD	20										20		
X4021000	TEMPORARY ACCESS (PRIVATE ENTRANCE)	EACH	3	3											
X4022000	TEMPORARY ACCESS (COMMERCIAL ENTRANCE)	EACH	4	4											
X4201000	HIGH-EARLY-STRENGTH PORTLAND CEMENT CONCRETE PAVEMENT 9 1/2" (JOINTED)	SO YD	1,739	1,739											
X4401198	HOT-MIX ASPHALT SURFACE REMOVAL, VARIABLE DEPTH	SO YD	285	285											
△ X5538000	STORM SEWERS TO BE CLEANED 18"	FOOT	222	222											

FILE NAME * S:\JUL162008-62991\6346\023\micr\os\sh\1\018012-sh1-rtd.dgn

+ SPECIALTY ITEM • 100% OSWEGO

△ 100% STATE

△ Rev. 9-10-12

Rev.


<p>1170 SOUTH HOUBOLT ROAD JOLIET, ILLINOIS 60431 18151 744-4200</p>	USER NAME = amandaj	DESIGNED -	REVISED -
	PLOT SCALE = 20.0000' = 1"	DRAWN -	REVISED -
	PLOT DATE = 5/14/2012	CHECKED -	REVISED -
		DATE -	REVISED -

STATE OF ILLINOIS
DEPARTMENT OF TRANSPORTATION

SUMMARY OF QUANTITIES

SCALE: AS SHOWN SHEET NO. OF SHEETS STA. TO STA.

F.A.P. RTE.	SECTION	COUNTY	TOTAL SHEETS	SHEET NO.
349	11 WRS-3	KENDALL	527	28
FED. ROAD DIST. NO.			ILLINOIS FED. AID PROJECT	
			CONTRACT NO. 60132	

CODE NO.	ITEM	UNIT	TOTAL QUANTITY	CONST. CODE											
				80% FED. 20% STATE	80% STATE 20% MONT-GOMERY	80% STATE 20% OSWEGO	80% FED. 20% STATE	80% FED. 10% STATE 5% MONT-GOMERY 5% OSWEGO TOWNSHIP	80% FED. 10% STATE 5% OSWEGO 5% MONT-GOMERY	80% FED. 10% STATE 5% OSWEGO 5% MONT-GOMERY	100% MONT-GOMERY	50% OSWEGO 50% MONT-GOMERY	80% FED. 20% STATE	80% FED. 20% STATE	100% OSWEGO
				ROADWAY	SIDEWALK	SIDEWALK	BRIDGE REPLACEMENT S. N. 047-0301	BRIARCLIFF	DOUGLAS	FIFTH	GOODWIN DR.	STREET LIGHTING	NOISE ABATEMENT WALLS	WATER MAIN	
				0003	0021	0021	0010	TRAFFIC SIGNALS - 0021			0021	0040	0043	0043	
				URBAN	URBAN	URBAN	URBAN	URBAN	URBAN	URBAN	URBAN	URBAN			
Δ X5538200	STORM SEWERS TO BE CLEANED 24"	FOOT	829	829											
X5610712	WATER MAIN REMOVAL, 12"	FOOT	225									225			
X5610716	WATER MAIN REMOVAL, 16"	FOOT	665									665			
X6020096	MANHOLES, TYPE A, 6' -DIAMETER, WITH 2 TYPE 1 FRAME, CLOSED LID, RESTRICTOR PLATE	EACH	8	8											
X6024240	INLETS, SPECIAL	EACH	1	1											
X6025600	MANHOLES TO BE ADJUSTED (SPECIAL)	EACH	6	6											
X6026622	VALVE VAULTS TO BE REMOVED	EACH	2									2			
X6061900	CONCRETE MEDIAN, TYPE SB-6.12 (SPECIAL)	SO FT	3,349	3,349											
X6700410	ENGINEER'S FIELD OFFICE, TYPE A (SPECIAL)	CAL MO	24	24											
X6700600	ENGINEER'S FIELD LABORATORY (SPECIAL)	CAL MO	24	24											
+ X7010216	TRAFFIC CONTROL AND PROTECTION, (SPECIAL)	L SUM	1	1											
+ 70103815	TRAFFIC CONTROL SURVEILLANCE 	CAL DA	687	687											
X7240500	RELOCATE EXISTING SIGNS	EACH	1	1											
+ X8100105	CONDUIT SPLICE	EACH	1						**						

FILE NAME = S:\JUL162008-6294\6294\023\KNC-08\SHK\01601122-akt.rwd

+ SPECIALTY ITEM • 100% OSWEGO Δ 100% STATE ** 80% FED./20% STATE



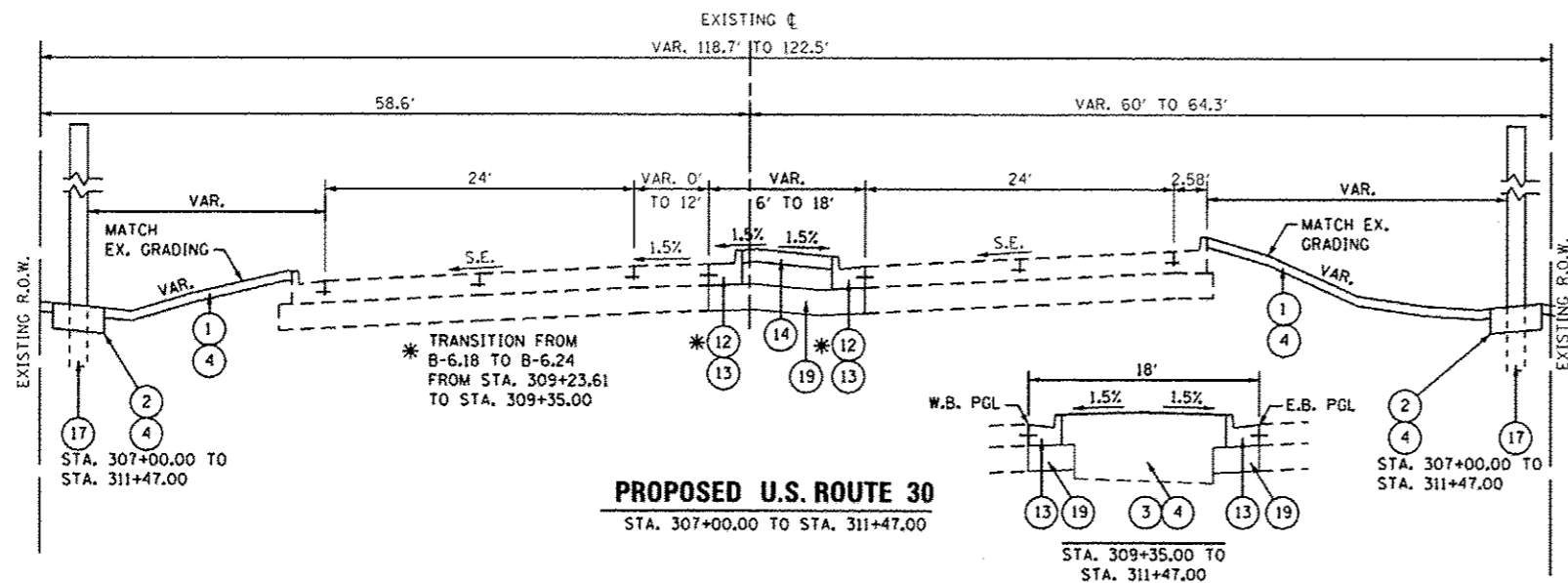
USER NAME: amanda	DESIGNED -	REVISED -
PLOT SCALE: 20.0000' / 1"	DRAWN -	REVISED -
PLOT DATE: 5/14/2012	CHECKED -	REVISED -
	DATE -	REVISED -

**STATE OF ILLINOIS
DEPARTMENT OF TRANSPORTATION**

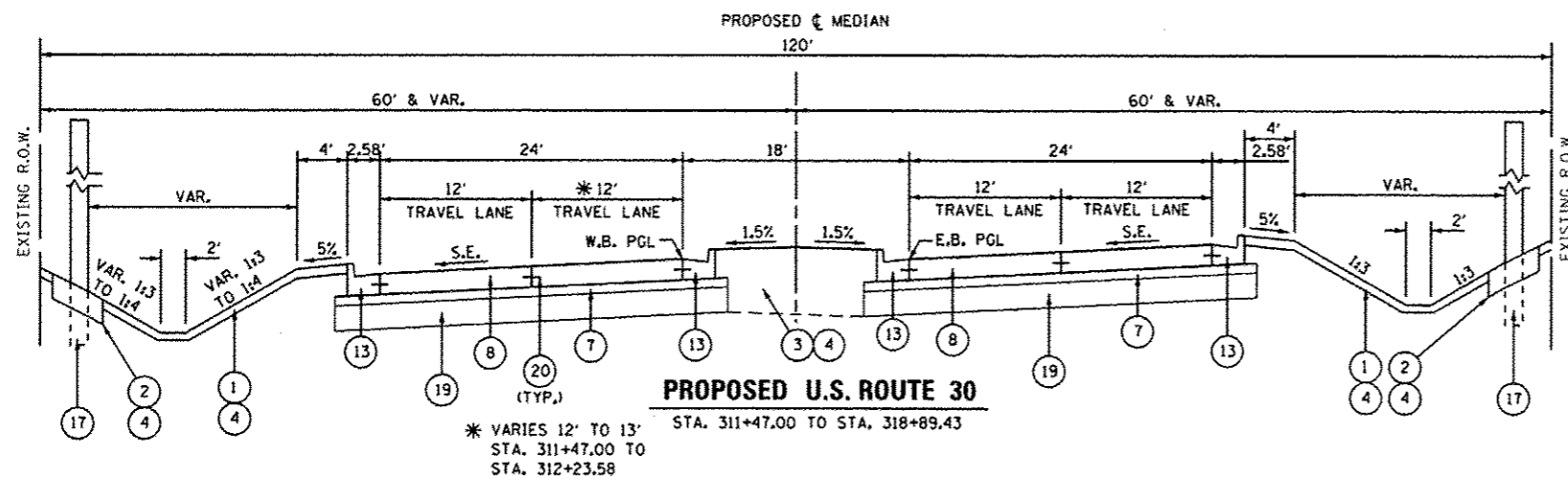
SUMMARY OF QUANTITIES			
SCALE: AS SHOWN	SHEET NO. OF SHEETS	STA. TO STA.	

F.A.P. RTE. 349	SECTION 11 WRS-3	COUNTY KENDALL	TOTAL SHEETS 527	SHEET NO. 29
FED. ROAD DIST. NO. ILLINOIS		FED. AID PROJECT CONTRACT NO. 60132		

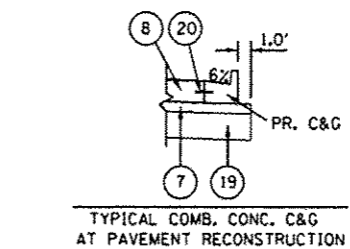
Δ Rev. 9-10-12 Rev.



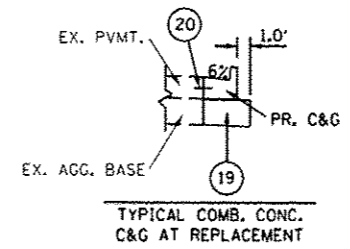
PROPOSED U.S. ROUTE 30
STA. 307+00.00 TO STA. 311+47.00



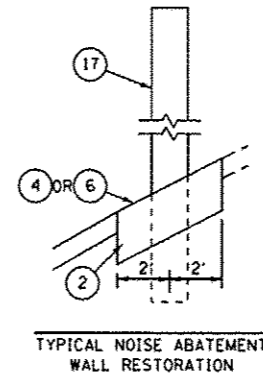
PROPOSED U.S. ROUTE 30
STA. 311+47.00 TO STA. 318+89.43



TYPICAL COMB. CONC. C&G AT PAVEMENT RECONSTRUCTION



TYPICAL COMB. CONC. C&G AT REPLACEMENT



TYPICAL NOISE ABATEMENT WALL RESTORATION

PROPOSED LEGEND

- 1 TOPSOIL PLACEMENT, 4"
- 2 TOPSOIL FURNISH AND PLACE, 12"
- 3 TOPSOIL FURNISH AND PLACE, 30"
- 4 SEEDING, CLASS 2A
- 5 SEEDING, CLASS 4
- 6 SODDING, SALT TOLERANT
- 7 STABILIZED SUBBASE - HOT-MIX ASPHALT, 4 1/2"
- 8 PORTLAND CEMENT CONCRETE PAVEMENT 9 1/2" (JOINTED)
- 9 PORTLAND CEMENT CONCRETE SIDEWALK 5"
- 10 HOT-MIX ASPHALT SHOULDERS, 6"
- 11 COMB. CONC. CURB & GUTTER, TYPE B-6.12
- 12 COMB. CONC. CURB & GUTTER, TYPE B-6.18
- 13 COMB. CONC. CURB & GUTTER, TYPE B-6.24
- 14 CONCRETE MEDIAN SURFACE, 6"
- 15 CONCRETE MEDIAN, TYPE SB-6.12
- 16 STEEL PLATE BEAM GUARDRAIL, TYPE A, 6 FOOT POSTS
- 17 NOISE ABATEMENT WALL, GROUND MOUNTED
- 18 CONCRETE MEDIAN, TYPE SB-6.12 (SPECIAL)
- 19 AGGREGATE SUBGRADE IMPROVEMENT, 12"
- 20 TIE BARS
- 21 BRIDGE APPROACH PAVEMENT CONNECTOR (PCC)
- 22 AGGREGATE SHOULDERS, TYPE B 10"
- 23 PORTLAND CEMENT CONCRETE SHOULDERS 9 1/2"
- 24 HIGH-EARLY-STRENGTH PORTLAND CEMENT CONCRETE PAVEMENT 9 1/2" (JOINTED)

IDOT DISTRICT ONE

HOT-MIX ASPHALT MIXTURE REQUIREMENTS

MIXTURE TYPE	AIR VOIDS @ NDES
STABILIZED SUBBASE	
STABILIZED SUBBASE-HOT-MIX ASPHALT, N50, (IL-19MM), 4 1/2"	3% @ 50 GYR
SHOULDER RECONSTRUCTION	
HOT-MIX ASPHALT SHOULDER, 6" (HMA BINDER IL-19MM)	4% @ 50 GYR
DRIVEWAYS AND FIELD ENTRANCE APRONS	
HOT-MIX ASPHALT SURFACE COURSE, MIX "D", N50, (IL-9.5MM); 2"	4% @ 50 GYR
HOT-MIX ASPHALT BASE COURSE, (HMA BINDER IL-19MM), 6" (FE AND PE) AND 8" (CE)	4% @ 50 GYR
PATCHING	
CLASS D PATCHES (HMA BINDER IL-19.0MM)	4% @ 70 GYR
TEMPORARY PAVEMENT, 10 1/4"	
HOT-MIX ASPHALT SURFACE COURSE, MIX "D", N50 (IL 9.5MM); 2"	4% @ 50 GYR
HOT-MIX ASPHALT BINDER COURSE, IL-19MM, 8.25"	4% @ 50 GYR
TEMPORARY RAMPS	
HOT-MIX ASPHALT SURFACE COURSE, MIX "D", N50 (IL 9.5MM)/ VARIABLE DEPTH	4% @ 50 GYR

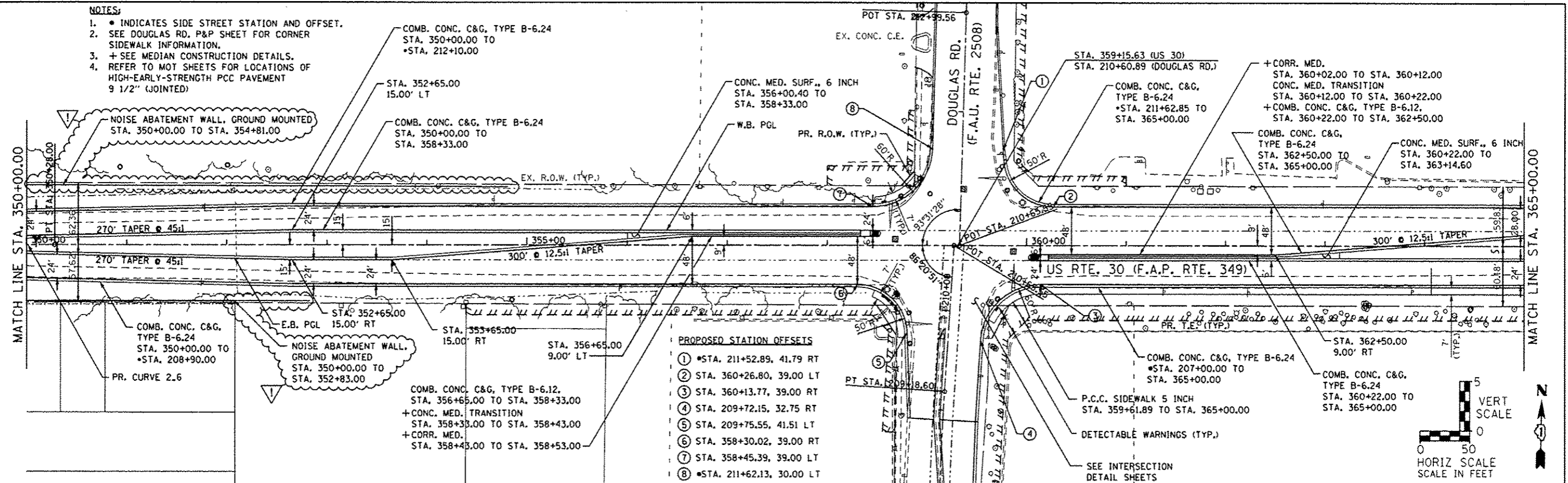
STRUCTURAL DESIGN TRAFFIC: 35,214 YEAR: 2030
 PV = 33,524 SU = 810 MU = 880
 ROAD/STREET CLASSIFICATION: CLASS I
 PERCENT OF STRUCTURAL DESIGN TRAFFIC IN DESIGN LANE:
 P = 95.2% S = 2.3% M = 2.5%
 TRAFFIC FACTOR: ACTUAL TF = 9.9 AC TYPE = N/A
 MINIMUM TF = 9.04
 PG GRADE: N/A BINDER = N/A SURFACE = N/A
 SUBGRADE SUPPORT RATING:
 SSR = POOR

NOTES:
 THE UNIT WEIGHT USED TO CALCULATE HOT-MIX ASPHALT MIXTURES IS 112 LBS/SO YD/IN
 NON-POLYMERIZED HMA THE "AC TYPE" SHALL BE "PG 64-22" UNLESS MODIFIED BY DISTRICT 1 SPECIAL PROVISIONS FOR "PERCENT OF RAP" SEE DISTRICT 1 SPECIAL PROVISIONS. FOR "PERCENT OF RAP" SEE SPECIAL PROVISIONS.
 CONTRACTOR SHALL MILL BEFORE PATCHING.
 IF THE CONTRACTOR CHOOSES TO USE PC TEMPORARY PAVEMENT, THE THICKNESS WILL BE PORTLAND CEMENT CONCRETE PAVEMENT 8-1/4" (JOINTED).
 PC CONCRETE TEMPORARY PAVEMENT SHALL CONSIST OF CLASS PV CONCRETE MEETING THE REQUIREMENTS OF ART. 1020 OF THE STANDARD SPECIFICATIONS, 8-1/4" THICK. TEMPORARY PCC PAVEMENT DOES NOT REQUIRE DOWEL BARS.

FILE NAME: S:\JUL\6382-6394\6346\623\Wdr\ex\CAD\Sheet\0188132-1-1-typical.dgn

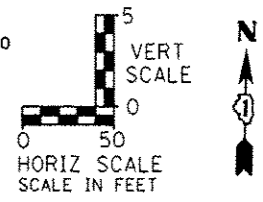
NOTES:

- INDICATES SIDE STREET STATION AND OFFSET.
- SEE DOUGLAS RD. P&P SHEET FOR CORNER SIDEWALK INFORMATION.
- + SEE MEDIAN CONSTRUCTION DETAILS.
- REFER TO MOT SHEETS FOR LOCATIONS OF HIGH-EARLY-STRENGTH PCC PAVEMENT 9 1/2" (JOINTED)



PROPOSED STATION OFFSETS

1	*STA. 211+52.89, 41.79 RT
2	STA. 360+26.80, 39.00 LT
3	STA. 360+13.77, 39.00 RT
4	STA. 209+72.15, 32.75 RT
5	STA. 209+75.55, 41.51 LT
6	STA. 358+30.02, 39.00 RT
7	STA. 358+45.39, 39.00 LT
8	*STA. 211+62.13, 30.00 LT

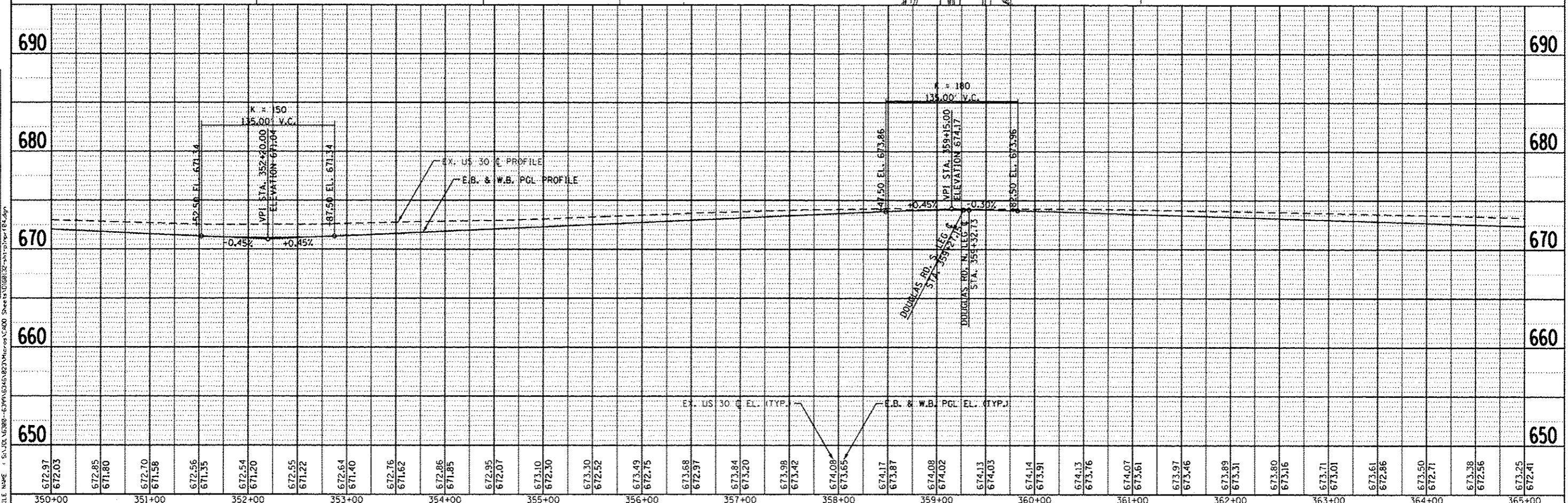


PLAN

DATE	
BY	
DESIGNED	
CHECKED	
DRAWN	
NOTED	
NO.	

PROFILE

DATE	
BY	
DESIGNED	
CHECKED	
DRAWN	
NOTED	
NO.	



350+00	351+00	352+00	353+00	354+00	355+00	356+00	357+00	358+00	359+00	360+00	361+00	362+00	363+00	364+00	365+00																																														
672.97	672.03	672.85	671.80	672.70	671.58	672.56	671.35	672.54	671.20	672.55	671.22	672.64	671.40	672.76	671.62	672.86	671.85	672.95	672.07	673.10	672.30	673.30	672.52	673.49	672.75	673.68	672.97	673.84	673.20	673.98	673.42	674.08	673.85	674.17	673.87	674.08	674.02	674.13	674.03	674.14	673.91	674.13	673.76	674.07	673.61	673.97	673.46	673.89	673.31	673.80	673.16	673.71	673.01	673.61	672.86	673.50	672.71	673.38	672.56	673.25	672.41

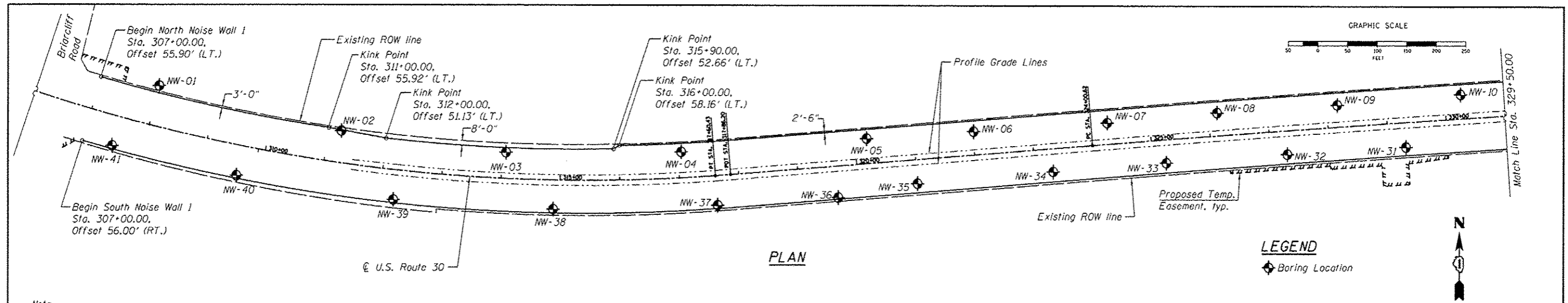
1170 SOUTH HOUBOLT ROAD
JOLIET, ILLINOIS 60431
(815) 744-4200

USER NAME	denise	DESIGNED	MAG	REVISED	9-6-12
CHECKED	SJN	REVISED			
DRAWN	BJF	REVISED			
CHECKED		REVISED			

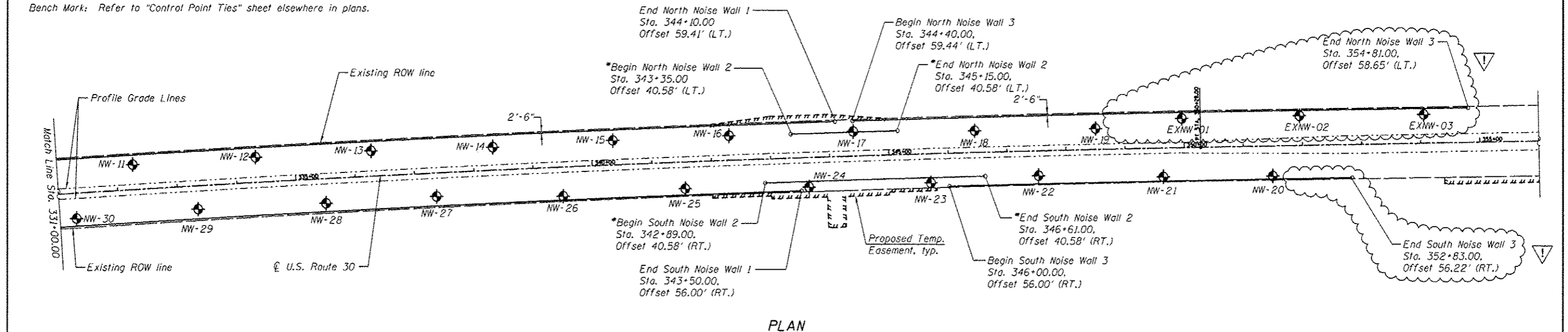
STATE OF ILLINOIS
DEPARTMENT OF TRANSPORTATION

PLAN AND PROFILE
SCALE: AS SHOWN SHEET NO. OF SHEETS STA. 350+00 TO STA. 365+00

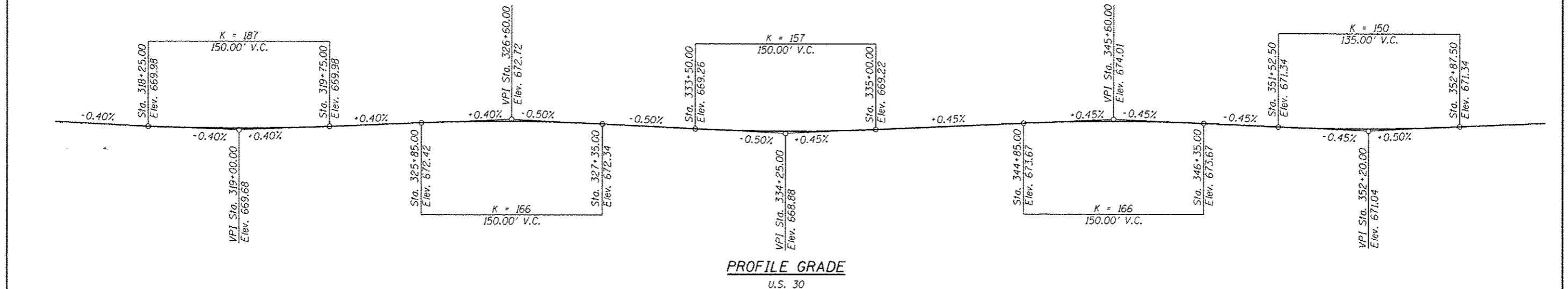
F.A.P. RTE.	SECTION	COUNTY	TOTAL SHEETS	SHEET NO.
349	11 WRS-3	KENDALL	527	80
CONTRACT NO. 60132				FED. ROAD DIST. NO. 1 (ILLINOIS) FED. AID PROJECT



Note:
 Offsets are measured radially where applicable, from
 U.S. Route 30 and are measured to centerline of wall.
 Bench Mark: Refer to "Control Point Ties" sheet elsewhere in plans.



*Space posts to miss proposed culvert end sections.



	USER NAME :	DESIGNED - ADB	REVISED - 9-6-12	STATE OF ILLINOIS DEPARTMENT OF TRANSPORTATION	GENERAL PLAN NOISE ABATEMENT WALLS		F.A.P. RTE.:	SECTION:	COUNTY:	TOTAL SHEETS:	SHEET NO.:
	FILE NAME :	CHECKED - MTH	REVISED -		349	11 WRS-3	KENDALL	527	321		
	PLOT SCALE :	DRAWN - AJF	REVISED -		CONTRACT NO. 60132						
	PLOT DATE :	CHECKED - MTH	REVISED -		SHEET NO. 51 OF 519 SHEETS			ILLINOIS FED. AID PROJECT			

GENERAL NOTES

4" ϕ drainage holes shall be field drilled through the wall panels as required to facilitate surface drainage with a maximum of one hole per panel. Location to be determined in the field by the Engineer. Cost included with Noise Abatement Wall, Ground Mounted.

The Noise Abatement Walls shall have an absorptive panel system on the roadway side and either absorptive or reflective on the residential side, unless noted otherwise. See Special Provision for additional details.

All reinforcement including the welded wire fabric shall be Epoxy Coated. Welded wire fabric shall be according to AASHTO M 55.

The Contractor shall verify and consider the location of existing and proposed drainage structures, overhead and underground utilities prior to wall construction. Any damage to utilities to be repaired at the Contractor's expense.

Type, size and spacing of posts, noise wall panels, drilled shaft size and embedment length, reinforcement details, lifting bars and wall limits including top and bottom of wall shall be determined by Contractor. Cost included with Noise Abatement Wall, Ground Mounted.

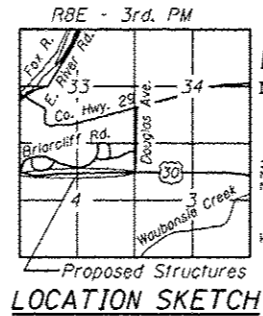
TOTAL BILL OF MATERIAL

ITEM	UNIT	TOTAL
Noise Abatement Wall, Ground Mounted	Sq. Ft.	171,237

CURVE DATA

(US Route 30)

(Proposed Curve 2_1)	(Proposed Curve 2_6)
$\Delta = 38^{\circ}25'19''$ (LT)	$\Delta = 3^{\circ}30'11''$ (RT)
$D = 1^{\circ}57'19''$	$D = 0^{\circ}08'00''$
$T = 1,021.02'$	$T = 1,314.10'$
$L = 1,964.94'$	$L = 2,627.38'$
$E = 172.79'$	$E = 20.09'$
$R = 2,930.17'$	$R = 42,972.95'$
P.C. = Sta. 297+95.49	P.C. = Sta. 324+00.62
P.T. = Sta. 317+60.43	P.T. = Sta. 350+28.00
P.I. = Sta. 308+16.51	P.I. = Sta. 337+14.72



LOADING

Wind on Ground Mounted Noise Wall = 25 psf

DESIGN SPECIFICATIONS

2002 AASHTO Standard Specifications for Highway Bridges
1989 Guide Specifications for Structural Design of Sound Barriers with Interims

DESIGN STRESSES

FIELD UNITS

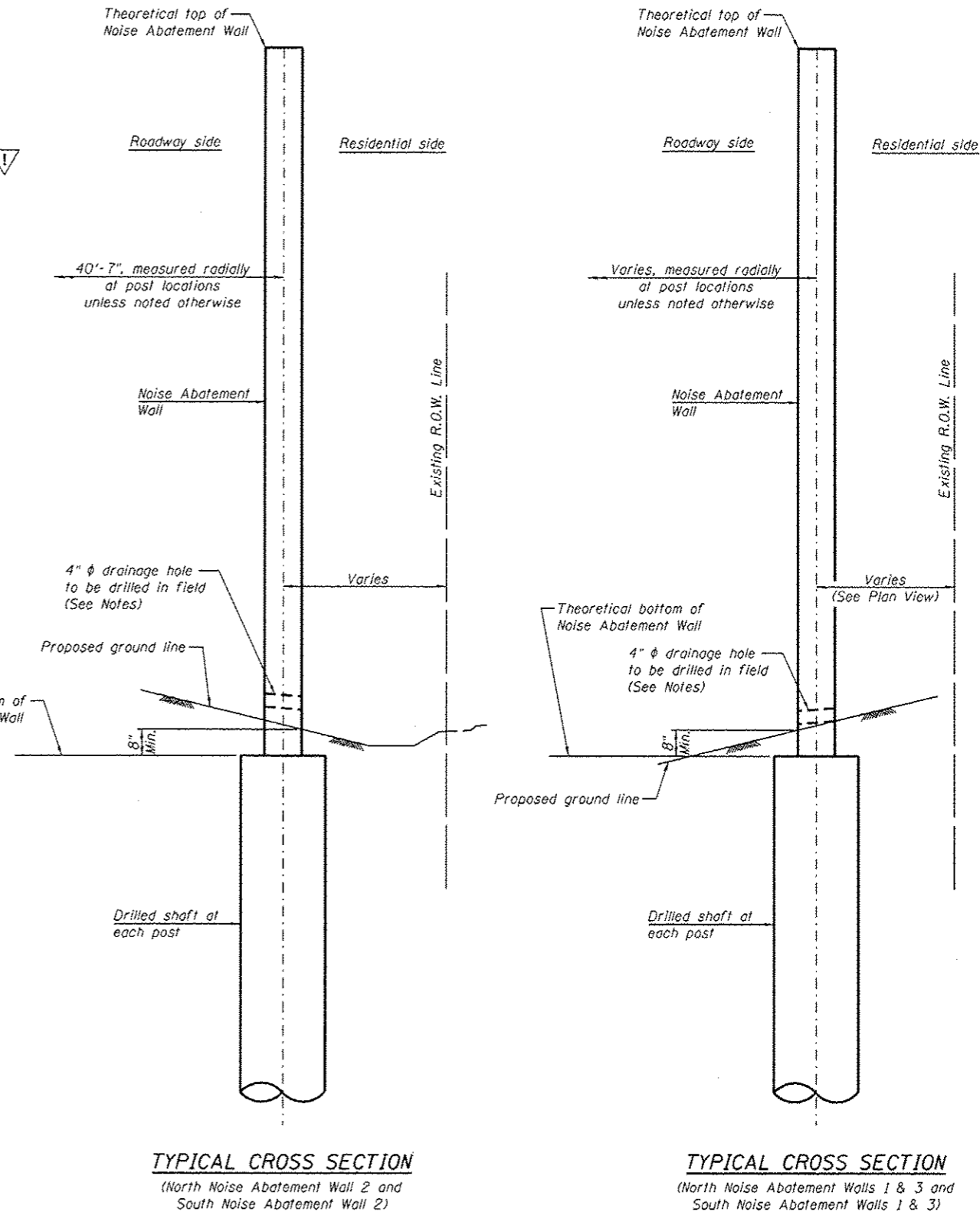
$f'_c = 3,500$ psi
 $f_y = 60,000$ psi (Reinforcement)
 $f_y = 36,000$ psi (Struct. Steel, M270 Grade 50)

PRECAST UNITS

$f'_c = 4,500$ psi
 $f_y = 60,000$ psi (Reinforcement)
 $f_y = 65,000$ psi (Welded Wire Fabric)

INDEX OF SHEETS

- S1. General Plan
- S2. Details
- S3. North Noise Abatement Wall 1
- S4. South Noise Abatement Wall 1
- S5. North and South Noise Abatement Walls 2 & 3
- S6-S19. Boring Logs

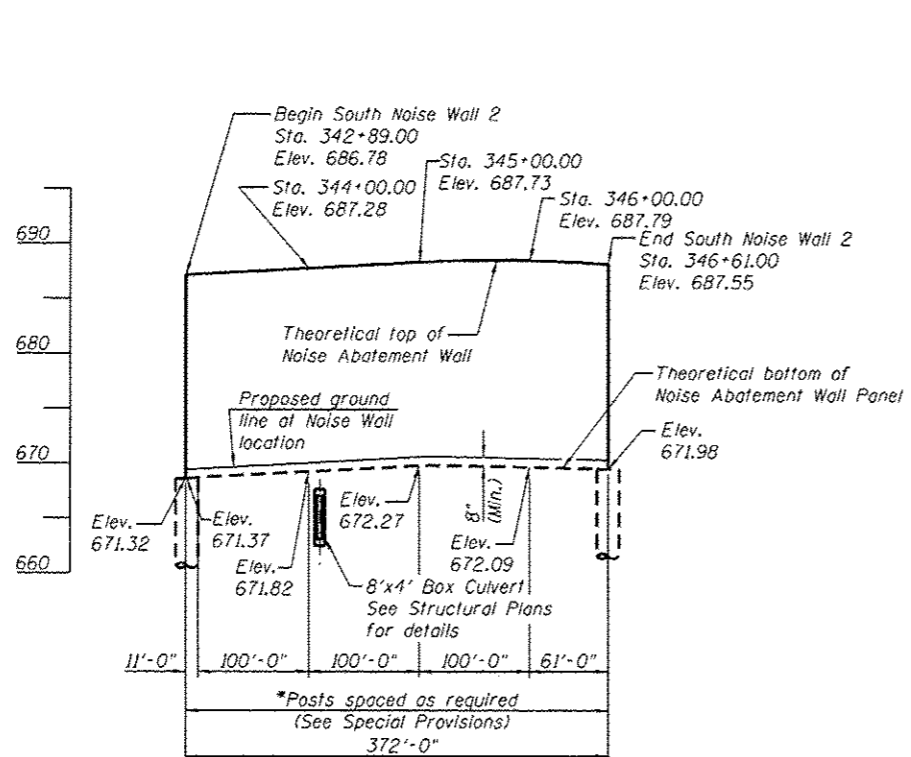


USER NAME :	DESIGNED - ADB	REVISED - 9-6-12
FILE NAME :	CHECKED - MTH	REVISED -
PLOT SCALE :	DRAWN - AJF	REVISED -
PLOT DATE :	CHECKED - MTH	REVISED -

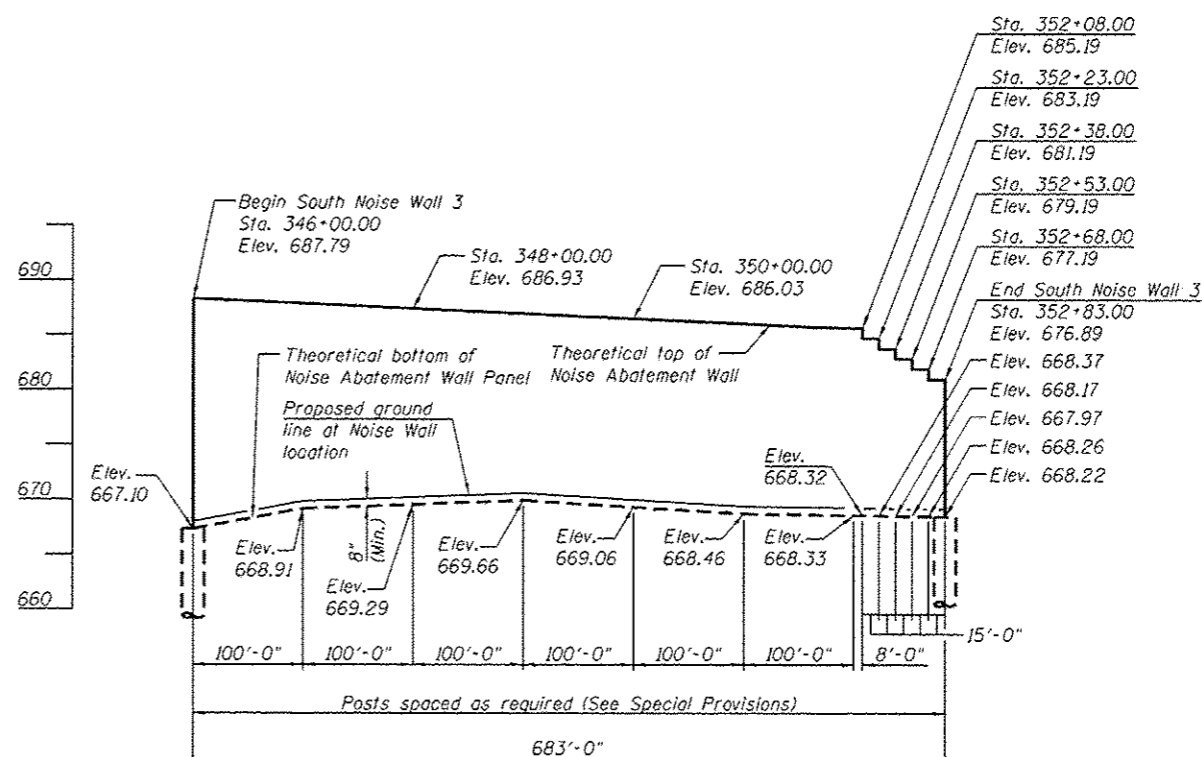
**STATE OF ILLINOIS
DEPARTMENT OF TRANSPORTATION**

**DETAILS
NOISE ABATEMENT WALLS**
SHEET NO. 52 OF 519 SHEETS

F.A.P. RTE.	SECTION	COUNTY	TOTAL SHEETS	SHEET NO.
349	11 WRS-3	KENDALL	527	322
CONTRACT NO. 60132				
ILLINOIS FED. AID PROJECT				



SOUTH NOISE ABATEMENT WALL 2 ELEVATION
(Looking North)

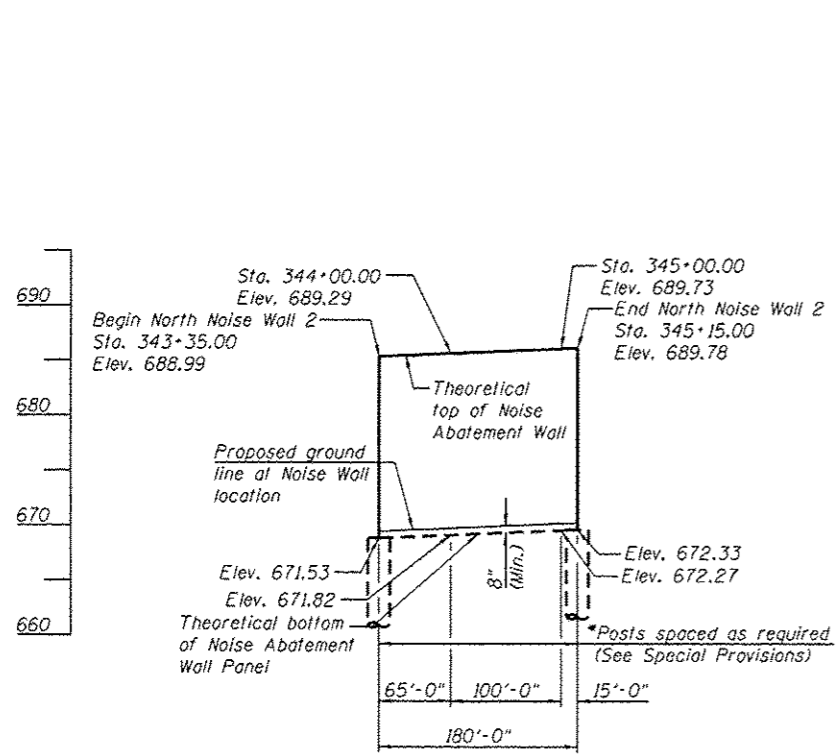


SOUTH NOISE ABATEMENT WALL 3 ELEVATION
(Looking North)

*Space posts to miss proposed culvert end sections.

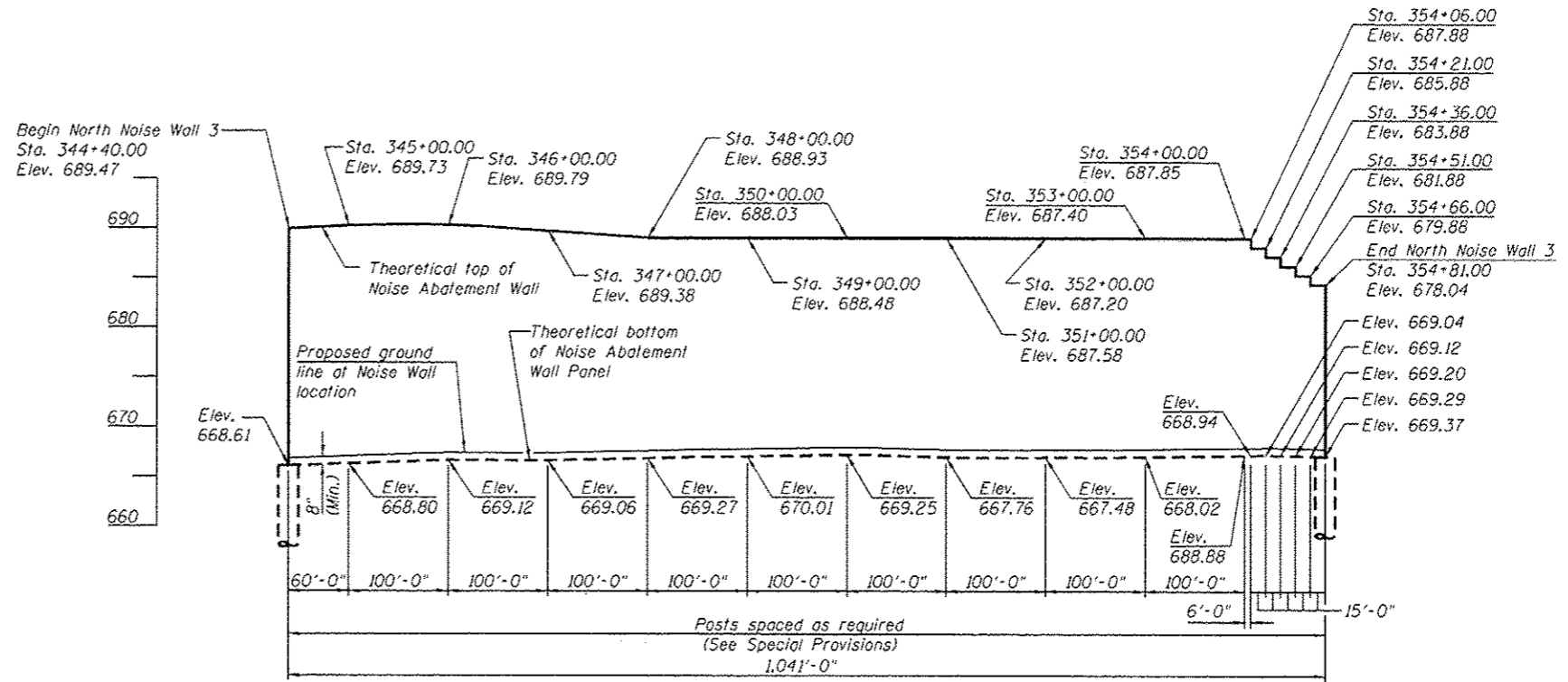
South Wall 2				
Station	Offset Right	Theoretical Top of wall	Theoretical Bottom of wall	Proposed Grade Elev. At front face
342+89	40.58	686.78	671.32	671.99
343+00	40.58	686.83	671.37	672.04
344+00	40.58	687.28	671.82	672.48
345+00	40.58	687.73	672.27	672.93
346+00	40.58	687.79	672.09	672.76
346+61	40.58	687.55	671.98	672.65

South Wall 3				
Station	Offset Right	Theoretical Top of wall	Theoretical Bottom of wall	Proposed Grade Elev. At front face
346+00	56.00	687.79	667.10	667.77
347+00	56.00	687.38	668.91	669.58
348+00	56.00	686.93	669.29	669.96
349+00	56.00	686.48	669.66	670.33
350+00	56.00	686.03	669.06	669.73
351+00	56.00	685.58	668.46	669.13
352+00	56.00	685.20	668.33	669.00
352+08	56.00	685.19	668.32	668.99
352+23	56.04	683.19	668.37	669.04
352+38	56.09	681.19	668.17	668.84
352+53	56.13	679.19	667.97	668.64
352+68	56.17	677.19	668.26	668.93
352+83	56.22	676.89	668.22	668.89



NORTH NOISE ABATEMENT WALL 2 ELEVATION
(Looking North)

North Wall 2				
Station	Offset Left	Theoretical Top of wall	Theoretical Bottom of wall	Proposed Grade Elev. At front face
343+35	40.58	688.99	671.53	672.20
344+00	40.58	689.29	671.82	672.49
345+00	40.58	689.73	672.27	672.93
345+15	40.58	689.78	672.33	673.00



NORTH NOISE ABATEMENT WALL 3 ELEVATION
(Looking North)

North Wall 3				
Station	Offset Left	Theoretical Top of wall	Theoretical Bottom of wall	Proposed Grade Elev. At front face
344+40	59.44	689.47	668.61	669.27
345+00	59.51	689.73	668.80	669.47
346+00	59.60	689.79	669.12	669.78
347+00	59.69	689.38	669.06	669.73
348+00	59.78	688.93	669.27	669.94
349+00	59.85	688.48	670.01	670.68
350+00	59.93	688.03	669.25	669.92
351+00	59.74	687.58	667.76	668.43
352+00	59.45	687.20	667.48	668.15
353+00	59.17	687.40	668.02	668.69
354+00	58.88	687.85	668.88	669.55
354+06	58.88	687.88	668.94	669.61
354+21	58.82	685.88	669.04	669.71
354+36	58.78	683.88	669.12	669.79
354+51	58.73	681.88	669.20	669.87
354+66	58.73	679.88	669.29	669.96
354+81	58.65	678.04	669.37	670.04



USER NAME :	DESIGNED - ADB	REVISED - 9-6-12
FILE NAME :	CHECKED - MTH	REVISED -
PLOT SCALE :	DRAWN - AJF	REVISED -
PLOT DATE :	CHECKED - MTH	REVISED -

STATE OF ILLINOIS
DEPARTMENT OF TRANSPORTATION

ELEVATION VIEW
NORTH NOISE ABATEMENT WALLS 2 & 3

SHEET NO. 55 OF 519 SHEETS

F.A.P. RTE. :	SECTION :	COUNTY :	TOTAL SHEETS :	SHEET NO. :
349	11 WRS-3	KENDALL	527	3250
CONTRACT NO. 60132			ILLINOIS FED. AID PROJECT	

Wang Engineering
wangeng@wangeng.com
1145 N Main Street
Lombard, IL 60148
Telephone: 630 953-9928
Fax: 630 953-9938

BORING LOG EXNW-01 Page 1 of 1

WEI Job No.: 195-05-01
Client: Strand Associates, Inc.
Project: US Route 30 from Briardriff Road to US Route 34
Location: Kendall County, IL

Date: NOV02
Elevation: 671.60 ft
North: 1840203.74 ft
East: 987094.52 ft
Station: 348+96.76
Offset: 32.86 LT

Profile Elevation (ft)	SOIL AND ROCK DESCRIPTION	Depth (ft)	Sample No.	SPT Value (blows/ft)	Cu (ksi)	Mohr's Constant (%)	Profile Elevation (ft)	SOIL AND ROCK DESCRIPTION	Depth (ft)	Sample No.	SPT Value (blows/ft)	Cu (ksi)	Mohr's Constant (%)
681.5	Loose, brown SANDY LOAM and gravel --FILL--	1	5 4	NP	11		681.5						
681.1	Stiff to very stiff, black, brown, and gray SILTY CLAY trace to little gravel --FILL--	2	3 4 4	2.00	29		681.1						
680.8		3	4 4 4	1.31	27		680.8						
680.4	Black, brown, and gray SILTY CLAY little gravel and sand seams --BURIED TOPSOIL--	4	2 3 4	1.64	22		680.4						
680.1	Stiff, brown to gray SILTY CLAY Probably water-bearing SAND bed Stiff to very stiff, brown to gray SILTY CLAY trace gravel	5	4 4 4	3.20	21		680.1						
		6	4 4 7	3.36	22								
		7	3 4 5	1.15	27								
		8	4 4 7	2.21	23								
	Boring terminated at 20.00 ft.	20											

GENERAL NOTES		WATER LEVEL DATA	
Begin Drilling: 09-05-2012	Complete Drilling: 09-05-2012	While Drilling: <input checked="" type="checkbox"/>	10.50 ft
Drilling Contractor: WTS	Drill Rig: Dieckrich D-50	At Completion of Drilling: <input checked="" type="checkbox"/>	18.00 ft
Driller: RAJ	Logger: N. Boddy	Time After Drilling: NA	
Checked by: E. Datz		Depth to Water: NA	
Drilling Method: 2.25" SSA; Boring backfilled upon completion.		The stratification lines represent the approximate boundary between soil types. The actual transition may be gradual.	

Wang Engineering
wangeng@wangeng.com
1145 N Main Street
Lombard, IL 60148
Telephone: 630 953-9928
Fax: 630 953-9938

BORING LOG EXNW-02 Page 1 of 1

WEI Job No.: 195-05-01
Client: Strand Associates, Inc.
Project: US Route 30 from Briardriff Road to US Route 34
Location: Kendall County, IL

Date: NOV02
Elevation: 671.10 ft
North: 1840203.32 ft
East: 987293.62 ft
Station: 351+96.08
Offset: 34.94 LT

Profile Elevation (ft)	SOIL AND ROCK DESCRIPTION	Depth (ft)	Sample No.	SPT Value (blows/ft)	Cu (ksi)	Mohr's Constant (%)	Profile Elevation (ft)	SOIL AND ROCK DESCRIPTION	Depth (ft)	Sample No.	SPT Value (blows/ft)	Cu (ksi)	Mohr's Constant (%)
681.5	7/8 inch thick SANDY LOAM and GRAVEL --FILL--	1	4	3.00	20		681.5						
681.1	Very stiff, black, brown, and gray SILTY CLAY some gravel --FILL--	2	4 5	NP	16		681.1						
680.8	Loose, brown SANDY LOAM and gravel --FILL--	3	3 3 11	0.90	24		680.8						
680.4	Medium stiff, black, brown, and gray SILTY CLAY little gravel --FILL--	4	4 7 10	4.18	13		680.4						
680.1	Black, brown, and gray SILTY CLAY little gravel and sand seams --BURIED TOPSOIL--	5	7 10 13	3.61	23		680.1						
	Hard, brown to gray SILTY CLAY Probably water-bearing SAND bed Stiff to hard, brown to gray SILTY CLAY trace gravel	6	4 4 8	3.69	25								
		7	3 4 5	1.80	27								
		8	4 4 8	2.38	28								
	Boring terminated at 20.00 ft.	20											

GENERAL NOTES		WATER LEVEL DATA	
Begin Drilling: 09-05-2012	Complete Drilling: 09-05-2012	While Drilling: <input checked="" type="checkbox"/>	10.50 ft
Drilling Contractor: WTS	Drill Rig: Dieckrich D-50	At Completion of Drilling: <input checked="" type="checkbox"/>	18.00 ft
Driller: RAJ	Logger: N. Boddy	Time After Drilling: NA	
Checked by: E. Datz		Depth to Water: NA	
Drilling Method: 2.25" SSA; Boring backfilled upon completion.		The stratification lines represent the approximate boundary between soil types. The actual transition may be gradual.	

Wang Engineering
wangeng@wangeng.com
1145 N Main Street
Lombard, IL 60148
Telephone: 630 953-9928
Fax: 630 953-9938

BORING LOG EXNW-03 Page 1 of 1

WEI Job No.: 195-05-01
Client: Strand Associates, Inc.
Project: US Route 30 from Briardriff Road to US Route 34
Location: Kendall County, IL

Date: NOV02
Elevation: 671.30 ft
North: 1840297.27 ft
East: 987493.93 ft
Station: 353+96.15
Offset: 37.42 LT

Profile Elevation (ft)	SOIL AND ROCK DESCRIPTION	Depth (ft)	Sample No.	SPT Value (blows/ft)	Cu (ksi)	Mohr's Constant (%)	Profile Elevation (ft)	SOIL AND ROCK DESCRIPTION	Depth (ft)	Sample No.	SPT Value (blows/ft)	Cu (ksi)	Mohr's Constant (%)
681.5	Loose, brown SANDY LOAM and gravel --FILL--	1	4	4.50	16		681.5						
681.1	Stiff to hard, black, brown, and gray SILTY CLAY trace to little gravel --FILL--	2	2 4 5	2.75	14		681.1						
680.8		3	3 3 5	1.31	28		680.8						
680.4	Very stiff, brown to gray SILTY CLAY trace gravel	4	4 5 5	3.61	23		680.4						
		5	5 5 6	3.85	23								
		6	4 4 6	2.62	23								
		7	3 4 5	2.05	26								
		8	4 4 5	2.05	26								
	Boring terminated at 20.00 ft.	20											

GENERAL NOTES		WATER LEVEL DATA	
Begin Drilling: 09-05-2012	Complete Drilling: 09-05-2012	While Drilling: <input checked="" type="checkbox"/>	DRY
Drilling Contractor: WTS	Drill Rig: Dieckrich D-50	At Completion of Drilling: <input checked="" type="checkbox"/>	DRY
Driller: RAJ	Logger: N. Boddy	Time After Drilling: NA	
Checked by: E. Datz		Depth to Water: NA	
Drilling Method: 2.25" SSA; Boring backfilled upon completion.		The stratification lines represent the approximate boundary between soil types. The actual transition may be gradual.	

(Sheet 14 of 140)



USER NAME :	DESIGNED - ADB	REVISED - 9-6-12
FILE NAME :	CHECKED - MTH	REVISED -
PLOT SCALE :	DRAWN - AJF	REVISED -
PLOT DATE :	CHECKED - MTH	REVISED -

STATE OF ILLINOIS
DEPARTMENT OF TRANSPORTATION

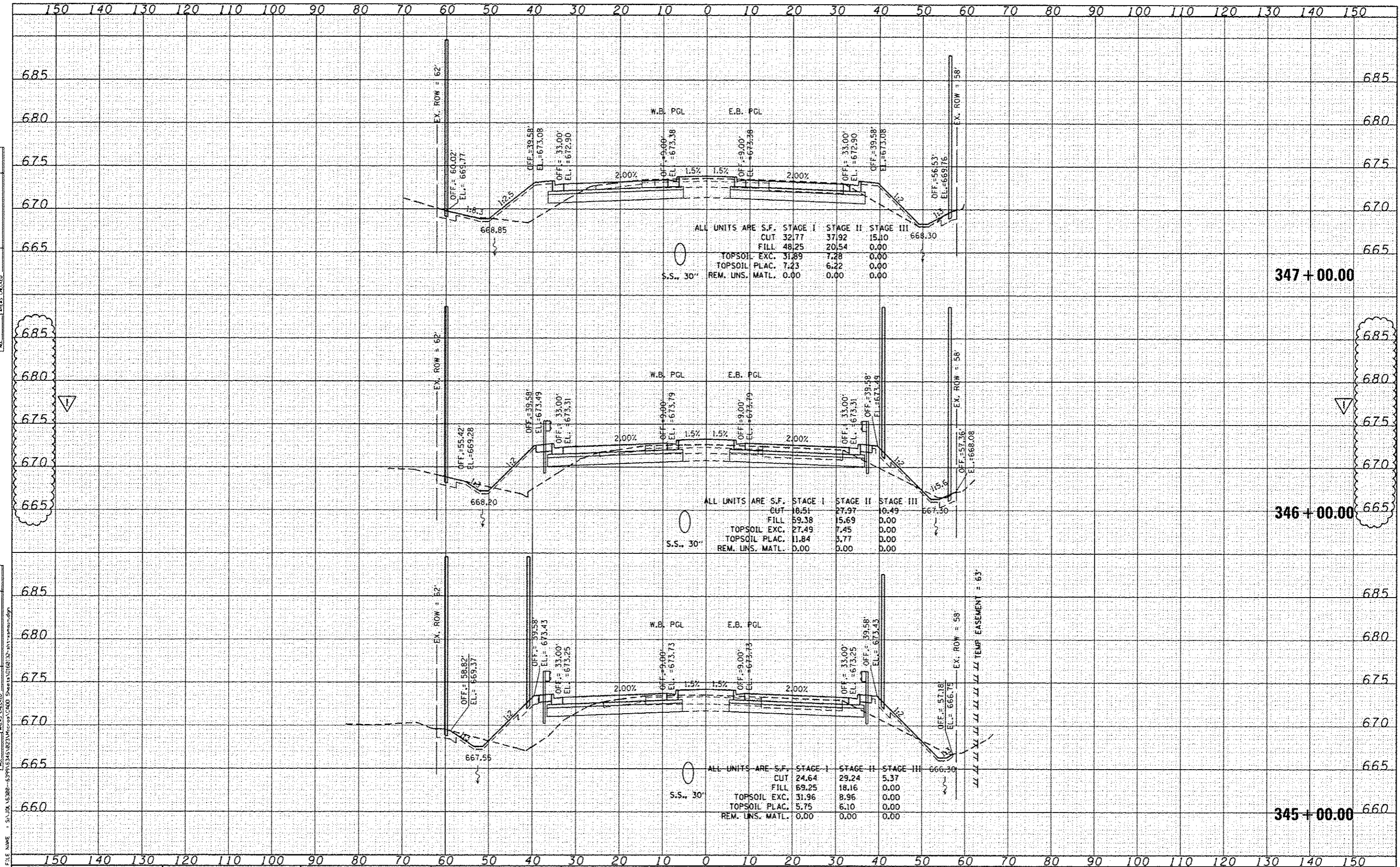
BORING LOGS
NOISE ABATEMENT WALL

SHEET NO. 519 OF 519 SHEETS

F.A.P. RTE.	SECTION	COUNTY	TOTAL SHEETS	SHEET NO.
349	11 WRS-3	KENDALL	527	339a
CONTRACT NO. 60132			ILLINOIS FED. AID PROJECT	

DATE	
BT	
SAVED	
PRINTED	
TEMPLATE	
NOTE BOOK	
AREAS CHECKED	
NO.	

DATE	
BT	
SAVED	
PRINTED	
TEMPLATE	
NOTE BOOK	
AREAS CHECKED	
NO.	



1170 SOUTH HOUBOLT ROAD
JOLIET, ILLINOIS 60431
STRAND ASSOCIATES (815) 744-4200

USER NAME	demiss
DESIGNED	MAG
DRAWN	AJJ
CHECKED	BMA
DATE	4/25/2012

REVISED	9-6-12
REVISED	
REVISED	
REVISED	

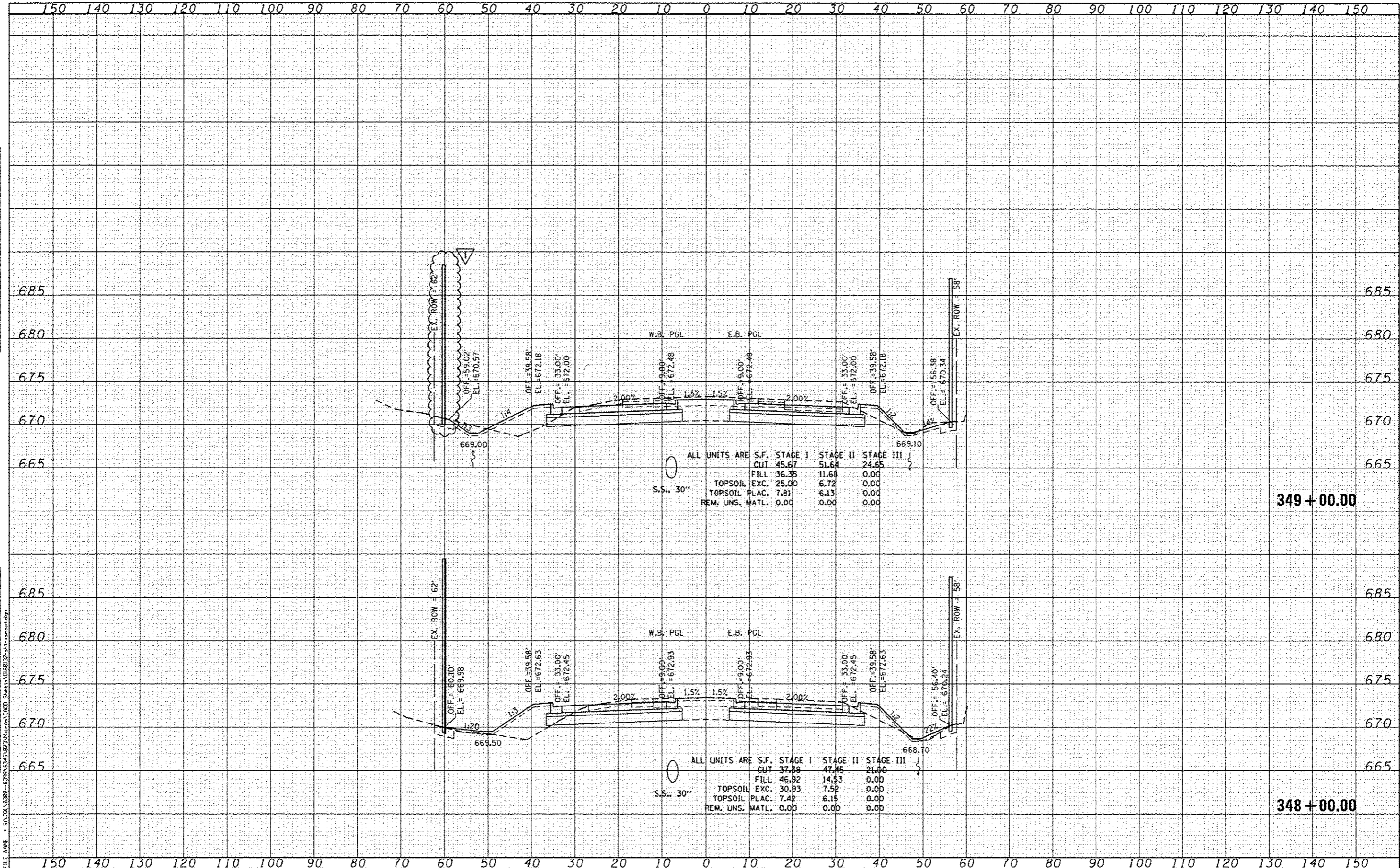
STATE OF ILLINOIS
DEPARTMENT OF TRANSPORTATION

US 30 CROSS SECTIONS
SCALE: SHEET OF SHEETS STA. 345+00.00 TO STA. 347+00.00

F.A.P. RTE.	SECTION	COUNTY	TOTAL SHEETS	SHEET NO.
349	11 WRS-3	KENDALL	527	456
CONTRACT NO. 60132				
FED. ROAD DIST. NO. 1 ILLINOIS FED. AID PROJECT				

DATE	
BY	
FINISHED	
SURVEY	
NOTED	
BOOK	
AREAS	
CREATED	

DATE	
BY	
FINISHED	
SURVEY	
NOTED	
BOOK	
AREAS	
CREATED	



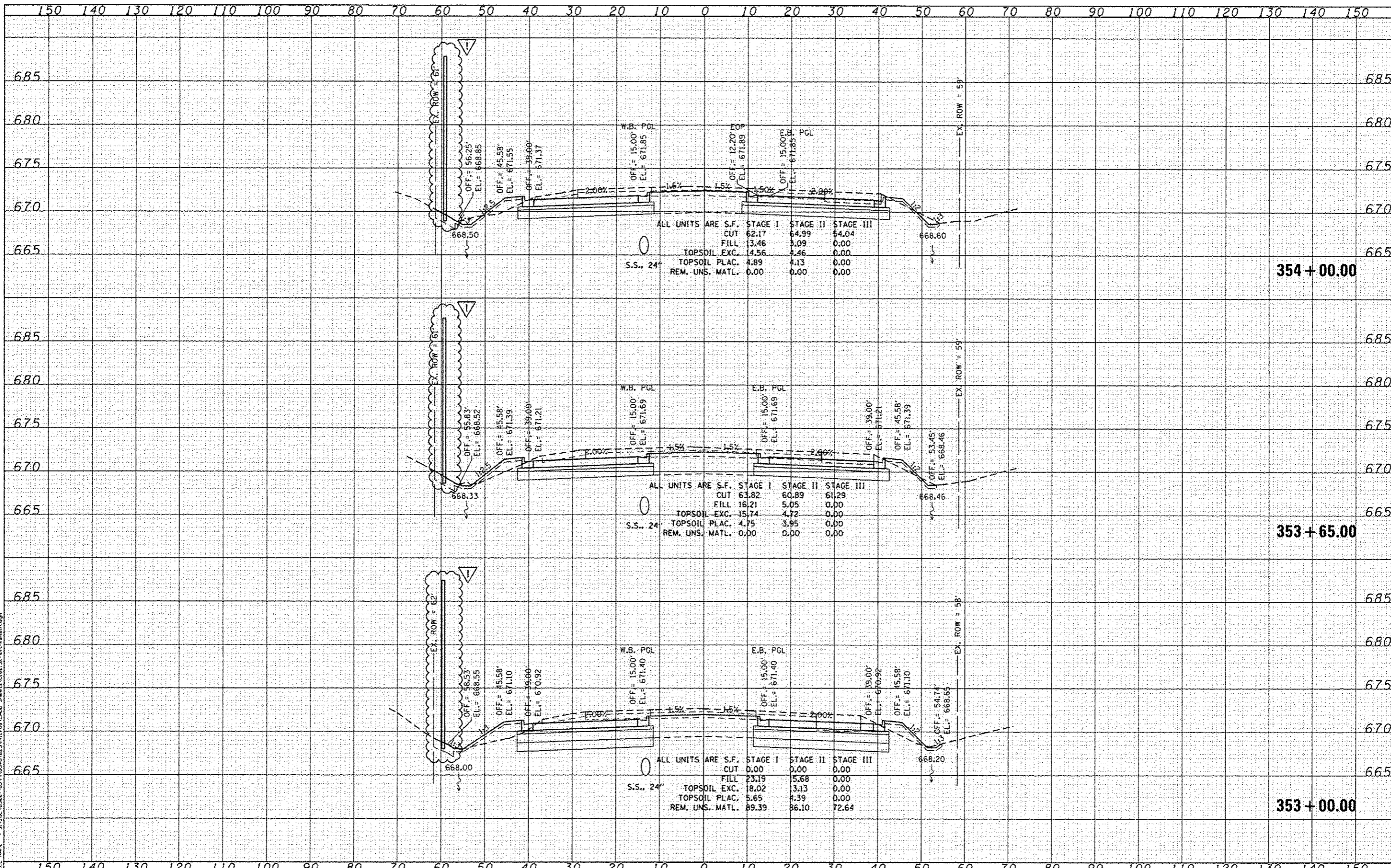
1170 SOUTH HOUBOLT ROAD
JOLIET, ILLINOIS 60431
815/ 744-4200
STRAND ASSOCIATES

USER NAME	DESIGNED - MAG	REVISED - 9-6-12
	DRAWN - AJJ	REVISED -
PLOT SCALE = 20,000' / 1"	CHECKED - BMA	REVISED -
PLOT DATE = 9/7/2012	DATE 4/25/2012	REVISED -

STATE OF ILLINOIS
DEPARTMENT OF TRANSPORTATION

US 30 CROSS SECTIONS
SCALE: SHEET OF SHEETS STA. 348+00.00 TO STA. 349+00.00

F.A.P. RTE.	SECTION	COUNTY	TOTAL SHEETS	SHEET NO.
349	11 WRS-3	KENDALL	527	457
CONTRACT NO. 60132			ILLINOIS FED. AID PROJECT	



DATE	
BY	
SAVED	
PRINTED	
NOTED	
AREAS CHECKED	
NO.	

DATE	
BY	
SAVED	
PRINTED	
NOTED	
AREAS CHECKED	
NO.	

FILE NAME = S:\JTB\6388-6399\6346\23\Kcr on U\400 Sheets\0160132.dwg



USER NAME = dennis	DESIGNED - MAG	REVISED - 9-6-12
	DRAWN - AJJ	REVISED -
PLOT SCALE = 20.0000' / 1"	CHECKED - BMA	REVISED -
PLOT DATE = 9/7/2012	DATE 4/25/2012	REVISED -

STATE OF ILLINOIS
DEPARTMENT OF TRANSPORTATION

US 30 CROSS SECTIONS

SCALE: SHEET OF SHEETS STA. 353+00.00 TO STA. 354+00.00

F.A.P. RTE.	SECTION	COUNTY	TOTAL SHEET NO.
349	11 WRS-3	KENDALL	527 460
CONTRACT NO. 60132			