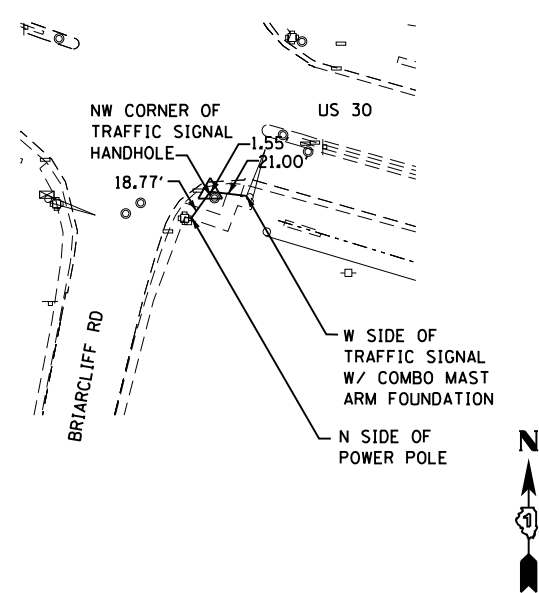
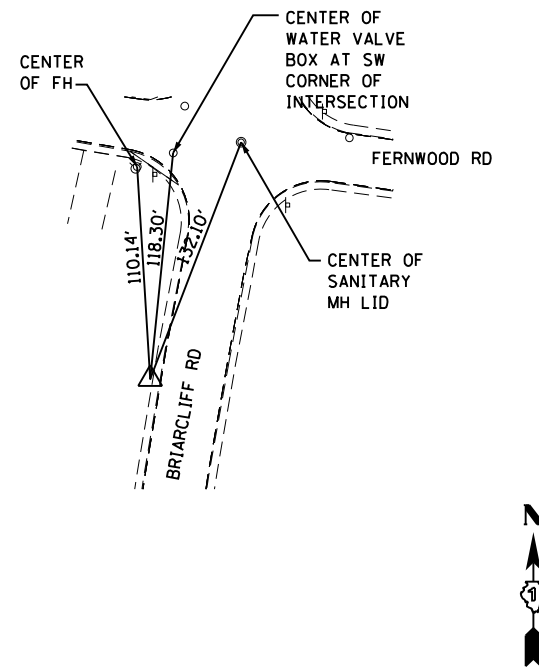


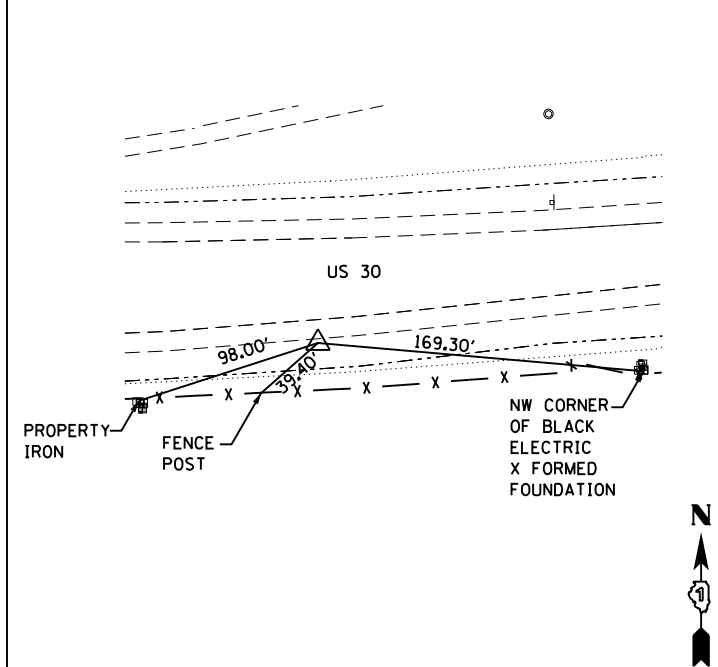
CP 25
REBAR W/ CAP
NORTHING: 1,840,249.226
EASTING: 982,816.014
ELEV.: 672.22
STA.: 306+58
OFF.: 45.30'



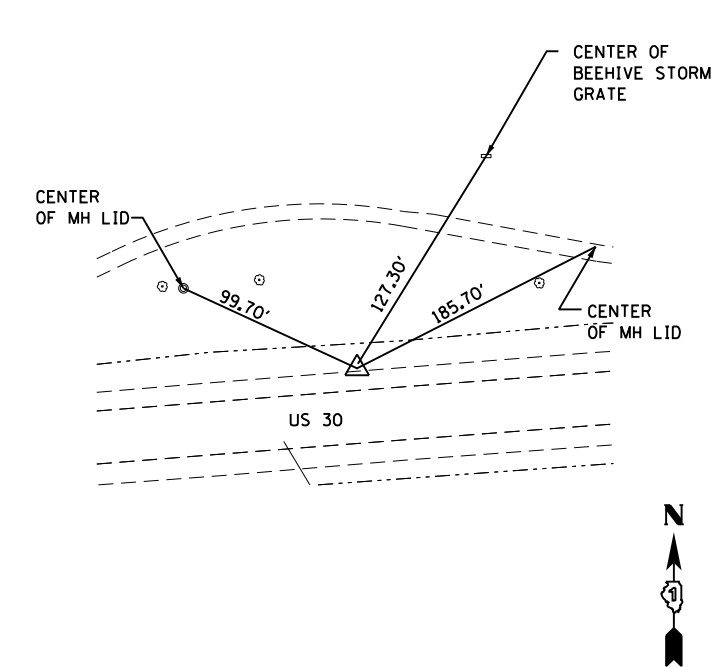
CP 27
REBAR W/ CAP
NORTHING: 1,839,899.166
EASTING: 982,679.445
ELEV.: 671.66
STA.: 306+34
OFF.: 420.00'



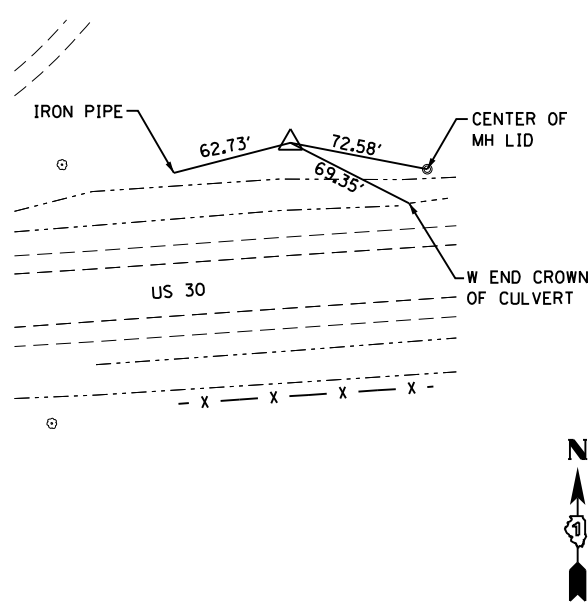
CP 30
REBAR W/ CAP
NORTHING: 1,840,133.320
EASTING: 983,908.168
ELEV.: 671.45
STA.: 317+47
OFF.: 34.29'



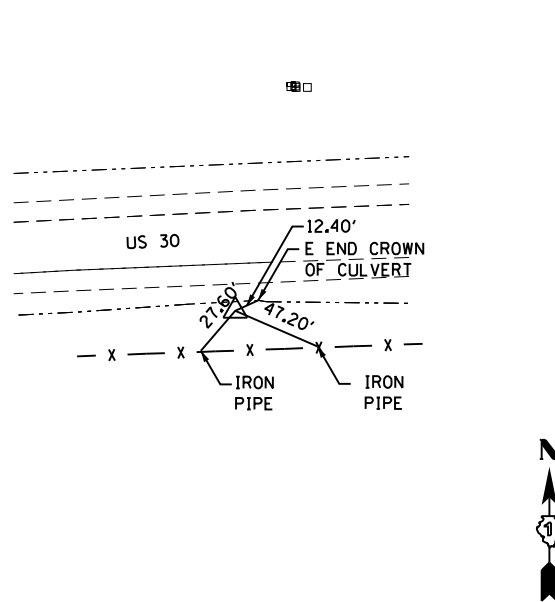
CP 31
REBAR W/ CAP
NORTHING: 1,840,264.972
EASTING: 984,794.836
ELEV.: 669.61
STA.: 326+41
OFF.: 25.31'



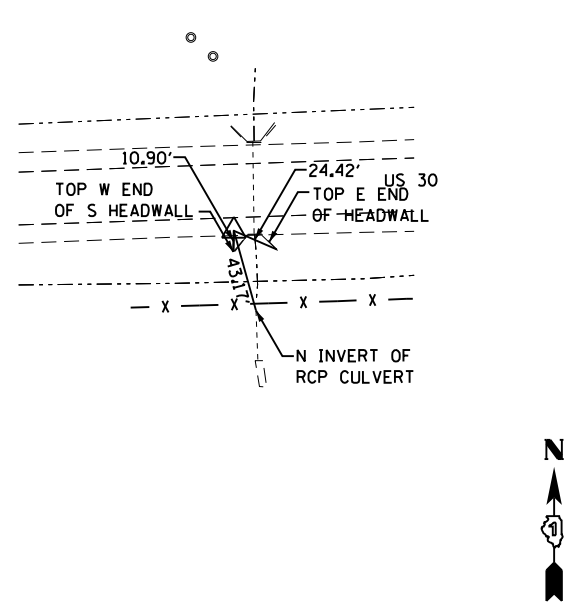
CP 35
REBAR W/ CAP
NORTHING: 1,840,342.727
EASTING: 985,222.864
ELEV.: 668.35
STA.: 330+73
OFF.: 72.39'



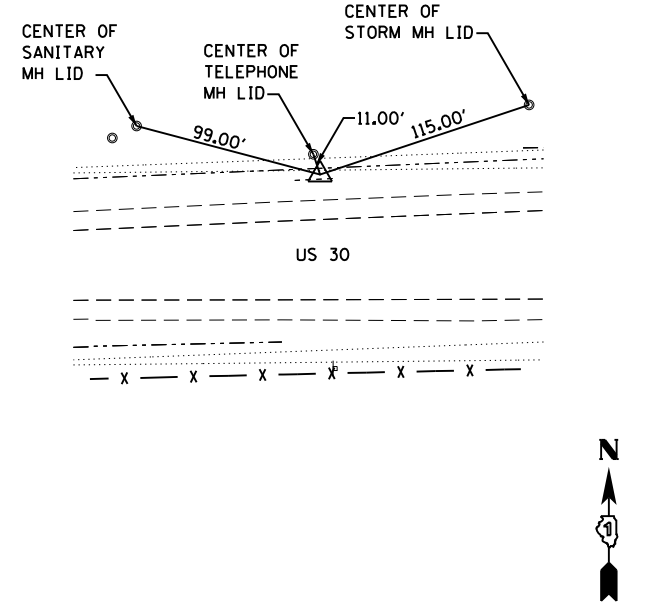
CP 40
REBAR W/ CAP
NORTHING: 1,840,282.087
EASTING: 986,106.944
ELEV.: 669.83
STA.: 339+52
OFF.: 37.67'



CP 42
REBAR W/ CAP
NORTHING: 1,840,317.046
EASTING: 986,551.324
ELEV.: 672.46
STA.: 343+97
OFF.: 20.78'



CP 45
REBAR W/ CAP
NORTHING: 1,840,398.810
EASTING: 987,135.723
ELEV.: 669.51
STA.: 349+84
OFF.: 44.34'



FILE NAME = s:\p1\6300--6395\6346\023\micro\sh1\0160132-sh1-ATB01.dgn

STRAND
ENGINEERS
1170 SOUTH HOUBOLT ROAD
JOLIET, ILLINOIS 60431
(815) 744-4200

USER NAME = amandaj
DESIGNED MAG
DRAWN B/JF
CHECKED S/JN
DATE 3/31/10
PLOT SCALE = 100.0000' / 1" =
PLOT DATE = 4/26/2012

DESIGNED MAG
DRAWN B/JF
CHECKED S/JN
DATE 3/31/10

REVISED -
REVISED -
REVISED -
REVISED -

STATE OF ILLINOIS
DEPARTMENT OF TRANSPORTATION

CONTROL POINT TIES

SCALE: AS SHOWN SHEET NO. OF SHEETS STA. TO STA.

| F.A.P. RTE. | SECTION | COUNTY | TOTAL SHEETS | SHEET NO. |
|---|----------|---------|--------------|-----------|
| 349 | 11 WRS-3 | KENDALL | 527 | 68 |
| CONTRACT NO. 60132 | | | | |
| FED. ROAD DIST. NO. 1 ILLINOIS FED. AID PROJECT | | | | |