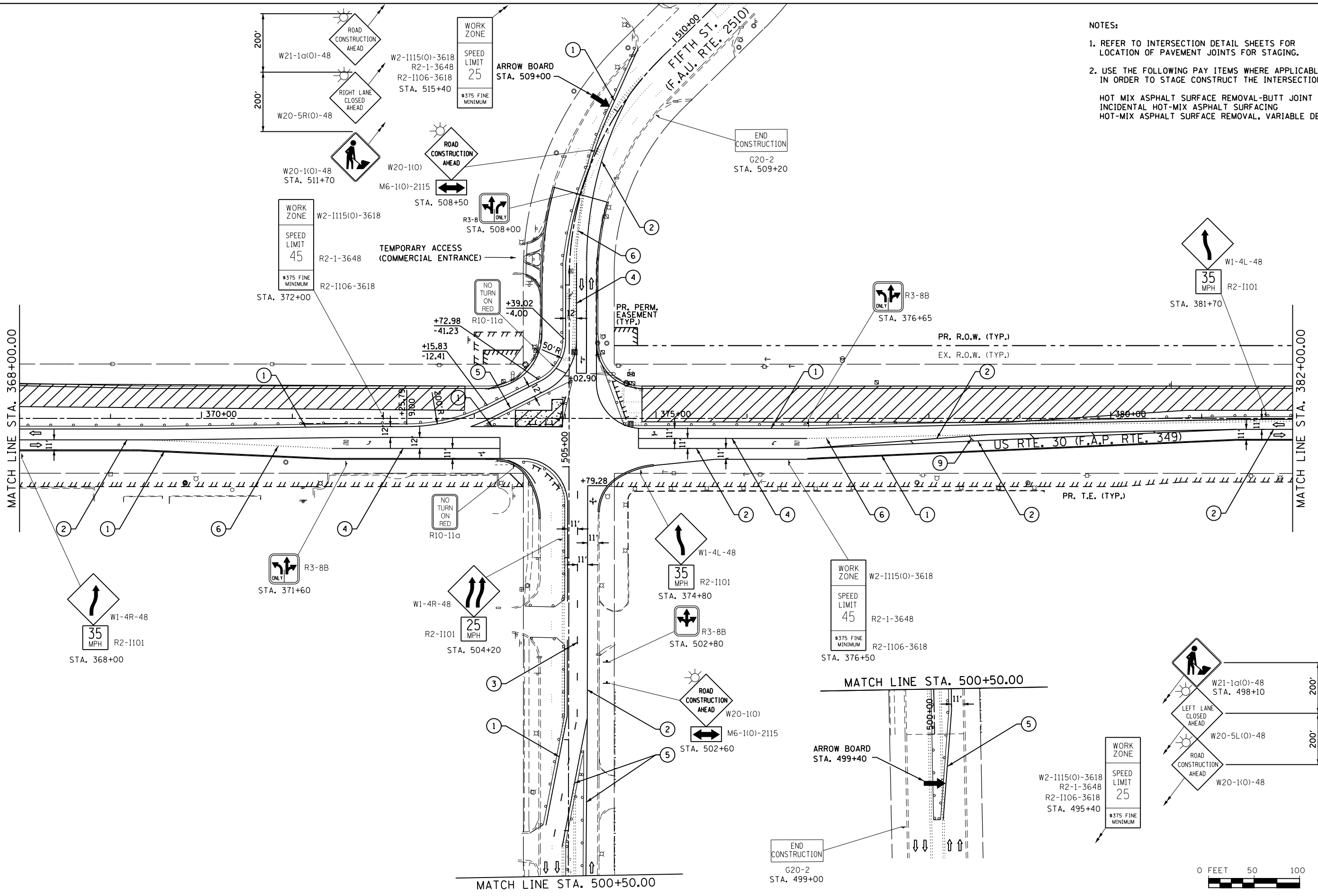


- NOTES:
1. REFER TO INTERSECTION DETAIL SHEETS FOR LOCATION OF PAVEMENT JOINTS FOR STAGING.
  2. USE THE FOLLOWING PAY ITEMS WHERE APPLICABLE IN ORDER TO STAGE CONSTRUCT THE INTERSECTION:
- HOT MIX ASPHALT SURFACE REMOVAL-BUTT JOINT
  - INCIDENTAL HOT-MIX ASPHALT SURFACING
  - HOT-MIX ASPHALT SURFACE REMOVAL, VARIABLE DEPTH



FILE NAME = S:\JOL\63300-6399\6346\023\Micros\CADD Sheets\0160132-shr-staging12.dgn



USER NAME = amanda.j	DESIGNED -	REVISED -
PLOT SCALE = 100.0000' / 1"	DRAWN -	REVISED -
PLOT DATE = 8/1/2012	CHECKED -	REVISED -
	DATE -	REVISED -

**STATE OF ILLINOIS  
DEPARTMENT OF TRANSPORTATION**

<b>MAINTENANCE OF TRAFFIC STAGE 1a</b>			
SCALE: AS SHOWN	SHEET NO.	OF SHEETS	STA. 368+00.00 TO STA. 382+00.00

F.A.P. RTE.	SECTION	COUNTY	TOTAL SHEETS	SHEET NO.
349	11 WRS-3	KENDALL	527	110
CONTRACT NO. 60132				
FED. ROAD DIST. NO. 1 ILLINOIS FED. AID PROJECT				

