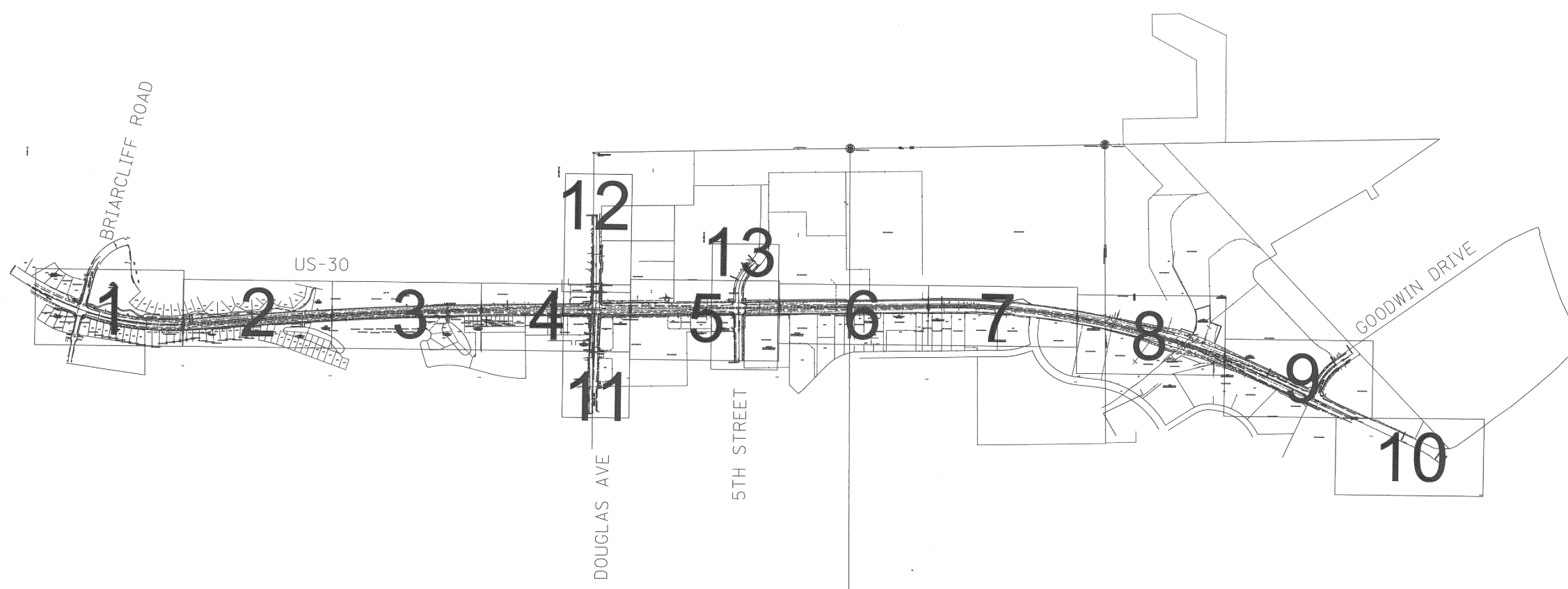


UTILITY OWNERS

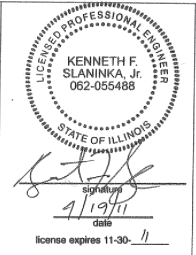
COMED	= ELECTRIC
COMCAST	= CABLE TV
AT&T	= TELEPHONE
AT&T	= FIBER OPTIC
VILLAGE OF OSWEGO	= FIBER OPTIC TRAFFIC SIGNAL
NICOR	= GAS
VILLAGE OF MONTGOMERY	= WATER
VILLAGE OF OSWEGO	= WATER



— A — A — A	AERIAL UTILITY
---	UNKNOWN
— CTV — CTV — CTV	CABLE TV
— T — T — T	TELEPHONE
— G — G — G	GAS
— E — E — E	ELECTRIC
— W — W — W	WATER
— FO — FO — FO	FIBER OPTIC
—>>>>>>	SEWER
+	TBE TEST HOLE

Utilities shown on these plans as depicted in the legend have been investigated by Cardno TBE in accordance with SUE Industry Standards. All other information shown has been provided to Cardno TBE by others. TBE's SUE field investigation was performed 3/01/11 through 4/08/11. Changes to utilities after 4/08/11 may have been made and therefore may result in variances from this plan. Consideration should be given to updating this plan if deemed advisable prior to final design and construction.

ALL UTILITIES SHOWN QUALITY LEVEL "B"
UNLESS NOTED OTHERWISE.



Utility Quality Level "A": Test Hole
Utility Quality Level "B": Designating
Utility Quality Level "C": Research with Survey
Utility Quality Level "D": Records Research

DESIGNED	LP	REVISED
DRAWN	KLC	REVISED
CHECKED	KFS	REVISED
DATE	4/13/11	REVISED

STATE OF ILLINOIS
DEPARTMENT OF TRANSPORTATION

US RT. 30 at Briarcliff Road to US RT. 34
Montgomery, IL

F.A. RTE.	SECTION	COUNTY	TOTAL SHEETS	SHEET NO.
	11WRS-3	Kane/Kendall		
Contract No. 60132				
FED. ROAD DIST. NO.	ILLINOIS	IDOT Project No.		

TBE Job No. IL09510432
SUE Plan Page: Cover