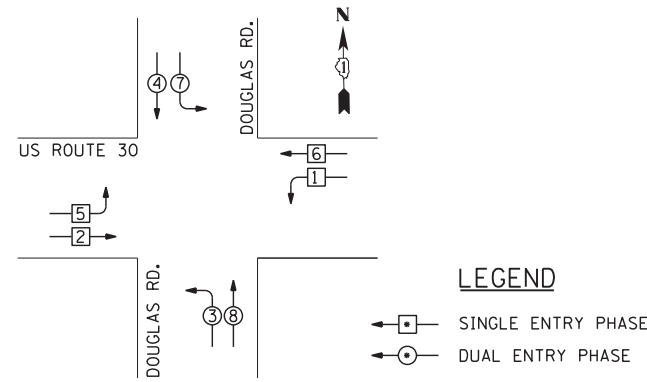
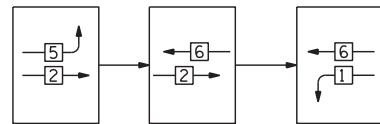


TEMPORARY CONTROLLER SEQUENCE



TEMPORARY PHASE DESIGNATION

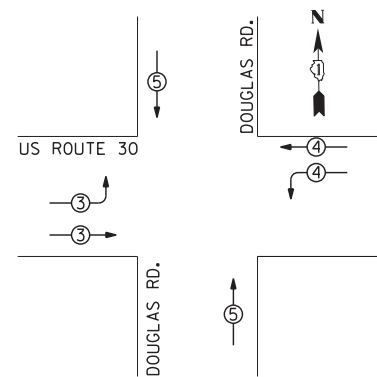
FOR PHASES 1, 2, 5, & 6 IN THE FOLLOWING PHASE DESIGNATION DIAGRAM SHOWN ABOVE, THE FOLLOWING PHASE SEQUENCE SHALL BE FOLLOWED:



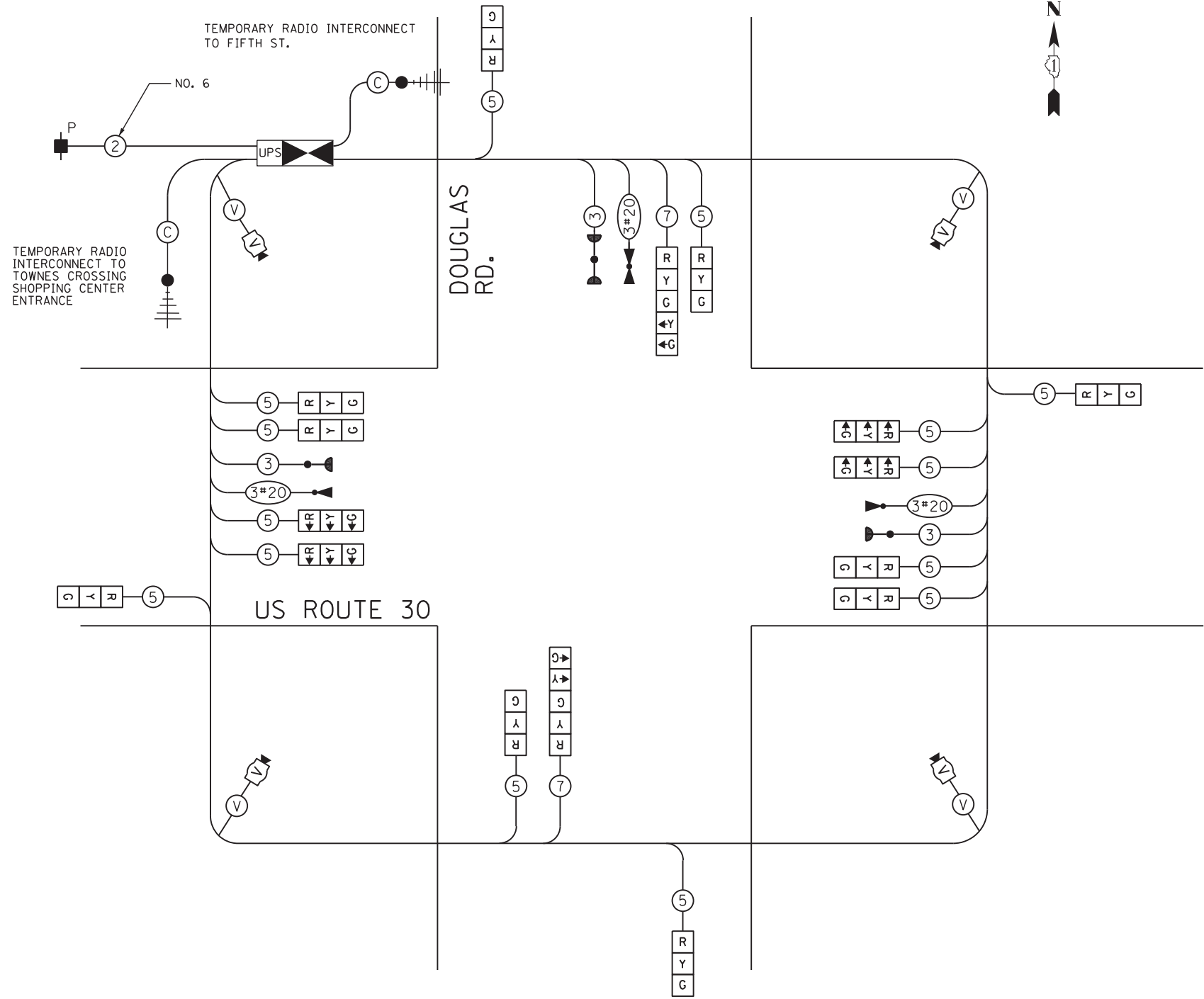
PHASES 3, 4, 7 & 8 SHALL FOLLOW THE STANDARD SEQUENCE IN ACCORDANCE WITH STANDARD 857001

NOTE: LEAD LAG PHASING SHALL ONLY APPLY TO STAGE 2d AND 3.

TEMPORARY EMERGENCY VEHICLE PREEMPTION SEQUENCE



TEMPORARY EMERGENCY VEHICLE PREEMPTORS			
EMERGENCY VEHICLE PREEMPTOR	3	4	5
MOVEMENT	[Right arrow]	[Left arrow]	[Up/Down arrows]



TEMPORARY CABLE PLAN

I.D.O.T. TRAFFIC SIGNAL INSTALLATION ELECTRICAL SERVICE REQUIREMENTS					
TYPE	NO LAMPS	WATTAGE		% OPERATION	TOTAL WATTAGE
		INCAND.	LED		
SIGNAL (RED)	16		17	0.50	136.0
(YELLOW)	16		25	0.25	100.0
(GREEN)	16		15	0.25	60.0
ARROW	4		12	0.10	4.8
PED. SIGNAL	-		25	1.00	-
ILLUM. SIGN	-		25	0.10	-
CONTROLLER	1		100	1.00	100.0
VIDEO SYSTEM	1	150	-	1.00	150.0
TOTAL =					550.8

ENERGY COST TO:

VILLAGE OF MONTGOMERY
 1300 S. BROADWAY
 MONTGOMERY, ILLINOIS 60538

ENERGY SUPPLY CONTACT: MARK SHERIBEL
 PHONE: 630-723-2128
 COMPANY: COMMONWEALTH EDISON

NOTE:
 THE TEMPORARY TRAFFIC SIGNAL CONTROL EQUIPMENT FOR THIS PROJECT SHALL BE "EAGLE" TO MATCH THE EXISTING ADJACENT SYSTEM.

\\Dc010\Projects\264\Drawings\CADD_Sheets\160132-SHT-TS-14.dgn

SINGH
 CONSULTING ENGINEERS
 www.singhinc.com

USER NAME = vpelegrinos	DESIGNED - VO	REVISED -
PLOT SCALE = 20.000' / in.	DRAWN - YJ	REVISED -
PLOT DATE = 4/25/2012	CHECKED - KGP	REVISED -
	DATE -	REVISED -

STATE OF ILLINOIS
 DEPARTMENT OF TRANSPORTATION

TEMPORARY TRAFFIC SIGNAL CABLE PLAN, AND PHASE DESIGNATION DIAGRAM
 US ROUTE 30 AT DOUGLAS RD. STAGES 2d, 3 AND FINAL GEOMETRICS

SCALE: N.T.S. SHEET NO. OF SHEETS STA. TO STA.

F.A.P. RTE.	SECTION	COUNTY	TOTAL SHEETS	SHEET NO.
349	11 WRS-3	KENDALL	527	258
CONTRACT NO. 60132				
FED. ROAD DIST. NO. 1 ILLINOIS FED. AID PROJECT				