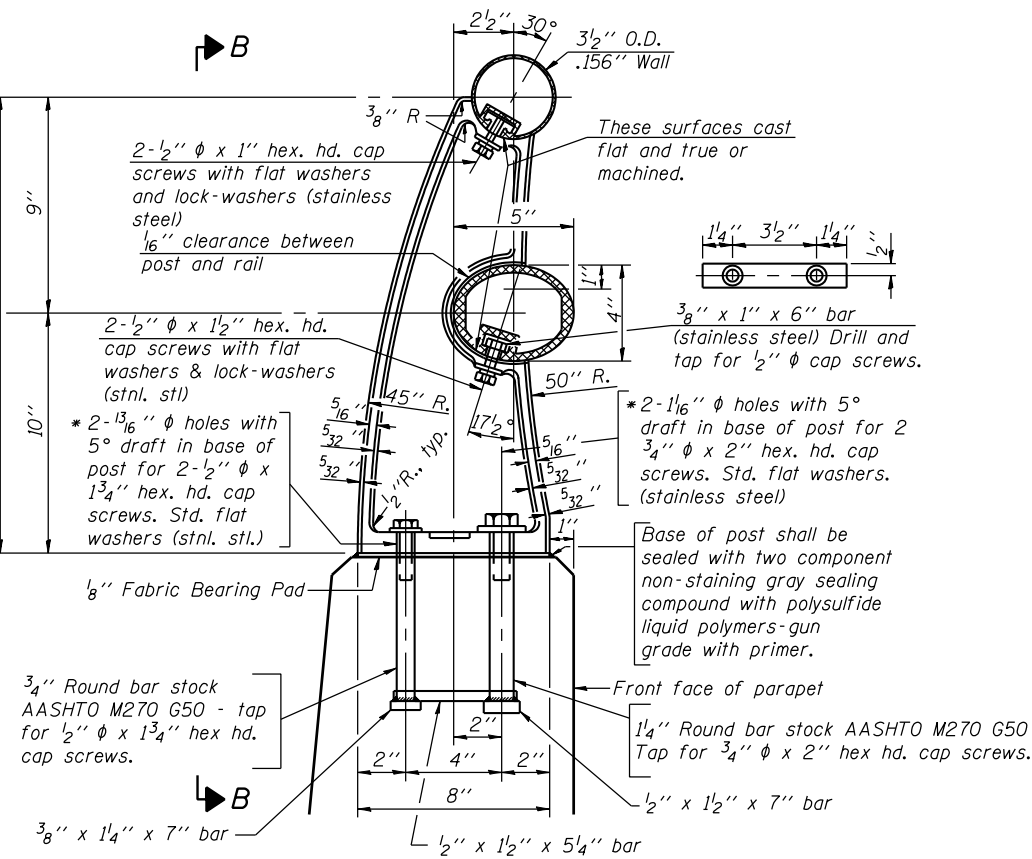


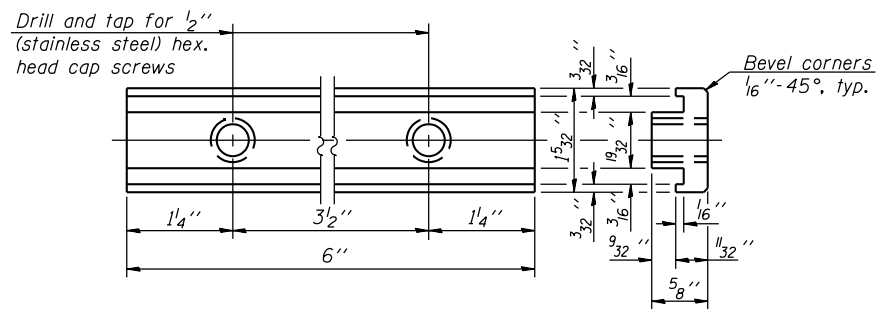
VIEW B-B

RAIL POST DETAILS



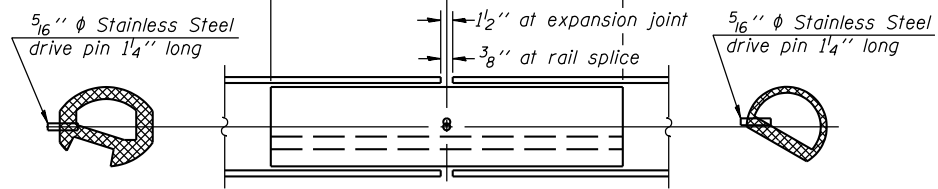
SECTION A-A

* In lieu of the cast-in-place anchor device shown, the Contractor has the option of drilling and setting stainless steel anchor rods of the same diameter and grade as the specified cap rods according to Article 509.06 of the Standard Specifications. Embedment shall be according to the manufacturer's specifications.

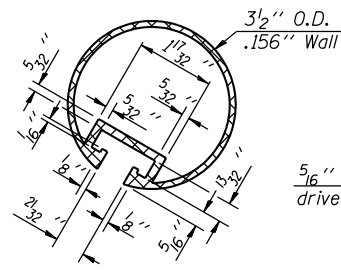


RAIL POST CLAMP BAR

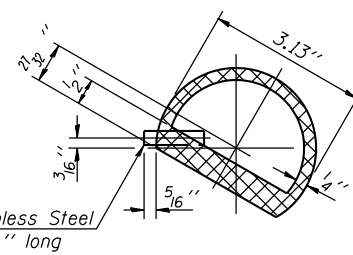
For Top Rail



RAIL SPLICE

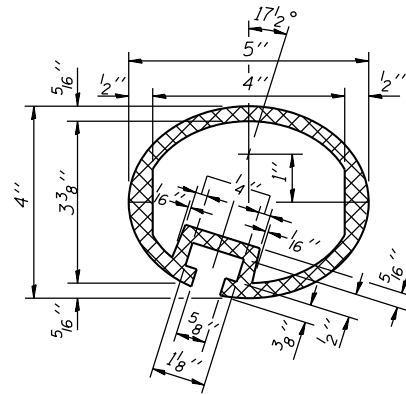


SECTION THRU TOP RAIL

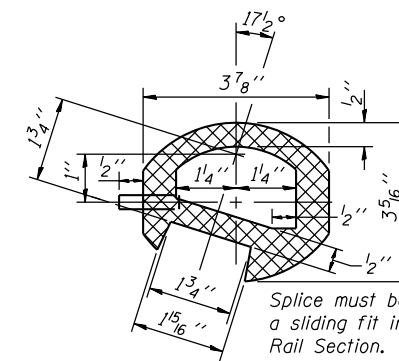


SECTION THRU SPLICE

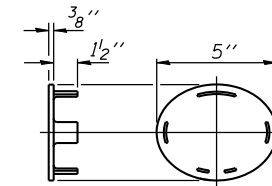
For Top Rail



SEC. THRU ELLIPTICAL RAIL SECTION

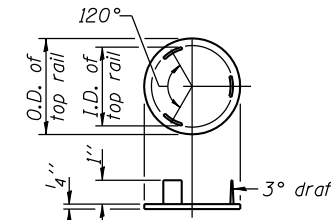


SEC. THRU SPLICE



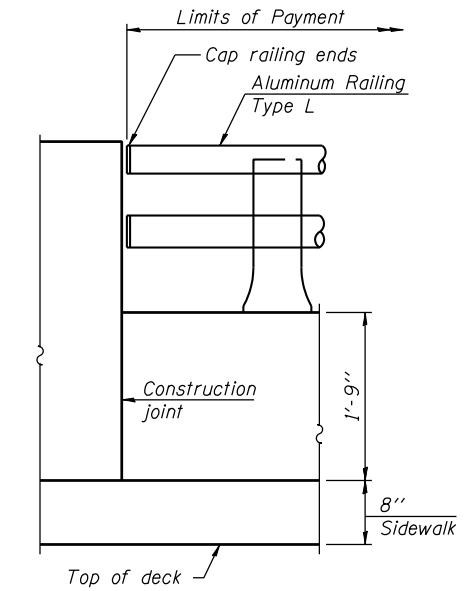
CAST END CAP

For bottom rail
DRIVE FIT TYPE



CAST END CAP

For top rail



RAIL END TREATMENT FOR TYPE 5 AND 6 TERMINAL

BILL OF MATERIAL

Item	Unit	Quantity
Aluminum Railing, Type L	Foot	137

Notes:
All Posts shall be normal to parapet.
All joints in rail shall be spliced per detail.
All exposed rail ends shall be capped per detail.
Provide 1-1/8 inch and 2-1/16 inch Aluminum Shims for 25% of the Posts. Rail elements shall be parallel to Grade-high spots will be ground and low spots shimmed.
See sheet 11 and 14 of 27 for rail post spacing.

FILE NAME = s:\p1\6380-6395\6346\023\micro\st\plans\0470301-60132-010-SDWLK.dgn