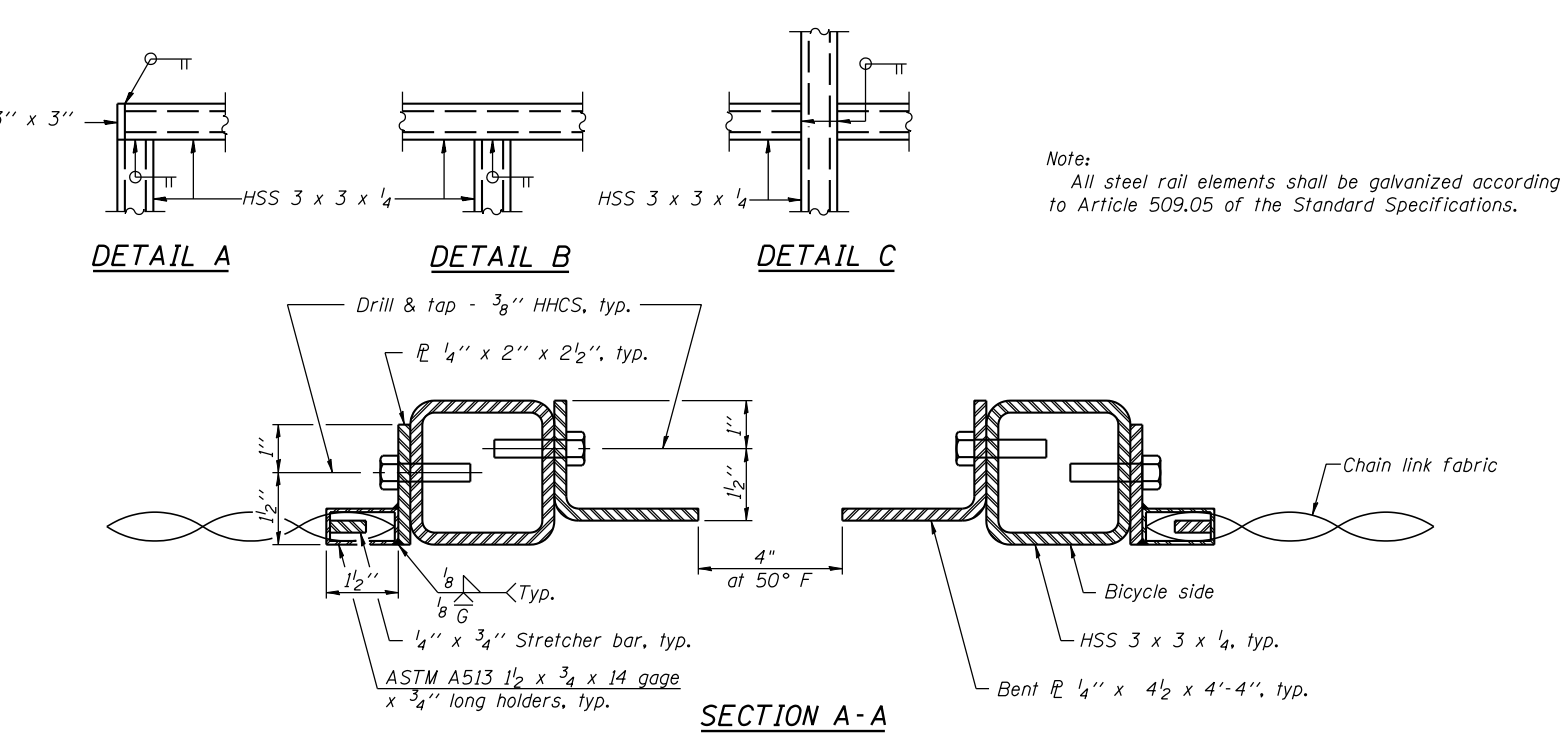
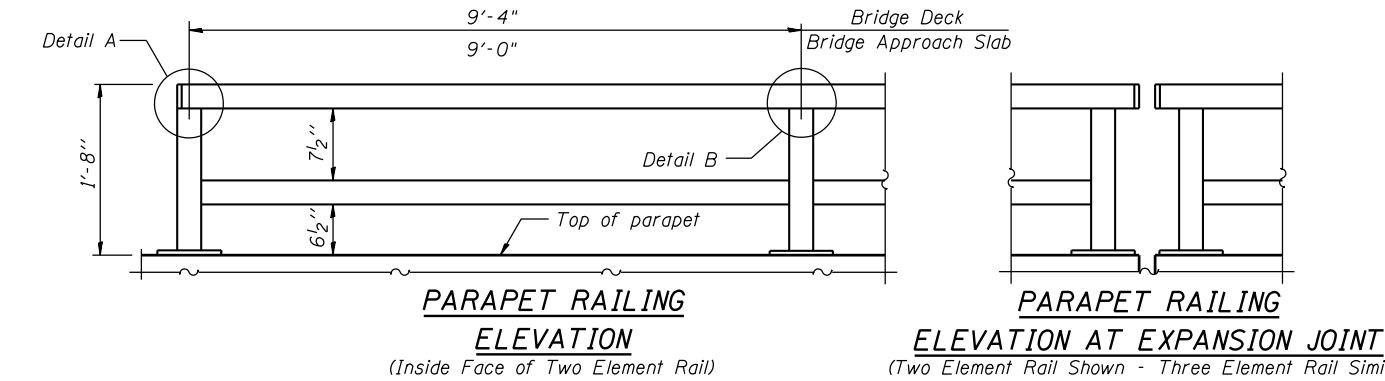
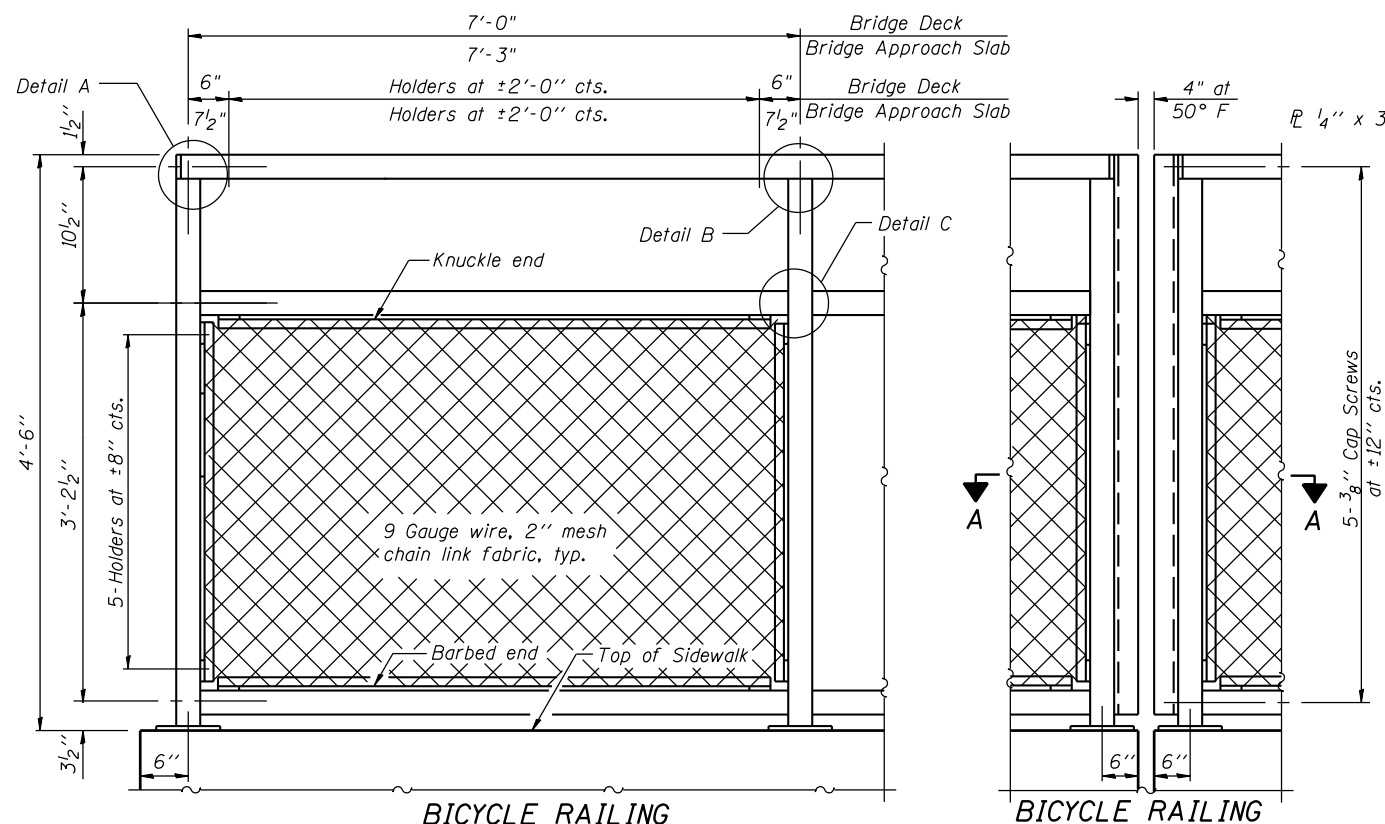
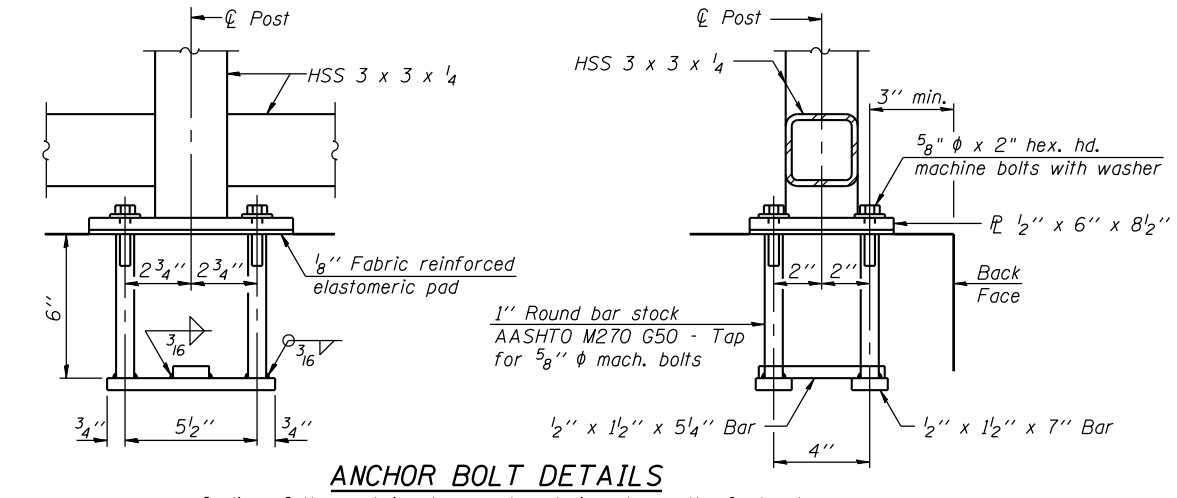
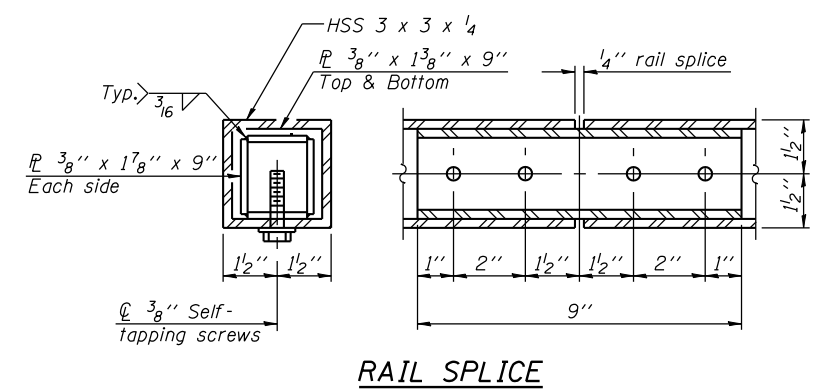
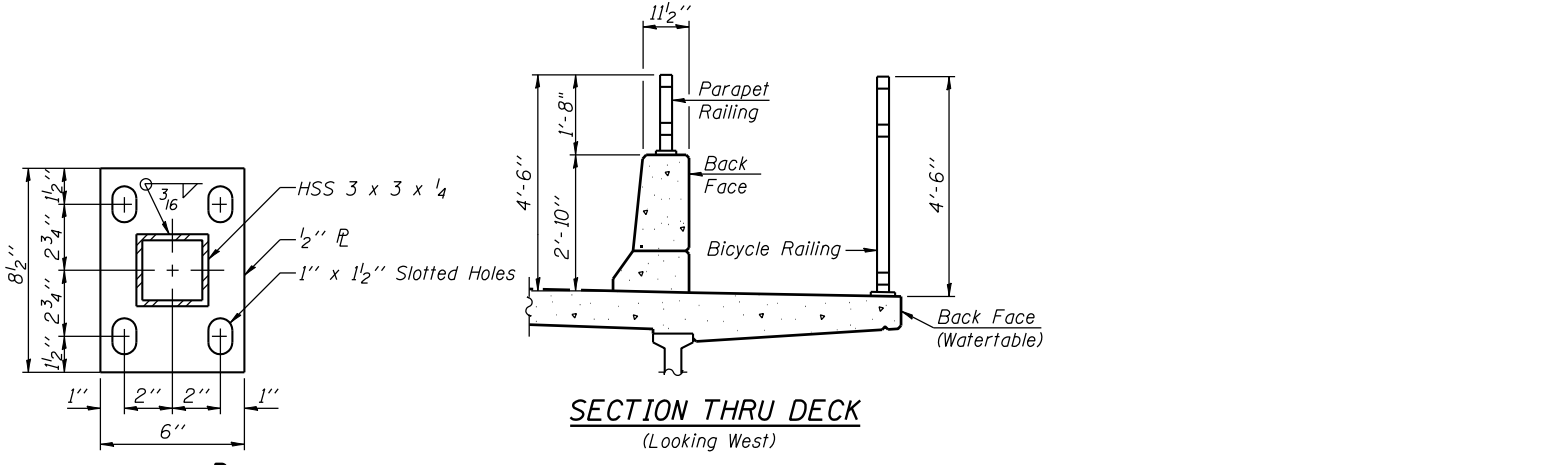


FILE NAME = s:\p1\6380--6395\6346\023\micro\sh\str_plans\0470301-60132-011-Rail.dgn



Note:
All steel rail elements shall be galvanized according to Article 509.05 of the Standard Specifications.



In lieu of the cast-in-place anchor device shown, the Contractor has the option of drilling and setting 5/8" φ anchor rods according to Article 509.06 of the Standard Specifications. Embedment shall be according to the manufacturer's specifications.

BILL OF MATERIAL

Item	Unit	Quantity
Bicycle Railing	Foot	145
Parapet Railing	Foot	140

R-29 7-1-10 (10'-0" Maximum Post Spacing)

1170 SOUTH HOUBOLT ROAD JOLIET, ILLINOIS 60431 (815) 744-4200 IDFPR NO. 184-001273	USER NAME = brianf	DESIGNED KDH	REVISIONS
	CHECKED AJS	CHECKED AJS	REVISIONS
	PLOT SCALE =	DRAWN BJF	REVISIONS
	PLOT DATE = 5/1/2012	CHECKED KDH	REVISIONS

STATE OF ILLINOIS
DEPARTMENT OF TRANSPORTATION

BICYCLE RAILING
STRUCTURE NO. 047-0301

SHEET NO. 16 OF 27 SHEETS

F.A.P. RTE. 349	SECTION 11 WRS-3	COUNTY KENDALL	TOTAL SHEETS 527	SHEET NO. 304
			CONTRACT NO. 60132	
ILLINOIS FED. AID PROJECT				