

F.A.P. RTE.	SECTION	COUNTY	TOTAL SHEETS	SHEET NO.
349	(10 & 11 VB) R-3	KANE AND KENDALL ILLINOIS	*507	1
KANE AND KENDALL ILLINOIS			CONTRACT NO. 60133	

\*507\*15 = 522

D-91-017-10



LOCATION OF SECTION INDICATED THUS: - [black box] -

PROFESSIONAL ENGINEER'S SIGN & SEAL  
*Peter M. Johnston*  
 062-047647  
 REGISTERED PROFESSIONAL ENGINEER OF ILLINOIS  
 EXPIRES: 11-30-13

STATE OF ILLINOIS  
 DEPARTMENT OF TRANSPORTATION  
 DIVISION OF HIGHWAYS  
 SUBMITTED MAY 15, 2012  
*Diana M. O'Hea*  
 DEPUTY DIRECTOR OF HIGHWAYS, REGION ENGINEER  
August 17, 2012  
*John D. Baranzelli, P.E.*  
 acting ENGINEER OF DESIGN AND ENVIRONMENT  
August 17, 2012  
*William Z. Frey, Jr.*  
 acting DIRECTOR OF HIGHWAYS, CHIEF ENGINEER

PRINTED BY THE AUTHORITY OF THE STATE OF ILLINOIS

STATE OF ILLINOIS  
 DEPARTMENT OF TRANSPORTATION  
 DIVISION OF HIGHWAYS

PROPOSED  
 HIGHWAY PLANS

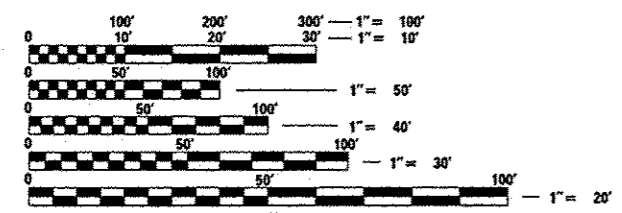
FAP ROUTE 349 (US ROUTE 30)  
 SECTION: (10 & 11 VB) R-3  
 AT IL ROUTE 31 AND BURLINGTON NORTHERN SANTA FE RAILROAD  
 WIDENING AND RECONSTRUCTION  
 PROJECT: NHF-0349 (010)  
 KANE AND KENDALL COUNTIES  
 C-91-017-10

FOR INDEX OF SHEETS, SEE SHEET NO. 2

U.S. 30  
 EXISTING ADT = 30,500 (2007)  
 PROPOSED ADT = 38,000 (2030)  
 SPEED LIMIT = 45 MPH

IL ROUTE 31  
 EXISTING ADT = 20,400 (2007)  
 PROPOSED ADT = 28,000 (2030)  
 SPEED LIMIT = 45 MPH

THE IMPROVEMENT IS LOCATED WITHIN THE VILLAGE OF MONTGOMERY

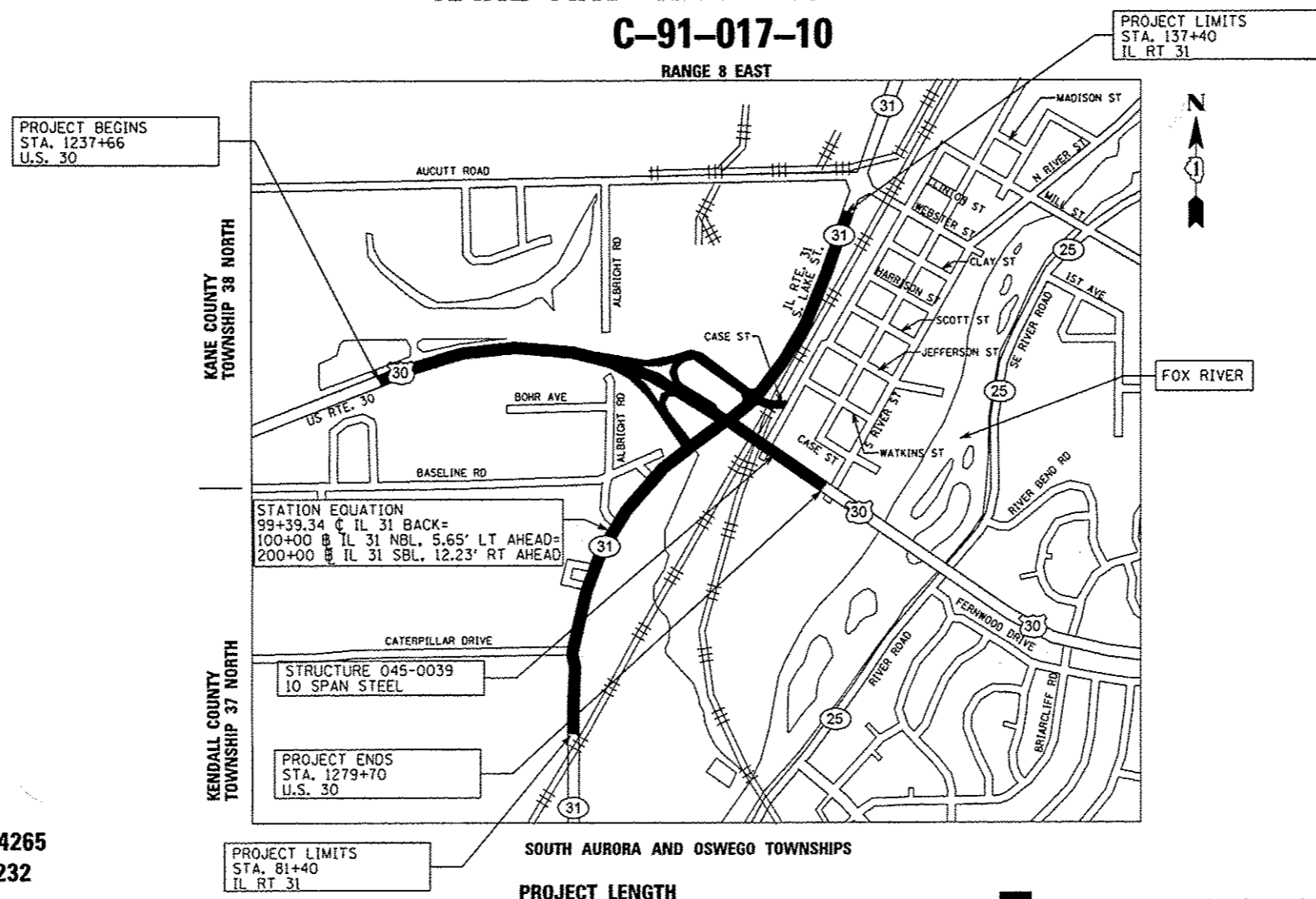


FULL SIZE PLANS HAVE BEEN PREPARED USING STANDARD ENGINEERING SCALES. REDUCED SIZED PLANS WILL NOT CONFORM TO STANDARD SCALES. IN MAKING MEASUREMENTS ON REDUCED PLANS, THE ABOVE SCALES MAY BE USED.

J.U.L.I.E.  
 JOINT UTILITY LOCATION INFORMATION FOR EXCAVATION  
 1-800-892-0123  
 OR 811

PROJECT ENGINEER: CRAIG BAUER 847-705-4265  
 PROJECT MANAGER: LONG TRAN 847-705-4232

CONTRACT NO. 60133



**GRaEF** 8501 W. Higgins Road; Suite 280  
 Chicago, Illinois 60631  
 (773) 399-0112