

ALIGNMENT COORDINATES - C IL 31			
RAMPA	STATION	N	E
POB	79+00.00	1,839,144.96	978,219.18
PC	84+03.98	1,839,648.91	978,224.81
PI	86+58.46	1,839,903.37	978,227.66
PCC	89+12.09	1,840,154.89	978,266.41
PI	91+21.91	1,840,362.56	978,296.37
PCC	93+31.20	1,840,564.97	978,351.66
PI	95+36.96	1,840,764.10	978,403.47
PCC	97+41.93	1,840,953.05	978,484.92
PI	98+40.69	1,841,042.67	978,526.44
PT	99+39.34	1,841,128.38	978,575.51

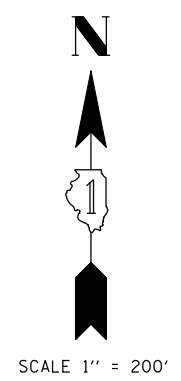
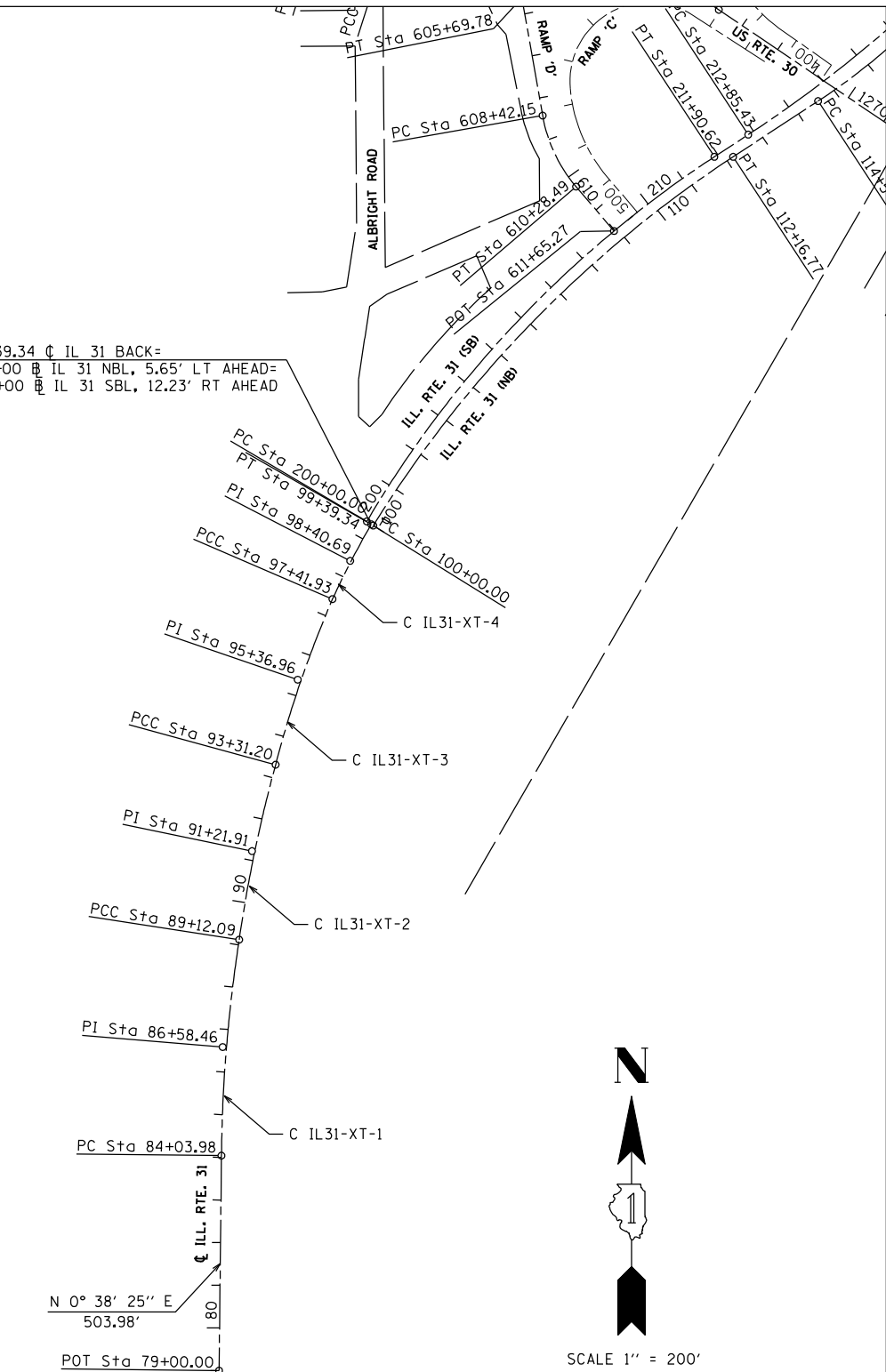
C IL31-XT-1
 PI STA. = 86+58.46
 $\Delta = 8^\circ 07' 10''$ (RT)
 $D = 1^\circ 35' 53''$
 $R = 3,585.58'$
 $T = 254.48'$
 $L = 508.11'$
 $E = 9.02'$
 $e = 2.0\%$ (EX.)
 T.R. = N/A
 S.E. RUN = N/A
 P.C. STA. = 84+03.98
 P.T. STA. = 89+12.09
 DS=50 MPH; PS=45 MPH

C IL31-XT-2
 PI STA. = 91+21.91
 $\Delta = 7^\circ 04' 07''$ (RT)
 $D = 1^\circ 41' 12''$
 $R = 3,397.23'$
 $T = 209.82'$
 $L = 419.11'$
 $E = 6.47'$
 $e = 2.0\%$ (EX.)
 T.R. = N/A
 S.E. RUN = N/A
 P.C. STA. = 89+12.09
 P.T. STA. = 93+31.20
 DS=50 MPH; PS=45 MPH

C IL31-XT-3
 PI STA. = 95+36.96
 $\Delta = 8^\circ 44' 13''$ (RT)
 $D = 2^\circ 07' 38''$
 $R = 2,693.52'$
 $T = 205.76'$
 $L = 410.73'$
 $E = 7.85'$
 $e = 2.0\%$ (EX.)
 T.R. = N/A
 S.E. RUN = N/A
 P.C. STA. = 93+31.20
 P.T. STA. = 97+41.93
 DS=50 MPH; PS=45 MPH

C IL31-XT-4
 PI STA. = 98+40.69
 $\Delta = 4^\circ 56' 18''$ (RT)
 $D = 2^\circ 30' 06''$
 $R = 2,290.38'$
 $T = 98.76'$
 $L = 197.41'$
 $E = 2.13'$
 $e = 2.0\%$ (EX.)
 T.R. = N/A
 S.E. RUN = N/A
 P.C. STA. = 97+41.93
 P.T. STA. = 99+39.34
 DS=50 MPH; PS=45 MPH

99+39.34 C IL 31 BACK=
 100+00 C IL 31 NBL, 5.65' LT AHEAD=
 200+00 C IL 31 SBL, 12.23' RT AHEAD



8/15/2012 12:40:38 AM

USER NAME = 1654	DESIGNED - JWB	REVISED -
	DRAWN - JWB	REVISED -
PLOT SCALE = 400.00' / IN.	CHECKED - RS	REVISED -
PLOT DATE = 5/16/2012	DATE - 05/11/2012	REVISED -

**STATE OF ILLINOIS
DEPARTMENT OF TRANSPORTATION**

**U.S. ROUTE 30 AT IL ROUTE 31
ALIGNMENTS AND TIES**

SCALE: 1"=200' SHEET NO. -- STA. ----- TO STA. -----

F.A.P. RTE.	SECTION	COUNTY	TOTAL SHEETS	SHEET NO.
349	(10 & 11 VB) R-3	*	507	65
* KANE AND KENDALL			CONTRACT NO. 60133	
ILLINOIS FED. AID PROJECT				