

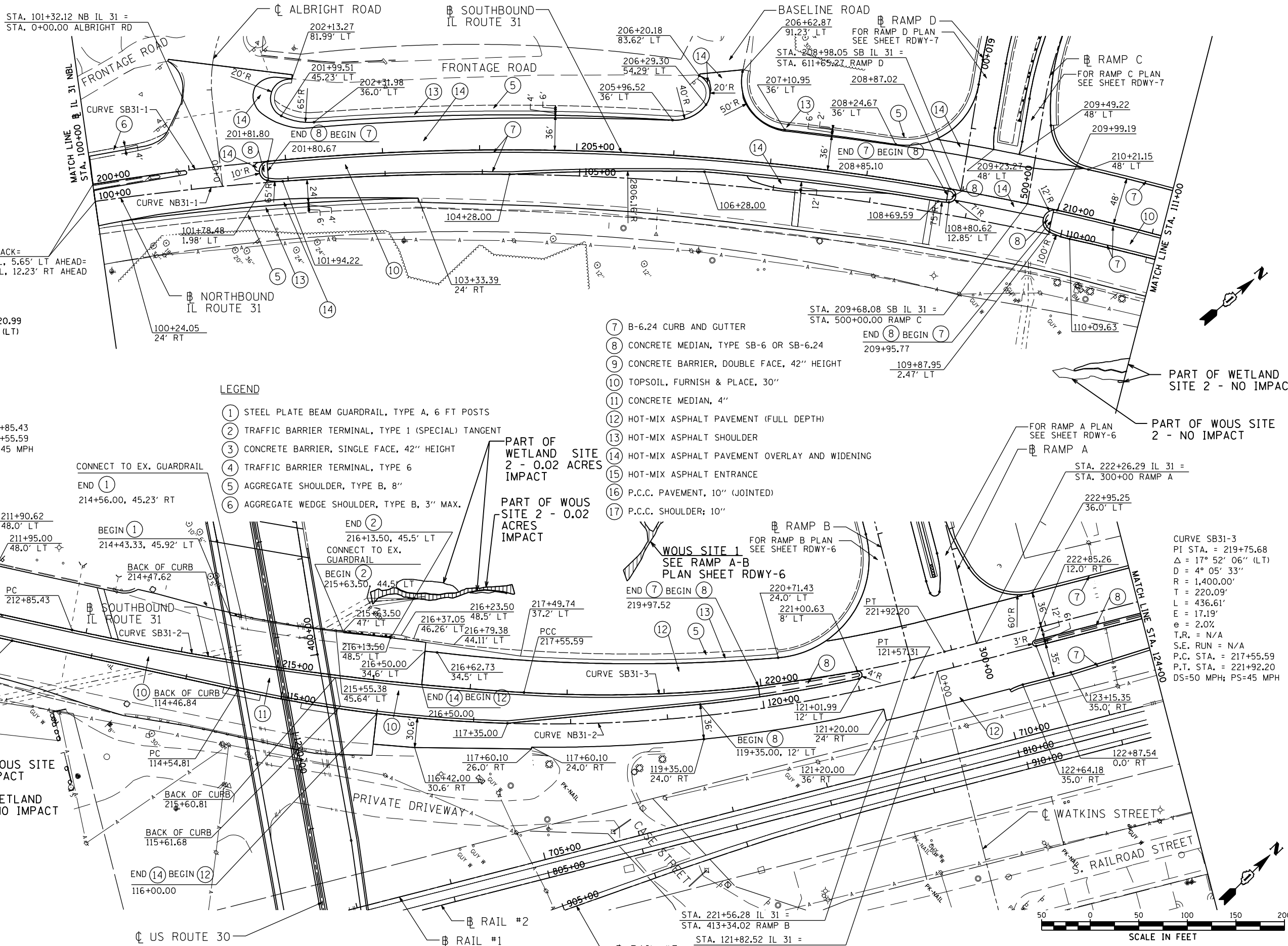
CURVE NB31-1
 PI STA. = 106+18.14
 $\Delta = 24^\circ 53' 49''$ (RT)
 $D = 2^\circ 02' 46''$
 $R = 2,800.16'$
 $T = 618.14'$
 $L = 1,216.77'$
 $E = 67.42'$
 $e = 2.0\%$ (EX.)
 $T.R. = N/A$
 $S.E. RUN = N/A$
 $P.C. STA. = 100+00.00$
 $P.T. STA. = 112+16.77$
 $DS=50$ MPH; $PS=45$ MPH

CURVE NB31-2
 PI STA. = 118+12.62
 $\Delta = 26^\circ 49' 55''$ (LT)
 $D = 3^\circ 49' 10''$
 $R = 1,500.08'$
 $T = 357.81'$
 $L = 702.50'$
 $E = 42.08'$
 $e = 2.0\%$
 $T.R. = N/A$
 $S.E. RUN = N/A$
 $P.C. STA. = 114+54.81$
 $P.T. STA. = 121+57.31$
 $DS=50$ MPH; $PS=45$ MPH

CURVE SB31-1
 PI STA. = 206+05.93
 $\Delta = 26^\circ 14' 15''$ (RT)
 $D = 2^\circ 12' 13''$
 $R = 2,600.00'$
 $T = 605.93'$
 $L = 1,190.62'$
 $E = 69.67'$
 $e = 2.0\%$ (EX.)
 $T.R. = N/A$
 $S.E. RUN = N/A$
 $P.C. STA. = 200+00.00$
 $P.T. STA. = 211+90.62$
 $DS=50$ MPH; $PS=45$ MPH

CURVE SB31-2
 PI STA. = 215+20.99
 $\Delta = 8^\circ 57' 52''$ (LT)
 $D = 1^\circ 54' 24''$
 $R = 3,005.00'$
 $T = 235.56'$
 $L = 470.16'$
 $E = 9.22'$
 $e = 2.0\%$ (EX.)
 $T.R. = N/A$
 $S.E. RUN = N/A$
 $P.C. STA. = 212+85.43$
 $P.T. STA. = 217+55.59$
 $DS=50$ MPH; $PS=45$ MPH

99+39.34 ϕ IL 31 BACK=
 100+00 ϕ IL 31 NBL, 5.65' LT AHEAD=
 200+00 ϕ IL 31 SBL, 12.23' RT AHEAD



LEGEND

- ① STEEL PLATE BEAM GUARDRAIL, TYPE A, 6 FT POSTS
- ② TRAFFIC BARRIER TERMINAL, TYPE 1 (SPECIAL) TANGENT
- ③ CONCRETE BARRIER, SINGLE FACE, 42" HEIGHT
- ④ TRAFFIC BARRIER TERMINAL, TYPE 6
- ⑤ AGGREGATE SHOULDER, TYPE B, 8"
- ⑥ AGGREGATE WEDGE SHOULDER, TYPE B, 3" MAX.
- ⑦ B-6.24 CURB AND GUTTER
- ⑧ CONCRETE MEDIAN, TYPE SB-6 OR SB-6.24
- ⑨ CONCRETE BARRIER, DOUBLE FACE, 42" HEIGHT
- ⑩ TOPSOIL, FURNISH & PLACE, 30"
- ⑪ CONCRETE MEDIAN, 4"
- ⑫ HOT-MIX ASPHALT PAVEMENT (FULL DEPTH)
- ⑬ HOT-MIX ASPHALT SHOULDER
- ⑭ HOT-MIX ASPHALT PAVEMENT OVERLAY AND WIDENING
- ⑮ HOT-MIX ASPHALT ENTRANCE
- ⑯ P.C.C. PAVEMENT, 10" (JOINTED)
- ⑰ P.C.C. SHOULDER, 10"

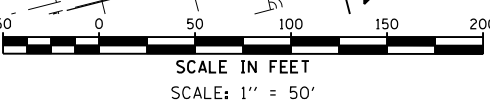
PART OF WETLAND SITE 2 - 0.02 ACRES IMPACT

PART OF WOUS SITE 2 - 0.02 ACRES IMPACT

WOUS SITE 1
 SEE RAMP A-B
 PLAN SHEET RDWY-6

-PART OF WOUS SITE 2 - NO IMPACT

PART OF WETLAND SITE 2 - NO IMPACT



P:\Jobs\2010\201030033\cd\site\vgd\00\0160133-sit+plan-03-2.dgn
 6/15/2012 5:37:13 PM

USER NAME = 1654	DESIGNED - JWB	REVISED -
	DRAWN - JWB	REVISED -
PLOT SCALE = 100.0000' / IN.	CHECKED - RS	REVISED -
PLOT DATE = 6/15/2012	DATE - 06/15/2012	REVISED -

**STATE OF ILLINOIS
 DEPARTMENT OF TRANSPORTATION**

**U.S. ROUTE 30 AT IL ROUTE 31
 ROADWAY PLAN - IL ROUTE 31**

SCALE: 1"=50' SHEET NO. RDWY-4 OF 7 STA. 100+00 TO STA. 124+00

F.A.P. RTE.	SECTION	COUNTY	TOTAL SHEETS	SHEET NO.
349	(10 & 11 VB) R-3		507	78
* KANE AND KENDALL			CONTRACT NO. 60133	
ILLINOIS FED. AID PROJECT				