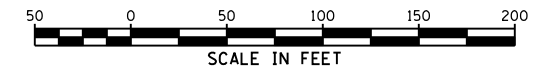
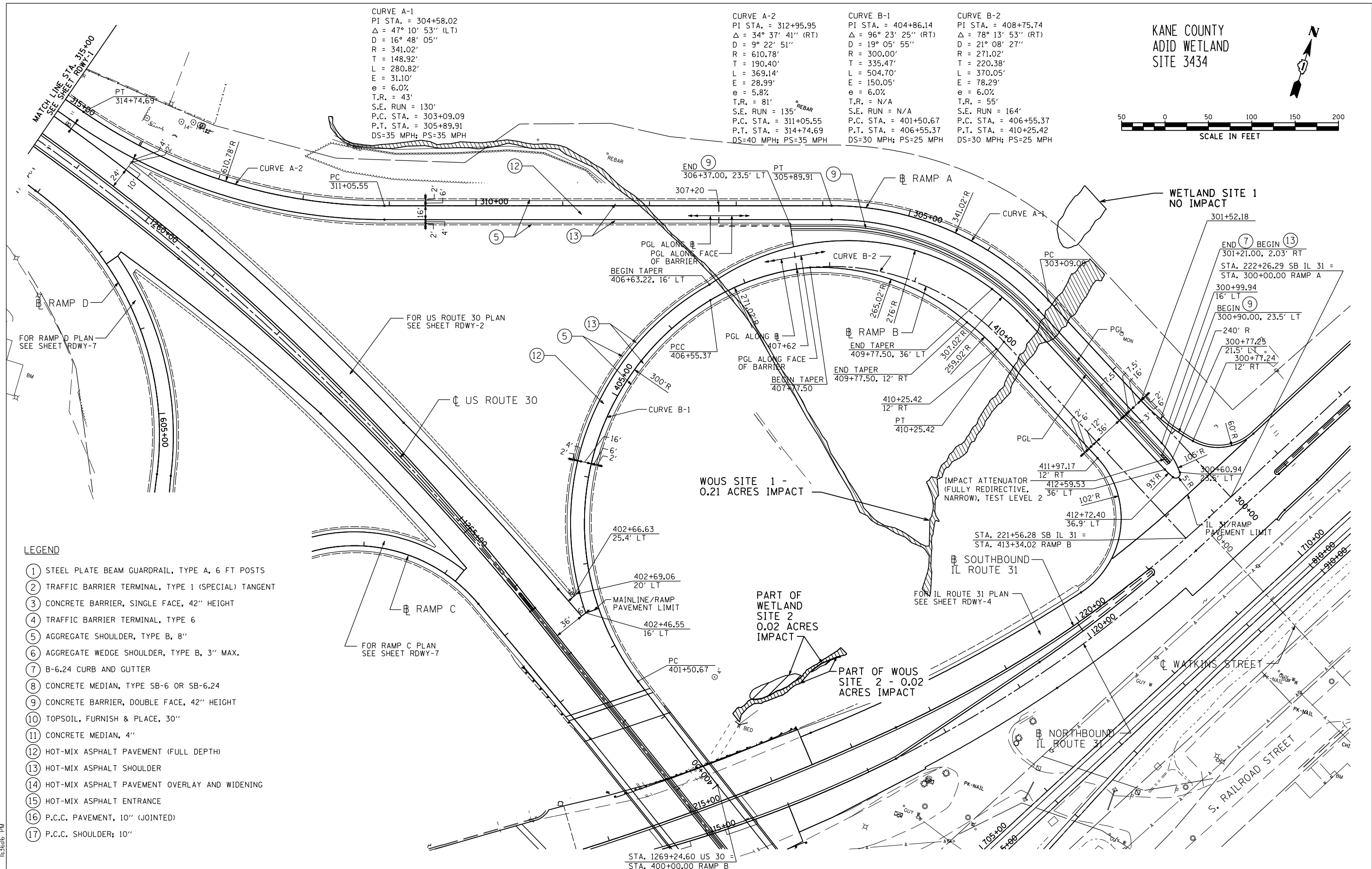


KANE COUNTY
ADID WETLAND
SITE 3434



CURVE A-1 PI STA. = 304+58.02 Δ = 47° 10' 53" (LT) D = 16° 48' 05" R = 341.02' T = 148.92' L = 280.82' E = 31.10' e = 6.0% T.R. = 43' S.E. RUN = 130' P.C. STA. = 303+09.09 P.T. STA. = 305+89.91 DS=35 MPH; PS=35 MPH	CURVE A-2 PI STA. = 312+95.95 Δ = 34° 37' 41" (RT) D = 9° 22' 51" R = 610.78' T = 190.40' L = 369.14' E = 28.99' e = 5.8% T.R. = 81' S.E. RUN = 135' P.C. STA. = 311+05.55 P.T. STA. = 314+74.69 DS=40 MPH; PS=35 MPH	CURVE B-1 PI STA. = 404+86.14 Δ = 96° 23' 25" (RT) D = 19° 05' 55" R = 300.00' T = 335.47' L = 504.70' E = 150.05' e = 6.0% T.R. = N/A S.E. RUN = N/A P.C. STA. = 401+50.67 P.T. STA. = 406+55.37 DS=30 MPH; PS=25 MPH	CURVE B-2 PI STA. = 408+75.74 Δ = 78° 13' 53" (RT) D = 21° 08' 27" R = 271.02' T = 220.38' L = 370.05' E = 78.29' e = 6.0% T.R. = 55' S.E. RUN = 164' P.C. STA. = 406+55.37 P.T. STA. = 410+25.42 DS=30 MPH; PS=25 MPH
--	---	--	--



- LEGEND**
- ① STEEL PLATE BEAM GUARDRAIL, TYPE A, 6 FT POSTS
 - ② TRAFFIC BARRIER TERMINAL, TYPE 1 (SPECIAL) TANGENT
 - ③ CONCRETE BARRIER, SINGLE FACE, 42" HEIGHT
 - ④ TRAFFIC BARRIER TERMINAL, TYPE 6
 - ⑤ AGGREGATE SHOULDER, TYPE B, 8'
 - ⑥ AGGREGATE WEDGE SHOULDER, TYPE B, 3" MAX.
 - ⑦ B-6.24 CURB AND GUTTER
 - ⑧ CONCRETE MEDIAN, TYPE SB-6 OR SB-6.24
 - ⑨ CONCRETE BARRIER, DOUBLE FACE, 42" HEIGHT
 - ⑩ TOPSOIL, FURNISH & PLACE, 30"
 - ⑪ CONCRETE MEDIAN, 4"
 - ⑫ HOT-MIX ASPHALT PAVEMENT (FULL DEPTH)
 - ⑬ HOT-MIX ASPHALT SHOULDER
 - ⑭ HOT-MIX ASPHALT PAVEMENT OVERLAY AND WIDENING
 - ⑮ HOT-MIX ASPHALT ENTRANCE
 - ⑯ P.C.C. PAVEMENT, 10" (JOINTED)
 - ⑰ P.C.C. SHOULDER, 10"

5/15/2012 11:36:16 PM

USER NAME = 1654	DESIGNED - JWB	REVISED -
	DRAWN - JWB	REVISED -
PLOT SCALE = 100.0000' / IN.	CHECKED - RS	REVISED -
PLOT DATE = 5/15/2012	DATE - 05/11/2012	REVISED -

**STATE OF ILLINOIS
DEPARTMENT OF TRANSPORTATION**

U.S. ROUTE 30 AT IL ROUTE 31 ROADWAY PLAN - RAMP A AND RAMP B	
SCALE: 1"=50'	SHEET NO. RDWY-6 OF 7
RAMP A) STA. 300+00 TO STA. 315+00	RAMP B) STA. 400+00 TO STA. 413+34.02

F.A.P. RTE.	SECTION	COUNTY	TOTAL SHEETS	SHEET NO.
349	(10 & 11 VB) R-3	KANE AND KENDALL	507	78
CONTRACT NO. 60133			ILLINOIS FED. AID PROJECT	