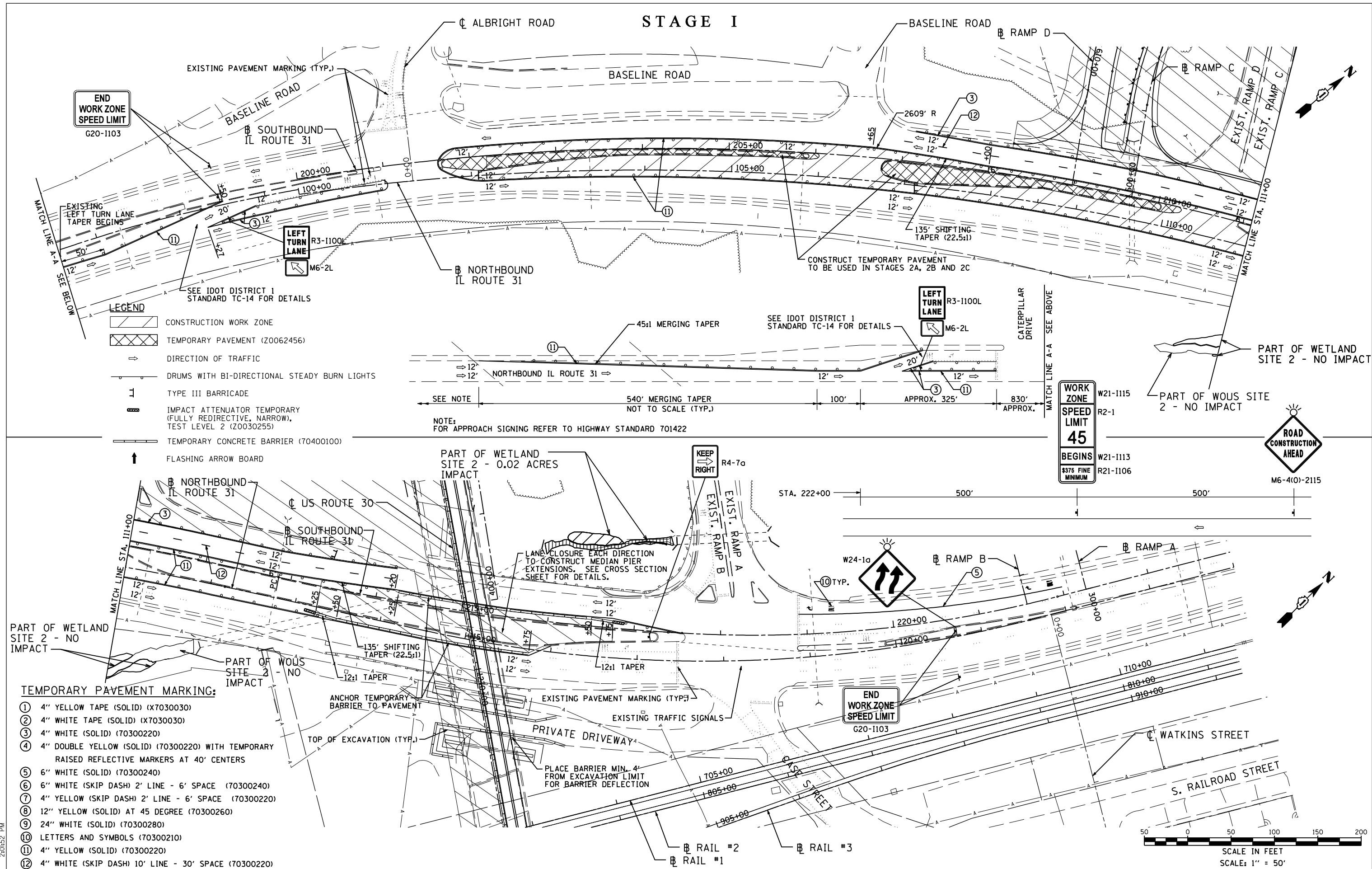


# STAGE I



END WORK ZONE SPEED LIMIT  
G20-1103

**LEGEND**

- CONSTRUCTION WORK ZONE
- TEMPORARY PAVEMENT (Z0062456)
- DIRECTION OF TRAFFIC
- DRUMS WITH BI-DIRECTIONAL STEADY BURN LIGHTS
- TYPE III BARRICADE
- IMPACT ATTENUATOR TEMPORARY (FULLY REDIRECTIVE, NARROW), TEST LEVEL 2 (Z0030255)
- TEMPORARY CONCRETE BARRIER (70400100)
- FLASHING ARROW BOARD

NOTE: FOR APPROACH SIGNING REFER TO HIGHWAY STANDARD 701422

WORK ZONE SPEED LIMIT 45  
BEGINS W21-1113 R2-1  
\$375 FINE MINIMUM  
W21-1115 R2-1  
W21-1106 R2-1

ROAD CONSTRUCTION AHEAD

**TEMPORARY PAVEMENT MARKING:**

- ① 4" YELLOW TAPE (SOLID) (X7030030)
- ② 4" WHITE TAPE (SOLID) (X7030030)
- ③ 4" WHITE (SOLID) (70300220)
- ④ 4" DOUBLE YELLOW (SOLID) (70300220) WITH TEMPORARY RAISED REFLECTIVE MARKERS AT 40' CENTERS
- ⑤ 6" WHITE (SOLID) (70300240)
- ⑥ 6" WHITE (SKIP DASH) 2' LINE - 6' SPACE (70300240)
- ⑦ 4" YELLOW (SKIP DASH) 2' LINE - 6' SPACE (70300220)
- ⑧ 12" YELLOW (SOLID) AT 45 DEGREE (70300260)
- ⑨ 24" WHITE (SOLID) (70300280)
- ⑩ LETTERS AND SYMBOLS (70300210)
- ⑪ 4" YELLOW (SOLID) (70300220)
- ⑫ 4" WHITE (SKIP DASH) 10' LINE - 30' SPACE (70300220)

STATE OF ILLINOIS  
DEPARTMENT OF TRANSPORTATION

U.S. ROUTE 30 AT IL ROUTE 31  
SUGGESTED STAGING AND TRAFFIC CONTROL - STAGE 1  
IL ROUTE 31

F.A.P. RTE.	SECTION	COUNTY	TOTAL SHEETS	SHEET NO.
349	(10 & 11 VB) R-3		507	92
KANE AND KENDALL			CONTRACT NO. 60133	
ILLINOIS FED. AID PROJECT				

P:\Jobs\2010\20103003\cadd\site\vgd\00\060133-sht+mot-SI-03.dgn  
 8/8/2012 2:01:52 PM