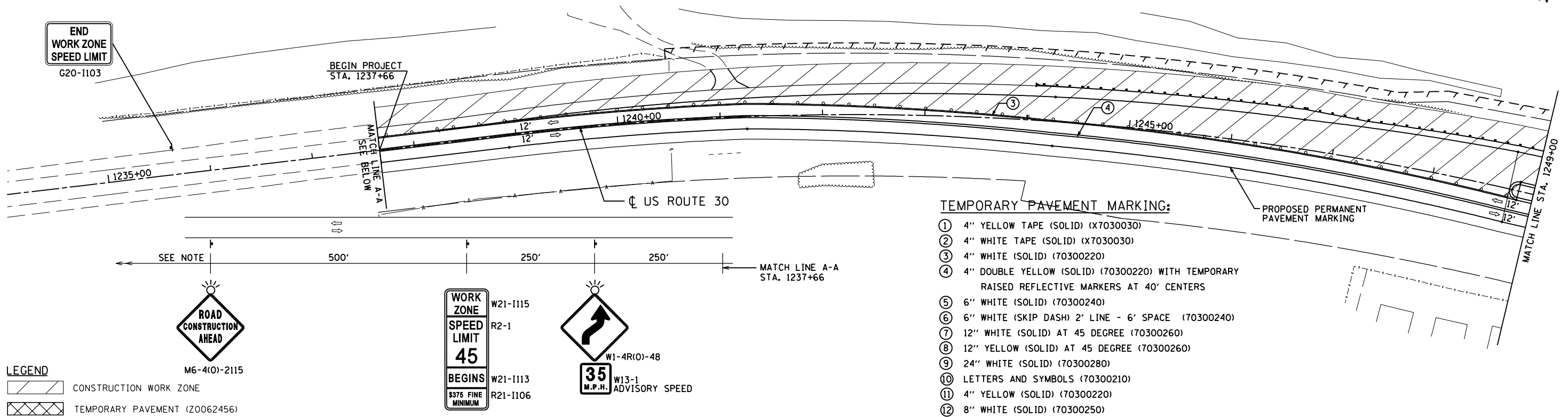
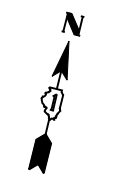


STAGE II

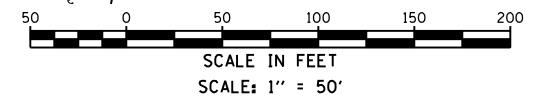
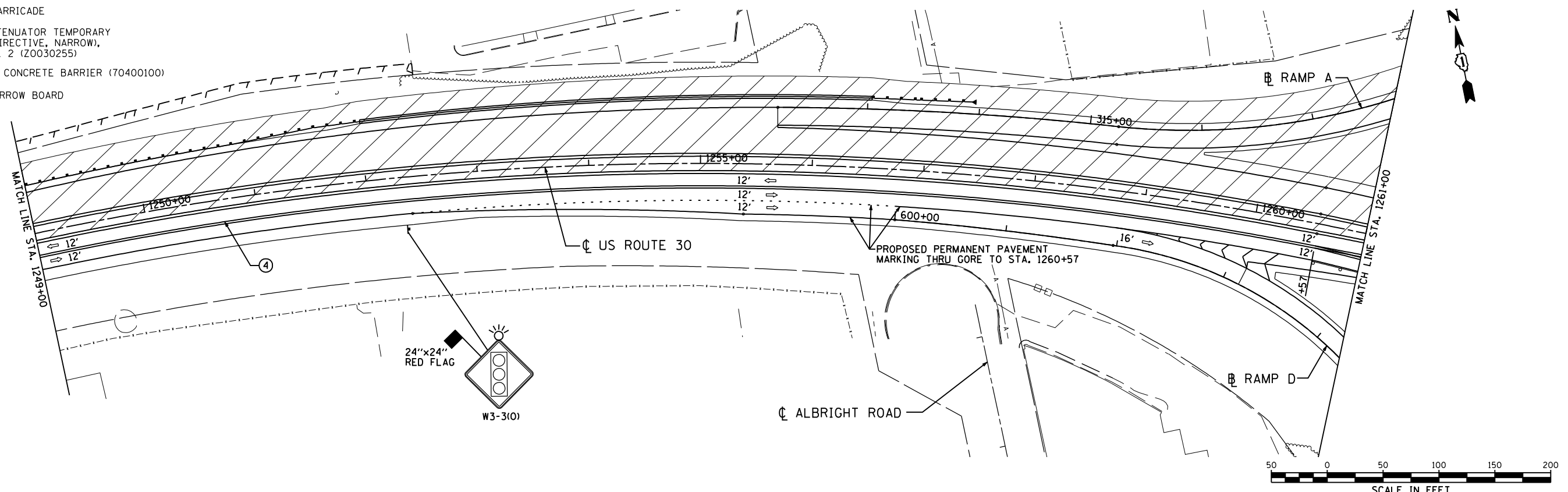
NOTE:

FOR APPROACH SIGNING WHERE FLAGGERS ARE NEEDED TO STOP TRAFFIC FOR SHORT DURATIONS WHILE WORK ENCROACHES UPON THE LANE(S) OPEN TO TRAFFIC, FOLLOW IDOT HIGHWAY STANDARD 701326



- TEMPORARY PAVEMENT MARKING:**
- ① 4" YELLOW TAPE (SOLID) (X7030030)
 - ② 4" WHITE TAPE (SOLID) (X7030030)
 - ③ 4" WHITE (SOLID) (70300220)
 - ④ 4" DOUBLE YELLOW (SOLID) (70300220) WITH TEMPORARY RAISED REFLECTIVE MARKERS AT 40' CENTERS
 - ⑤ 6" WHITE (SOLID) (70300240)
 - ⑥ 6" WHITE (SKIP DASH) 2' LINE - 6' SPACE (70300240)
 - ⑦ 12" WHITE (SOLID) AT 45 DEGREE (70300260)
 - ⑧ 12" YELLOW (SOLID) AT 45 DEGREE (70300260)
 - ⑨ 24" WHITE (SOLID) (70300280)
 - ⑩ LETTERS AND SYMBOLS (70300210)
 - ⑪ 4" YELLOW (SOLID) (70300220)
 - ⑫ 8" WHITE (SOLID) (70300250)

- LEGEND**
- CONSTRUCTION WORK ZONE
 - TEMPORARY PAVEMENT (Z0062456)
 - DIRECTION OF TRAFFIC
 - DRUMS WITH BI-DIRECTIONAL STEADY BURN LIGHTS
 - TYPE III BARRICADE
 - IMPACT ATTENUATOR TEMPORARY (FULLY REDIRECTIVE, NARROW, TEST LEVEL 2 (Z0030255))
 - TEMPORARY CONCRETE BARRIER (70400100)
 - FLASHING ARROW BOARD



P:\Jobs\2010\20103003\cd\site\vdgn\00\0160133-sht+mot+52-0.dgn
 8/8/2012 2:02:29 PM

USER NAME = 1654	DESIGNED - JWB	REVISED -
	DRAWN - JWB	REVISED -
PLOT SCALE = 100.0000' / IN.	CHECKED - RS	REVISED -
PLOT DATE = 8/8/2012	DATE - 06/15/2012	REVISED -

**STATE OF ILLINOIS
DEPARTMENT OF TRANSPORTATION**

**U.S. ROUTE 30 AT IL ROUTE 31
SUGGESTED STAGING AND TRAFFIC CONTROL - STAGE 2
U.S. ROUTE 30**

SCALE: 1"=50' SHEET NO. MOT-13 OF 27 STA. 1234+00 TO STA. 1261+00

F.A.P. RTE.	SECTION	COUNTY	TOTAL SHEETS	SHEET NO.
349	(10 & 11 VB) R-3	*	507	100
* KANE AND KENDALL			CONTRACT NO. 60133	
ILLINOIS FED. AID PROJECT				