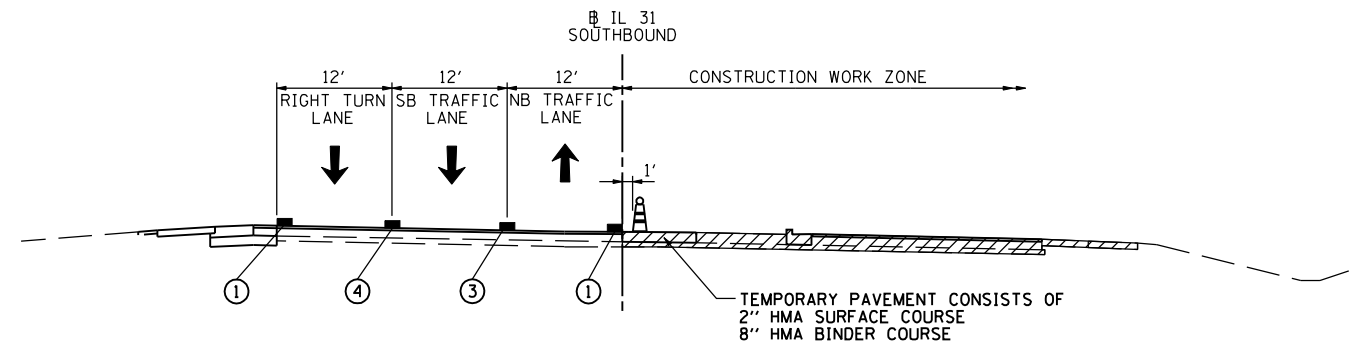


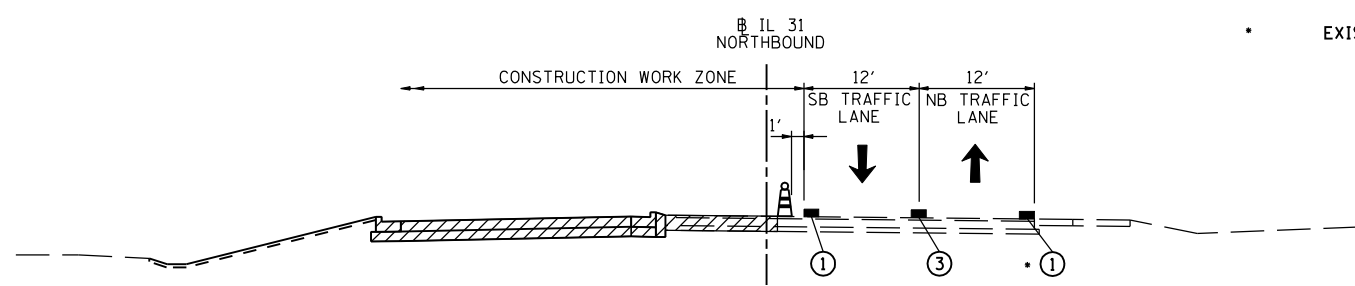
MAINTENANCE OF TRAFFIC - STAGE 2A
IL 31
 STA. 104+00
 (LOOKING NORTH)



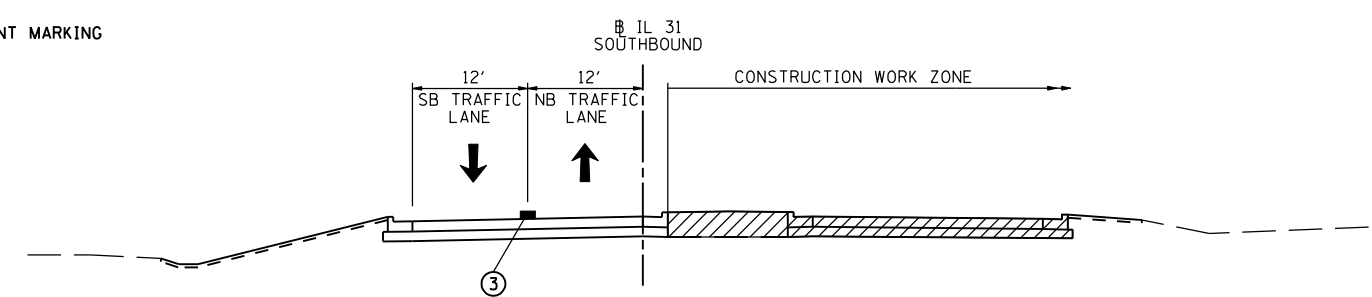
MAINTENANCE OF TRAFFIC - STAGE 2B
IL 31
 STA. 104+00
 (LOOKING NORTH)

LEGEND:

- AREA OF PROPOSED CONSTRUCTION
- DRUM WITH BIDIRECTIONAL STEADY BURN LIGHT ON 2-LANE ROADWAYS AND MONODIRECTIONAL ON MULTILANE ROADWAYS
- DOUBLE VERTICAL PANEL (ONE PANEL ON EACH SIDE OF POST) WITH BIDIRECTIONAL STEADY BURN LIGHT
- TEMPORARY CONCRETE BARRIER WITH TYPE C MARKERS PER STANDARD 704001
- PAVEMENT MARKING:
 - ① 4" SOLID WHITE LINE
 - ② 4" SOLID YELLOW LINE
 - ③ 2-4" SOLID YELLOW LINE @ 11" C-C WITH YELLOW TEMPORARY RAISED REFLECTIVE PAVEMENT MARKERS AT 40' CENTERS (TYP.)
 - ④ 6" SOLID WHITE LINE
 - ⑤ 4" WHITE (SKIP DASH) 10' LINE - 30' SPACE
 - EXISTING PAVEMENT MARKING



MAINTENANCE OF TRAFFIC - STAGE 2A
IL 31
 STA. 128+00
 (LOOKING NORTH)



MAINTENANCE OF TRAFFIC - STAGE 2B
IL 31
 STA. 128+00
 (LOOKING NORTH)

P:\Jobs\2010\20103003\cadd\sheet\mot+typical-03.dgn
 8/8/2012 2:02:55 PM

USER NAME = 1654	DESIGNED - JWB	REVISED -
DRAWN - JWB	REVISIONS -	
PLOT SCALE = 20.0000' / IN.	CHECKED - RS	REVISIONS -
PLOT DATE = 8/8/2012	DATE - 06/15/2012	REVISIONS -

F.A.P. RTE.	SECTION	COUNTY	TOTAL SHEETS	SHEET NO.
349	(10 & 11 VB) R-3	*	507	104
* KANE AND KENDALL			CONTRACT NO. 60133	
ILLINOIS FED. AID PROJECT				