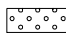




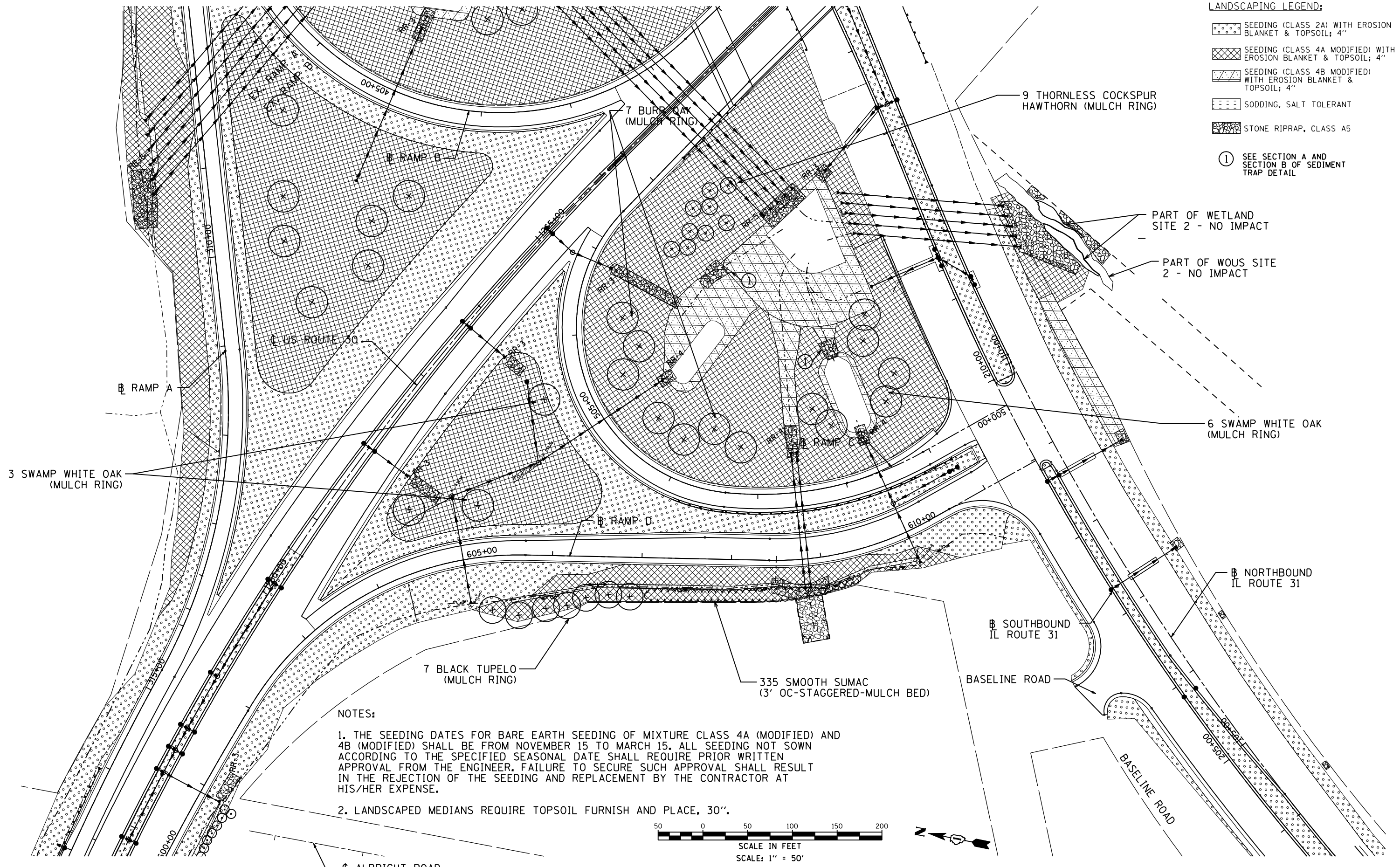
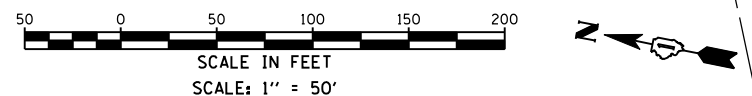


- LANDSCAPING LEGEND:**
-  SEEDING (CLASS 2A) WITH EROSION BLANKET & TOPSOIL; 4"
 -  SEEDING (CLASS 4A MODIFIED) WITH EROSION BLANKET & TOPSOIL; 4"
 -  SEEDING (CLASS 4B MODIFIED) WITH EROSION BLANKET & TOPSOIL; 4"
 -  SODDING, SALT TOLERANT
 -  STONE RIPRAP, CLASS A5
- ① SEE SECTION A AND SECTION B OF SEDIMENT TRAP DETAIL



NOTES:

1. THE SEEDING DATES FOR BARE EARTH SEEDING OF MIXTURE CLASS 4A (MODIFIED) AND 4B (MODIFIED) SHALL BE FROM NOVEMBER 15 TO MARCH 15. ALL SEEDING NOT SOWN ACCORDING TO THE SPECIFIED SEASONAL DATE SHALL REQUIRE PRIOR WRITTEN APPROVAL FROM THE ENGINEER. FAILURE TO SECURE SUCH APPROVAL SHALL RESULT IN THE REJECTION OF THE SEEDING AND REPLACEMENT BY THE CONTRACTOR AT HIS/HER EXPENSE.
2. LANDSCAPED MEDIANS REQUIRE TOPSOIL FURNISH AND PLACE, 30".



5/16/2012 12:15 AM

USER NAME = 1654	DESIGNED - JWB	REVISED -
	DRAWN - JWB	REVISED -
PLOT SCALE = 100.0000' / IN.	CHECKED - RS	REVISED -
PLOT DATE = 5/16/2012	DATE - 05/11/2012	REVISED -

**STATE OF ILLINOIS
DEPARTMENT OF TRANSPORTATION**

**U.S. ROUTE 30 AT IL ROUTE 31
LANDSCAPING PLAN - RAMP C AND RAMP D**

SCALE: 1"=50' SHEET NO. --

(RAMP C) STA. 500+00 TO STA. 507+52
(RAMP D) STA. 600+00 TO STA. 609+96

F.A.P. RTE.	SECTION	COUNTY	TOTAL SHEETS	SHEET NO.
349	(10 & 11 VB) R-3	-	507	131
KANE AND KENDALL			CONTRACT NO. 60133	
ILLINOIS FED. AID PROJECT				