

PLAN

Existing Structure; S.N. 045-0039 was originally built in 1958 as FA Route 192. Sections 11 VB & 11 VF. In 1974, 1985, 2008 and 2009, structural repairs were performed. In 1985, the deck was completely removed and replaced. The reinforced concrete deck is 7 1/2" deep with two Jersey parapets, no sidewalks and no raised median. The superstructure is 10 spans in 3 units consisting of 10 lines of 36" deep steel wide flange beams. The abutments are reinforced concrete stub on metal shell concrete filled piles. Each pier is reinforced concrete consisting of a cap beam, multiple square columns on a crashwall supported by a continuous spread footing. The bridge is 63'-8" wide out to out, and it is 618'-0 3/4" long back to back abutments. The existing bridge will be used in the proposed construction except that the deck will be removed and replaced, Piers 4 and 5 and all span 5 beams will be removed and replaced, and the bridge will be widened by about 16'-3" on each side. Construction will be performed in three stages while one lane of traffic is maintained in each direction. No Salvage.

Benchmark #9: Chiseled square on north edge of parapet on north side of U.S. Rte. 30 west of west abutment for bridge over S. River Street at Sta. 1279+98.77, Offset 37.04' left, Elevation 656.64.

LEGEND

- - Indicates Scupper, DS-12
- ◆ - Indicates Soil Boring
- ⊠ - Indicates Stone Riprap Class A4
- - Indicates Temporary Sheet Piling
- - Indicates Temporary Soil Retention System
- - Indicates existing Aerial Line
- - Indicates existing Electric Line
- - Indicates existing Gas Line
- - Indicates existing Telephone Line
- - Indicates existing Water Line

NOTES

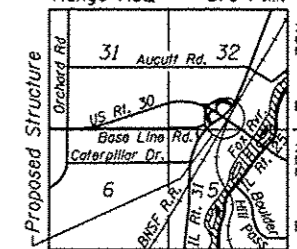
1. No freefall deck drains will be permitted in the spans over the railroad tracks or within 10 feet of cross arms of a railroad pole line.
2. BNSF RR Milepost 40.58 for Tracks 1 and 2 is located approximately at the $\text{\textcircled{C}}$ U.S. Rt. 30.

APPROVED
For Structural Adequacy Only

Le Carl Kuyper
Engineer of Bridges & Structures



Range R8E 3rd P.M.



LOCATION SKETCH

GENERAL PLAN & ELEVATION
U.S. ROUTE 30 OVER
ILLINOIS ROUTE 31 & BNSF RR
FAP ROUTE 349 - SECTION (10 & 11VB)R-3
KANE COUNTY
STATION 1271+16.06
STRUCTURE NO. 045-0039

STATE OF ILLINOIS
DEPARTMENT OF TRANSPORTATION

SHEET NO. 51 OF 116 SHEETS

F.A.P. R.T.E.	SECTION	COUNTY	TOTAL SHEETS	SHEET NO.
349	(10 & 11VB) R-3	KANE	507	222
S.N. 45-0039			CONTRACT NO. 60133	

ILLINOIS FED. AID PROJECT

H:\Jobs\2000\2003\0031\CAD\Structural\dwg\045-0039.Final\00105013-00105014-00105015.dgn
 6/25/2012 9:59:58 AM
 J:\Users\JGAP\Documents\Projects\045-0039\00105013-00105014-00105015.dgn

GR&E
8501 W. Higgins Road, Suite 280
Chicago, Illinois 60631 (773) 399-0112

USER NAME *	DESIGNED - J.J.G. 6/15/2012	REVISED -
PLOT SCALE *	CHECKED - J.A.Z. 6/15/2012	REVISED -
PLOT DATE *	DRAWN - E.E.J. 6/15/2012	REVISED -
	CHECKED - J.J.G. 6/15/2012	REVISED -