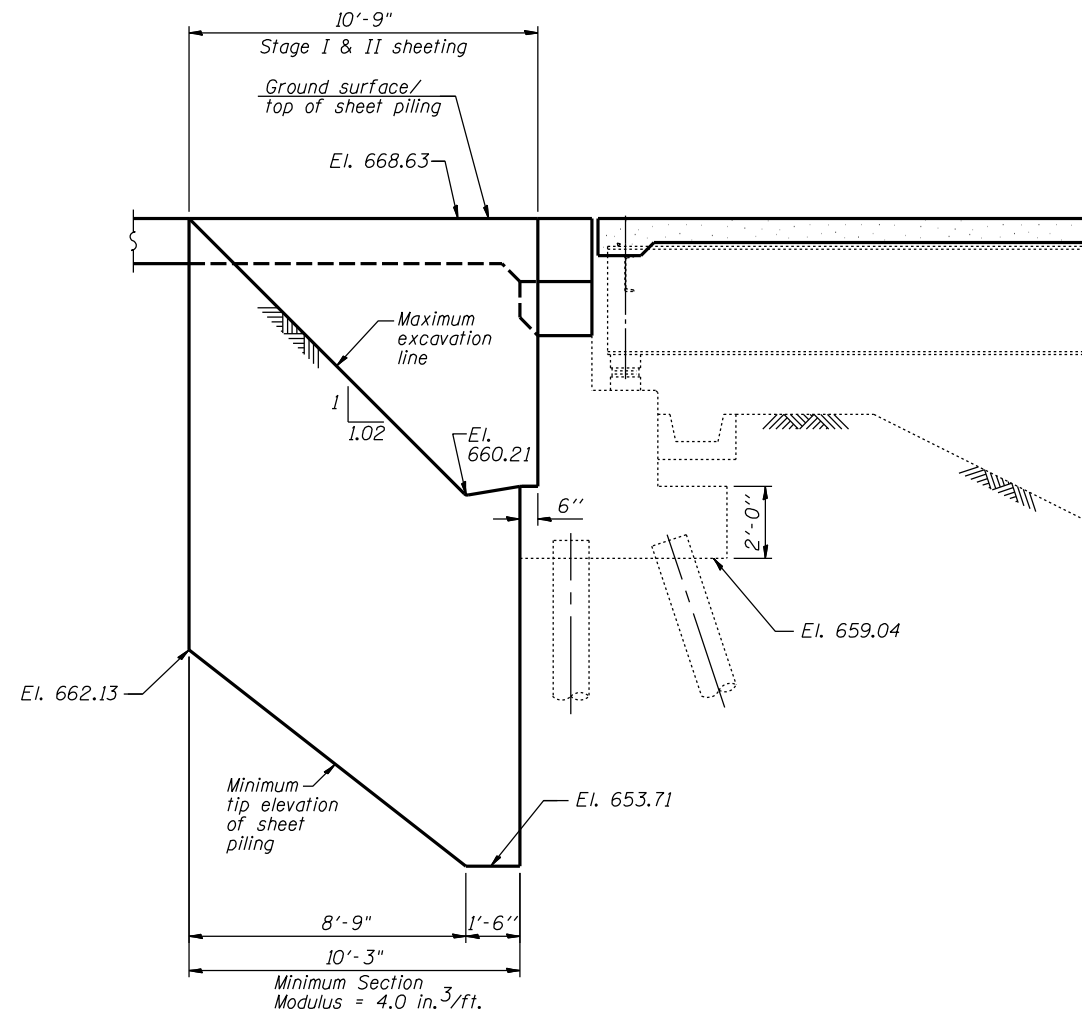
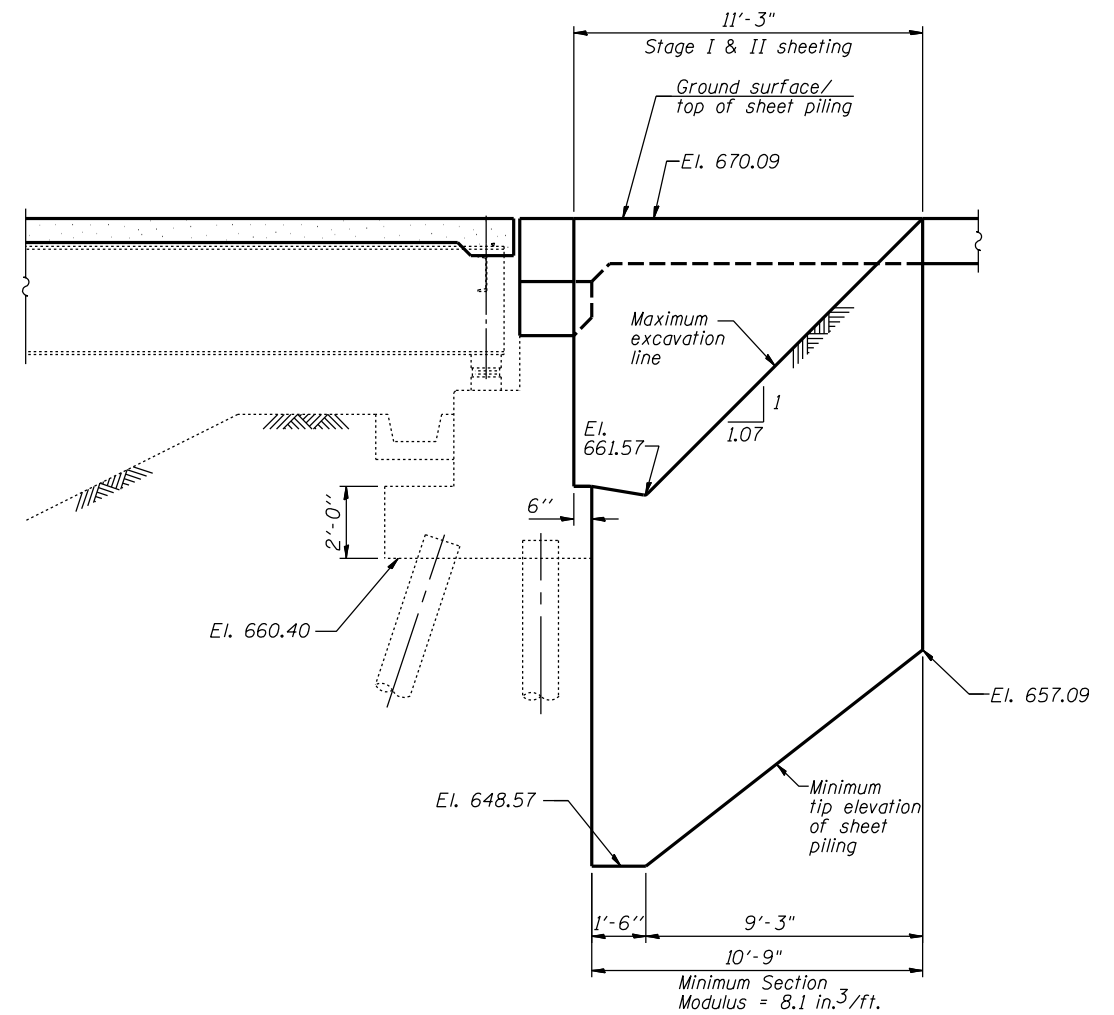


NOTES

1. If the Contractor chooses to alter the temporary cantilevered sheet piling design requirements shown on the plans, a design submittal including plan details and calculations will be required for review and acceptance by the Engineer.
2. The Contractor shall connect the first sheet to the existing abutment wall to ensure stability of sheets driven to top of the existing footing. This connection shall be reviewed and accepted by the Engineer and included in the cost for Temporary Sheet Piling.
3. The temporary sheet piling shall be installed prior to excavation in Stage I. Remove temporary sheet piling after backfilling in Stage II.



**ELEVATION VIEW OF TEMPORARY SHEET PILING
LOOKING SOUTH AT EAST ABUTMENT**



**ELEVATION VIEW OF TEMPORARY SHEET PILING
LOOKING SOUTH AT WEST ABUTMENT**

BILL OF MATERIAL

ITEM	UNIT	QUANTITY
Temporary Sheet Piling	Sq. Ft.	316

P:\1052200\20103003\cad\structural\dgn\045-0039_find\00.DWG\033-e007-temp-sht-piling.dgn
 6/14/2012 6:04:46 PM

USER NAME =	DESIGNED - S.D.H. 6/15/2012	REVISED -
	CHECKED - J.J.G. 6/15/2012	REVISED -
PLOT SCALE =	DRAWN - S.R.K. 6/15/2012	REVISED -
PLOT DATE =	CHECKED - S.D.H. 6/15/2012	REVISED -

F.A.P. RTE.	SECTION	COUNTY	TOTAL SHEETS	SHEET NO.
349	(10 & 11VB) R-3	KANE	507	228
CONTRACT NO. 60133				