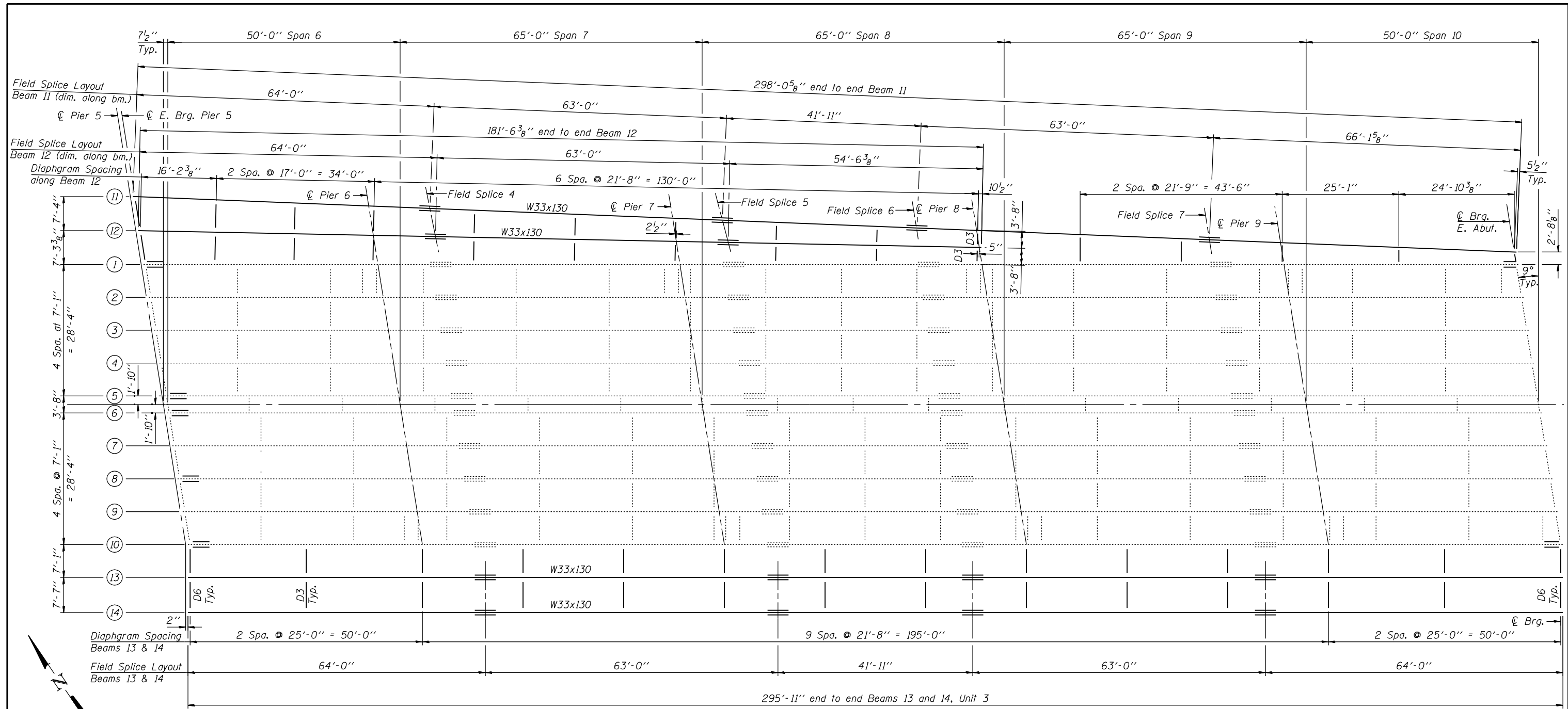


P:\1052010\20103003\cadd\structural\045-0039_framing\00.DWG\033-e044-fp3.dgn
 6/14/2012 6:07:33PM



FRAMING PLAN, UNIT 3

LEGEND

..... Indicates Structural Steel Repair. See sheet S49.

NOTES

1. Work this sheet with Sheets S42, S43 and S45 thru S50.
2. Unit 3 interior diaphragms adjacent to Beam 12 are perpendicular to Beam 12. All other new Unit 3 interior diaphragms are perpendicular to the ϕ structure.



USER NAME =	DESIGNED - E.E.J. 6/15/2012	REVISED -
	CHECKED - J.Z. 6/15/2012	REVISED -
PLOT SCALE =	DRAWN - E.E.J. 6/15/2012	REVISED -
PLOT DATE =	CHECKED - J.Z. 6/15/2012	REVISED -

STATE OF ILLINOIS
DEPARTMENT OF TRANSPORTATION

FRAMING PLAN, UNIT 3
STRUCTURE NO. 045-0039

SHEET NO. S44 OF 116 SHEETS

F.A.P. RTE.	SECTION	COUNTY	TOTAL SHEETS	SHEET NO.
349	(10 & 11VB) R-3	KANE	507	265
CONTRACT NO. 60133				
ILLINOIS FED. AID PROJECT				