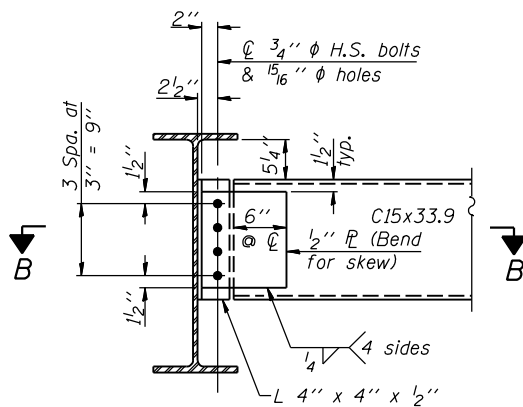
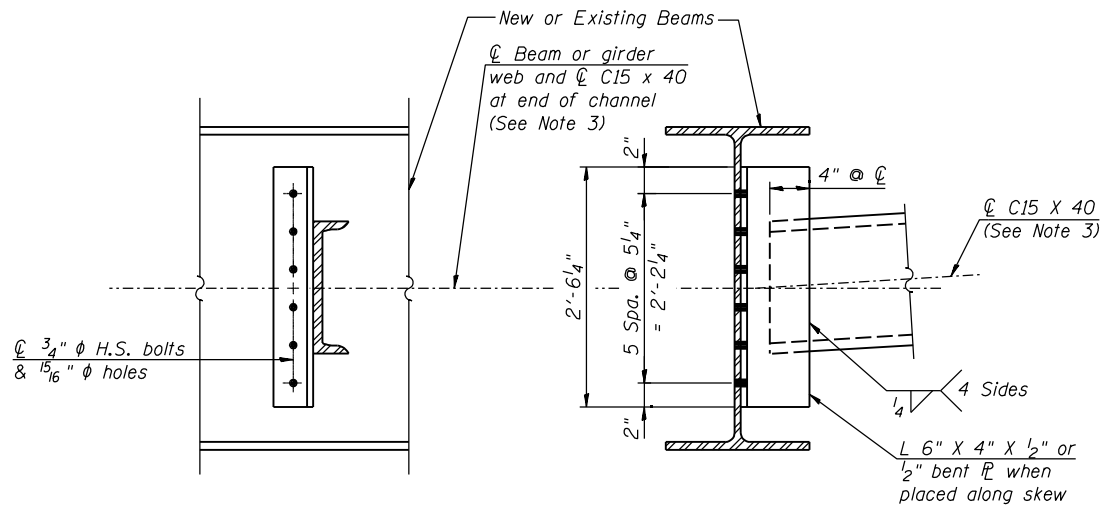


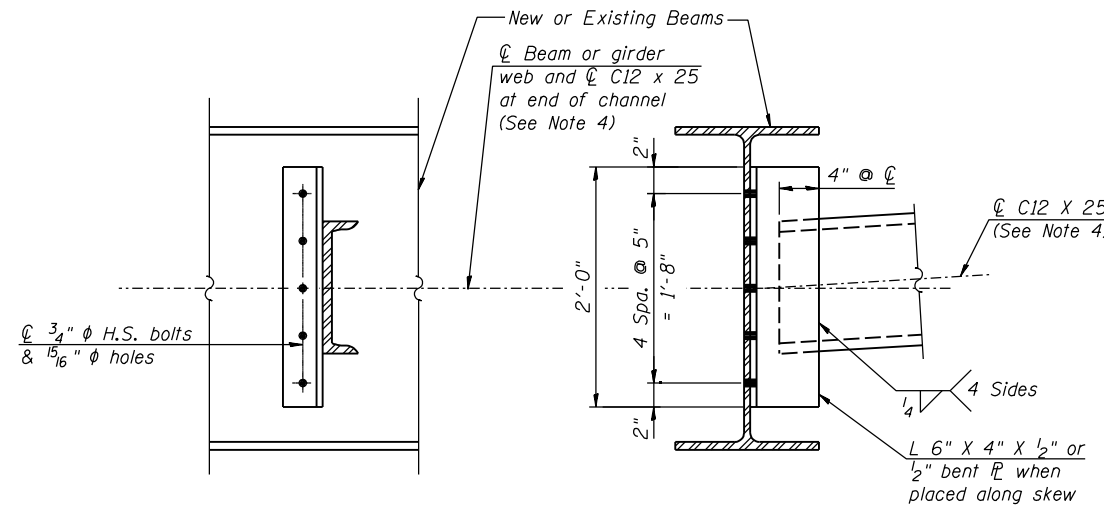
SECTION B-B



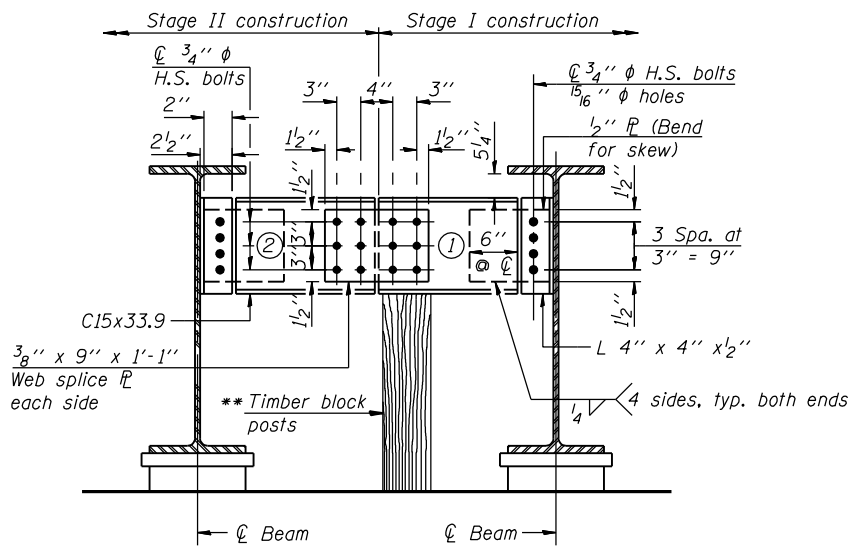
END DIAPHRAGM-D1  
(24 Required)



INTERIOR DIAPHRAGM - D2  
(52 Required)



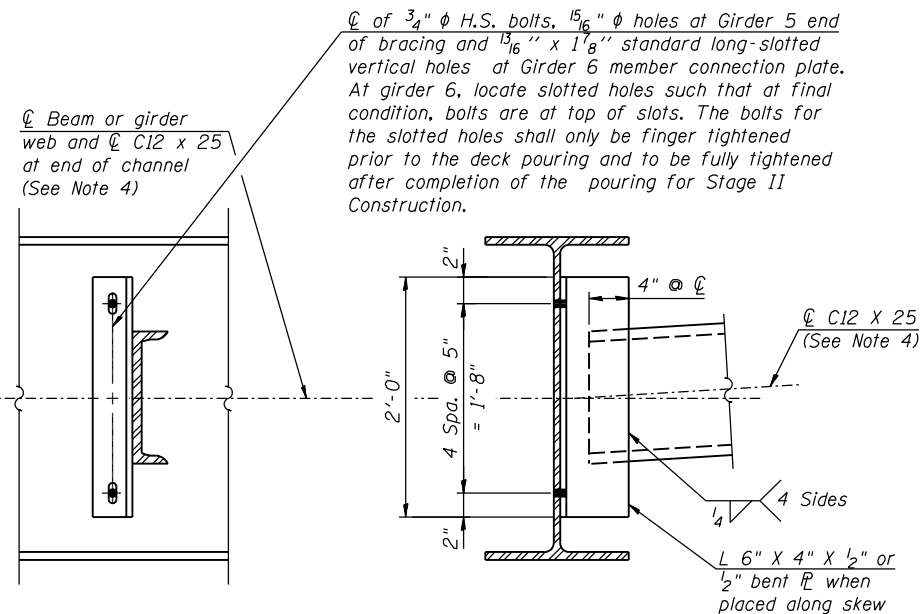
INTERIOR DIAPHRAGM - D3  
(58 Required)



END DIAPHRAGM-D4  
(2 Required)

END DIAPHRAGM STAGE CONSTRUCTION SEQUENCE

- 1.) Order diaphragm in two sections.
- 2.) Attach section ① of diaphragm to beam
- 3.) Place timber block posts between section ① of diaphragm and abutment bearing section.
- 4.) Attach section ② of diaphragm to both beam and section ① of diaphragm during stage II construction with splice plates.
- 5.) Remove timber block posts.



INTERIOR DIAPHRAGM - D5  
(1 Required)

NOTES

1. Work this sheet with Sheets S47, S49 and S50.
2. Two hardened washers are required for each set of oversized holes.
3. Alternate C15x50 diaphragm channels are permitted for D2 diaphragms to facilitate material acquisition. Calculated weight of structural steel is based on C15x40. The alternate, if utilized, shall be provided at no extra cost to the Department.
4. Alternate C12x30 diaphragm channels are permitted for D3 and D5 diaphragms to facilitate material acquisition. Calculated weight of structural steel is based on C12x25. The alternate, if utilized, shall be provided at no extra cost to the Department.
5. 5/16" diameter holes shall be field drilled into existing Beams 1 & 10 to connect angles for Diaphragms D2 & D3.

P:\10522010\20103003\cadd\structural\vgm\045-0039\_final\00\DI60133-e048-dphm-dt.dgn  
 6/14/2012 6:07:45 PM

USER NAME =	DESIGNED - J.Z. 6/15/2012	REVISED -
	CHECKED - J.A.Z. 6/15/2012	REVISED -
PLOT SCALE =	DRAWN - E.E.J. 6/15/2012	REVISED -
PLOT DATE =	CHECKED - J.Z. 6/15/2012	REVISED -

F.A.P. RTE.	SECTION	COUNTY	TOTAL SHEETS	SHEET NO.
349	(10 & 11VB) R-3	KANE	507	269
CONTRACT NO. 60133				