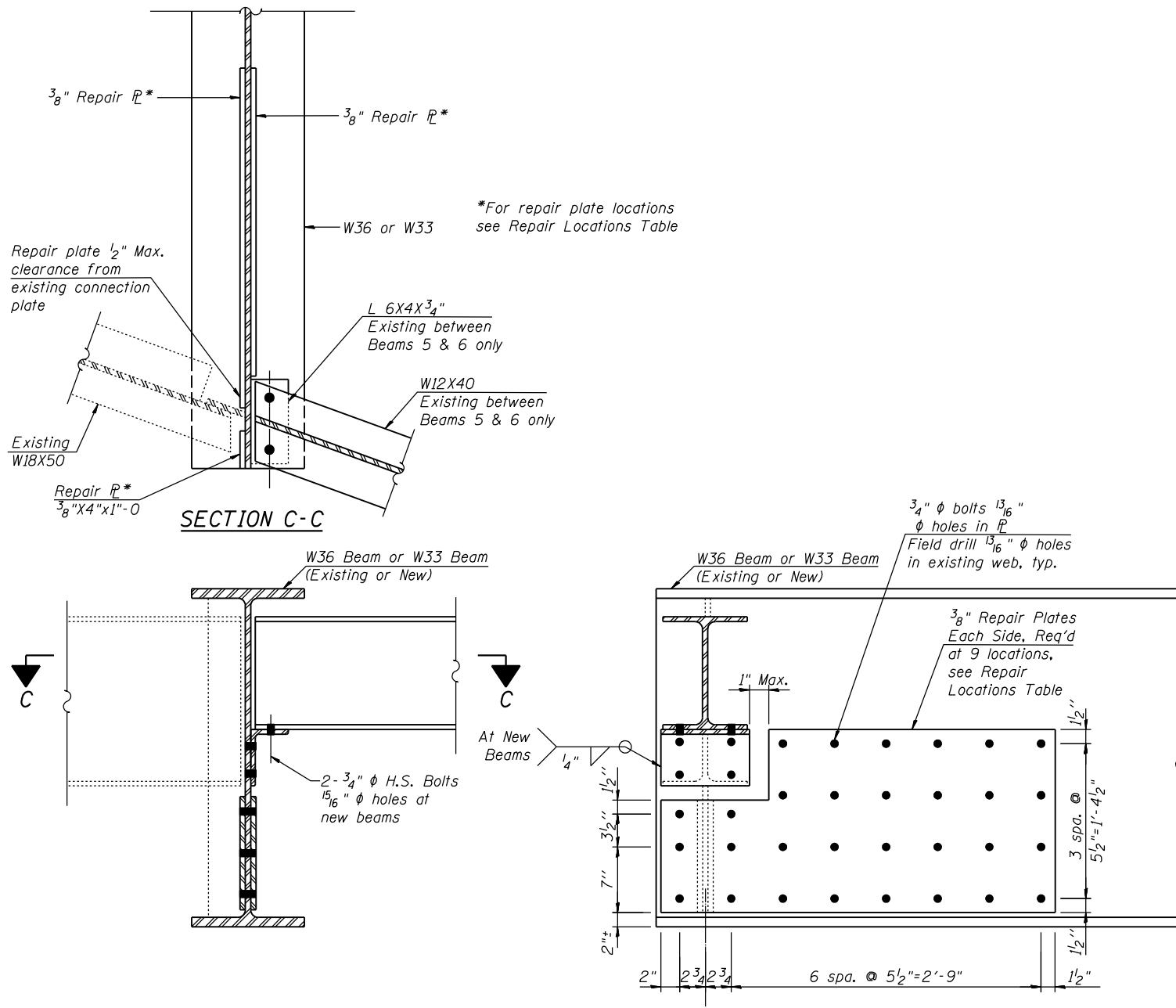


P:\105200\20103003\cadd\structural\dgn\045-0039_fina\00.D160133-e048-bm-rp-dt.dgn
 6/14/2012 6:07:49 PM

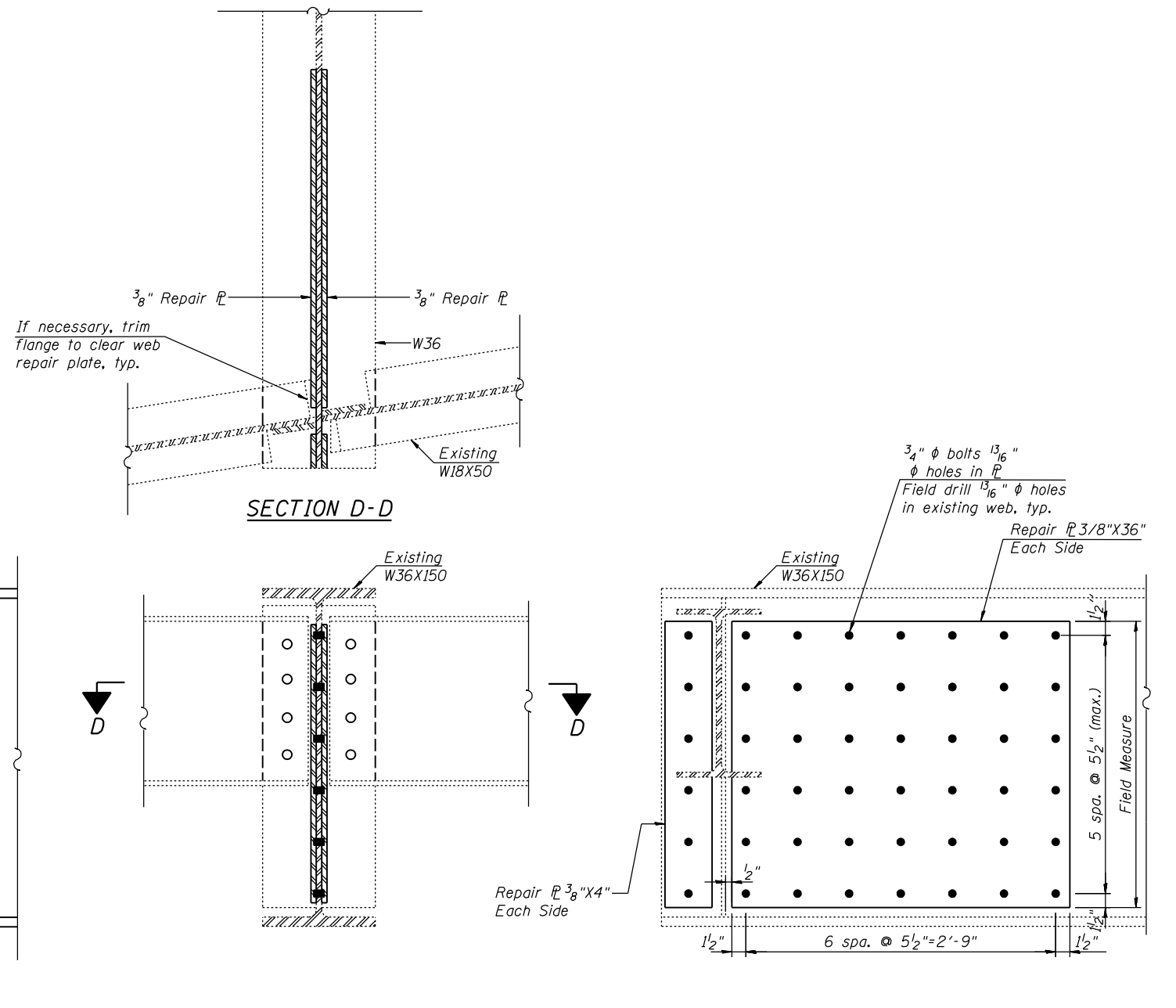


END DIAPHRAGM-D6 & BEAM REPAIR

(15 Diaphragms Required)
(9 Repairs Required)

REPAIR LOCATIONS

Location	Span	Beams
Pier 4	4	1, 5 & 10
Pier 5	6	1, 5, 6 & 10
E. Abut.	10	1 & 10



BEAM 8 REPAIR @ PIER 5

BILL OF MATERIAL

Item	Unit	Quantity
Structural Steel Repair	Pound	1660

NOTES

1. Work this sheet with Sheets S42 thru S48 and S50.
2. Contractor shall field verify dimensions at repair plates.
3. Two hardened washers are required for each set of oversized holes.
4. Diaphragms, connection angles and repair plates shall be AASHTO M270 Grade 36.