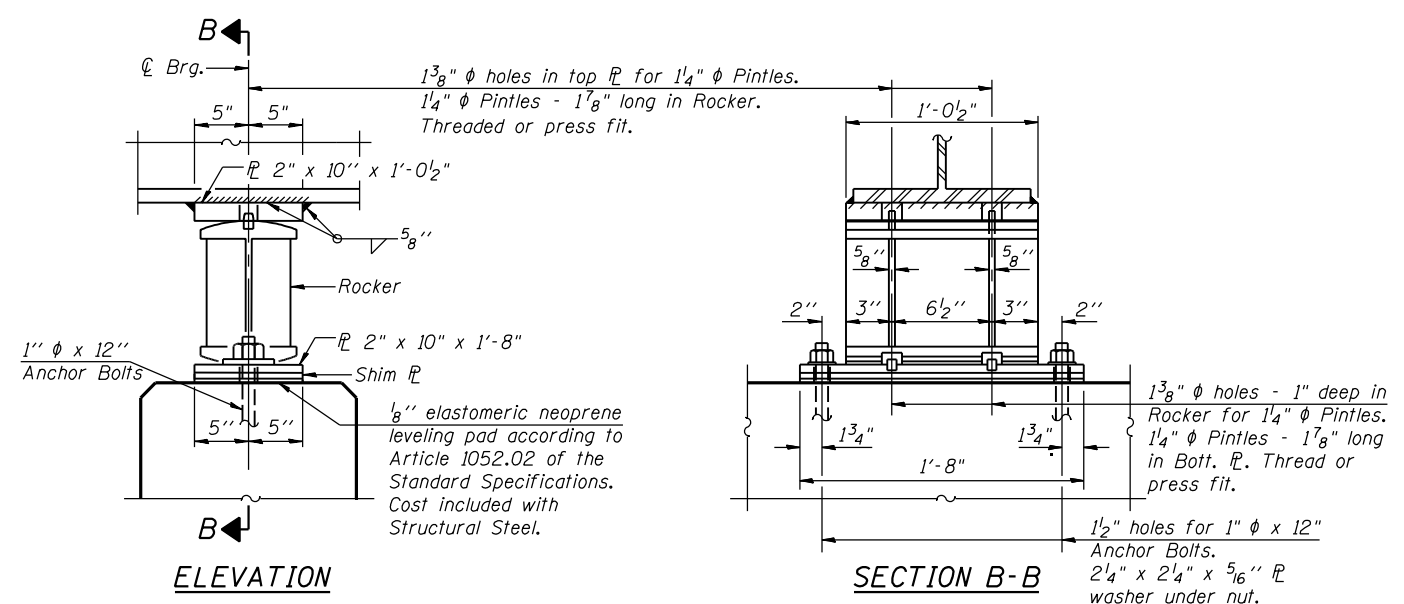


ELEVATION

SECTION A-A

**TYPE 'G-X' BEARINGS AT EXISTING BEAMS 1 & 10
(STEEL ROCKER EXPANSION BEARING)**

(6 Required)

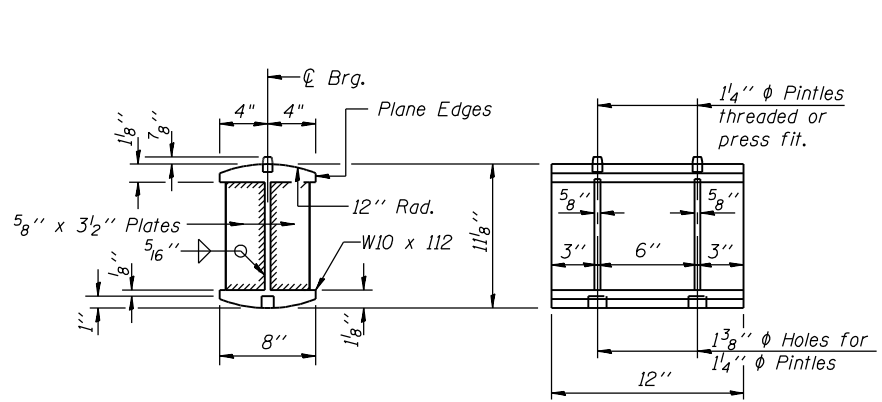


ELEVATION

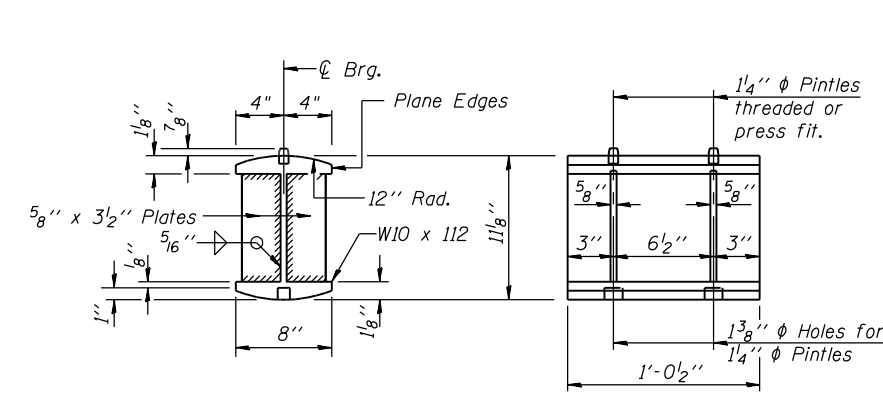
SECTION B-B

**TYPE 'G-N' BEARINGS AT NEW BEAMS 11 THRU 14
(STEEL ROCKER EXPANSION BEARING)**

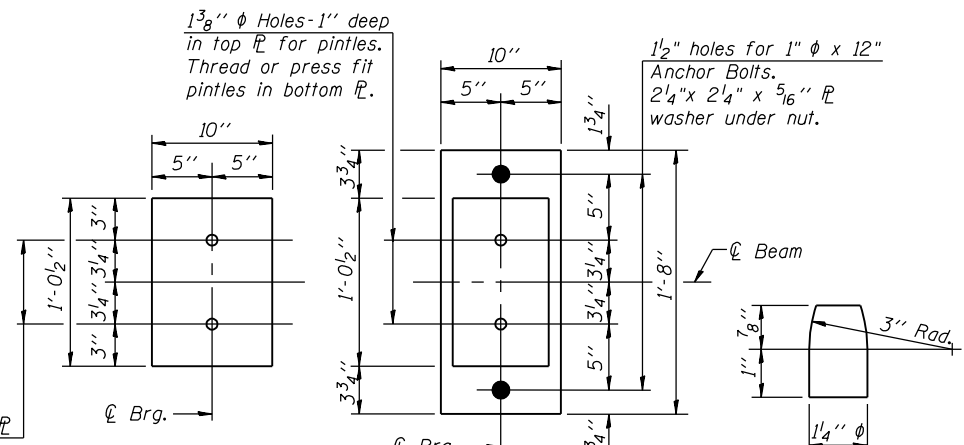
(11 Required)



DETAIL OF ROCKER



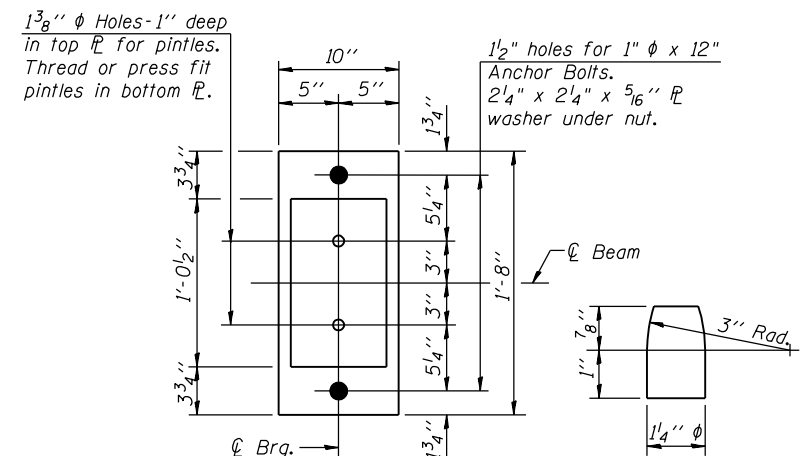
DETAIL OF ROCKER



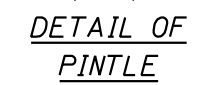
TOP PLATE

BOTTOM PLATE

DETAIL OF PINTLE



BOTTOM PLATE



DETAIL OF PINTLE

BILL OF MATERIAL

Item	Unit	Total
Anchor Bolts, 1"	Each	34

NOTES

- Anchor bolts shall be ASTM F1554 all-thread (or an Engineer-approved alternate material) of the grade(s) and diameter(s) specified. ASTM A307 Grade C anchor bolts may be used in lieu of ASTM F1554 Grade 36 (Fy=36ksi). The corresponding specified grade of AASHTO M314 anchor bolts may be used in lieu of ASTM F1554.
- Drilled and set anchor bolts shall be installed according to Article 521.06 of the Standard Specifications.
- The structural steel plates of the Bearing Assembly shall conform to the requirements of AASHTO M 270 Grade 50.
- Replace the existing rocker bearings at Beams 1 & 10 except for the top plates of the existing assemblies.
- Two 1/8 in. adjusting shims shall be provided for each bearing in addition to all other plates or shims and placed as shown on bearing details.
- Type '-X' refers to rocker bearings at existing beams, while Type '-N' refers to rocker bearings at new beams. See Key Bridge Bearing Types on Sheet S51 for Locations of Bearing Type 'G'.

P:\10522010\20103003\cadd\structural\vdgn\045-0039_find\00\DI60133-e055-rckr-b-g-g.dgn
 6/14/2012 6:08:16 PM

USER NAME =	DESIGNED - J.Z. 6/15/2012	REVISED -
PLOT SCALE =	CHECKED - E.E.J. 6/15/2012	REVISED -
PLOT DATE =	DRAWN - E.U.B. 6/15/2012	REVISED -
	CHECKED - J.Z. 6/15/2012	REVISED -

F.A.P. RTE.	SECTION	COUNTY	TOTAL SHEETS	SHEET NO.
349	(10 & 11VB) R-3	KANE	507	276
CONTRACT NO. 60133			ILLINOIS FED. AID PROJECT	