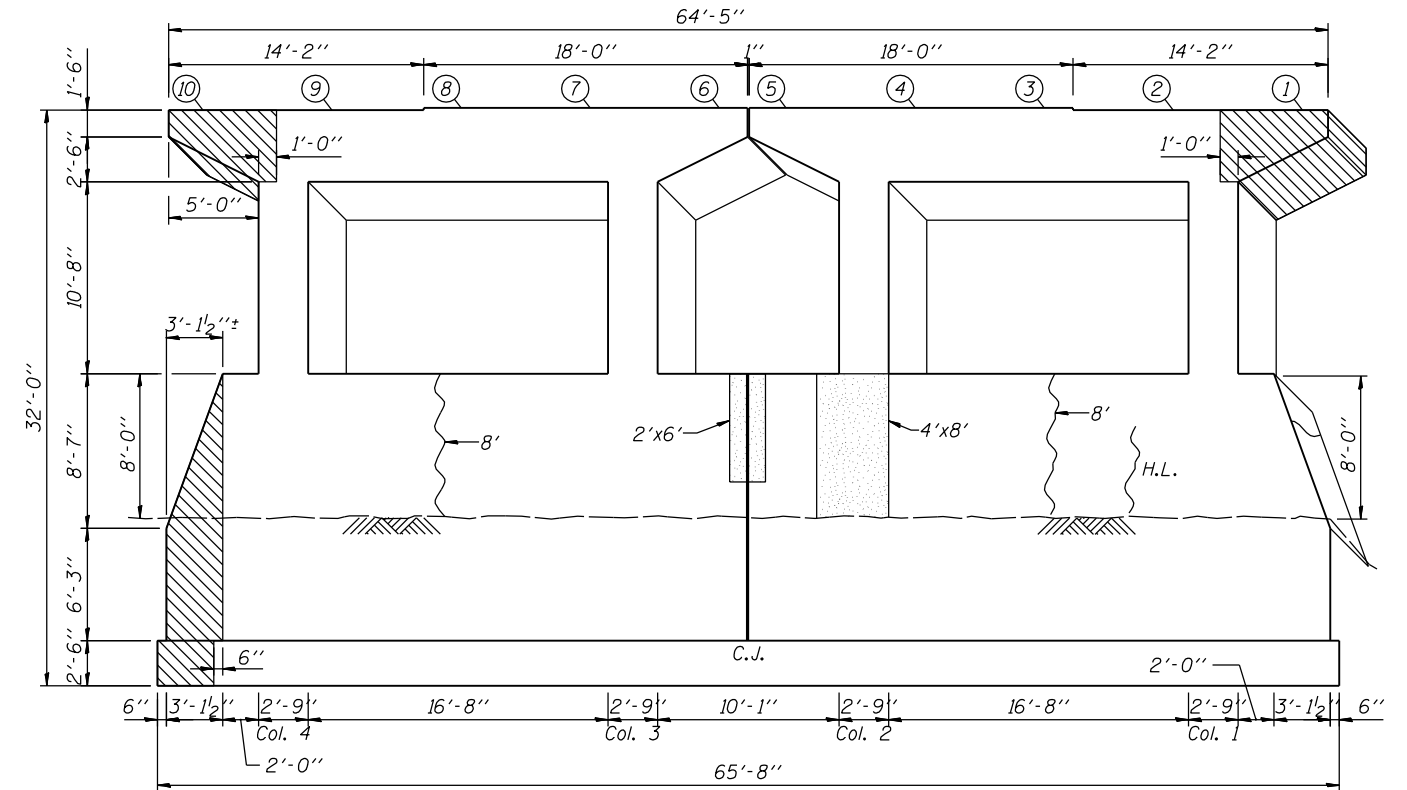


**PIER 6 WEST FACE  
LOOKING EAST**



**PIER 6 EAST FACE  
LOOKING WEST**

**BILL OF MATERIAL**

Item	Unit	Quantity
Concrete Removal	cu. yd.	8.8
Epoxy Crack Injection	ft.	40.0
Structural Repair of Concrete (Depth less than or equal to 5")	sq. ft.	41.8
Structural Repair of Concrete (Depth greater than 5")	sq. ft.	2.2

**LEGEND**

- Concrete Removal
- Structural Repair of Concrete (Depth Equal to or Less than 5")
- Epoxy Crack Injection
- Hairline Crack, no repair required

**NOTES:**

1. Existing reinforcement shall be cleaned and incorporated into the new construction. Cost included with Concrete Removal.
2. Quantities for Structural Repair of Concrete are approximate. Quantity of Structural Repair of Concrete (Depth Equal to or less than 5") was estimated from field observations. Quantity of Structural Repair of Concrete (Depth Greater than 5") is assumed to be 5% of the quantity for Structural Repair of Concrete (Depth Equal to or less than 5"). The actual repair areas will be determined by the Resident Engineer. Actual repair locations shall be shown on the as-built plans. The Contractor will be paid for the quantity furnished.

P:\1052010\20103003\cadd\structural\dm\045-0039\_f\incl\00\1060133-e066e-pier6-rep.dgn  
 6/14/2012 6:03:02 PM

USER NAME =	DESIGNED - J.Z. 6/15/2012	REVISED -
	CHECKED - J.A.Z. 6/15/2012	REVISED -
PLOT SCALE =	DRAWN - D.L.G. 6/15/2012	REVISED -
PLOT DATE =	CHECKED - J.Z. 6/15/2012	REVISED -

F.A.P. RTE.	SECTION	COUNTY	TOTAL SHEETS	SHEET NO.
349	(10 & 11VB) R-3	KANE	507	287
CONTRACT NO. 60133				