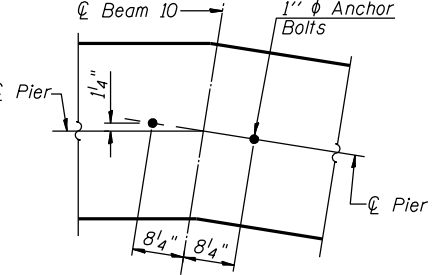
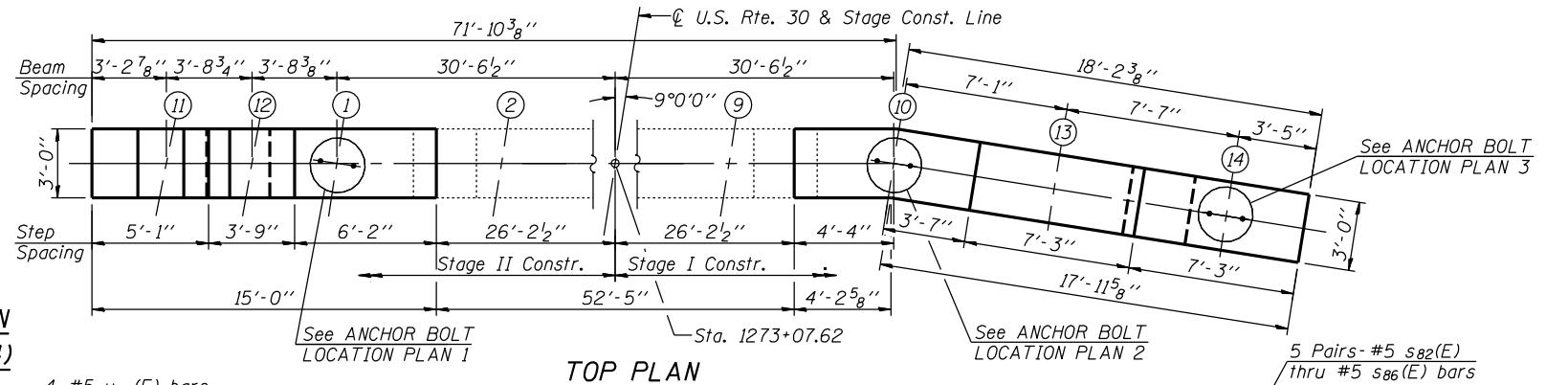


ANCHOR BOLT LOCATION PLAN 1 (BEAM 11, 12 & 1)

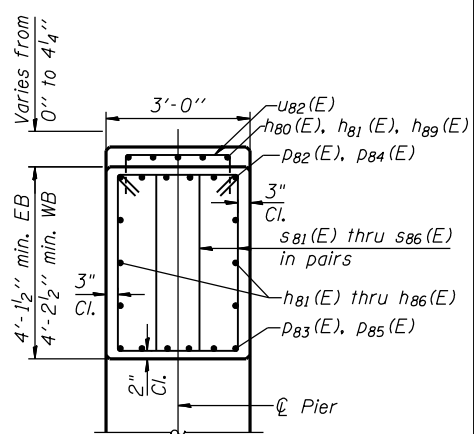
ANCHOR BOLT LOCATION PLAN 3 (BEAMS 13 & 14)



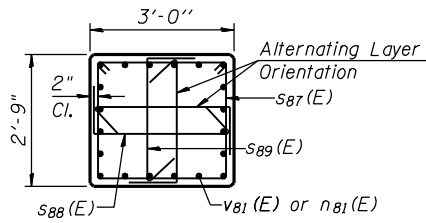
ANCHOR BOLT LOCATION PLAN 2 (BEAM 10 ONLY)



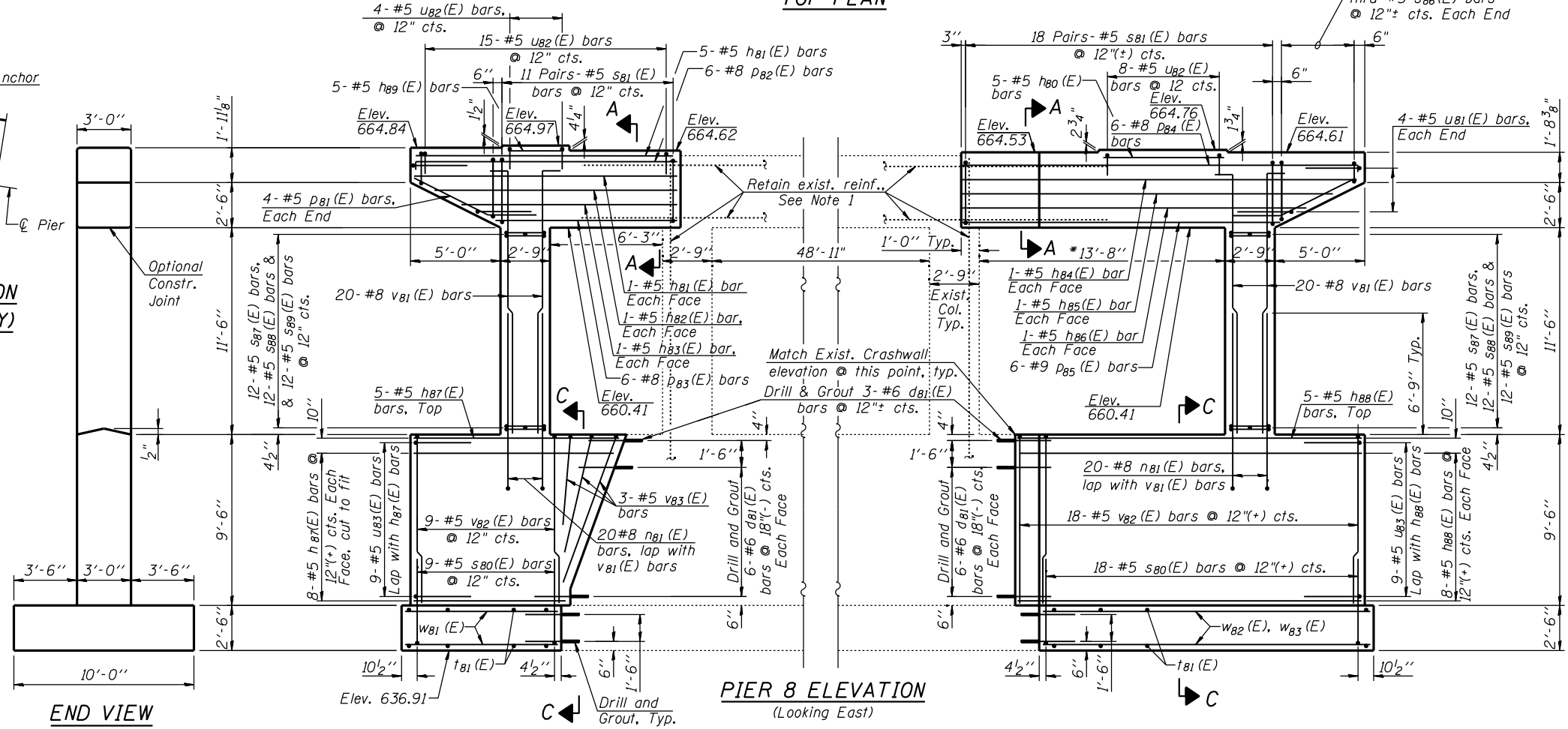
TOP PLAN



SECTION A-A

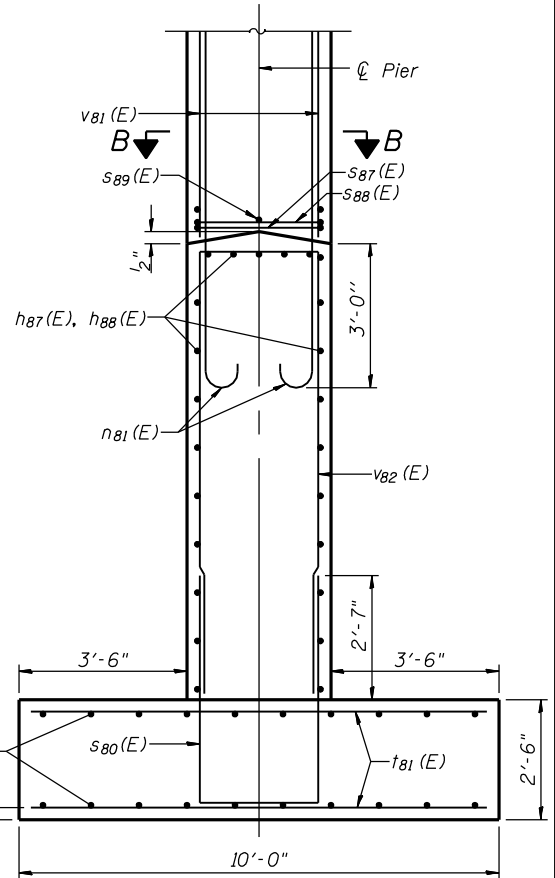


SECTION B-B

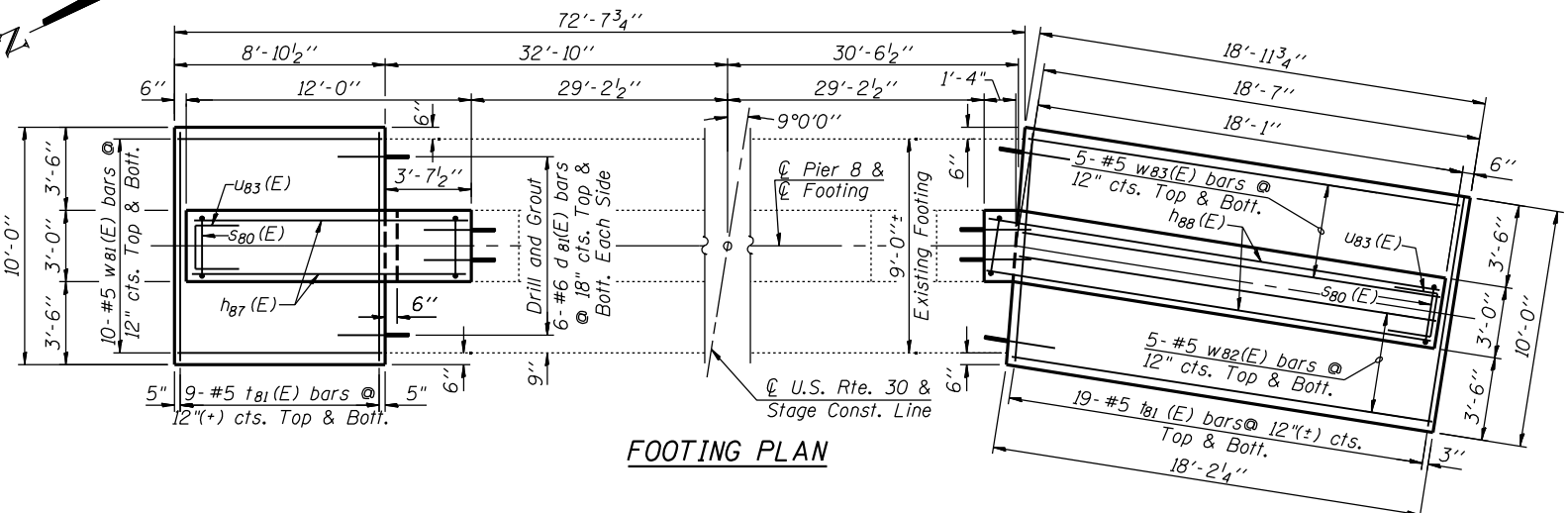


PIER 8 ELEVATION (Looking East)

END VIEW



SECTION C-C



FOOTING PLAN

NOTES:

1. Existing reinforcement shall be cleaned, straightened and incorporated into the new construction. Cost included with "Concrete Removal".
2. See Sheet S81 for reinforcement details.
3. Space reinforcement in cap to miss anchor bolts.
4. Pour steps monolithically with cap.
5. Embedment depth for #6 bars drilled & grouted is 9".
6. Maximum applied service load soil bearing pressure is 3,800 psf.
7. * Denotes dimensions along ϕ of Pier.

H:\Jobs\2010\20103003\CAD\Structure\pier.dgn, 045-0039, Find\00\Di\6033-e080-pier-8.dgn 6/26/2012 11:29:14 AM

USER NAME =	DESIGNED - J.Z. 6/25/2012	REVISED -
PLOT SCALE =	CHECKED - J.J.G. 6/25/2012	REVISED -
PLOT DATE =	DRAWN - E.U.B. 6/25/2012	REVISED -
	CHECKED - J.Z. 6/25/2012	REVISED -

F.A.P. RTE.	SECTION	COUNTY	TOTAL SHEETS	SHEET NO.
349	(10 & 11VB) R-3	KANE	507	301
CONTRACT NO. 60133			ILLINOIS FED. AID PROJECT	