

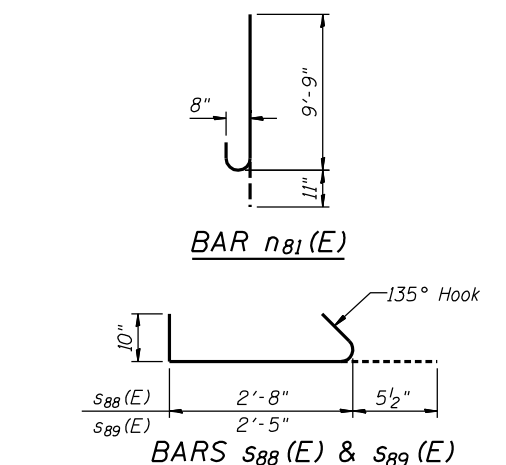
BILL OF MATERIAL - PIER 8

Bar	No.	Size	Length	Shape
d ₈₁ (E)	54	#6	4'-3"	—
h ₈₀ (E)	5	#5	6'-11"	—
h ₈₁ (E)	7	#5	14'-8"	—
h ₈₂ (E)	2	#5	13'-4"	—
h ₈₃ (E)	2	#5	11'-6"	—
h ₈₄ (E)	2	#5	22'-1"	—
h ₈₅ (E)	2	#5	20'-10"	—
h ₈₆ (E)	2	#5	19'-0"	—
h ₈₇ (E)	21	#5	11'-0"	—
h ₈₈ (E)	21	#5	19'-0"	—
h ₈₉ (E)	5	#5	3'-5"	—

n ₈₁ (E)	40	#8	10'-8"	—
p ₈₁ (E)	8	#5	8'-6"	—
p ₈₂ (E)	6	#8	15'-11"	—
p ₈₃ (E)	6	#8	9'-8"	—
p ₈₄ (E)	6	#8	24'-7"	—
p ₈₅ (E)	6	#9	17'-2"	—
s ₈₀ (E)	27	#5	12'-2"	—
s ₈₁ (E)	58	#5	11'-11"	—
s ₈₂ (E)	4	#5	11'-7"	—
s ₈₃ (E)	4	#5	10'-7"	—
s ₈₄ (E)	4	#5	9'-7"	—
s ₈₅ (E)	4	#5	8'-7"	—
s ₈₆ (E)	4	#5	7'-7"	—
s ₈₇ (E)	24	#5	11'-1"	—
s ₈₈ (E)	24	#5	4'-0"	—
s ₈₉ (E)	24	#5	3'-9"	—

t ₈₁ (E)	56	#5	9'-8"	—
u ₈₁ (E)	8	#5	8'-8"	—
u ₈₂ (E)	27	#5	6'-6"	—
u ₈₃ (E)	18	#5	7'-2"	—
v ₈₁ (E)	40	#8	16'-4"	—
v ₈₂ (E)	27	#5	21'-2"	—
v ₈₃ (E)	3	#5	18'-8"	—
w ₈₁ (E)	20	#5	8'-6"	—
w ₈₂ (E)	10	#5	17'-10"	—
w ₈₃ (E)	10	#5	18'-6"	—

Structure Excavation	Cu Yd.	90
Concrete Structures	Cu Yd.	81.0
Reinforcement Bars, Epoxy Coated	Pound	9,360



NOTES:
1. Work this Sheet with Sheets S78 thru S80.

F.A.P. RTE.	SECTION	COUNTY	TOTAL SHEETS	SHEET NO.
349	(10 & 11VB) R-3	KANE	507	302
CONTRACT NO. 60133				
ILLINOIS FED. AID PROJECT				

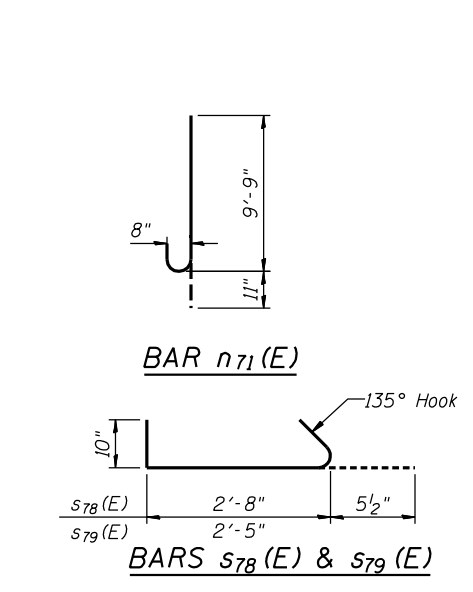
BILL OF MATERIAL - PIER 7

Bar	No.	Size	Length	Shape
d ₇₁ (E)	66	#6	4'-3"	—
h ₇₁ (E)	2	#5	17'-4"	—
h ₇₂ (E)	2	#5	16'-0"	—
h ₇₃ (E)	2	#5	14'-2"	—
h ₇₄ (E)	2	#5	22'-1"	—
h ₇₅ (E)	2	#5	20'-10"	—
h ₇₆ (E)	2	#5	19'-0"	—
h ₇₇ (E)	31	#5	14'-0"	—
h ₇₈ (E)	31	#5	19'-0"	—
h ₇₉ (E)	5	#5	4'-8"	—

n ₇₁ (E)	40	#8	10'-8"	—
p ₇₁ (E)	8	#5	8'-6"	—
p ₇₂ (E)	6	#8	18'-7"	—
p ₇₃ (E)	6	#8	12'-4"	—
p ₇₄ (E)	6	#8	24'-7"	—
p ₇₅ (E)	6	#9	17'-2"	—
s ₇₀ (E)	29	#5	12'-2"	—
s ₇₁ (E)	62	#5	11'-11"	—
s ₇₂ (E)	4	#5	11'-7"	—
s ₇₃ (E)	4	#5	10'-7"	—
s ₇₄ (E)	4	#5	9'-7"	—
s ₇₅ (E)	4	#5	8'-7"	—
s ₇₆ (E)	4	#5	7'-7"	—
s ₇₇ (E)	24	#5	11'-1"	—
s ₇₈ (E)	24	#5	4'-0"	—
s ₇₉ (E)	24	#5	3'-9"	—

t ₇₁ (E)	62	#5	10'-8"	—
u ₇₁ (E)	8	#5	8'-8"	—
u ₇₂ (E)	6	#5	6'-6"	—
u ₇₃ (E)	28	#5	7'-2"	—
v ₇₁ (E)	40	#8	16'-0"	—
v ₇₂ (E)	30	#5	28'-10"	—
v ₇₃ (E)	3	#5	18'-8"	—
w ₇₁ (E)	22	#5	11'-2"	—
w ₇₂ (E)	12	#5	17'-10"	—
w ₇₃ (E)	10	#5	18'-6"	—

Structure Excavation	Cu Yd.	80
Concrete Structures	Cu Yd.	103.0
Reinforcement Bars, Epoxy Coated	Pound	10,360



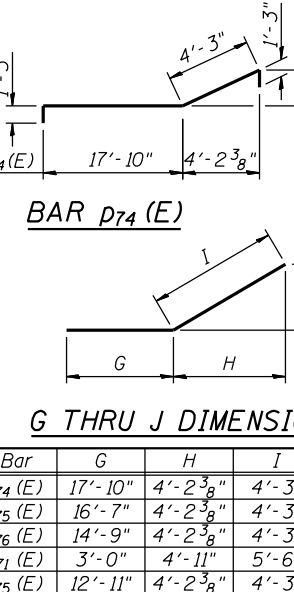
BILL OF MATERIAL - PIER 6

Bar	No.	Size	Length	Shape
d ₆₁ (E)	70	#6	4'-3"	—
h ₆₁ (E)	2	#5	20'-0"	—
h ₆₂ (E)	2	#5	18'-7"	—
h ₆₃ (E)	2	#5	16'-10"	—
h ₆₄ (E)	2	#5	22'-1"	—
h ₆₅ (E)	2	#5	20'-10"	—
h ₆₆ (E)	2	#5	19'-0"	—
h ₆₇ (E)	33	#5	16'-10"	—
h ₆₈ (E)	33	#5	19'-0"	—
h ₆₉ (E)	5	#5	6'-0"	—

n ₆₁ (E)	40	#8	10'-8"	—
p ₆₁ (E)	8	#5	8'-6"	—
p ₆₂ (E)	6	#8	21'-3"	—
p ₆₃ (E)	6	#8	15'-1"	—
p ₆₄ (E)	6	#8	24'-7"	—
p ₆₅ (E)	6	#9	17'-2"	—
s ₆₀ (E)	32	#5	12'-2"	—
s ₆₁ (E)	68	#5	11'-11"	—
s ₆₂ (E)	4	#5	11'-7"	—
s ₆₃ (E)	4	#5	10'-7"	—
s ₆₄ (E)	4	#5	9'-7"	—
s ₆₅ (E)	4	#5	8'-7"	—
s ₆₆ (E)	4	#5	7'-7"	—
s ₆₇ (E)	22	#5	11'-1"	—
s ₆₈ (E)	22	#5	4'-0"	—
s ₆₉ (E)	22	#5	3'-9"	—

t ₆₁ (E)	68	#5	9'-8"	—
u ₆₁ (E)	8	#5	8'-8"	—
u ₆₂ (E)	6	#5	6'-6"	—
u ₆₃ (E)	30	#5	7'-2"	—
v ₆₁ (E)	40	#8	15'-6"	—
v ₆₂ (E)	33	#5	31'-10"	—
v ₆₃ (E)	3	#5	18'-8"	—
w ₆₁ (E)	20	#5	13'-10"	—
w ₆₂ (E)	10	#5	17'-10"	—
w ₆₃ (E)	10	#5	18'-6"	—

Structure Excavation	Cu Yd.	140
Concrete Structures	Cu Yd.	113.0
Reinforcement Bars, Epoxy Coated	Pound	10,880



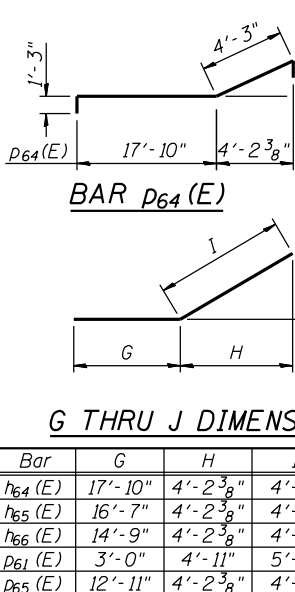
BILL OF MATERIAL - PIER 6

Bar	No.	Size	Length	Shape
d ₆₁ (E)	70	#6	4'-3"	—
h ₆₁ (E)	2	#5	20'-0"	—
h ₆₂ (E)	2	#5	18'-7"	—
h ₆₃ (E)	2	#5	16'-10"	—
h ₆₄ (E)	2	#5	22'-1"	—
h ₆₅ (E)	2	#5	20'-10"	—
h ₆₆ (E)	2	#5	19'-0"	—
h ₆₇ (E)	33	#5	16'-10"	—
h ₆₈ (E)	33	#5	19'-0"	—
h ₆₉ (E)	5	#5	6'-0"	—

n ₆₁ (E)	40	#8	10'-8"	—
p ₆₁ (E)	8	#5	8'-6"	—
p ₆₂ (E)	6	#8	21'-3"	—
p ₆₃ (E)	6	#8	15'-1"	—
p ₆₄ (E)	6	#8	24'-7"	—
p ₆₅ (E)	6	#9	17'-2"	—
s ₆₀ (E)	32	#5	12'-2"	—
s ₆₁ (E)	68	#5	11'-11"	—
s ₆₂ (E)	4	#5	11'-7"	—
s ₆₃ (E)	4	#5	10'-7"	—
s ₆₄ (E)	4	#5	9'-7"	—
s ₆₅ (E)	4	#5	8'-7"	—
s ₆₆ (E)	4	#5	7'-7"	—
s ₆₇ (E)	22	#5	11'-1"	—
s ₆₈ (E)	22	#5	4'-0"	—
s ₆₉ (E)	22	#5	3'-9"	—

t ₆₁ (E)	68	#5	9'-8"	—
u ₆₁ (E)	8	#5	8'-8"	—
u ₆₂ (E)	6	#5	6'-6"	—
u ₆₃ (E)	30	#5	7'-2"	—
v ₆₁ (E)	40	#8	15'-6"	—
v ₆₂ (E)	33	#5	31'-10"	—
v ₆₃ (E)	3	#5	18'-8"	—
w ₆₁ (E)	20	#5	13'-10"	—
w ₆₂ (E)	10	#5	17'-10"	—
w ₆₃ (E)	10	#5	18'-6"	—

Structure Excavation	Cu Yd.	140
Concrete Structures	Cu Yd.	113.0
Reinforcement Bars, Epoxy Coated	Pound	10,880



A & B DIMENSIONS

Bar	A	B
p ₆₂ (E)	20'-0"	1'-3"
v ₆₁ (E)	14'-2"	1'-4"

C & D DIMENSIONS

Bar	C	D
s ₆₁ (E)	3'-8"	1'-10"
s ₆₂ (E)	3'-6"	1'-0"
s ₆₃ (E)	3'-0"	1'-10"
s ₆₄ (E)	2'-6"	1'-10"
s ₆₅ (E)	2'-0"	1'-10"
s ₆₆ (E)	1'-6"	1'-10"
s ₆₇ (E)	2'-8"	2'-5"

E & F DIMENSIONS

Bar	E	F
s ₆₀ (E)	4'-9"	2'-8"
u ₆₁ (E)	3'-0"	2'-8"
u ₆₂ (E)	1'-11"	2'-8"
u ₆₃ (E)	2'-3"	2'-8"
v ₆₂ (E)	14'-7"	2'-8"
v ₆₃ (E)	8'-0"	2'-8"

G THRU J DIMENSIONS

Bar	G	H	I	J
h ₆₄ (E)	17'-10"	4'-2 ³ / ₈ "	4'-3"	8"
h ₆₅ (E)	16'-7"	4'-2 ³ / ₈ "	4'-3"	8"
h ₆₆ (E)	14'-9"	4'-2 ³ / ₈ "	4'-3"	8"
p ₆₁ (E)	3'-0"	4'-11"	5'-6"	2'-5 ¹ / ₂ "
p ₆₅ (E)	12'-11"	4'-2 ³ / ₈ "	4'-3"	8"

P:\10522010\20103003\cadd\structure\pier6\045-0039.fincad\00.D160133-e081-pier6.7.8-dt.dgn
 6/14/2012 6:05:55 PM

GR&EF
8501 W. Higgins Road, Suite 280
Chicago, Illinois 60631; (773) 399-0112

USER NAME =	DESIGNED - J.Z.	6/15/2012	REVISED -
PLOT SCALE =	CHECKED - J.J.G.	6/15/2012	REVISED -
PLOT DATE =	DRAWN - E.U.B.	6/15/2012	REVISED -
	CHECKED - J.Z.	6/15/2012	REVISED -

**STATE OF ILLINOIS
DEPARTMENT OF TRANSPORTATION**

**PIERS 6, 7 & 8 DETAILS
STRUCTURE NO. 045-0039**
SHEET NO. S81 OF 116 SHEETS