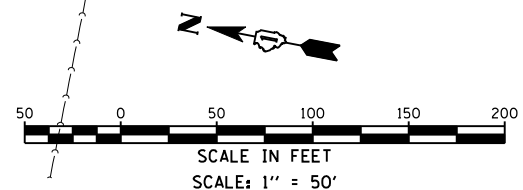
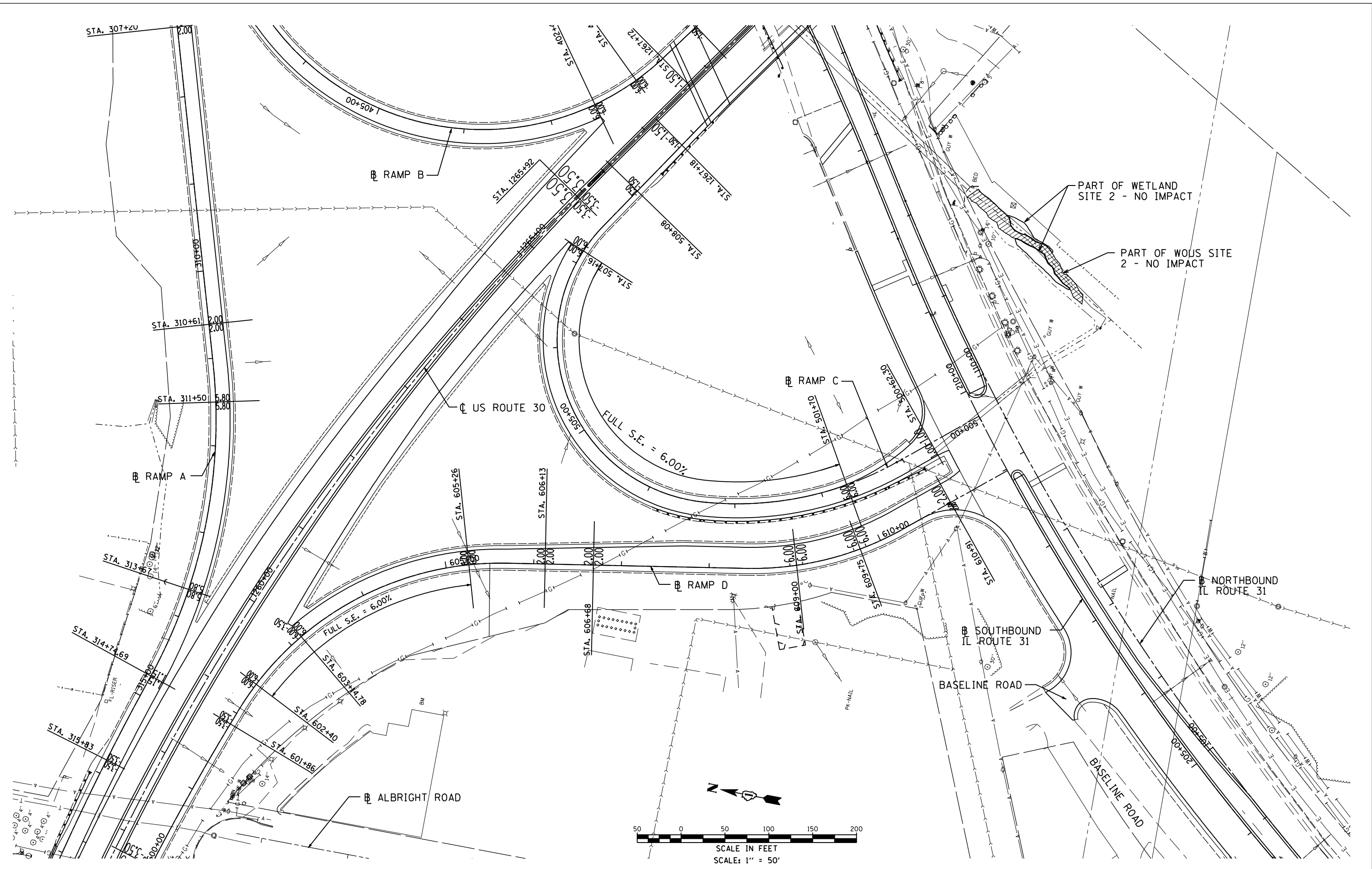


5/16/2012 12:44:22 AM



USER NAME = 1654	DESIGNED - JWB	REVISED -
	DRAWN - JWB	REVISED -
PLOT SCALE = 100.0000' / IN.	CHECKED - RS	REVISED -
PLOT DATE = 5/16/2012	DATE - 05/11/2012	REVISED -

**STATE OF ILLINOIS  
DEPARTMENT OF TRANSPORTATION**

**U.S. ROUTE 30 AT IL ROUTE 31  
SUPERELEVATION PLAN - RAMP C AND RAMP D**

SCALE: 1"=50'      SHEET NO. --

(RAMP C) STA. 500+00 TO STA. 507+52  
(RAMP D) STA. 600+00 TO STA. 609+96

F.A.P. RTE.	SECTION	COUNTY	TOTAL SHEETS	SHEET NO.
349	(10 & 11 VB) R-3	-	507	370
KANE AND KENDALL			CONTRACT NO. 60133	
ILLINOIS FED. AID PROJECT				