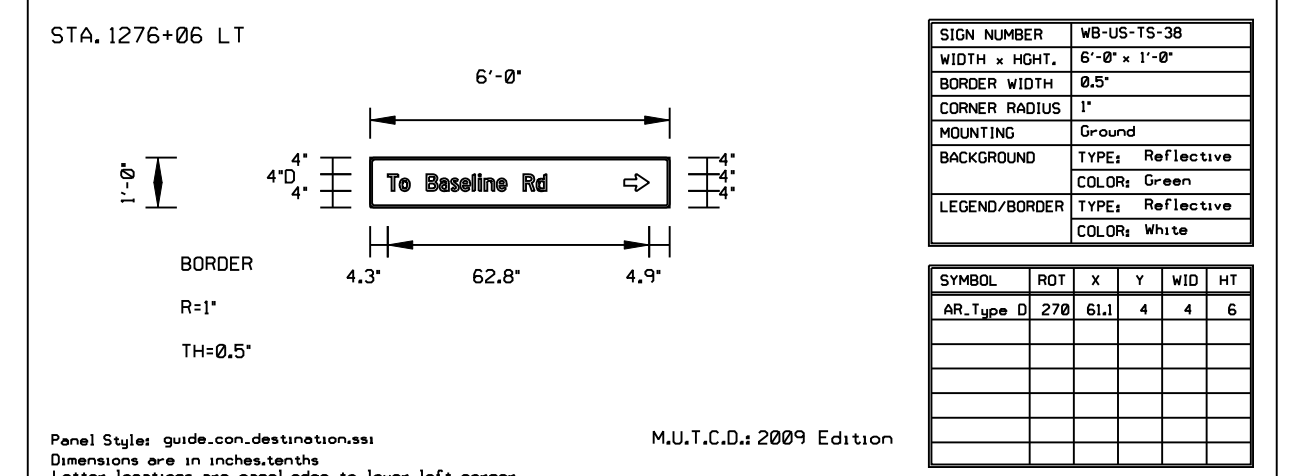


LETTER POSITIONS (X)													LENGTH	SERIES/ SIZE
														D 2000
													44.8	6/4.5
														D 2000
													24.1	6/4.5
														D 2000
													27.9	6/4.5



LETTER POSITIONS (X)													LENGTH	SERIES/ SIZE
														D 2000
													38.1	4/3

5/16/2012 12:54:16 AM

USER NAME = 1654	DESIGNED - JWB	REVISED -
	DRAWN - JWB	REVISED -
PLOT SCALE = 100.0000' / IN.	CHECKED - RS	REVISED -
PLOT DATE = 5/16/2012	DATE - 05/11/2012	REVISED -

**STATE OF ILLINOIS  
DEPARTMENT OF TRANSPORTATION**

**U.S. ROUTE 30 AT IL ROUTE 31  
SIGN DETAILS**

F.A.P. RTE.	SECTION	COUNTY	TOTAL SHEETS	SHEET NO.
349	(10 & 11 VB) R-3	*	507	380
* KANE AND KENDALL			CONTRACT NO. 60133	
ILLINOIS FED. AID PROJECT				