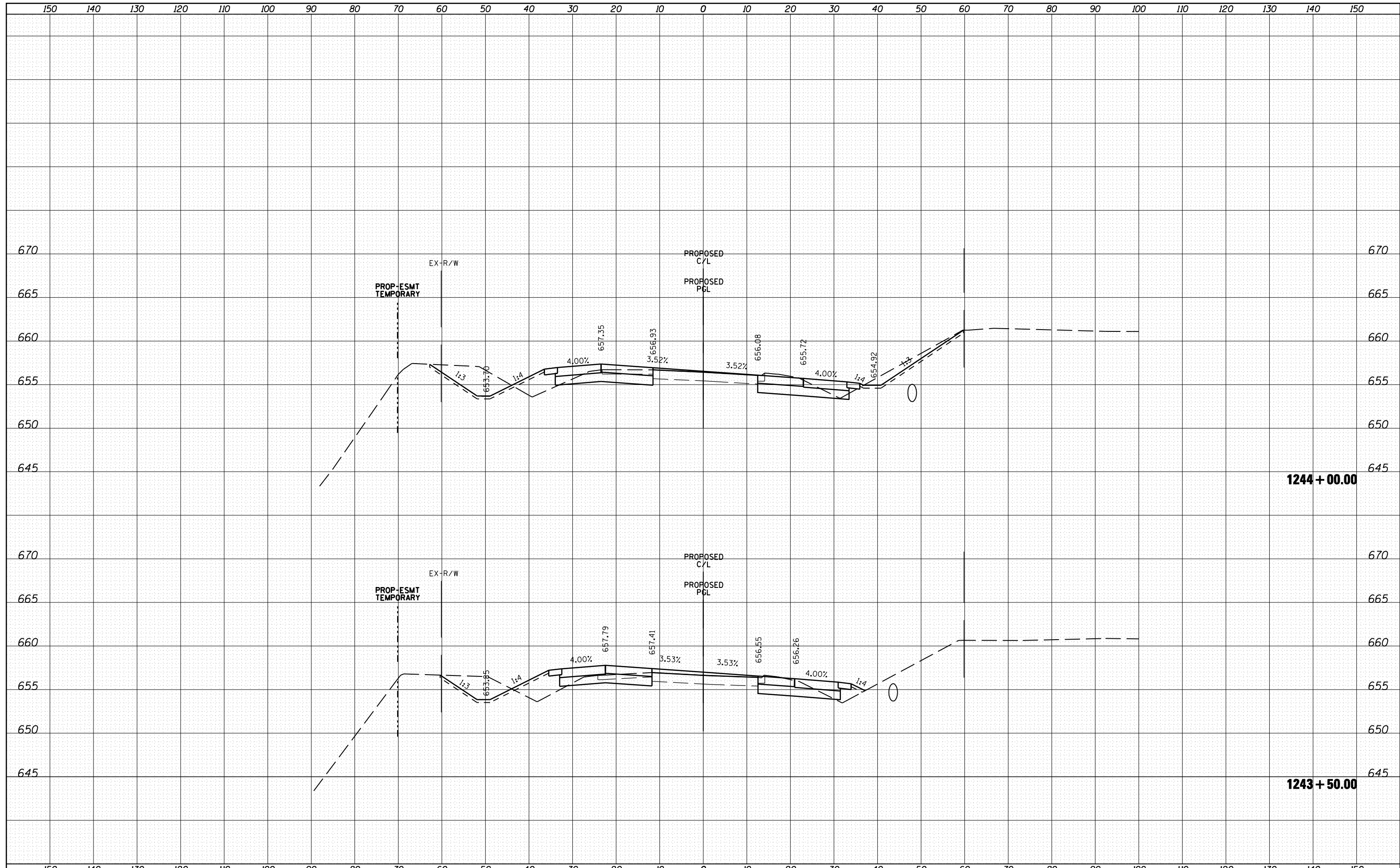


DATE	
BY	
SURVEYED	
PLOTTED	
TEMPLATE	
AREAS	
CHECKED	
FINAL SURVEY	
NOTE BOOK	
NO.	

DATE	
BY	
SURVEYED	
PLOTTED	
TEMPLATE	
AREAS	
CHECKED	
ORIGINAL SURVEY	
NOTE BOOK	
NO.	



FILE NAME =	USER NAME = 1654	DESIGNED - NGS	REVISD -	STATE OF ILLINOIS DEPARTMENT OF TRANSPORTATION	U.S. ROUTE 30 AT IL ROUTE 31 CROSS SECTIONS - U.S. ROUTE 30	F.A. RTE.	SECTION	COUNTY	TOTAL SHEETS	SHEET NO.
ht:\jobs\2010\20103003\cod\site\dgn\refs\US-30\060133-sht-US30-xsec.dgn	DRAWN - NGS	REVISD -	349			(10 & 11 VB) R-3	*	507	394	
PLOT SCALE = 20.0000' / IN.	CHECKED - RS	REVISD -	* KANE AND KENDALL			CONTRACT NO. 60133				
PLOT DATE = 6/15/2012	DATE - 06/15/2012	REVISD -	SCALE:			SHEET NO. 9 OF 41 SHEETS	STA. 1243+50.00 TO STA. 1244+00.00	ILLINOIS FED. AID PROJECT		