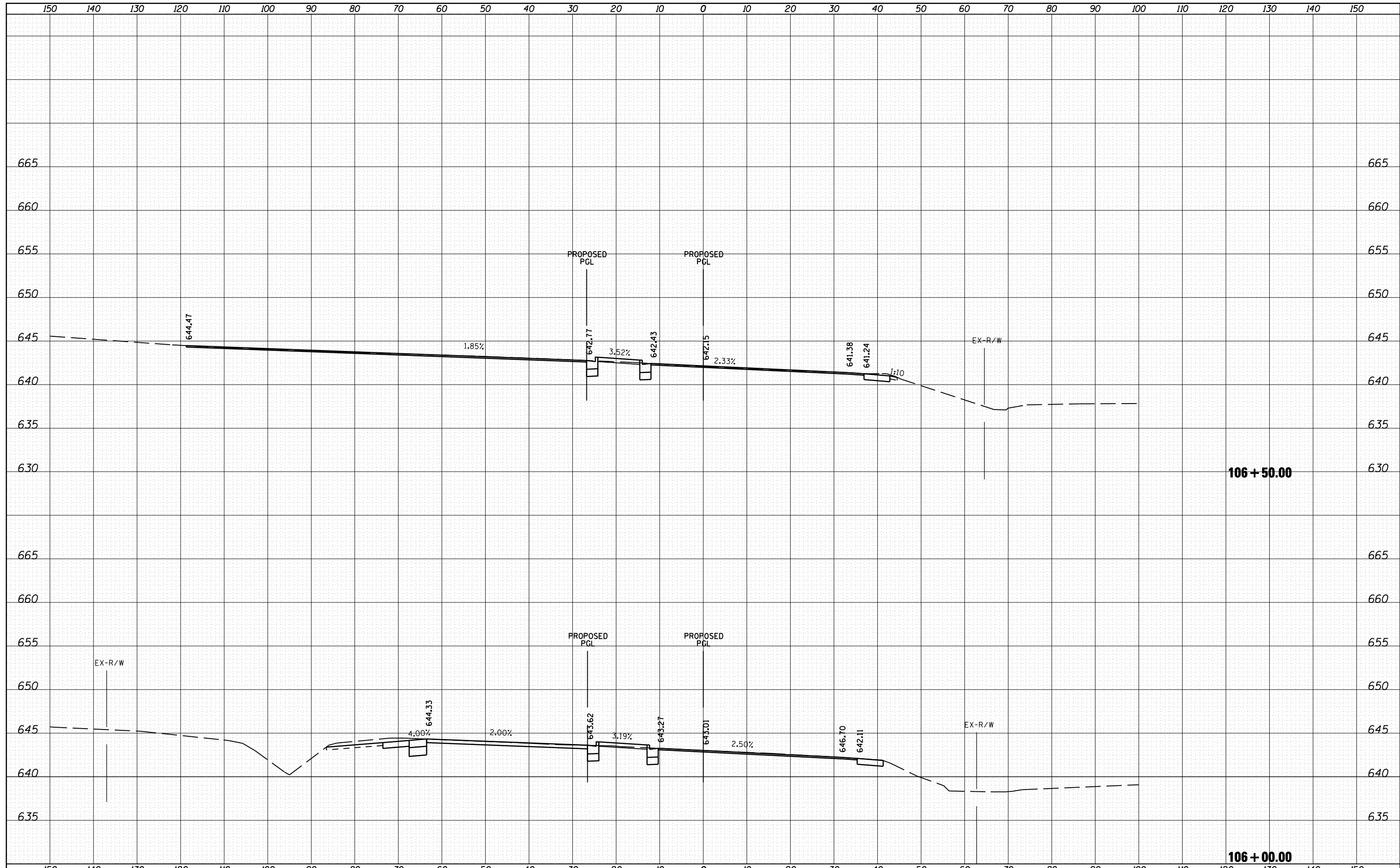


DATE	
BY	
SURVEYED	
PLOTTED	
TEMPLATE	
AREAS	
CHECKED	
FINAL SURVEY	
NOTE BOOK	
NO.	

DATE	
BY	
SURVEYED	
PLOTTED	
TEMPLATE	
AREAS	
CHECKED	
ORIGINAL SURVEY	
NOTE BOOK	
NO.	



FILE NAME =	USER NAME = 1654	DESIGNED - NGS	REVISED -	<b>STATE OF ILLINOIS DEPARTMENT OF TRANSPORTATION</b>	<b>U.S. ROUTE 30 AT IL ROUTE 31 CROSS SECTIONS - IL ROUTE 31</b>	F.A. RTE.	SECTION	COUNTY	TOTAL SHEETS	SHEET NO.
ht:\jobs\2010\20103003\cod\site\dgn\refs\IL-31\160133-sh.tl;IL31-xsec-NB.dgn	PLOT SCALE = 20.0000' / IN.	DRAWN - NGS	REVISED -			349	(10 & 11 VB) R-3	*	507	435
	PLOT DATE = 5/16/2012	CHECKED - RS	REVISED -			* KANE AND KENDALL		CONTRACT NO. 60133		
		DATE - 05/11/2012	REVISED -			ILLINOIS FED. AID PROJECT				

SCALE: SHEET NO. 9 OF 39 SHEETS STA. 106+00.00 TO STA. 106+50.00