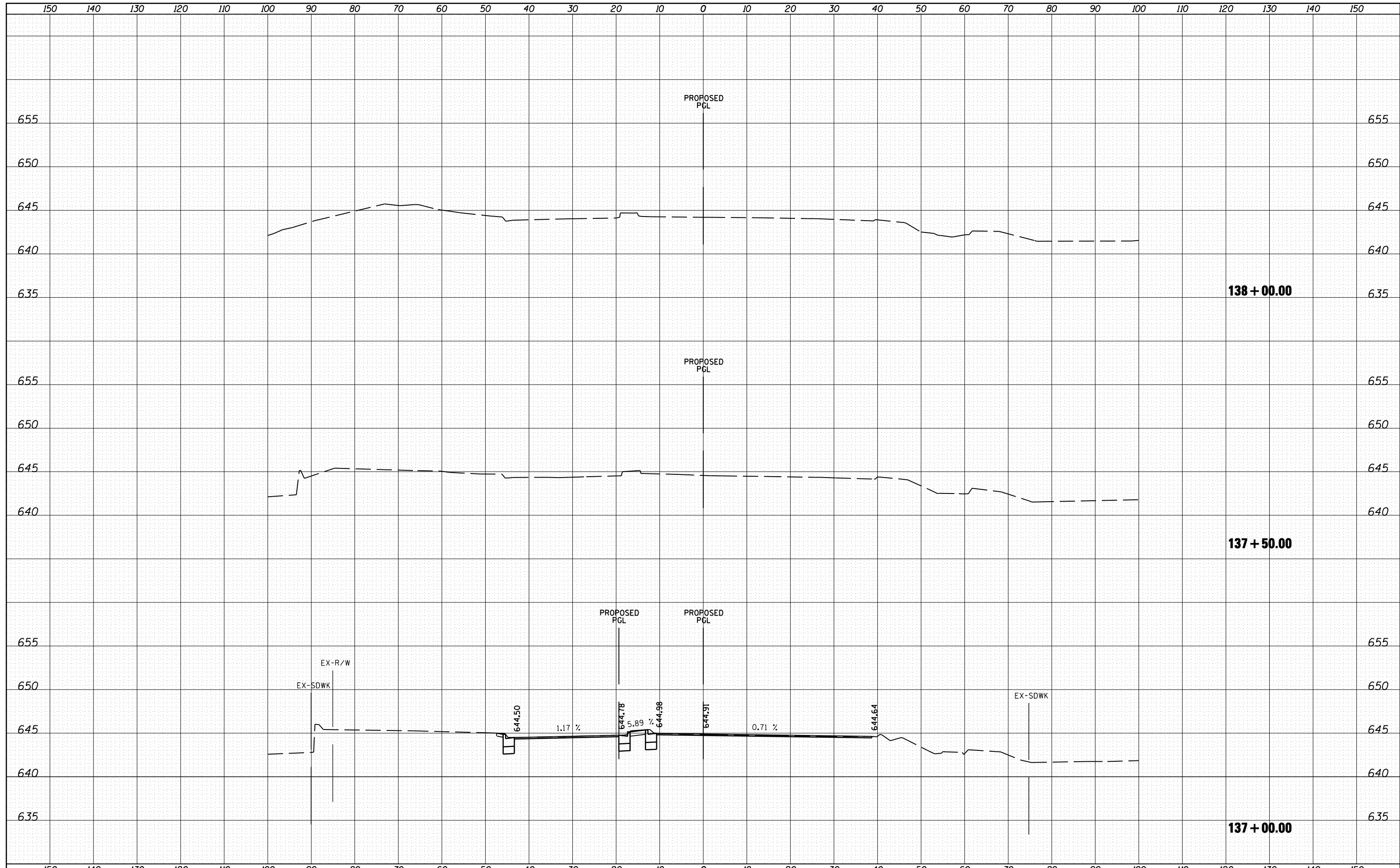


DATE	
BY	
SURVEYED	
PLOTTED	
TEMPLATE	
AREAS	
CHECKED	
FINAL SURVEY	
NOTE BOOK	
NO.	

DATE	
BY	
SURVEYED	
PLOTTED	
TEMPLATE	
AREAS	
CHECKED	
ORIGINAL SURVEY	
NOTE BOOK	
NO.	



FILE NAME =	USER NAME = 1654	DESIGNED - NGS	REVISIED -	STATE OF ILLINOIS DEPARTMENT OF TRANSPORTATION	U.S. ROUTE 30 AT IL ROUTE 31 CROSS SECTIONS - IL ROUTE 31	F.A. RTE.	SECTION	COUNTY	TOTAL SHEETS	SHEET NO.
ht:\jobs\2010\20103003\cod\site\dgn\refs\IL-31\160133-sh.t..IL31-xsec-NB.dgn		DRAWN - NGS	REVISIED -			349	(10 & 11 VB) R-3	*	507	465
PLOT SCALE = 20.0000' / IN.		CHECKED - RS	REVISIED -			* KANE AND KENDALL		CONTRACT NO. 60133		
PLOT DATE = 5/16/2012		DATE - 05/11/2012	REVISIED -			SCALE:	SHEET NO. 39 OF 39 SHEETS	STA. 137+00.00	TO STA. 138+00.00	
ILLINOIS FED. AID PROJECT										