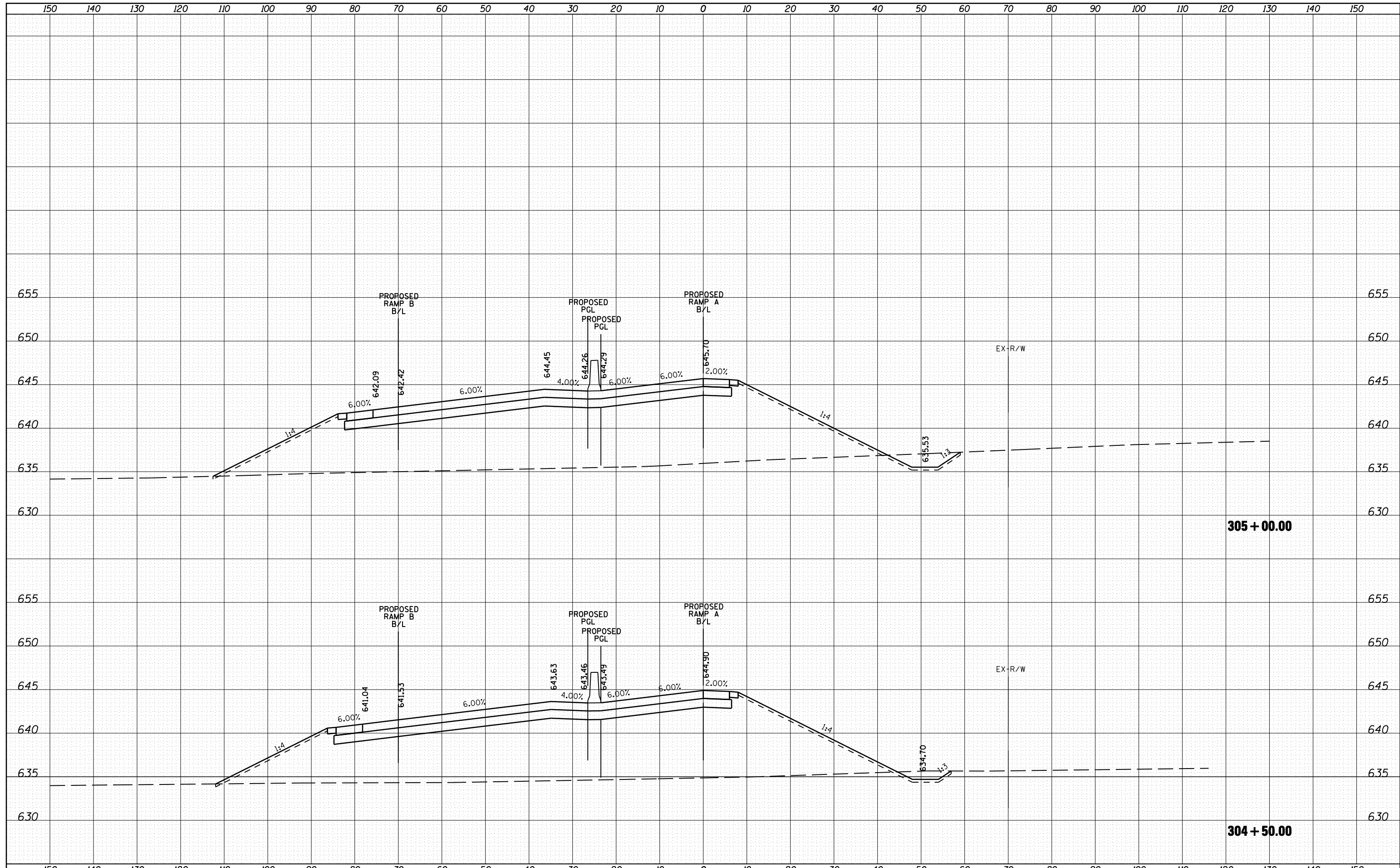


DATE	
BY	
SURVEYED	
PLOTTED	
TEMPLATE	
AREAS	
CHECKED	
FINAL SURVEY	
NOTE BOOK	
NO.	

DATE	
BY	
SURVEYED	
PLOTTED	
TEMPLATE	
AREAS	
CHECKED	
ORIGINAL SURVEY	
NOTE BOOK	
NO.	



FILE NAME =	USER NAME = 1654	DESIGNED - NGS	REVISED -	STATE OF ILLINOIS DEPARTMENT OF TRANSPORTATION	U.S. ROUTE 30 AT IL ROUTE 31 CROSS-SECTIONS - RAMP A	F.A. RTE.	SECTION	COUNTY	TOTAL SHEETS	SHEET NO.
ht:\jobs\2010\20103003\cod\site\dgn\refs\RampA-300\DI60133-sh1-RampA-300-xsec.dgn		DRAWN - NGS	REVISED -			349	(10 & 11 VB) R-3	*	507	469
PLOT SCALE = 20.0000' / IN.		CHECKED - RS	REVISED -			* KANE AND KENDALL		CONTRACT NO. 60133		
PLOT DATE = 5/16/2012		DATE - 05/11/2012	REVISED -			ILLINOIS FED. AID PROJECT				

SCALE: SHEET NO. 4 OF 16 SHEETS STA. 304+50.00 TO STA. 305+00.00