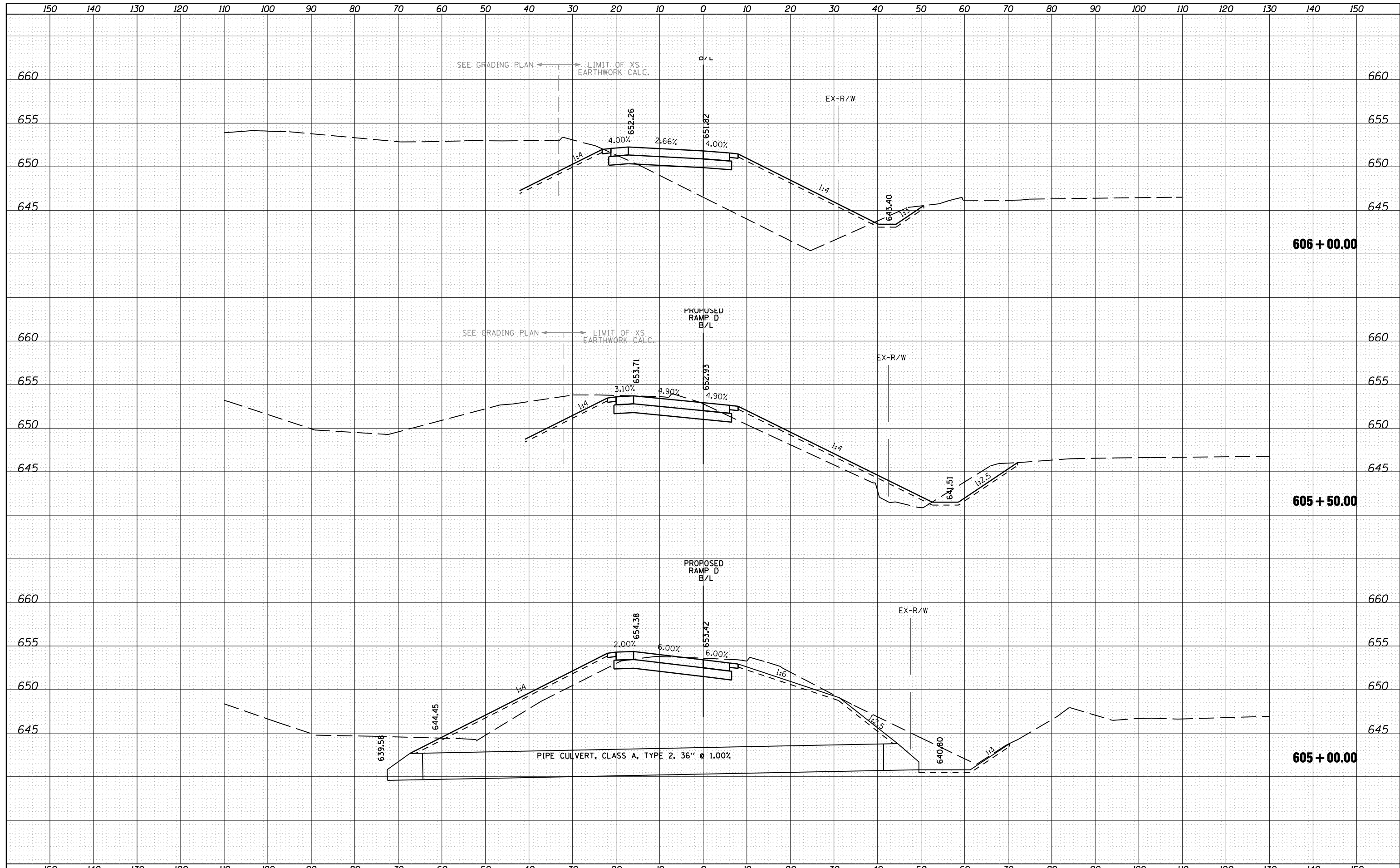


DATE	
BY	
SURVEYED	
PLOTTED	
TEMPLATE	
AREAS	
CHECKED	
FINAL SURVEY	
NOTE BOOK	
NO.	

DATE	
BY	
SURVEYED	
PLOTTED	
TEMPLATE	
AREAS	
CHECKED	
ORIGINAL SURVEY	
NOTE BOOK	
NO.	



FILE NAME = h:\jobs\2010\20103003\cod\site\dgn\refs\RampD-600\DI60133-sh1-RampD-600-xsec.dgn

USER NAME = 1654  
 DESIGNED - NGS  
 DRAWN - NGS  
 CHECKED - RS  
 DATE - 05/11/2012

REVISIED -  
 REVISIED -  
 REVISIED -  
 REVISIED -

**STATE OF ILLINOIS  
 DEPARTMENT OF TRANSPORTATION**

**U.S. ROUTE 30 AT IL ROUTE 31  
 CROSS SECTIONS - RAMP D**

SCALE: SHEET NO. 2 OF 6 SHEETS STA. 605+00.00 TO STA. 606+00.00

F.A. RTE.	SECTION	COUNTY	TOTAL SHEETS	SHEET NO.
349	(10 & 11 VB) R-3	*	507	503
* KANE AND KENDALL			CONTRACT NO. 60133	
ILLINOIS FED. AID PROJECT				