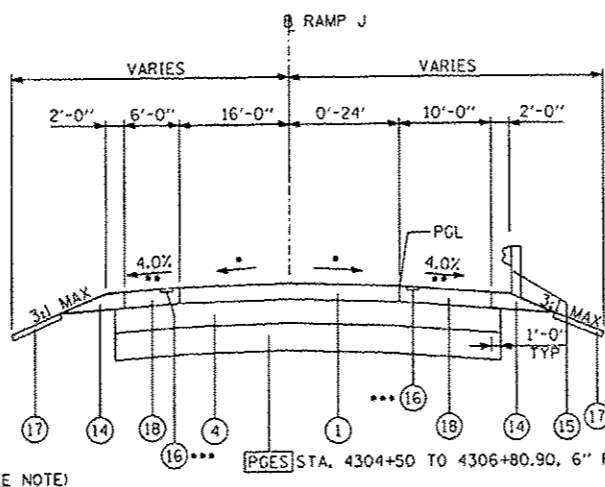


PGES STA. 4306+80.90 TO 4307+00, 6" PGES (SEE NOTE)

RAMP J

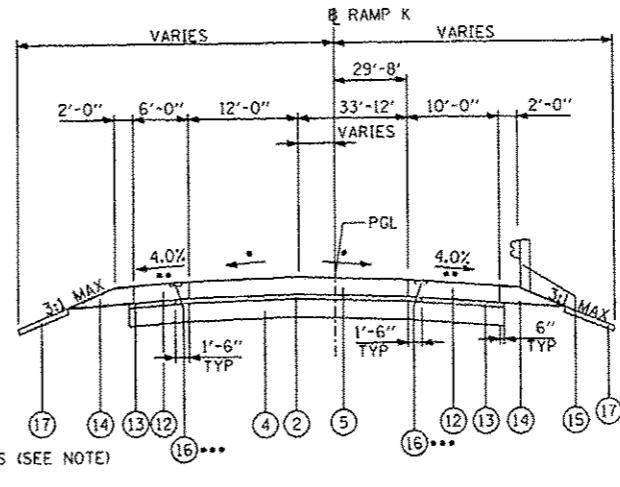
- STA. 4306+80.90 TO STA. 4311+60±
- REFER TO PROPOSED PLAN FOR PAVEMENT CROSS SLOPES
- 4% AND VARIES PER IDOT STD. 483001
- STA. 4306+81.19 TO STA. 4311+22.00 (SEE PLANS)



PGES STA. 4304+50 TO 4306+80.90, 6" PGES (SEE NOTE)

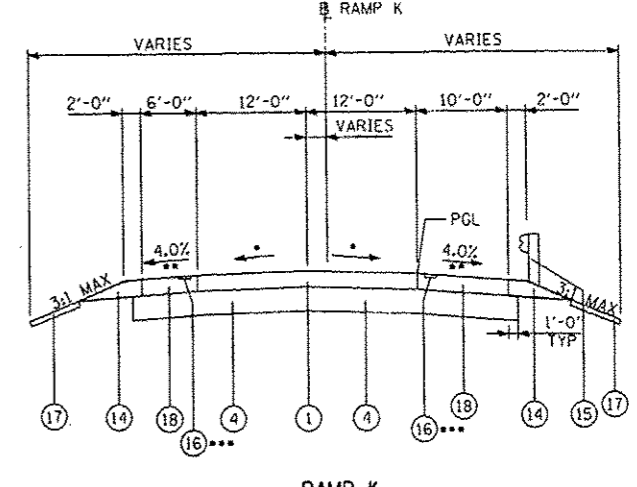
RAMP J

- STA. 4304+35.49 TO STA. 4306+80.90
- REFER TO PROPOSED PLAN FOR PAVEMENT CROSS SLOPES
- 4% AND VARIES PER IDOT STD. 483001
- STA. 4304+31.00 TO STA. 4306+81.19 (SEE PLANS)



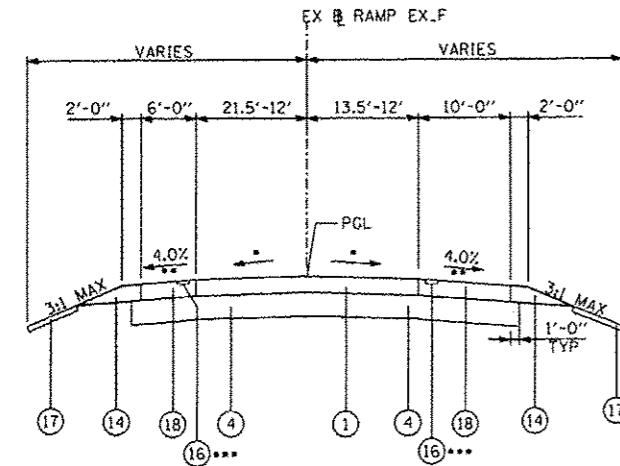
RAMP K

- STA. 4401+18.60 TO STA. 4404+22.45
- REFER TO PROPOSED PLAN FOR PAVEMENT CROSS SLOPES
- 4% AND VARIES PER IDOT STD. 483001
- STA. 4401+22.00 TO STA. 4404+22.45 (SEE PLANS)



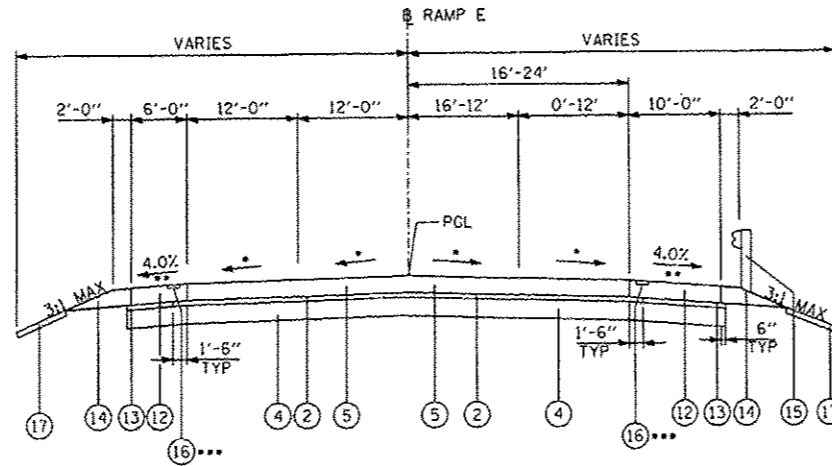
RAMP K

- STA. 4404+22.45 TO STA. 4407+36.54
- REFER TO PROPOSED PLAN FOR PAVEMENT CROSS SLOPES
- 4% AND VARIES PER IDOT STD. 483001
- STA. 4404+22.45 TO STA. 4407+36.00



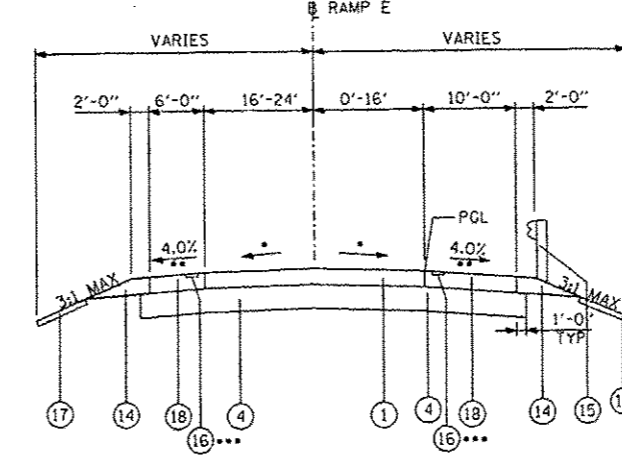
RAMP EX.F

- STA. 5201+53.87 TO STA. 5202+98.21
- REFER TO PROPOSED PLAN FOR PAVEMENT CROSS SLOPES
- 4% AND VARIES PER IDOT STD. 483001
- STA. 5201+50.00 TO STA. 5202+98.00 (SEE PLANS)



RAMP E

- STA. 4110+38.73 TO STA. 4115+36±
- REFER TO PROPOSED PLAN FOR PAVEMENT CROSS SLOPES
- 4% AND VARIES PER IDOT STD. 483001
- STA. 4110+39.09 TO STA. 4114+75.83 (SEE PLANS)



RAMP E

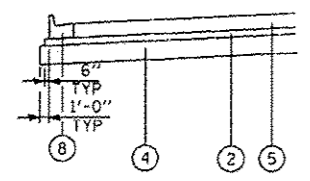
- STA. 4107+88.03 TO STA. 4110+38.73
- REFER TO PROPOSED PLAN FOR PAVEMENT CROSS SLOPES
- 4% AND VARIES PER IDOT STD. 483001
- STA. 4108+68.00 TO STA. 4110+39.09 (SEE PLANS)

LEGEND

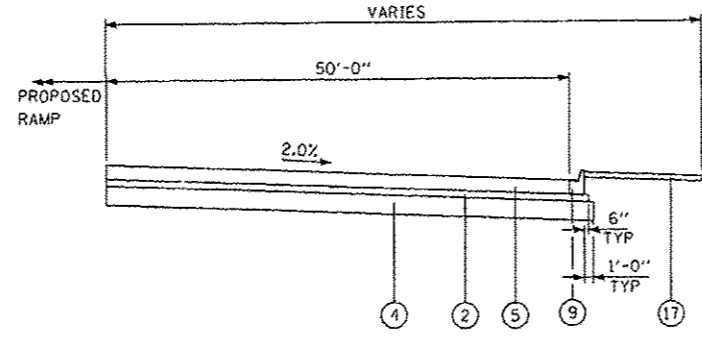
- PROPOSED PORTLAND CEMENT CONCRETE PAVEMENT 9" (JOINTED)
 - PROPOSED STABILIZED SUBBASE- HOT-MIX ASPHALT, 4 1/2"
 - PROPOSED PORTLAND CEMENT CONCRETE PAVEMENT, 10" (JOINTED)
 - AGGREGATE SUBGRADE IMPROVEMENT 12"
 - PROPOSED PORTLAND CEMENT CONCRETE PAVEMENT 11" (JOINTED)
 - PROPOSED POLYMERIZED HOT-MIX ASPHALT BINDER COURSE, IL-19.0, N90
 - PROPOSED POLYMERIZED HOT-MIX ASPHALT SURFACE COURSE, MIX "F", N90
 - PROPOSED COMBINATION CONCRETE CURB AND GUTTER, TYPE B-6.24
 - PROPOSED COMBINATION CONCRETE CURB AND GUTTER, TYPE B-6.12
 - PROPOSED CONCRETE CEMENT SIDEWALK, 5"
 - PROPOSED MEDIAN (SEE PLANS)
 - PROPOSED PORTLAND CEMENT CONCRETE SHOULDERS, 11"
 - SUBBASE GRANULAR MATERIAL, TYPE C
 - AGGREGATE SHOULDERS, TYPE B
 - STEEL PLATE BEAM GUARDRAIL (SEE PROPOSED PLANS FOR LIMITS)
 - PROPOSED SHOULDER RUMBLE STRIPS, 16"
 - TOPSOIL (SEE LANDSCAPING PLANS)
 - PROPOSED PORTLAND CEMENT CONCRETE SHOULDERS, 9"
- PGES SEE NOTE 2 ON TYPICAL SECTIONS SHEET 4 OF 4

NOTES:

1. RAMP J PGES PROVISION LIMITS: STA. 4304+50 TO 4307+00, 6" PGES.



CCC&G RAMP SECTION
RAMP E, RAMP J, AND RAMP K
SEE PLANS FOR LOCATION



ACCIDENT INVESTIGATION SITE

RAMP E: STA. 4110+58.39 TO STA. 4113+01.03
RAMP J: STA. 4306+96.70 TO STA. 4309+65.54

IDOT HOT-MIX ASPHALT MIXTURE REQUIREMENTS

ITEM	AIR VOIDS % Ndes
RAMP RECONSTRUCTION	
STABILIZED SUB-BASE HOT-MIX ASPHALT, IL-19.0, 4 1/2"	3%±50 Gyr
RAMP RESURFACING	
POLYMERIZED HOT-MIX ASPHALT SURFACE COURSE, MIX "F", N90 (IL-9.5mm), 2"	4%±90 Gyr

THE UNIT WEIGHT USED TO CALCULATE ALL HMA SURFACE MIXTURE QUANTITIES IS 112 LB/50 YD/IN.

THE "AC TYPE" FOR POLYMERIZED HMA MIXTURES SHALL BE "SBS/SBR PG 76-22" AND FOR NON-POLYMERIZED HMA THE "AC TYPE" SHALL BE "PG 64-22" UNLESS MODIFIED BY DISTRICT ONE SPECIAL PROVISIONS.

FOR "PERCENT OF RAP" SEE DISTRICT ONE SPECIAL PROVISIONS.

QCP IS FOR SMA ONLY (SMA SFC. & SMA BINDER).

12-44-31 PI 07/12/2012