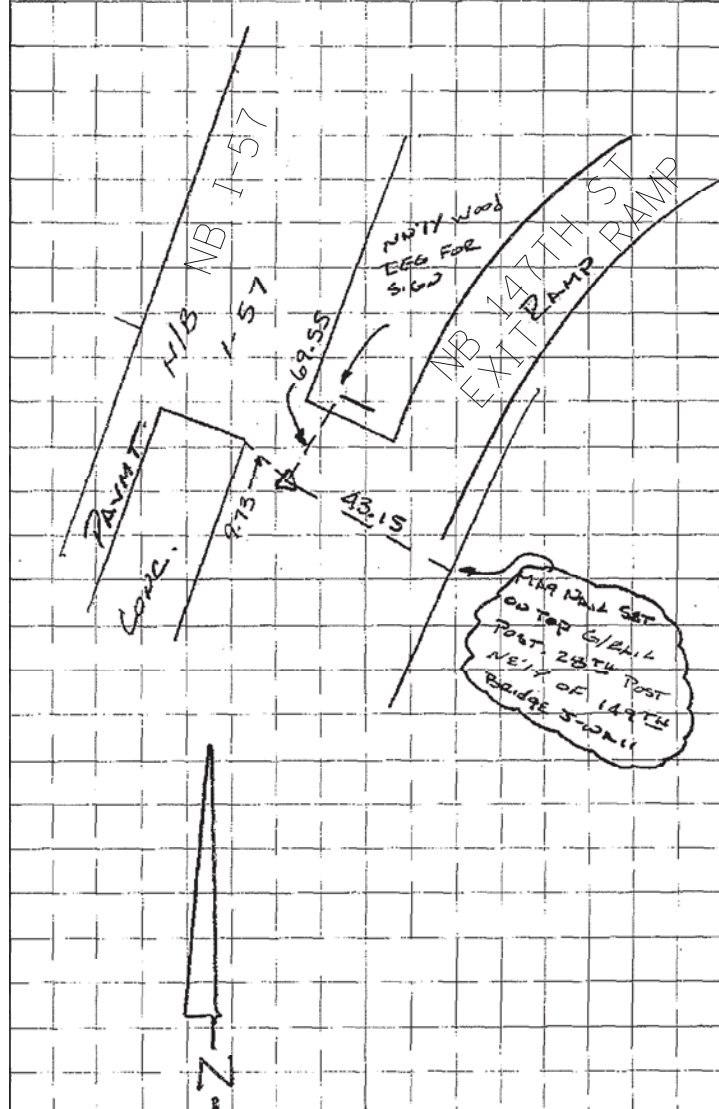
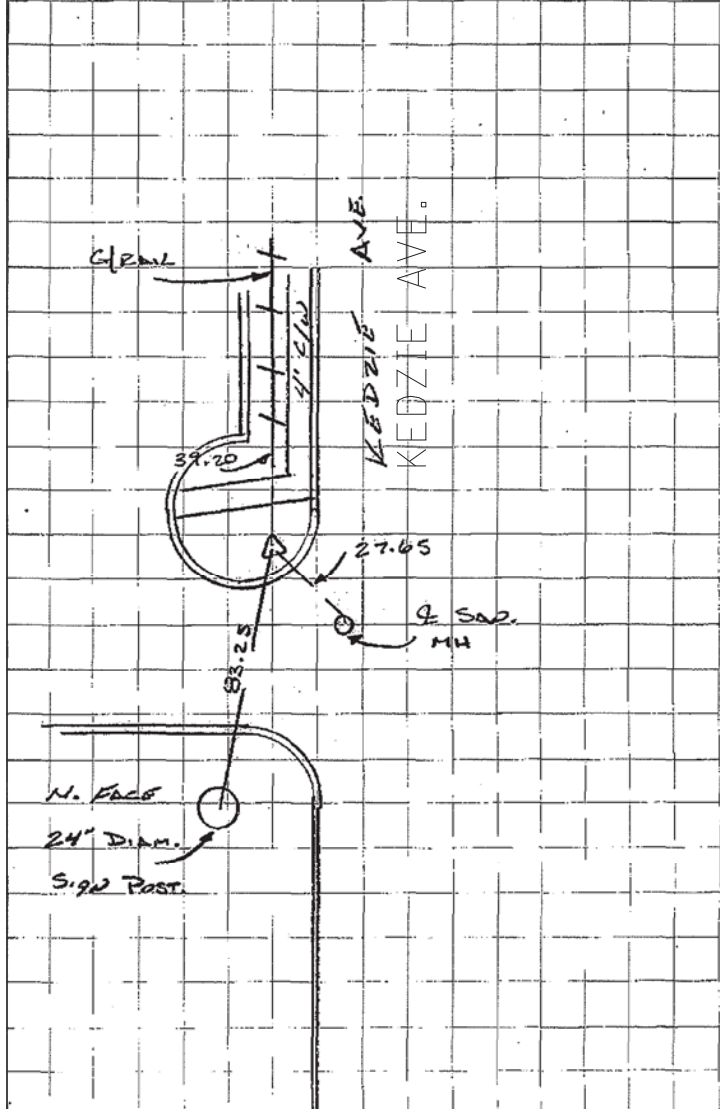


C.P. 101
 N: 1805571.385
 E: 1162333.689
 EL: 621.60



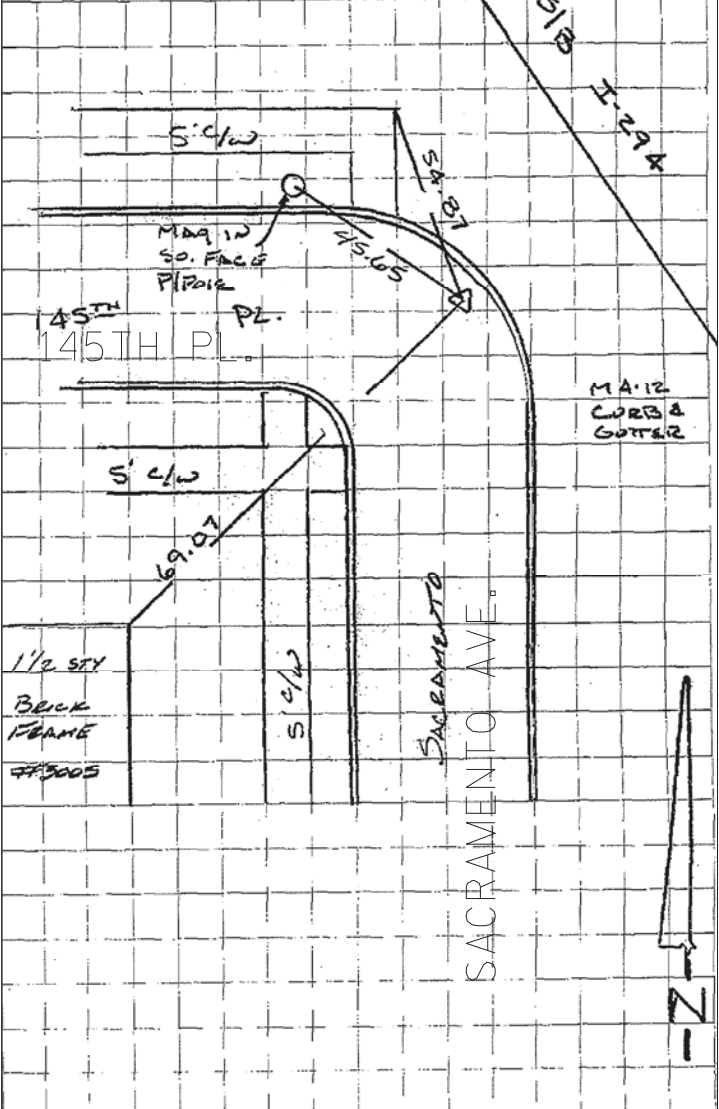
NORTHBOUND I-57 147TH STREET EXIT RAMP

C.P. 104
 N: 1809617.467
 E: 1157726.712
 EL: 607.37



SET 5/8" IRON ROD 3.42 NORTHWEST OF BACK OF CURB AT NORTHWEST CORNER OF KEDZIE AVE. AND 143RD ST.

C.P. 106
 N: 1807822.459
 E: 1159167.267
 EL: 604.62



SET MAG NAIL AT 145TH PLACE AND SACRAMENTO AVENUE.

TYLIN INTERNATIONAL	USER NAME =	DESIGNED - CAC	REVISED -
	PLOT SCALE =	DRAWN - CAC	REVISED -
	PLOT DATE =	CHECKED - JDF	REVISED -
		DATE - 5/23/2012	REVISED -

**STATE OF ILLINOIS
 DEPARTMENT OF TRANSPORTATION**

**147TH STREET PROJECT
 SURVEY TIES FOR CONTROL POINTS**

SCALE: N.T.S. SHEET NO. 7 OF 10 SHEETS STA. TO STA.

F.A.I. RTE.	SECTION	COUNTY	TOTAL SHEETS	SHEET NO.
XX	(0405-1 & 0506-2) R-1	COOK	577	22
FED. ROAD DIST. NO.			ILLINOIS FED. AID PROJECT	
			CONTRACT NO. 60M57	