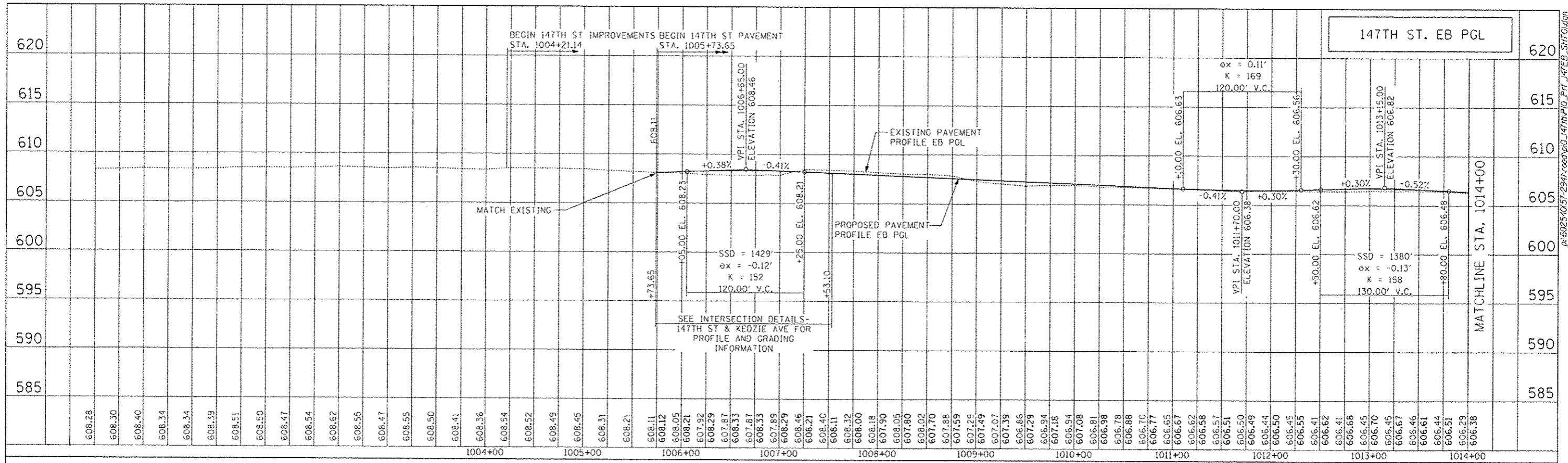
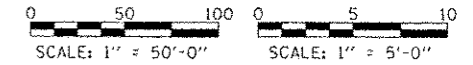


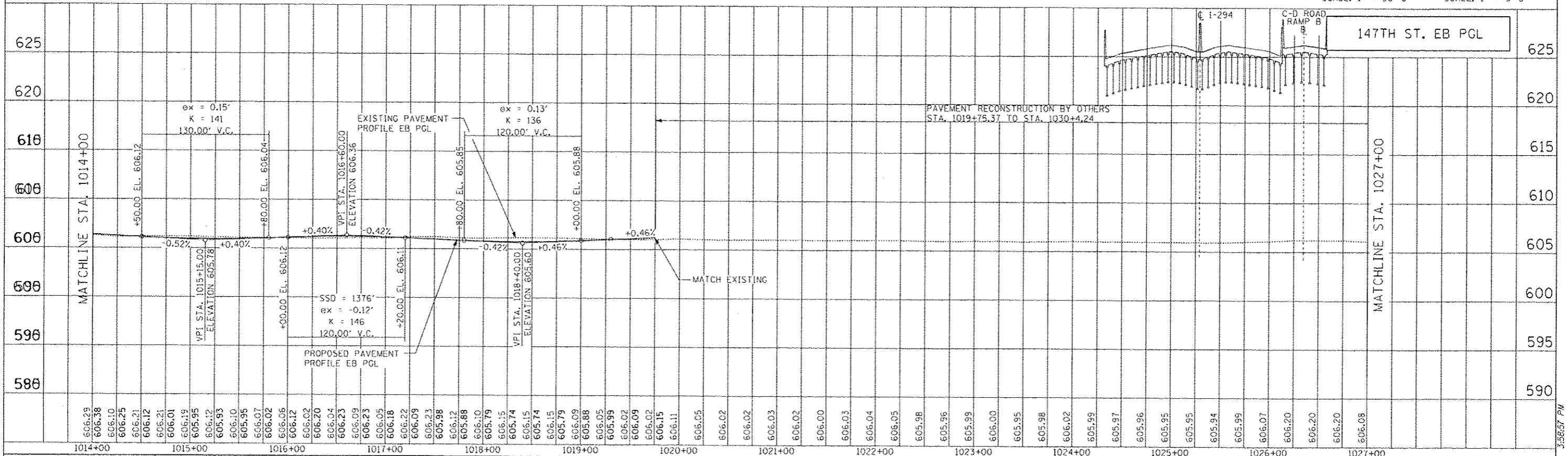
PLAN	DATE
REVISED	BY
NOTES	
NOTE BOOK	
NO.	



NOTE:
GRADES ON INTERSECTION DETAIL SHEETS SHALL GOVERN.



PROFILE	DATE
REVISED	BY
NOTES	
NOTE BOOK	
NO.	



TYLINS INTERNATIONAL

USER NAME :	DESIGNED - JPM	REVISED -
DRAWN - DM	CHECKED -	REVISED -
DATE - 5/23/2012		

**STATE OF ILLINOIS
DEPARTMENT OF TRANSPORTATION**

**147TH STREET PROJECT
147TH STREET EASTBOUND PROFILE**

F.A.I. R.T.E.	SECTION	COUNTY	TOTAL SHEETS	SHEET NO.
XX	(10405-1 & 0506-2) R-1	COOK	577	82
SCALE: 1"=50'		SHEET NO. 1 OF 3 SHEETS		STA. 1006+00 TO STA. 1027+00
FED. ROAD DIST. NO.		ILLINOIS FED. AID PROJECT		