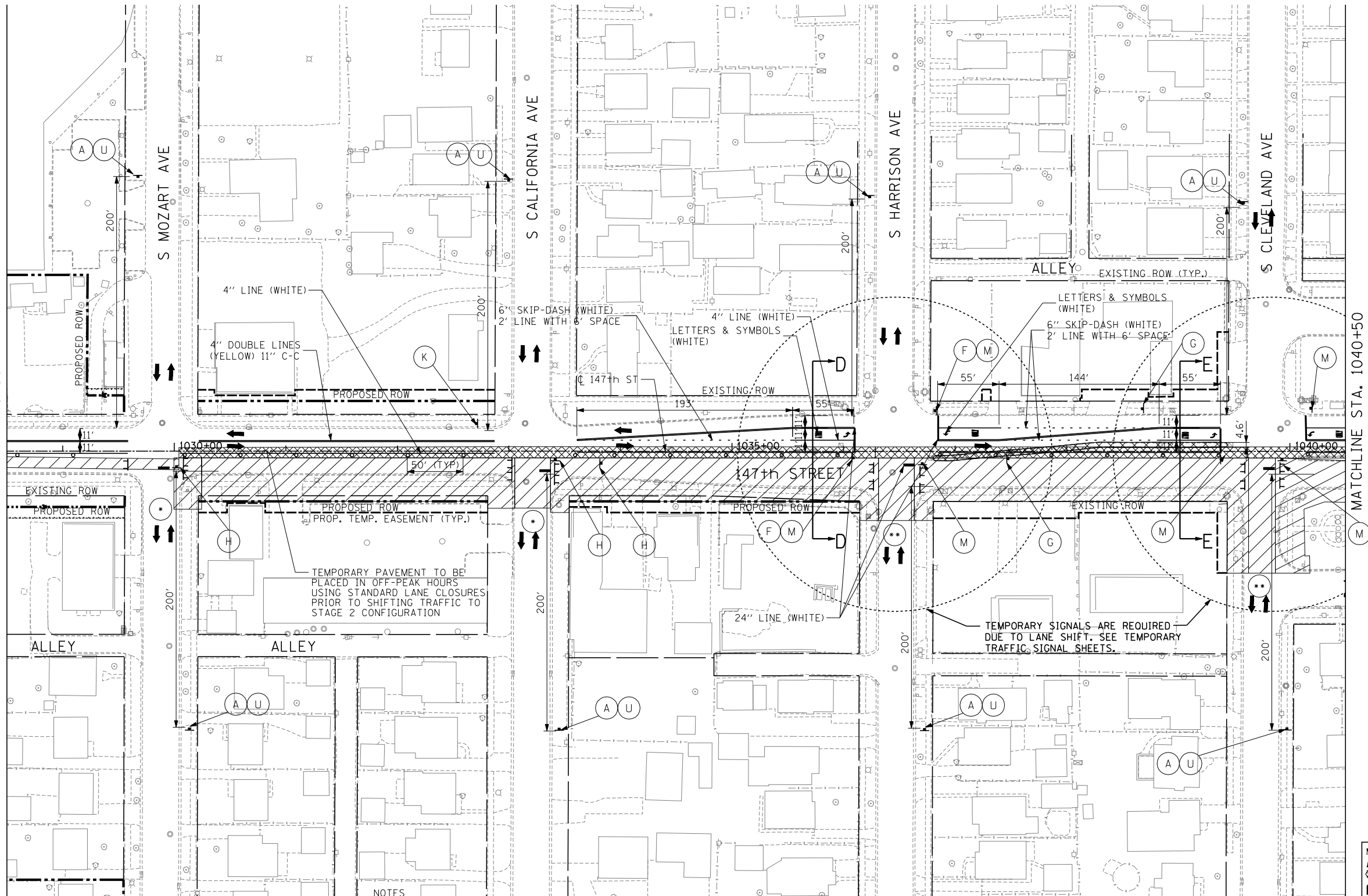
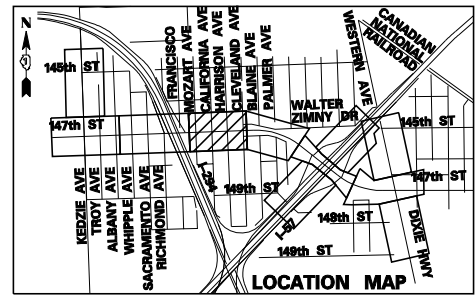


MATCHLINE STA. 1028+50



**LEGEND:**

- TEMPORARY CONCRETE BARRIER
- TRAFFIC LANE
- WORK ZONE
- TEMPORARY PAVEMENT
- BARRICADE, TYPE III
- DRUM WITH MONO-DIRECTIONAL STEADY BURNING LIGHT
- ARROW BOARD



0 50 100  
SCALE: 1" = 50'-0"

- \* CLOSURE TIME LIMITED TO 2 WEEKS  
COORDINATE CLOSURE BETWEEN MOZART AVE.  
AND CALIFORNIA AVE. ONE STREET MUST REMAIN  
OPEN AT ALL TIMES. SEE "LOCAL STREET CLOSURE  
DETAIL" ON THE MAINTENANCE OF  
TRAFFIC SIGNING SHEET.
- \*\* CLOSURE TIME LIMITED TO 2 WEEKS  
COORDINATE CLOSURE BETWEEN HARRISON AVE.  
AND CLEVELAND AVE. ONE STREET MUST REMAIN  
OPEN AT ALL TIMES. SEE "LOCAL STREET CLOSURE  
DETAIL" ON THE MAINTENANCE OF  
TRAFFIC SIGNING SHEET.

TYLIN INTERNATIONAL	USER NAME =	DESIGNED - DM	REVISED -	STATE OF ILLINOIS DEPARTMENT OF TRANSPORTATION	147TH STREET PROJECT			F.A.I. RTE.	SECTION	COUNTY	TOTAL SHEETS	SHEET NO.
	PLOT SCALE =	DRAWN - DM	REVISED -		MAINTENANCE OF TRAFFIC - 147TH ST. STAGE 1			XX	(0405-1 & 0506-2) R-1	COOK	577	104
	PLOT DATE =	CHECKED - JPM	REVISED -		SCALE: 1" = 50' SHEET NO. 4 OF 11 SHEETS STA. 1028+50 TO STA. 1040+50			CONTRACT NO. 60M57				
		DATE - 5/23/2012	REVISED - 8/1/2012					FED. ROAD DIST. NO. ILLINOIS FED. AID PROJECT				