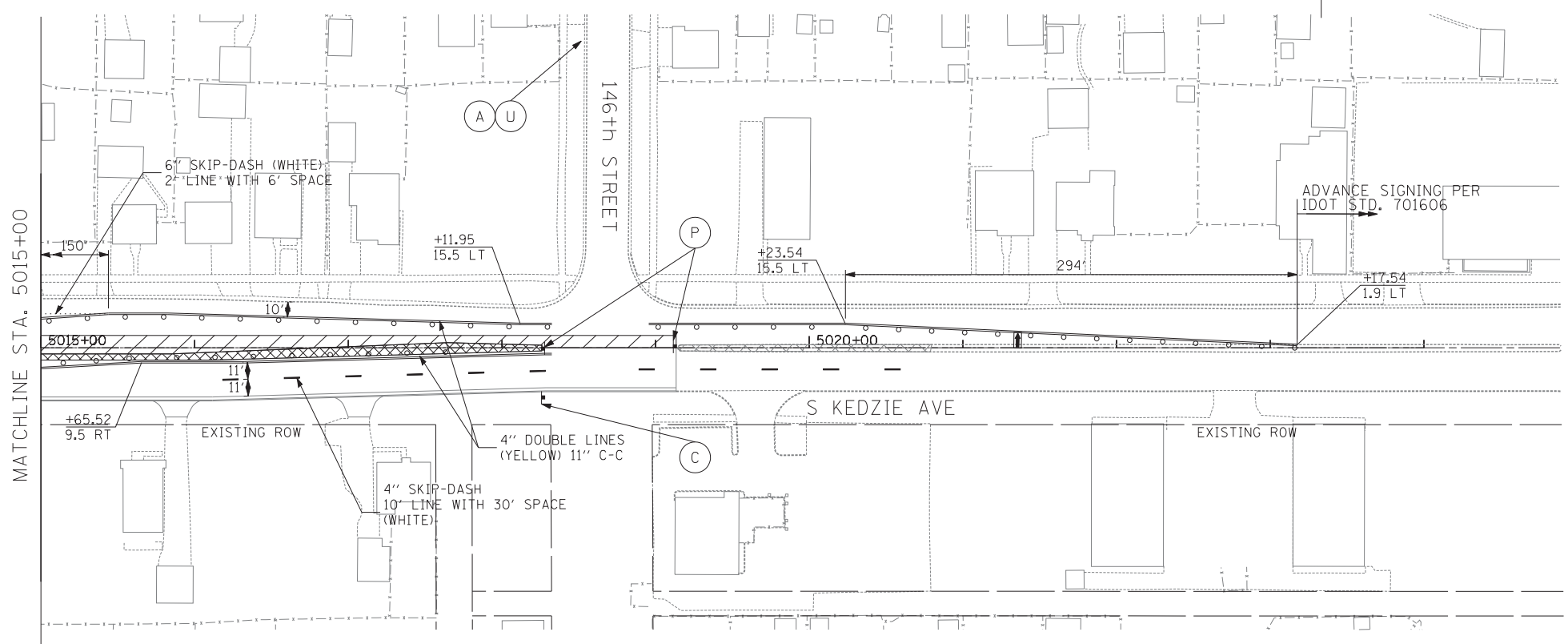
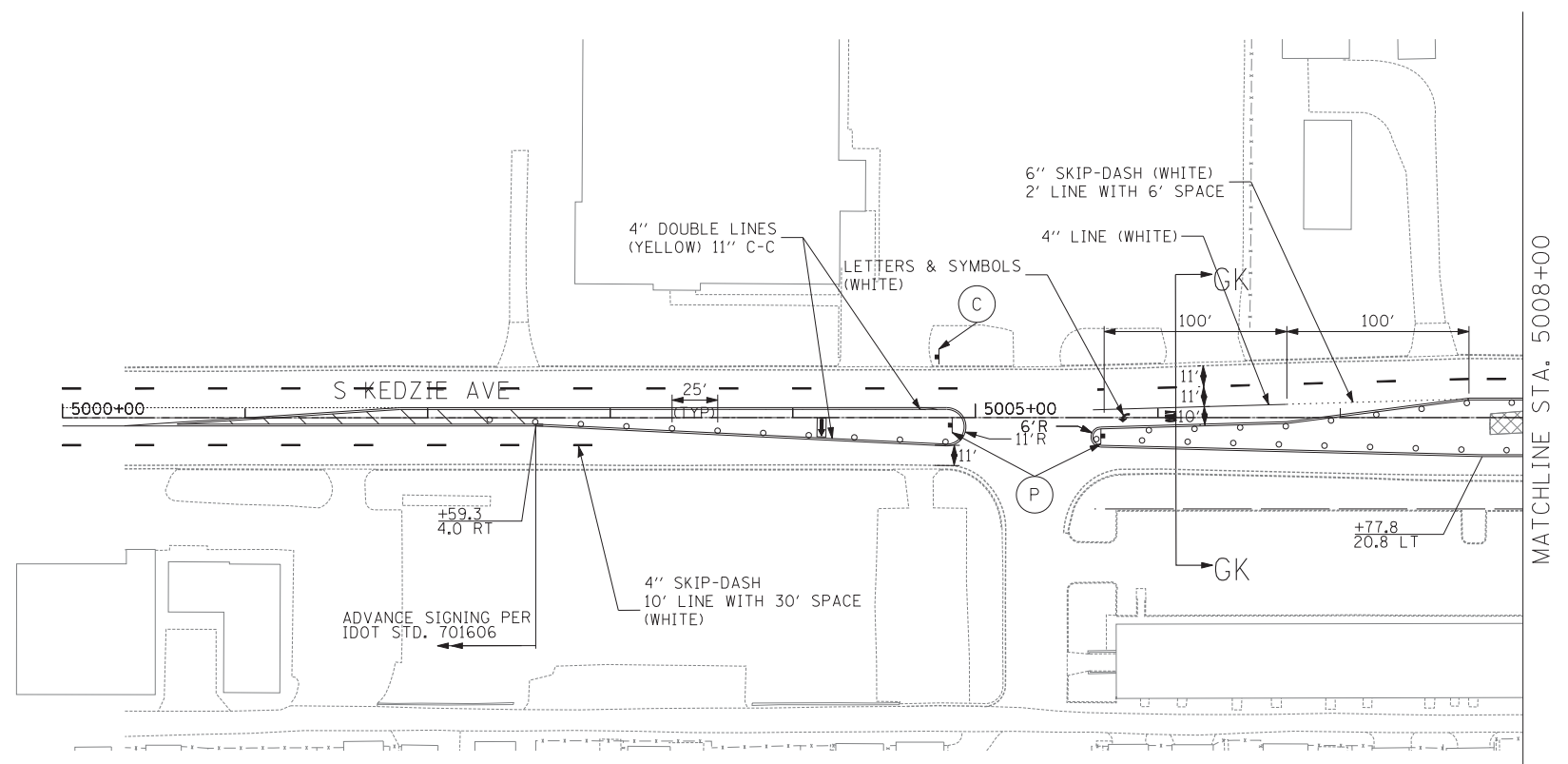
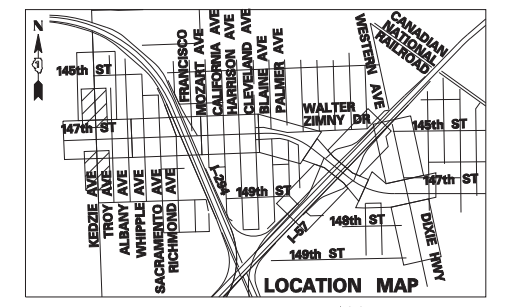


149th STREET



- LEGEND:**
- TEMPORARY CONCRETE BARRIER
 - TRAFFIC LANE
 - WORK ZONE
 - TEMPORARY PAVEMENT
 - BARRICADE, TYPE III
 - DRUM WITH MONO-DIRECTIONAL STEADY BURNING LIGHT
 - ARROW BOARD



0 50 100
SCALE: 1" = 50'-0"

TYLIN INTERNATIONAL

USER NAME =	DESIGNED - DM	REVISED -
	DRAWN - DM	REVISED -
PLOT SCALE =	CHECKED - JPM	REVISED -
PLOT DATE =	DATE - 5/23/2012	REVISED -

**STATE OF ILLINOIS
DEPARTMENT OF TRANSPORTATION**

**147TH STREET PROJECT
MAINTENANCE OF TRAFFIC - KEDZIE AVE. STAGE 2A**

SCALE: 1" = 50' SHEET NO. 2 OF 6 SHEETS STA. 1000+00 TO STA. 1014+00

F.A.I. RTE.	SECTION	COUNTY	TOTAL SHEETS	SHEET NO.
XX	(0405-1 & 0506-2) R-1	COOK	577	136
FED. ROAD DIST. NO.			ILLINOIS FED. AID PROJECT	
			CONTRACT NO. 60M57	