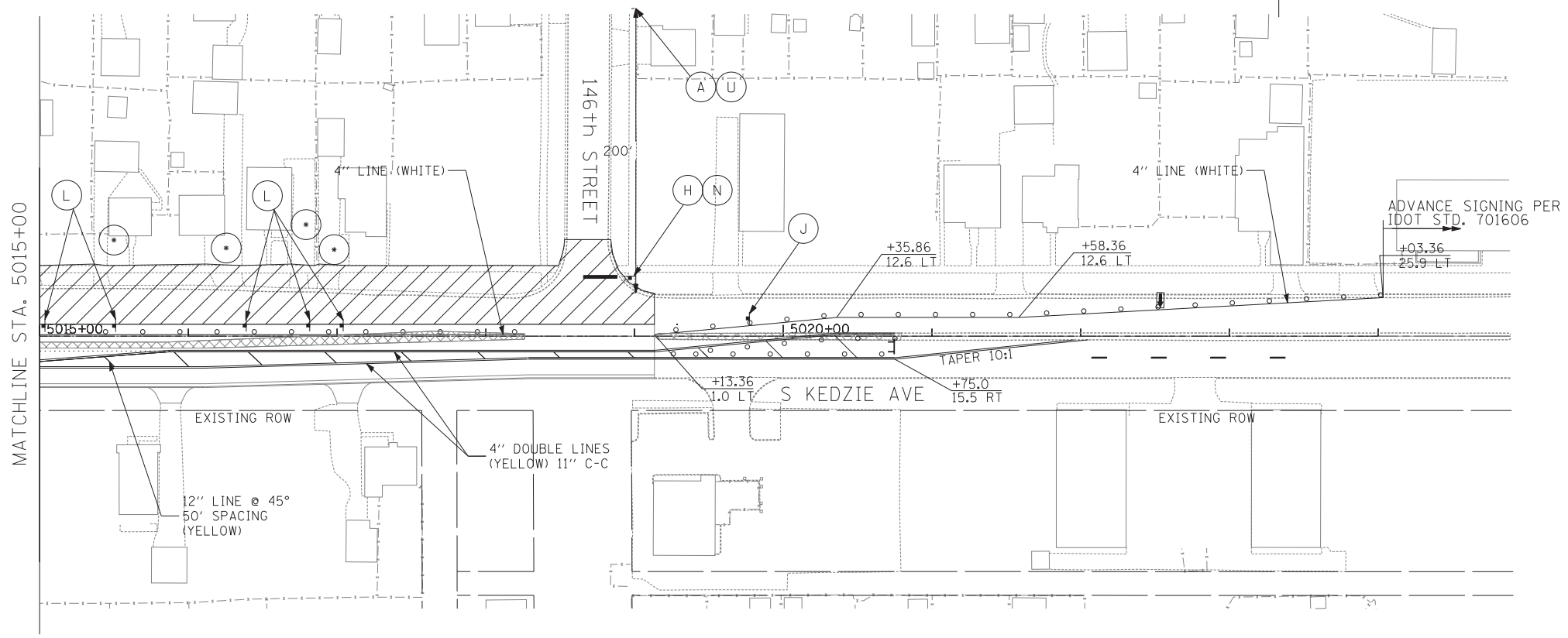
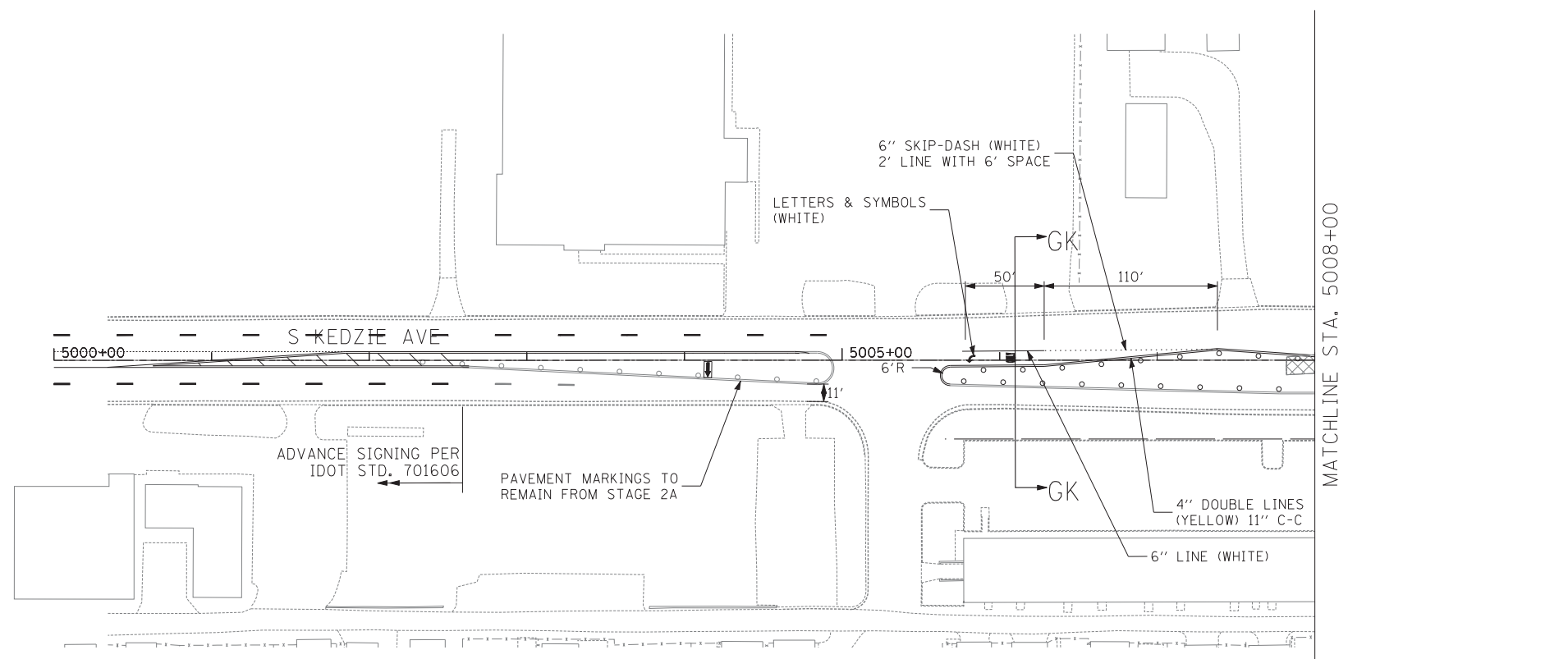


149th STREET



- LEGEND:**
- TEMPORARY CONCRETE BARRIER
 - TRAFFIC LANE
 - WORK ZONE
 - TEMPORARY PAVEMENT
 - BARRICADE, TYPE III
 - DRUM WITH MONO-DIRECTIONAL STEADY BURNING LIGHT
 - ARROW BOARD

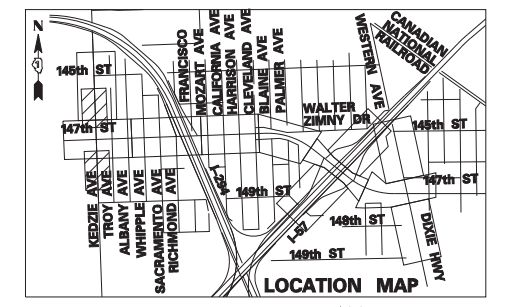
MATCHLINE STA. 5015+00

MATCHLINE STA. 5008+00

146th STREET

S KEDZIE AVE

DRIVEWAY ACCESS, CLOSURE TIME LIMITED TO 2 WEEKS



TYLIN INTERNATIONAL

USER NAME =	DESIGNED - DM	REVISED -
	DRAWN - DM	REVISED -
PLOT SCALE =	CHECKED - JPM	REVISED -
PLOT DATE =	DATE - 5/23/2012	REVISED -

**STATE OF ILLINOIS
DEPARTMENT OF TRANSPORTATION**

**147TH STREET PROJECT
MAINTENANCE OF TRAFFIC - KEDZIE AVE. STAGE 2B**

F.A.I. RTE.	SECTION	COUNTY	TOTAL SHEETS	SHEET NO.
XX	(0405-1 & 0506-2) R-1	COOK	577	142
CONTRACT NO. 60M57				
FED. ROAD DIST. NO.		ILLINOIS FED. AID PROJECT		