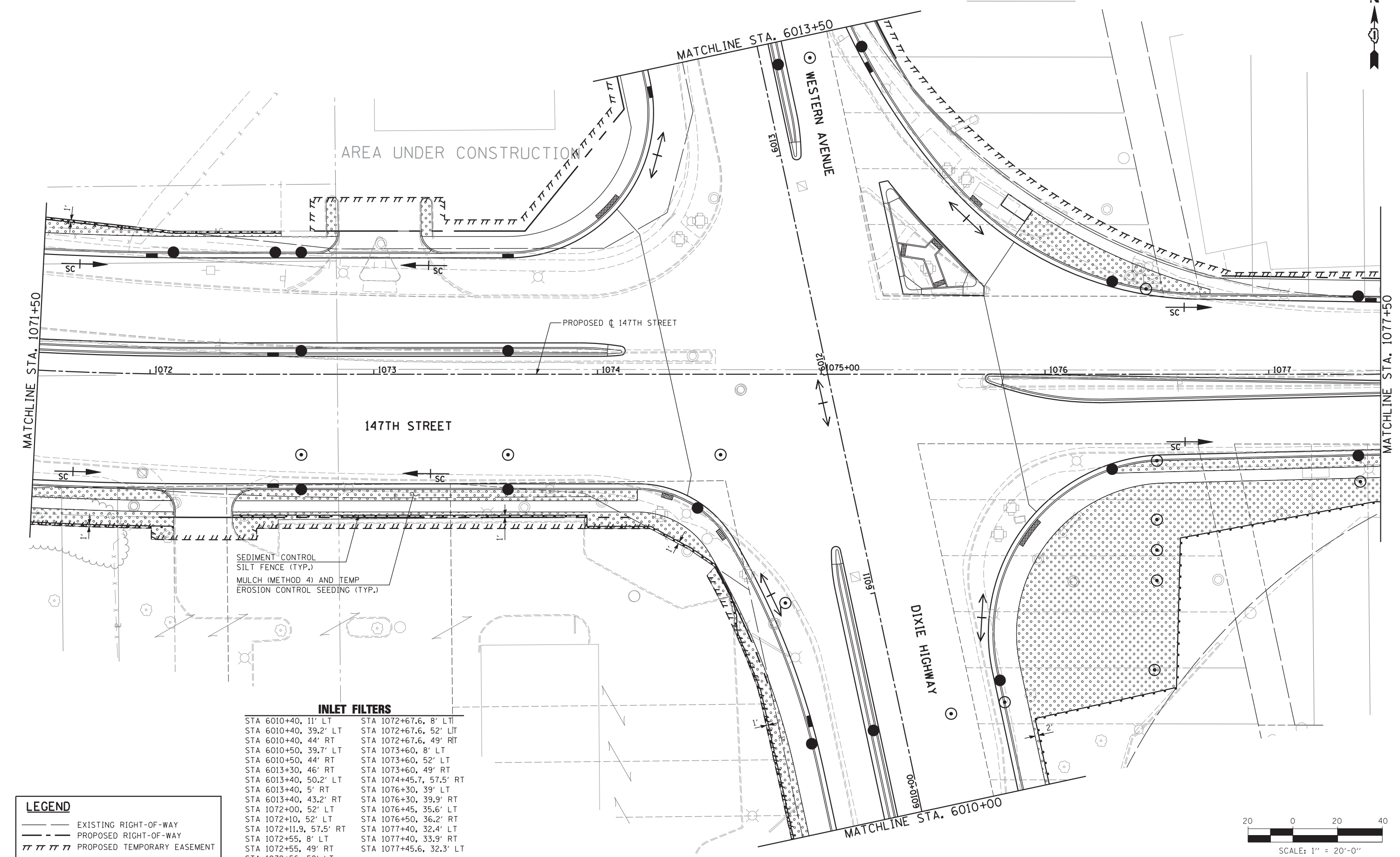




PI0.EROS_SHT10_HRGREEN.dgn

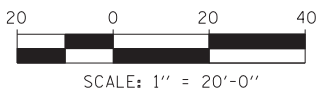


SEDIMENT CONTROL
SILT FENCE (TYP.)
MULCH (METHOD 4) AND TEMP
EROSION CONTROL SEEDING (TYP.)

INLET FILTERS

STA 6010+40, 11' LT	STA 1072+67.6, 8' LT
STA 6010+40, 39.2' LT	STA 1072+67.6, 52' LT
STA 6010+40, 44' RT	STA 1072+67.6, 49' RT
STA 6010+50, 39.7' LT	STA 1073+60, 8' LT
STA 6010+50, 44' RT	STA 1073+60, 52' LT
STA 6013+30, 46' RT	STA 1073+60, 49' RT
STA 6013+40, 50.2' LT	STA 1074+45.7, 57.5' RT
STA 6013+40, 5' RT	STA 1076+30, 39' LT
STA 6013+40, 43.2' RT	STA 1076+30, 39.9' RT
STA 1072+00, 52' LT	STA 1076+45, 35.6' LT
STA 1072+10, 52' LT	STA 1076+50, 36.2' RT
STA 1072+11.9, 57.5' RT	STA 1077+40, 32.4' LT
STA 1072+55, 8' LT	STA 1077+40, 33.9' RT
STA 1072+55, 49' RT	STA 1077+45.6, 32.3' LT
STA 1072+56, 52' LT	

LEGEND	
	EXISTING RIGHT-OF-WAY
	PROPOSED RIGHT-OF-WAY
	PROPOSED TEMPORARY EASEMENT



USER NAME =	DESIGNED - JRS	REVISED - JRS 12/01/2011
	DRAWN - MJF	REVISED - JRS 02/15/2012
PLOT SCALE =	CHECKED - APS	REVISED - JRS 05/04/2012
PLOT DATE	DATE - 7/22/2011	REVISED -

**STATE OF ILLINOIS
DEPARTMENT OF TRANSPORTATION**

**147TH STREET PROJECT
EROSION CONTROL PLAN - 147TH STREET**

SCALE: 1"=20' SHEET NO. 10 OF 22 SHEETS STA. 1071+50 TO STA. 1077+50

F.A.I. RTE.	SECTION	COUNTY	TOTAL SHEETS	SHEET NO.
57	(0405-1 & 0506-2) R-1	COOK	577	182
CONTRACT NO. 60M57				

FED. ROAD DIST. NO. ILLINOIS FED. AID PROJECT