

PART OF SECTION 12, T36N, R13E & SECTION 7, T36N, R14E, OF THE 3RD PM, COOK COUNTY, ILLINOIS

ALIGNMENT AND COORDINATE DATA

PROPOSED DIXIE HIGHWAY CENTERLINE (AS STAKED)

POINT 50003 NORTH 1,804,216.241 EAST 1,164,686.408 STA 5996+00.00
 COURSE FROM 50003 TO 50004 N 12° 18' 26" W DIST 400.000
 POINT 50004 NORTH 1,804,607.048 EAST 1,164,601.147 STA 6000+00.00
 COURSE FROM 50004 TO 60005 N 12° 26' 59" W DIST 500.000
 POINT 60005 NORTH 1,805,095.291 EAST 1,164,493.356 STA 6005+00.00
 COURSE FROM 60005 TO 50005 N 12° 26' 59" W DIST 700.000
 POINT 50005 NORTH 1,805,778.831 EAST 1,164,342.449 STA 6012+00.00
 COURSE FROM 50005 TO 60018 N 12° 26' 59" W DIST 600.000
 POINT 60018 NORTH 1,806,364.723 EAST 1,164,213.100 STA 6018+00.00
 COURSE FROM 60018 TO 50006 N 12° 26' 59" W DIST 600.000
 POINT 50006 NORTH 1,806,950.614 EAST 1,164,083.751 STA 6024+00.00
 COURSE FROM 50006 TO 50007 N 12° 14' 00" W DIST 400.000
 POINT 50007 NORTH 1,807,341.531 EAST 1,163,998.993 STA 6028+00.00

RIGHT OF WAY CORNERS DIXIE HIGHWAY

STATION	OFFSET	POINT	NORTH	EAST
5998+62.57	38.37	30249	1804480.950	1164667.926
6001+21.21	38.10	30251	1804733.619	1164612.219
6001+32.04	52.66	30242	1804747.332	1164624.106
6002+01.13	45.12	30271	1804813.176	1164601.847
6003+12.38	45.15	30265	1804921.815	1164577.895
6004+58.61	45.19	30260	1805064.614	1164546.411
6004+71.07	59.11	30258	1805079.785	1164557.316
6005+40.98	47.82	30276	1805145.613	1164531.217
6005+72.85	-83.41	30508	1805148.444	1164396.205
6005+75.90	-63.39	30510	1805155.740	1164415.093
6005+79.71	-82.01	30509	1805155.444	1164396.095
6005+83.84	-54.03	30507	1805165.509	1164422.518
6006+72.33	47.82	30279	1805273.878	1164502.896
6008+13.09	55.08	30288	1805412.895	1164479.647
6008+48.55	56.91	30299	1805447.912	1164473.791
6008+73.88	58.22	30280	1805472.936	1164469.606
6009+43.96	58.22	30302	1805541.363	1164454.497
6010+64.01	-54.55	30334	1805634.277	1164318.497
6010+97.00	-59.59	30341	1805665.410	1164306.467
6011+26.99	-67.93	30333	1805692.897	1164291.856
6013+17.87	63.83	30472	1805907.685	1164379.368
6013+35.00	-64.15	30386	1805896.827	1164250.703
6013+59.30	52.88	30471	1805945.788	1164359.740
6014+11.69	46.94	30470	1805995.666	1164342.646
6014+22.79	-64.05	30374	1805982.578	1164231.876
6014+78.71	47.02	30469	1806061.123	1164328.275
6014+91.96	63.32	30468	1806077.577	1164341.335
6015+36.00	-63.92	30377	1806093.152	1164207.599
6015+62.99	47.12	30427	1806143.446	1164310.201
6017+10.00	-53.72	30378	1806265.261	1164180.050
6017+23.72	47.30	30442	1806300.436	1164275.733
6017+61.00	-53.66	30381	1806315.073	1164169.114
6017+61.00	47.35	30426	1806336.847	1164267.739
6020+27.42	-46.50	30382	1806576.775	1164118.669
6021+94.72	-42.00	30401	1806741.109	1164086.992
6023+85.47	34.68	30437	1806943.905	1164120.749
6024+60.74	32.93	30425	1807016.953	1164103.062
6024+60.99	-35.07	30384	1807002.793	1164036.551
6024+61.00	-33.07	30420	1807003.222	1164038.504

PROPOSED F.A.I. 57 CENTERLINE (PARTIAL)

POINT 60000 NORTH 1,802,552.675 EAST 1,159,320.698 STA 1235+42.36
 COURSE FROM 60000 TO 60001 N 43° 59' 39" E DIST 7,832.22'
 POINT 60001 NORTH 1,808,187.261 EAST 1,164,760.839 STA 1313+74.58

RIGHT OF WAY CORNERS F.A.I. 57

STATION	OFFSET	POINT	NORTH	EAST
1292+27.29	279.62	30407	1806448.265	1163470.526
1295+03.57	208.43	30409	1806696.462	1163611.213
1295+23.40	204.08	30408	1806713.754	1163621.856
1296+66.12	172.75	30411	1806838.190	1163698.445

PROPOSED F.A.U. 1602 (IL 83), SIBLEY BOULEVARD (147th. STREET) CENTERLINE

POINT 14707 NORTH 1,806,888.100 EAST 1,157,202.318 STA 1000+00.00
 COURSE FROM 14707 TO 24014 N 88° 11' 54" E DIST 661.095
 POINT 24014 NORTH 1,806,908.886 EAST 1,157,863.086 STA 1006+61.10
 COURSE FROM 24014 TO PC PR-147C-1R N 87° 48' 02" E DIST 3,427.890

* CURVE DATA *

CURVE PR-147C-1R
 P.I. STATION = 1047+60.07 NORTH 1,807,066.189 EAST 1,161,959.037
 DELTA = 41° 25' 14" (RT)
 DEGREE = 3° 13' 41"
 TANGENT = 671.080
 LENGTH = 1,283.192
 RADIUS = 1,775.000
 EXTERNAL = 122.623
 LONG CHORD = 1,255.431
 MID. ORD. = 114.699
 P.C. STATION = 1040+88.99 NORTH 1,807,040.436 EAST 1,161,288.451
 P.T. STATION = 1053+72.18 NORTH 1,806,641.854 EAST 1,162,478.930
 C.C. = NORTH 1,805,266.743 EAST 1,161,356.569
 BACK = N 87° 48' 02" E
 AHEAD = S 50° 46' 44" E
 CHORD BEAR = S 71° 29' 21" E

COURSE FROM PT PR-147C-1R TO PC PR-147C-2 S 50° 46' 44" EAST DIST 850.592

* CURVE DATA *

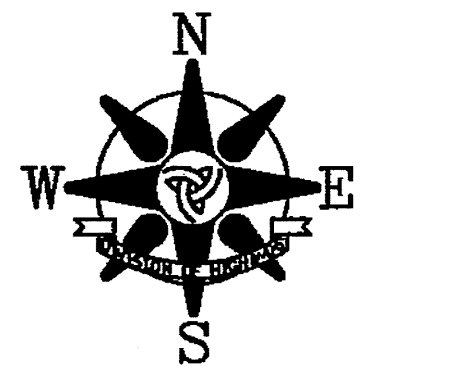
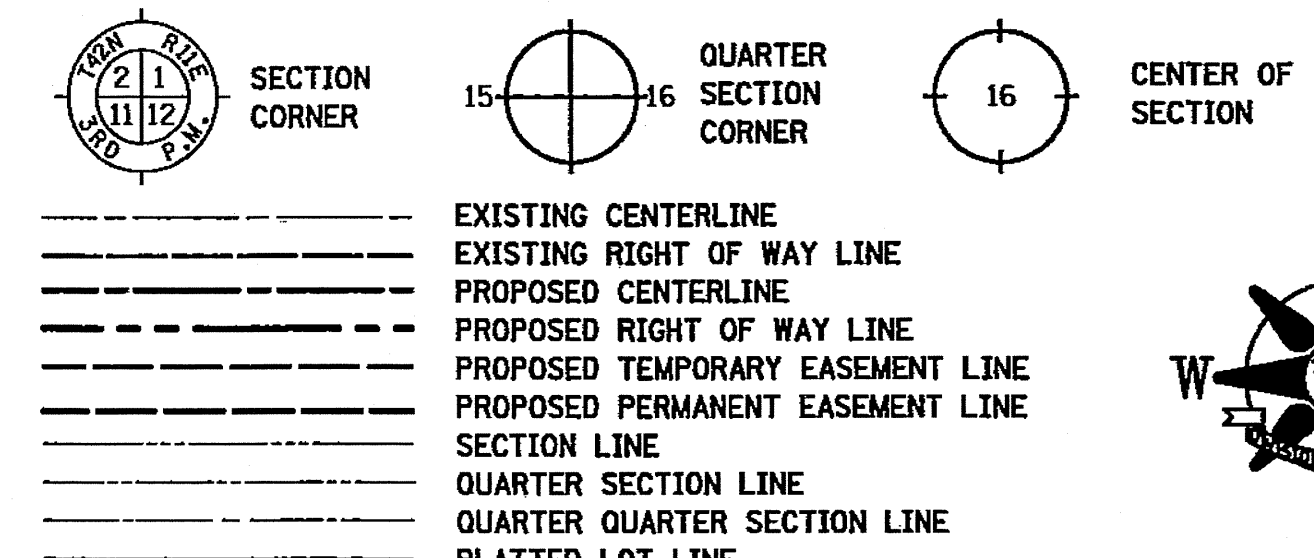
CURVE PR-147C-2 (CHORD DEFINITION)
 P.I. STATION = 1067+43.69 NORTH 1,805,774.624 EAST 1,163,541.456
 DELTA = 39° 31' 20" (LT)
 DEGREE = 3° 57' 08"
 TANGENT = 520.921
 LENGTH = 1,000.002
 RADIUS = 1,450.000
 EXTERNAL = 90.733
 LONG CHORD = 980.488
 MID. ORD. = 85.390
 P.C. STATION = 1062+22.77 NORTH 1,806,104.011 EAST 1,163,137.893
 P.T. STATION = 1072+22.77 NORTH 1,805,777.361 EAST 1,164,062.369
 C.C. = NORTH 1,807,227.341 EAST 1,164,054.752
 BACK = S 50° 46' 44" E
 AHEAD = N 89° 41' 56" E
 CHORD BEAR = S 70° 32' 24" E

COURSE FROM PT PR-147C-2 TO 14703 N 89° 41' 56" E DIST 1,062.551
 POINT 14703 NORTH 1,805,782.943 EAST 1,165,124.906 STA 1082+85.32

RIGHT OF WAY CORNERS F.A.U. 1602 (IL 83), SIBLEY BOULEVARD (147th. STREET) 147th. STREET

STATION	OFFSET	POINT	NORTH	EAST
1070+40.92	64.88	30352	1805723.392	1163873.120
1071+15.35	65.86	30347	1805715.073	1163950.473
1071+39.32	65.74	30346	1805713.677	1163975.496
1071+87.17	64.85	30322	1805712.769	1164025.516
1072+04.79	64.48	30324	1805712.896	1164043.919
1072+10.71	-63.83	30373	1805841.178	1164050.505
1072+70.00	-64.01	30370	1805841.620	1164109.261
1072+73.30	-64.02	30369	1805841.645	1164112.561
1072+82.46	-64.04	30368	1805841.714	1164121.725
1073+67.00	-64.23	30385	1805842.351	1164206.259
1074+14.30	64.03	30325	1805714.339	1164254.230
1076+72.88	-44.35	30473	1805824.076	1164512.236
1077+81.60	47.76	30311	1805732.542	1164621.437
1078+43.14	-41.41	30493	1805822.031	1164682.515
1078+68.22	-40.98	30492	1805821.729	1164707.593
1078+93.30	-40.55	30497	1805821.428	1164732.671
1079+18.37	-40.11	30462	1805821.127	1164757.750
1079+19.57	47.89	30309	1805733.133	1164759.408

LEGEND



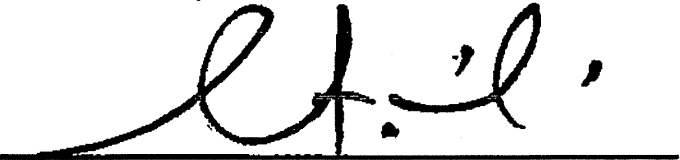
BEARINGS AND COORDINATES SHOWN HEREON ARE BASED ON THE ILLINOIS STATE PLANE COORDINATE SYSTEM, EAST ZONE, NAD83-CORS

- T1 THESE STAKES REFERENCE FOUND OR SET MONUMENTATION. SET 5/8 INCH IRON ROD FLUSH WITH GROUND. IDENTIFIED BY COLORED PLASTIC CAP BEARING SURVEYORS REGISTRATION NUMBER.
- T2
- T3
- BT1 THESE STAKES, IN CULTIVATED AREAS, REFERENCE FOUND OR SET MONUMENTATION. BURIED 5/8 INCH IRON ROD 20 INCHES BELOW GROUND SURFACE. IDENTIFIED BY COLORED PLASTIC CAP BEARING SURVEYORS REGISTRATION NUMBER.
- BT2
- BT3
- STAKING OF PROPOSED RIGHT OF WAY. SET DIVISION OF HIGHWAYS SURVEY MARKER TO MONUMENT THE POSITION SHOWN. IDENTIFIED BY INSCRIPTION DATA AND SURVEYORS REGISTRATION NUMBER.
- M STAKING OF PROPOSED RIGHT OF WAY IN CULTIVATED AREAS. BURIED 5/8 INCH IRON ROD 20 INCHES BELOW GROUND SURFACE TO MARK FUTURE SURVEY MARKER POSITION. IDENTIFIED BY COLORED PLASTIC CAP AND SURVEYORS REGISTRATION NUMBER.
- U STAKING OF PROPOSED RIGHT OF WAY IN CLOSE PROXIMITY TO UNDERGROUND UTILITIES. SET DIVISION OF HIGHWAYS SURVEY MARKER ON 5/8 INCH IRON ROD (BETWEEN 6 INCHES AND 12 INCHES IN LENGTH) TO MONUMENT THE POSITION SHOWN. IDENTIFIED BY INSCRIPTION DATA AND SURVEYORS REGISTRATION NUMBER.

STATE OF ILLINOIS)
) S.S.
 COUNTY OF COOK)

THIS IS TO CERTIFY THAT I, COVENTINE FIDIS, AN ILLINOIS PROFESSIONAL LAND SURVEYOR, HAS SURVEYED THE PLAT OF HIGHWAYS SHOWN HEREON IN SECTION 12, TOWNSHIP 36 NORTH, RANGE 13 EAST AND SECTION 7, TOWNSHIP 36 NORTH, RANGE 14 EAST OF THE THIRD PRINCIPAL MERIDIAN, IN COOK COUNTY, THAT THE PLAT CORRECTLY REPRESENTS SAID SURVEY, THAT ALL MONUMENTS FOUND AND ESTABLISHED ARE OF PERMANENT QUALITY AND OCCUPY THE POSITIONS SHOWN THEREON AND THAT THE MONUMENTS ARE SUFFICIENT TO ENABLE THE SURVEY TO BE RETRACED. MADE FOR THE DEPARTMENT OF TRANSPORTATION, STATE OF ILLINOIS.

DATED AT CHICAGO, ILLINOIS THIS 6TH DAY OF FEBRUARY, 2012.


 COVENTINE FIDIS
 ILLINOIS PROFESSIONAL LAND SURVEYOR NO. 2159
 LICENSE EXPIRATION DATE 11/30/2012



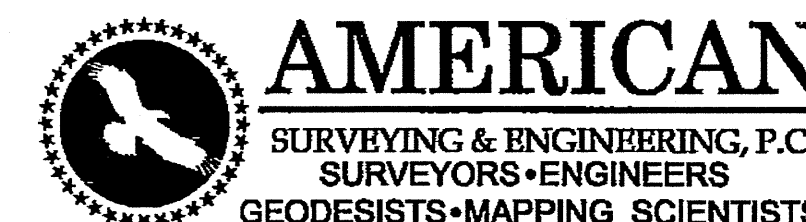
THIS PROFESSIONAL SERVICE CONFORMS TO THE CURRENT ILLINOIS MINIMUM SURVEY STANDARDS.

RECEIVED
 MAR 09 2012
 PLATS & LEGALS

**PLAT OF HIGHWAYS
 STATE OF ILLINOIS
 DEPARTMENT OF TRANSPORTATION
 F.A.U. 1602 (IL 83)
 KEDZIE AVENUE TO WESTERN AVENUE**

SECTION: I-294 AT I-57 COUNTY: COOK
 PROJECT: JOB NO. R-90-004-09
 ALIGNMENT AND COORDINATE DATA
 SCALE: 1" = 50' SHEET A13 OF A16

BUREAU OF LAND ACQUISITION
 201 WEST CENTER COURT
 SCHAMBURG, ILLINOIS 60196



105 W. Madison St. Suite 1700
 Chicago, IL 60602
 312-277-2000 / Fax 312-277-2002