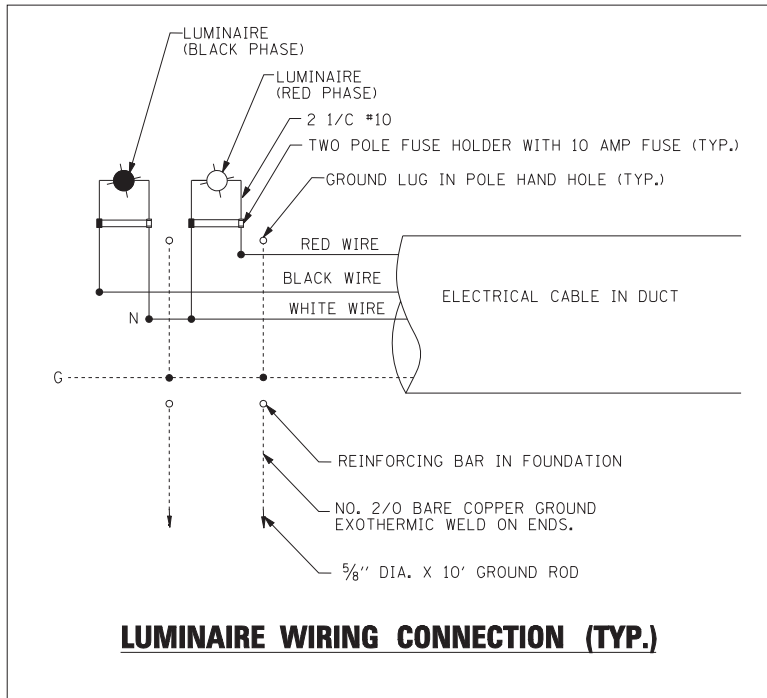
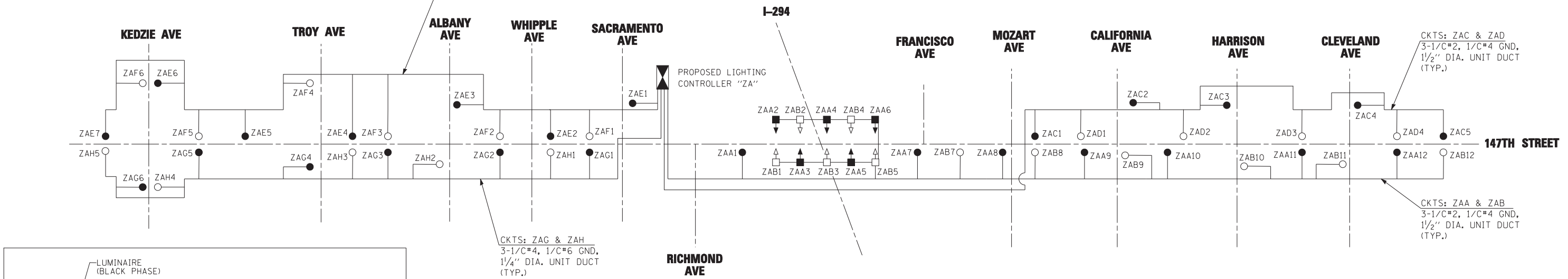




...D160M57-sht-light9.dgn

LOAD TABLE PROPOSED LIGHTING CONTROLLER "ZA" (@ 240 VOLT)					
CIRCUIT	BLACK PHASE		CIRCUIT	RED PHASE	
	AMPS	WATTS		AMPS	WATTS
A	17.8	4,260	B	17.8	4,260
C	10.0	2,400	D	8.0	1,920
E	14.0	3,360	F	12.0	2,880
G	12.0	2,880	H	10.0	2,400
I	0.0	SPARE	J	0.0	SPARE
K	0.0	SPARE	L	0.0	SPARE
M	0.0	SPARE	N	0.0	SPARE
O	0.0	SPARE	P	0.0	SPARE
Q	0.0	SPARE	R	0.0	SPARE
S	0.0	SPARE	T	0.0	SPARE
U	0.0	SPARE	V	0.0	SPARE
W	0.0	SPARE	X	0.0	SPARE
TOTAL	53.8	12,900	TOTAL	47.8	11,460



LEGEND	
	100W HPS UNDERPASS LUMINAIRE, 240V (RED PHASE)
	100W HPS UNDERPASS LUMINAIRE, 240V (BLACK PHASE)
	400W HPS LUMINAIRE, POLE MOUNTED, 240V (RED PHASE)
	400W HPS LUMINAIRE, POLE MOUNTED, 240V (BLACK PHASE)
	LIGHTING CONTROLLER, 240/480V
	HIGH MAST TOWER, 100FT M.H. WITH (5) 400W HPS TYPE MC-III LUMINAIRES, 240V (OPEN - RED PHASE, SOLID - BLACK PHASE)
	SIGN LUMINAIRE



USER NAME = rswanson	DESIGNED - RDP	REVISED -
PLOT SCALE = 50:1	DRAWN - PS	REVISED -
PLOT DATE = 4/23/2012	CHECKED - RAS	REVISED -
	DATE - 04/20/2012	REVISED -

STATE OF ILLINOIS
DEPARTMENT OF TRANSPORTATION

147TH STREET SINGLE LINE DIAGRAM - CONTROLLER "ZA"	
SCALE: NONE	SHEET NO. 1 OF 1 SHEETS
STA.	TO STA.

F.A.I. RTE.	SECTION	COUNTY	TOTAL SHEETS	SHEET NO.
	(0405-1 & 0506-2) R-1	COOK	577	425
FED. ROAD DIST. NO.			ILLINOIS FED. AID PROJECT	CONTRACT NO. 60M57

...D160M57-sht-light9.dgn

4/23/2012 10:43:31 PM